



175 OLD HAW CREEK ROAD

Craftsman Home by Award-Winning Meinch Construction



MOSAIC
COMMUNITY LIFESTYLE REALTY

4 Bedrooms, 3 Bathrooms
2,018 SF • 0.29 Acre
MLS #4026338



INFO

175 Old Haw Creek Road
Asheville, NC 28805
4 Bedrooms, 3 Bathrooms
2,018 Square Feet • 0.29 Acre
MLS #4026338

FEATURES

- Covered front porch
- Four bedrooms; three full bathrooms
- Large picture windows in living room provide lots of natural light
- Quartz countertops, stainless steel appliances, a pantry, and custom-built, soft-close cabinets feature in the kitchen
- Office/flex space with closet and French doors
- Primary bedroom suite with an ensuite bathroom that features a walk-in shower
- Modern fixtures throughout
- Mudroom area has a full bathroom
- Quality vinyl plank flooring



Hang Out on the 30' x 10' Deck • Perfect for Barbecues

- Beautiful creek view from the 10' x 30' back deck, made with durable Trex decking
- Freshly sodded
- Fiber cement siding
- Energy Star home
- Zoned heat pump
- High-efficiency, hybrid hot water heater
- City water and sewer



Plenty of Natural Light from Entry



Open-Plan Kitchen



Custom Cabinetry



Quartz Countertops and Stainless Steel Vent Hood



Classic Hex Tile Backsplash • Glass Cooktop



Custom Shelving in Pantry



Flex Space off Kitchen • Potential Fourth Bedroom/Office



French Doors and Large Windows

175 OLD HAW CREEK RD

Craftsman Home by Meinch Construction

Asheville, NC 28805



Cheery Primary Bedroom with Ensuite Bathroom



Bright Dual-Pane Slider Window



Ensuite Bath with Dual-Head Shower, Walk-in Closet



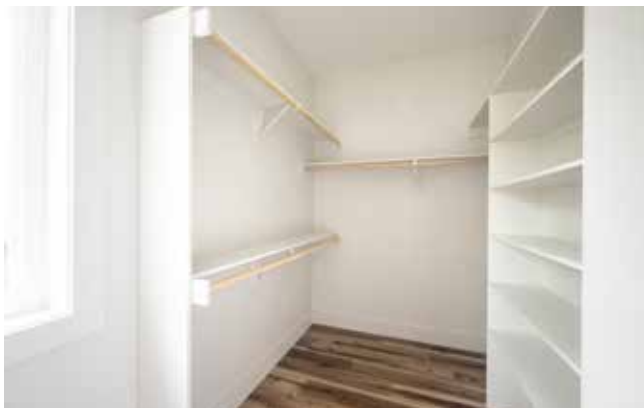
Shower Has Built-in Toiletry Nooks



Roomy Double Vanity



Modern Lighting and Plumbing Fixtures



Spacious Walk-in Closet with Custom Shelving



View of Bathroom, Bedroom from Walk-in Closet

175 OLD HAW CREEK RD

Craftsman Home by Meinch Construction

Asheville, NC 28805



Main-Level Laundry



Second Full Bath on Main Level



Full-Daylight, Walk-out Basement



High Ceilings Continue on the Lower Level



Airy Space with Bedroom and Bath • Perfect for Guests



Basement Bedroom with Large Slider Window



Clerestory Window



Closet with Solid Shelving



Full Bath Downstairs



Basement Utility Room and Storage Area



Lower-Level Patio



Patio Offers a Respite from the Summer Sun



Trex Decking Provides Durability



Huge, Sunny Spot for Relaxing



Low-Maintenance Siding



Back Yard with Views of the Creek



View of Back Yard from Creekside

175 OLD HAW CREEK RD

Craftsman Home by Meinch Construction

Asheville, NC 28805



MOSAIC
COMMUNITY LIFESTYLE REALTY

60 Biltmore Avenue, Asheville, NC 28801 tel : 828.707.9556 fax: 800.553.1491

WWW.MYMOSAICREALTY.COM



Haw Creek Runs through the Back Yard



New Hobby: Looking for Salamanders!



Or Simply Enjoy the Sounds of the Gently Gurgling Creek



Driveway Provides Plenty of Parking Area



Fresh Sod • Great Solar Potential

Award-winning builder Meinch Construction is offering another quality Energy Star home just 5 minutes to downtown, yet nestled off the road and tucked away on a private lot. The layout offers a main level with a living/dining area, open-plan kitchen, flex room, full bath, and laundry nook. Primary bedroom on main level is connected by an exquisite walk-in shower with two shower heads and a double vanity. The large walk-in closet has ample custom shelving. Kitchen opens to a 30-foot, high-quality, low-maintenance balcony with a view of Haw Creek. The interior has stainless steel appliances, modern backsplash, and custom-built, soft-close cabinetry, handmade by a local artisan. The floors are finished with a durable and high-performance waterproof vinyl. It has 9-foot ceilings and large windows throughout, plus covered outdoor access from the basement family/recreation room. The bedrooms have plenty of natural light and share a full bath, with storage space tucked into auxiliary areas.



For more information, please contact:

GUS MUJICA

828.275.5709

GUS@MYMOSAICREALTY.COM

DIRECTIONS

From I-240 E in Asheville, take the Tunnel Road exit. Turn left on to Crockett Drive, then take an immediate left onto New Haw Creek Road for 0.2 mile. Turn right onto Middlebrook, then merge onto Old Haw Creek. Follow for 0.3 mile; house is on the right.