



86 MITCHELL AVENUE

Classic Bungalow in the Heart of West Asheville



MOSAIC
COMMUNITY LIFESTYLE REALTY

3 Bedrooms, 2 Bathrooms
1,539 Square Feet • 0.23 Acre
MLS #4020739

INFO

86 Mitchell Avenue, Asheville, NC 28806

3 Bedrooms, 2 Bathrooms

1,539 Square Feet • 0.23 Acre

MLS #4020739

FEATURES

- Classic bungalow in the heart of West Asheville
- Close to Haywood Road's eclectic business district featuring award-winning shopping, dining, and entertainment
- Wonderful, walkable neighborhood full of friendly folks
- Japanese-influenced swinging gate/fence opens to 'secret Zen' garden with mature trees and shrubs, highlighting extensive and thoughtful landscaping
- Lot of outdoor living — spacious covered front porch for relaxing, sunny back deck for gatherings, and intimate lower-level patio
- Many renovations include remodeled kitchen (2021), replaced heating and cooling systems (2018), separate media/movie theater insulated and wired for audio (2011), main-level bedroom + basement addition (2011), built-in speaker system (2010), double-paned windows (2010), attic and basement insulation (2010), basement renovation to create more living space and extra storage (2008), back deck expansion (2008), and motorized blinds in two main-level rooms
- Arched interior doorways retain old-world charm
- Spacious covered front porch overlooks peaceful front yard
- Cozy living room feature a stone-surround fireplace with custom cedar mantel



Covered Front Porch Overlooks Garden

- Renovated kitchen features granite countertops, stainless steel appliances, ample cabinet and counter space, a breakfast bar, casual dining nook, and back deck access
- Formal dining room with space for large table
- Three bedrooms and two full bathrooms on the main level include the primary bedroom with an ensuite full bathroom
- Bright bedroom addition with French-door entry
- Finished basement space (<7' height; not included in square footage) with exterior entrance and tons of great storage
- Private movie/media 'den' with soundproofing installed, perfect for music room
- Fully-fenced backyard for furry friends
- Detached garage for tool and toy storage



Great Space for Entertaining



Cozy Living Room with Stone Fireplace (Non-Functional)



Arched Doorway Connects Living Room + Dining Room



Formal Dining Room with Space for Large Table



Display Shelves and Cabinets for Storage

86 MITCHELL AVENUE
Classic West Asheville Bungalow
Asheville, NC 28806



Renovated Kitchen Features Gorgeous Granite



Lots of Cabinet Space and Stainless Steel Appliances



Extended Counter with Breakfast Bar



Excellent Flow through the Home



Dining Nook off of Kitchen



Second Full Bathroom on Main Level



Primary Suite Gets Great Natural Light



Ample Closet Space in the Primary Bedroom



Bathroom Connects to Primary Bedroom



Second Bedroom with Ceiling Fan



Bright Third Bedroom Addition



Large Windows for Abundant Natural Light



French Doors Connect Third Bedroom to Breakfast Nook



Back Deck Access



Finished Basement has Laundry and Utility Sink



So Many Possibilities in the Finished Basement



Plenty of Closets for Storage



Lower-Level Patio

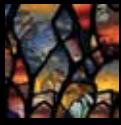


Access Door (Right) to Soundproofed Cinema Room



Host Movie Night in the Soundproofed Cinema Room

86 MITCHELL AVENUE
Classic West Asheville Bungalow
Asheville, NC 28806



Sunny Back Deck, Perfect for Grilling and Gathering



Peaceful Place to Relax



Surrounded by Mature Trees



Custom Swinging Gate Welcomes You Home



Fenced Yard, Ideal for Furry Friends



Lots of Outdoor Living and a Detached Garage



Meandering Stone Pathways



Thoughtful Landscape Design

86 MITCHELL AVENUE
Classic West Asheville Bungalow
Asheville, NC 28806



Mature Trees and Shrubs Highlight Secret Garden

Renovated and expanded bungalow in the heart of walkable West Asheville! Perfect location — just a stone’s throw from some of the area’s most popular shopping and dining. Japanese-influenced swinging gate opens to a ‘secret’ garden with mature landscaping. Outdoor living opportunities abound with a spacious covered front porch, sunny back deck, lower-level patio, and a fully fenced back yard. 3 beds and 2 baths on the main level include the primary bedroom. Dining area offers a relaxing space to gather with family and friends. Finished basement space not included in the square footage (ceiling <7’) has an exterior entrance and also provides access to the professionally soundproofed movie/media room. Detached garage is perfect for auto, tool and toy storage. Renovations include a remodeled kitchen, main-level bedroom + basement addition, replaced heating and cooling systems, replaced windows, and much more. Too many updates to list!



For more information, please contact:

MIKE FIGURA

828.337.8190

MIKE@MYMOSAICREALTY.COM

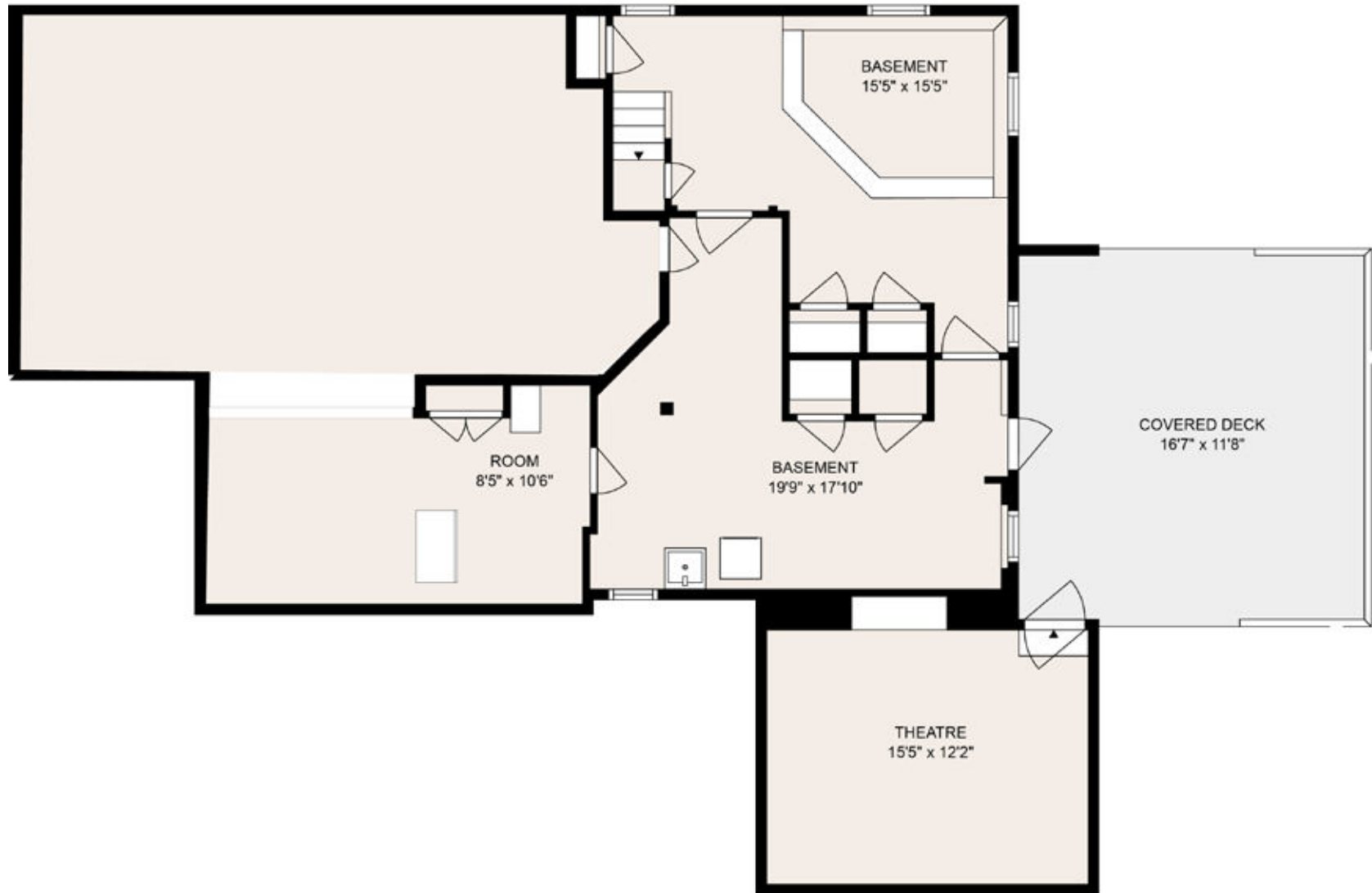
DIRECTIONS

From downtown Asheville, take I-240 W to the Haywood Road exit. Turn right onto Haywood Road. Turn right onto Mitchell Avenue. 86 Mitchell Avenue is on the left. Sign in the yard.



86 MITCHELL AVENUE

Main Level



86 MITCHELL AVENUE

Basement Level