



 VIRTUAL TOUR

## 32 MARLOWE DRIVE

Remodeled Ranch Home in Lovely Five Points



**MOSAIC**  
COMMUNITY LIFESTYLE REALTY

4 Bedrooms, 3 Bathrooms  
1,898 Square Feet • 0.14 Acre  
MLS #3909713

## INFO

32 Marlowe Drive, Asheville, NC 28801

4 Bedrooms, 3 Bathrooms

1,898 Square Feet

0.14 Acre • MLS #3909713

## FEATURES

- Tastefully renovated ranch home in the lovely Five Points neighborhood
- Located on a quiet street, perfect for morning jogs and evening strolls
- Just steps from the tranquil UNC Asheville nature trails, accessed from the rear of the home, a block to the north, on Forsythe Street
- Walking distance to downtown Asheville, close to the Greenway and UNCA/Botanical Gardens and convenient to many Merrimon Avenue amenities, including Whole Foods and Trader Joe's
- Western North Carolina main-level living with mountain views from the sunny back deck
- Lavish outdoor living includes the backyard garden oasis with flowering trees, stone-surround fire pit, a new beautiful bamboo fence, and extensive laid-stone and big-boulder accents
- Among the many renovations are: a new architectural-shingle roof (2022); new interior/exterior paint (2022); refinished floors (2017); all-new plumbing/electrical, including new light fixtures and ceiling fans (2017); basement finished with a full bathroom addition, bedroom suite, and extensive, conditioned storage (2017); new on-demand water heater/whole-house vacuum/washer and dryer (2017); new kitchen appliances (2015)
- Inviting entry opens to bright living room with large picture window and coat closet
- Updated kitchen features mountain views, granite countertops, stainless steel appliances, tile backsplash, a breakfast nook, and back deck access



Sunny Back Deck for Al Fresco Dining

- Sunny back deck is perfect for al fresco dining and relaxing with friends and family
- Hallway connects three bedrooms, a full bathroom, and a linen closet
- Primary bedroom features gorgeous hardwood floors, backyard oasis view, and an ensuite full bathroom that includes a tiled walk-in shower with sitting bench
- Main-level guest bedroom would make a great home office
- Second full bathroom on main level
- Newly finished basement includes a large bedroom suite with office nook, full bathroom addition with tiled walk-in shower, and lots of extra conditioned storage
- Laundry nook with utility sink in basement
- Electrical service has been run to the backyard for a hot tub
- One-car garage with exterior access to the back yard works for parking, workshop, and storage



Sun-Filled Living Room with Large Picture Window



Lots of Space to Entertain



Great Flow through the Home



Breakfast Bar Extension



Updated Kitchen with Granite, Stainless Steel, and Tile



Ample Cabinet and Counter Space



Extra Counter Space and Open Display Shelves



Dining Area off of Kitchen

**32 MARLOWE DRIVE**

Remodeled Ranch Home in Five Points

Asheville, NC 28801



Primary Suite with Gleaming Hardwood Floors



Ensuite Bathroom with Tiled Walk-in Shower and Bench



Bright Guest Bedroom on Main Level



Knotty Pine-Paneled Bedroom, Perfect for Home Office



Second Full Bathroom on Main Level



Tile-Surround Shower + Tub



Downstairs is the Laundry Nook and a Third Full Bath



Full Bathroom Addition in Basement



Large Bedroom Suite in Newly Finished Basement



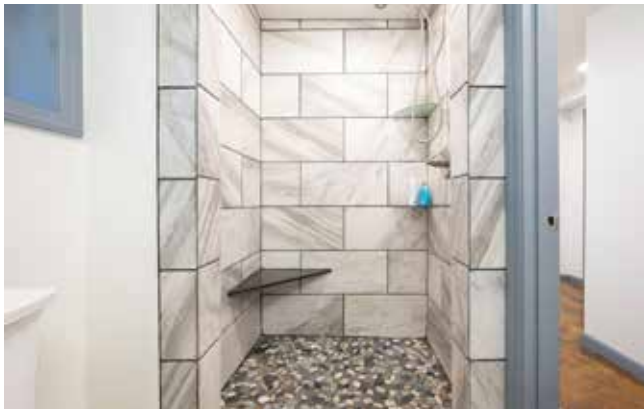
Office Nook off of Basement Bedroom Suite



Walk-in Closet off of Bedroom Suite



Fourth Bedroom or Entertainment Room



Tiled Walk-in Shower with River Stone Floor Accent



Lots of Extra Conditioned Storage



Efficient Design



Central Vacuum for Easy Cleaning



One-Car Garage for Tool and Toy Storage



Workshop Space or Hobby Room



Even More Space for Storage Near the Back Door



Exterior Basement Access Leads to a Great Yard



Fully Fenced Backyard Oasis



Stone-Surround Fire Pit for Chilly Evenings



Back Deck Is Great for Grilling



Thoughtful Landscape Design



New, Beautiful Bamboo Fence



One-Car Garage for Parking, Workshop, and Storage



Steps from the UNC Asheville Nature Trails



Fantastic Curb Appeal

Tastefully renovated ranch home in the lovely Five Points neighborhood, close to the Greenway, UNCA/Botanical Gardens, and walking distance to downtown Asheville. Western North Carolina main-level living with long-range mountain views from the sunny back deck. Lavish outdoor living includes the backyard garden oasis with flowering trees, a stone-surround fire pit, and a new beautiful bamboo fence. Too many renovations to mention them all! Entertain from the updated kitchen and enjoy al fresco dining with friends and family. Three bedrooms and two full bathrooms on the main level. Newly finished basement includes a large bedroom suite with office nook, full bathroom addition, and lots of extra conditioned storage. One-car garage could be a great workshop for the hobby enthusiast.



For more information, please contact:

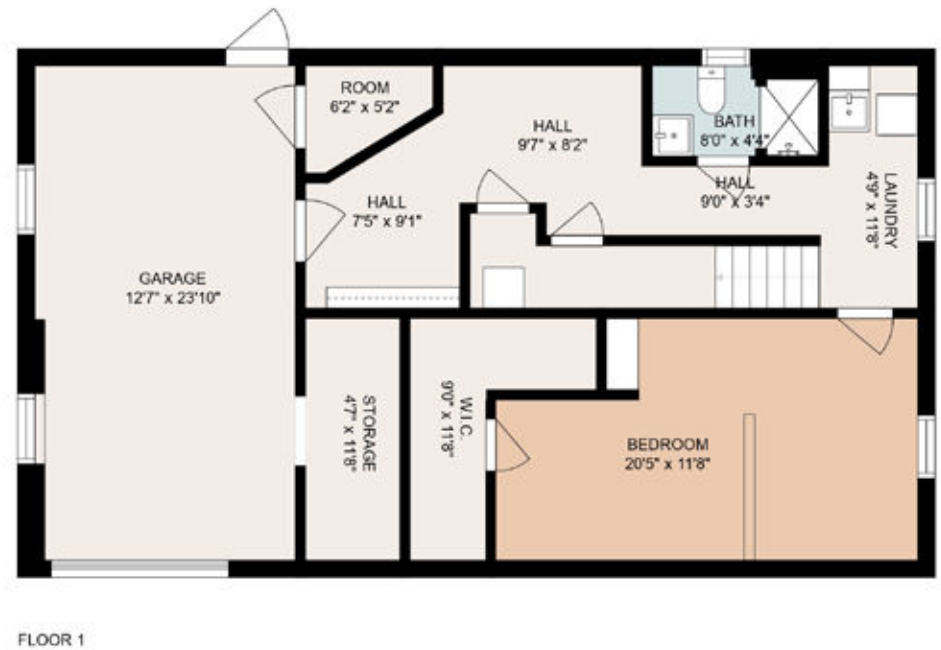
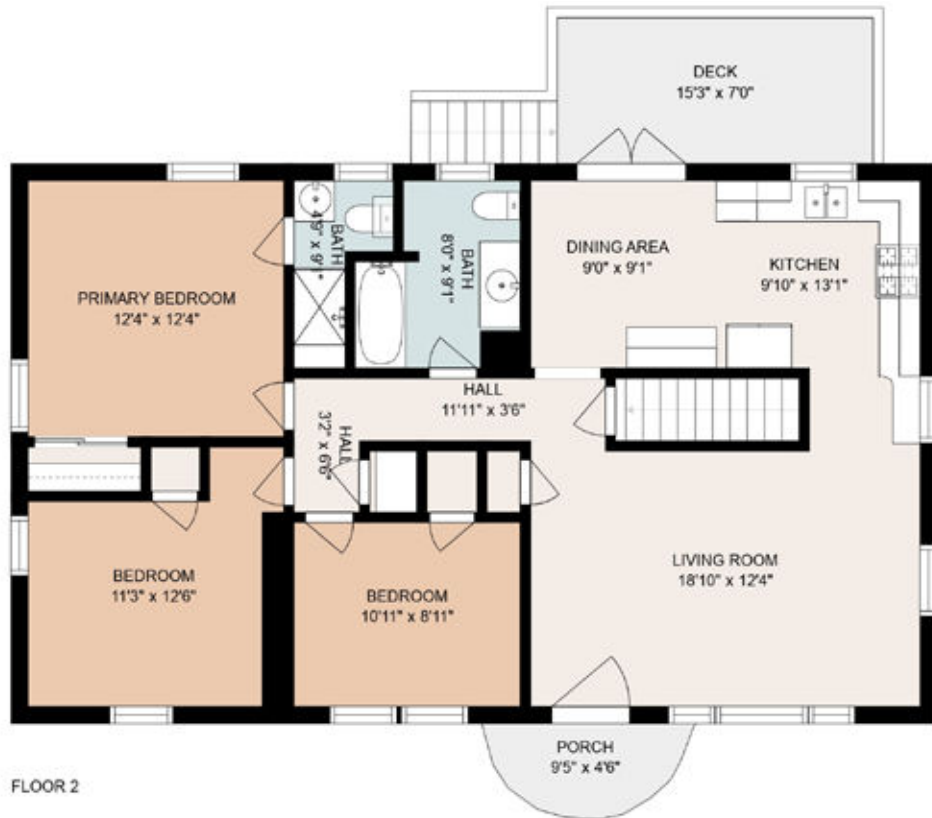
**MIKE FIGURA**

**828.337.8190**

**MIKE@MYMOSAICREALTY.COM**

#### DIRECTIONS

FROM DOWNTOWN ASHEVILLE: Take Broadway Avenue north to Five Points. Take a slight right onto Mount Clare Avenue. Continue across Hillside and stay left onto Marlowe Drive. 32 Marlowe Drive is on the left. Sign in the yard.



## 32 MARLOWE DRIVE

Remodeled Ranch Home in Five Points

Asheville, NC 28801

## PLANT LIST

Pollinator garden, fruit trees and native plants create a garden oasis with flowering trees, a fire pit, and a beautiful bamboo fence. Plants and trees include:

- Blueberries
- Figs
- Milkweed
- Carolina jessamine
- Inkberry holly
- Heather
- Verbena
- False indigo
- Thyme
- Hostas
- Strawberries
- Lenten rose
- Rosemary
- Lavender
- Sage
- Coneflower
- Echinacea
- Cypress
- Redbud
- Japanese maple (red)
- Arborvitae
- Holly
- Oak leaf hydrangea
- Azalea
- Rhododendron
- Elderberry (two kinds)
- Native grasses
- Bleeding heart
- Sedum
- Creeping phlox
- Goldenrod
- Ironweed
- Joe Pye weed
- Bee balm
- African basil
- Cardinal flower
- Lobelia
- Aster
- St John's wort
- Mint
- Carolina lupine
- Mums
- Mountain mint

