



## 16 LOWELL STREET

Cute Kenilworth Cottage Close to Biltmore Village



**MOSAIC**  
COMMUNITY LIFESTYLE REALTY

3 Bedrooms, 2 Bathrooms  
1,290 Square Feet 0.18 Acre  
MLS #3747740

## INFO

16 Lowell Street  
Asheville, NC 28801  
3 Bedrooms, 2 Bathrooms  
1,290 Square Feet, 0.18 Acre  
MLS #3747740

## FEATURES

- Super-cute Kenilworth cottage
- Conveniently located close to Biltmore Village's restaurants and shopping; just 1.5 miles to downtown Asheville
- Available furnished and move-in ready
- Newer HVAC, roof, primary suite bathroom
- New interior and exterior paint
- Convenient, main-level living
- Updated lighting
- Beautiful oak floors
- Original kitchen has ample cabinet space, newer washer/dryer and appliances
- Open-concept kitchen and dining area
- Primary bedroom suite has separate entrance — great for potential homestay or guests
- Ensuite bathroom has white-tiled shower stall and a beautiful glass door



Private Feel But Less Than a Mile From Biltmore Village

- Spacious guest bedrooms
- Third bedroom is used as an office/guest bedroom
- Tons of natural light
- Great outdoor areas for entertaining
- Lovely elevated lot with private feel
- Great for first-time homebuyer, or as a second home
- Plenty of parking in the shared alley/driveway



Foyer Opens to Living Area



Inviting Living Room with Oak Floors



Large Picture Window



Available Furnished



Cozy Family Room with Access to Stone Patio



Abundant Natural Light



Updated Lighting Throughout



Dining Area as Room for a Large Table

**16 LOWELL STREET**  
Kenilworth Cottage Close to Biltmore Village  
Asheville, NC 28801



Newer Washer, Dryer, Refrigerator, and Dishwasher



Kitchen Features Ample Cabinet Space



Primary Bedroom Has Separate Entrance



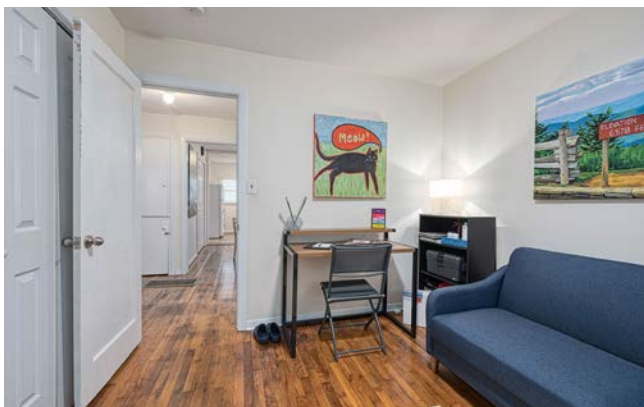
Spacious Primary Bathroom



Light and Bright Second Bedroom



Third Bedroom Makes a Perfect Home Office



Office/Bedroom Would Be Great for Guests



Original Tile with Updated Tub Surround and Fixtures



Ample Parking From Shared Alley/Driveway



Newer Roof (2013)



Patio Is Great for Entertaining



Nice Spot for Cocktail Hour!



Enjoy This Private Setting, So Close to Town

Enjoy the beauty of Kenilworth in this super-cute cottage located on a very quiet street. Available turnkey/furnished — move right in! Under a mile to Biltmore Village restaurants and shopping, and only 1.5 miles to downtown Asheville. Lovely elevated lot with private feel is great for first-time homebuyers, or for those looking for a second home or one-level living. Many updates in 2013-2014 — roof, HVAC, master bathroom, interior and exterior painting, updated lighting, and opening up the kitchen. Beautiful oak hardwoods in main living areas and bedrooms; cozy carpet in primary suite and bonus room. Shared alley driveway provides tons of off-street parking in the back. Pointer sign to parking behind home.



For more information, please contact:

**VANESSA BYRD**

828.275.8534

VANESSA@MYMOSAICREALTY.COM

## DIRECTIONS

From downtown Asheville: Take Biltmore Avenue south and turn left on Caledonia Road, then right onto Springdale Road. Lowell Street is on the right, but parking is behind home — turn right at alley with pointer sign. Home is at end of alley/driveway.