



31 WHIPPOORWILL LANE

Move-in-ready Ranch Home on 4+ Acres



MOSAIC
COMMUNITY LIFESTYLE REALTY

3 Bedrooms, 2.5 Bathrooms
2,141 SF + 2,082 SF Unfinished Basement • 4.37 Acres
MLS #4008867



INFO

31 Whippoorwill Lane
Swannanoa, NC 28878
3 Bedrooms, 2.5 Bathrooms
2,141 SF + 2,082 SF Unfinished Basement • 4.37 Acres
MLS #4008867

FEATURES

- New interior and exterior paint
- New carpet in bedrooms and living room
- New stove, hood vent, and dishwasher
- Kitchen has ample counter and cabinet space
- Main-level access with two-car garage
- Split floor plan
- Primary bedroom has walk-in closet and French doors that lead you to the outdoor deck
- Primary bedroom has an ensuite bathroom with double-sink vanity
- Large spacious living room with stone hearth fireplace and vaulted ceiling
- Wood-burning stove in living room
- Lots of windows and natural ambient light throughout house
- Eat-in breakfast nook
- Formal dining room with great views
- Large back deck with year-round views



Covered Front Porch with Winter Views

- All bedrooms have ceiling fans with lights
- Covered front porch
- Laundry on main floor
- 2082 SF unfinished basement on slab with high ceilings
- Basement has a plumbed and functional bathroom
- Plenty of dry storage
- Level yard space for gardening or play
- Rock wall runs alongside established flower beds
- Paved driveway and plenty of level parking



Large Living Room



Stone Hearth Centerpiece



Wood-Burning Stove in Living Room



Great Spot to Relax



Central Living Room Has Vaulted Ceiling



Formal Dining Room



Convenient Kitchen Island • Ample Cabinet/Shelf Space



Garage Hallway Access



Bright Kitchen with New Appliances



Eat-in Breakfast Nook



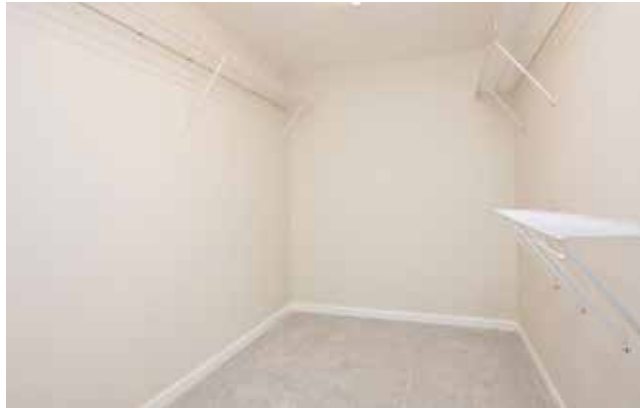
Laundry Room off Kitchen



Bright Primary Bedroom with Deck Access



French Doors Add to the Bright and Light Primary Suite



Primary Bedroom's Walk-in Closet



Ensuite Primary Bathroom



Great Views from Sunny Second Bedroom



Good-Sized Closets with Shelf



Ceiling Fan and Light in Each Bedroom



Second Bathroom • Tub/Shower Combo



Expand Your Living Space



Plumbed Bathroom in Basement



Workshop Space



Two-Car Garage



Back Deck Access from Living Room, Primary Bedroom



Year-Round Views



Great Spot to Garden or Relax



Established Garden Beds and Rock Wall



Tucked Away on 4+ Acres of Privacy



Side Yard, Ideal for Pets and Play



Level Parking



Home Sits on Level Knoll



Newly Painted Home

Beautiful, move-in-ready ranch home on more than four acres offers a private retreat just minutes from I-40 and downtown Asheville. This home has many updates including new carpet, fresh interior and exterior paint, and some appliances. Level entrance from garage leads you into the kitchen where you'll find a flowing and spacious floor plan. The kitchen has a new stove, vent hood, and dishwasher, and is framed by the formal dining room and breakfast nook. The living room is an entertainer's paradise with vaulted living room ceilings, wood stove, and access to back deck. The primary bedroom features a walk-in closet, double vanity sinks, large tub, and French doors to deck. All bedrooms have wonderful natural light and great views. Large, unfinished basement has high ceilings and a plumbed bathroom already in place! This is great space for expanding your livable footprint. Home is equipped with 25 MB internet service.



For more information, please contact:

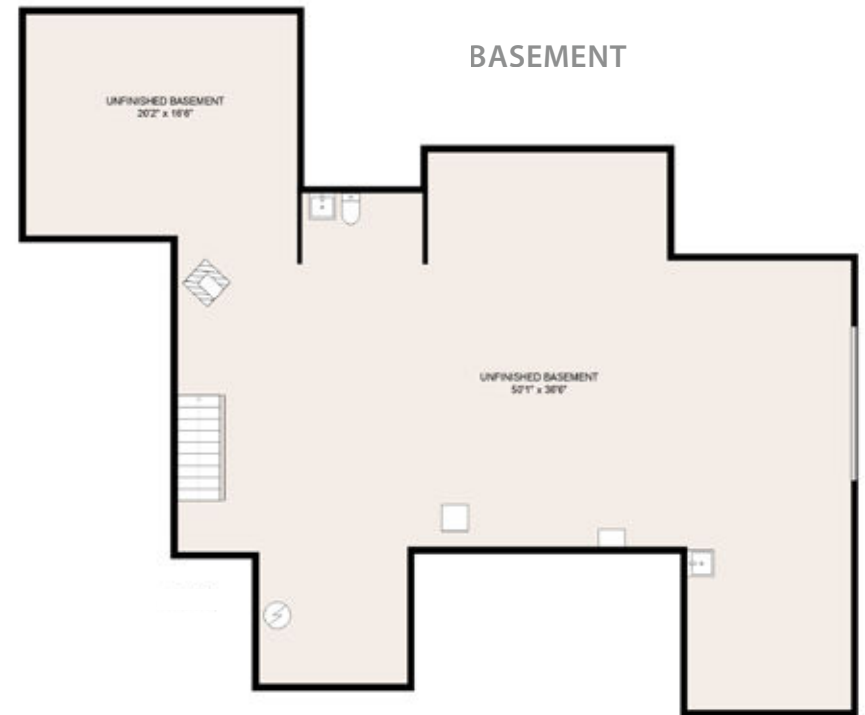
STACEY ENOS

828.712.2069

STACY@MYMOSAICREALTY.COM

DIRECTIONS

FROM DOWNTOWN ASHEVILLE: Take US-70E from Asheville and turn left on Warren Wilson Road. Turn left on Bee Tree Road, then right onto Watch Knob Lane. Lost Whippoorwill is at next right; #31 is the second house on the right. No drive-bys, please; house is not visible from road.



31 LOST WHIPPOORWILL LANE
Floor Plans