



 VIRTUAL TOUR

78 LINDEN AVENUE

Spanish-Influenced "Mountain Mediterranean" Home • Central Asheville



MOSAIC
COMMUNITY LIFESTYLE REALTY

3 Bedrooms, 1 Bathroom
2,103 SF (Plus 332 SF unfinished attic; 1,942 SF unfinished basement)

0.26 Acre
MLS #3748511



INFO

78 Linden Avenue, Asheville, NC 28801

3 Bedrooms, 1 Bathroom

2,103 SF (Plus 332 SF unfinished attic; 1,942 SF unfinished basement)

0.26 Acre

MLS #3748511

FEATURES

- Spanish-influenced “mountain Mediterranean” home in central Asheville, minutes to downtown
- Rare opportunity to bring one of Asheville’s last remaining gems back to its original glory
- Fabulous location, great bones, and with the high cost of lumber, an excellent alternative to a custom home without building new
- Historical details highlight the home’s charm
- Convenient central location with the ability to walk or bike to downtown Asheville, parks, greenways, and north Asheville’s shopping and dining
- Boasts period details including original wood floors and interior doors, arched doorways (in two of the bedrooms), picture molding, wide trim, plaster walls, detailed brickwork, and exterior arched lintels
- Steam radiator heat for luxurious and comfortable heating
- 9+foot ceilings on the main level
- Covered front porch and sunny front patio
- Bright foyer with 9+foot ceiling and coat closet
- Sunroom off of the living room with built-in shelves and cabinets; large picture windows for great natural light

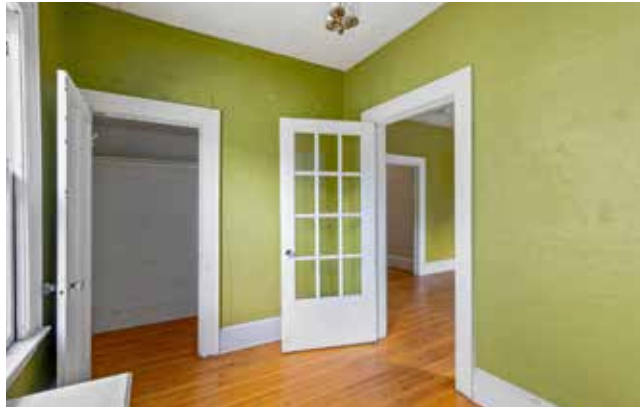


Spacious Yard Behind the Home

- Kitchen with walk-in pantry, adjacent breakfast nook, and access to the covered back deck
- Back yard has a fire pit and access from shared driveway
- Formal dining room with space for a large table, ready for entertaining
- Inviting living room features 9+foot ceiling and a wood-burning fireplace with a brick surround
- Hallway connects three spacious bedrooms, one full bathroom, and a linen closet on main
- Unfinished attic (stair access from main-level hallway) offers lots of possibilities
- Plenty of extra storage in the unfinished basement with interior access
- Level front yard, spacious back yard provide room for plants and play



Bright Foyer with 9-Foot Ceiling



Closet Closet and Entry to Living Room



Large Living Room Features a Brick-Surround Fireplace



Stunning Original Hardwood Floors and Plaster Walls



Steam Radiator Heat in Multiple Rooms



Space to Entertain



Lots of Windows for Great Natural Light



Sunroom Access from Living Room

78 LINDEN AVENUE

"Mountain Mediterranean" Home

Asheville, NC 28801



Bright and Cheerful Sunroom



Wide Doorway Connects Living Room with Dining Room



Great Flow through the Home



Formal Dining Room with Space for a Large Table



Wide Trim and 9-Foot Ceiling



Breakfast Nook between Dining Room and Kitchen



Kitchen with Walk-in Pantry and Back Deck Access



Multitude of Renovation Possibilities

78 LINDEN AVENUE

"Mountain Mediterranean" Home

Asheville, NC 28801



Hallway Connects Three Bedrooms on Main Level



One of Three Bedrooms on Main Level



Bedroom with Back Yard View



Spacious Third Bedroom



Arched Doorways in Two Bedrooms



Full Bathroom on Main Level



Unfinished Attic Is Full of Possibilities

78 LINDEN AVENUE

"Mountain Mediterranean" Home

Asheville, NC 28801



Interior Basement Access



Expansive Unfinished Basement



Plenty of Space for Extra Storage



Covered Back Deck with Built-in Storage



Mostly Level Back Yard



Backyard Fire Pit Is Ready for Gatherings



Shared Driveway for Rear Access to the Home



Full-Brick Exterior and Arched Lintels

78 LINDEN AVENUE

"Mountain Mediterranean" Home

Asheville, NC 28801



Excellent Curb Appeal

Spanish-influenced “mountain Mediterranean” home in central Asheville — minutes to downtown and walkable/ bikeable to shops and restaurants — this is a rare opportunity to bring one of Asheville’s last remaining gems back to its original glory. Fabulous location, great bones, and with the high cost of lumber, this home is an excellent way to customize without building new. Historical details intact add to the charm — period features include original wood floors and interior doors, arched doorways in two of the bedrooms, picture molding, wide trim, plaster walls, detailed brickwork, radiator heat, and exterior arched lintels. Main level includes a spacious living room with a brick-surround fireplace, amazing sunroom, formal dining room, kitchen, three bedrooms, and a full bath. Potential to expand the kitchen via the adjacent breakfast nook. Outdoor living with a level front yard and a back yard with shared driveway access. Tons of extra space in the unfinished attic and basement.



For more information, please contact:

MIKE FIGURA

828.337.8190

MIKE@MYMOSAICREALTY.COM

DIRECTIONS

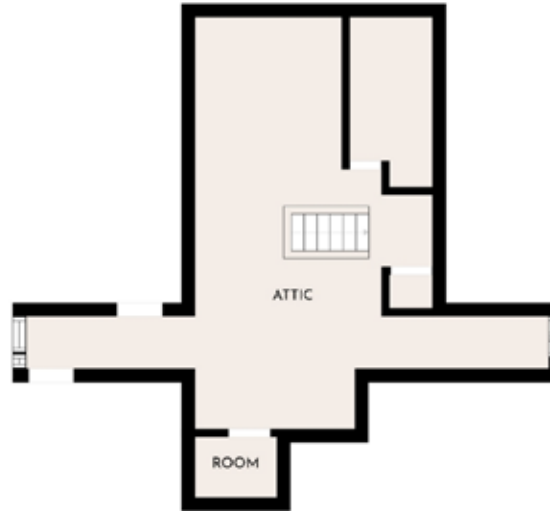
From downtown Asheville, take Merrimon Avenue north. Turn right onto Annandale Avenue. Turn left onto Robindale Avenue. Turn left onto Linden Avenue. 78 Linden Avenue is on the left. Sign in the yard.



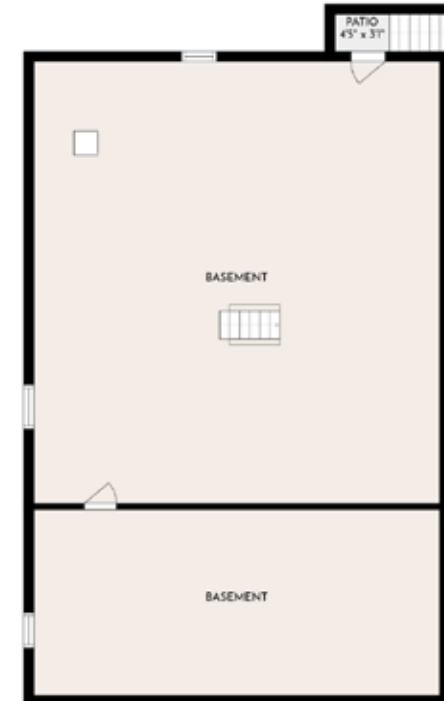
78 Linden Ave



First Floor
2103.2 sf



Attic
331.5 sf



Unfinished BSMT
1941.5 sf

Heated Living Space
First Floor - 2103.2 sf
Total - 2103 sf (rounded)