



 VIRTUAL TOUR

 Matterport™

52 LAWSON RIDGE ROAD

Traditional Two-Story Cape Cod in Lawson Ridge • Leicester



MOSAIC
COMMUNITY LIFESTYLE REALTY

4 Bedrooms, 2.5 Bathrooms
2,813 SF • 0.99 Acre
MLS #3674603

INFO

52 Lawson Ridge, Leicester, NC 27848

4 Bedrooms, 2.5 Bathrooms

2,813 SF • 0.99 Acre

MLS #3674603

FEATURES

- Lawson Ridge — a tranquil country neighborhood showcasing Western North Carolina's Appalachian Mountain vistas
- Easily accessible — directly off of New Leceister Highway and only 10 miles to downtown Asheville
- Private, oversized lot, beautifully landscaped for the gardener at heart
- Traditional two-story Cape Cod with covered wraparound porches for relaxation and enjoyment
- Savor your morning coffee while soaking in the warmth of the south-facing sun on the newly stained, covered front porch
- Covered, screened-in back deck captures the beautiful evening sun, setting behind the mountain ridges
- Exterior features low-maintenance vinyl siding and stone veneer exterior
- Accessible, level driveway and garage on the main level
- Experience easy living with an open floor plan and main-level living



Covered Porches with Porch Fans

- Grand, two-story vaulted foyer featuring a wide, open staircase to the second level
- Main level includes bright and ample floor-to-ceiling windows and beautiful hardwood floors throughout the main living areas
- Feel the warmth of the gas fireplace: updated mantel, stone fireplace surround, and detailed shiplap chase overlooking mountain vistas in the horizon
- Formal dining room, perfect for those large family and friend gatherings

FEATURES (CONTINUED)

- Breakfast bar and breakfast nook for casual dining
- Kitchen features stainless steel appliances, including newer dishwasher (2018) and newer refrigerator (2017), freshly painted cabinets, and new quartz counters
- Primary bedroom on the first floor with custom barn door, ceiling fan, walk-in closet, and newly remodeled ensuite bathroom
- Ensuite bathroom includes two vanities, luxury vinyl-plank water-resistant flooring, and a tiled walk-in shower with bench seating
- Laundry closet located on first floor near kitchen
- Newer washer/dryer and garage refrigerator convey with the home
- Two upper-level, oversized guest bedrooms with long-range mountain views, ceiling fans, and exceptional storage and closet space
- Welcome to the “Holiday Lounge” bonus room (or fourth bedroom) over the garage — kick back and stay awhile!
- Listen to the popping and crackling of the firepit while basking in its warmth on a cool mountain evening
- Outbuilding for your additional storage needs



Views for Miles and Miles



Sit Back and Rest a Spell



Entryway to Home Showcases Glistening Wood Floors



Bright Stairway with Gorgeous Vaulted Ceilings



Barn Door Entrance into Primary Bedroom Suite



Beautiful Wood Floors and Floor-to-Ceiling Windows



Farm-Style Fireplace, Shiplap Chase, and Stone Surround



Living Room with Mountain Views



Open Dining Area with Pristine Views



Spacious Dining Area with Access to Covered Side Porch

52 LAWSON RIDGE
Traditional Two-Story Cape-Cod
Leicester, NC 27848



Open Kitchen and Breakfast Nook



Freshly Painted Cabinets and Stainless Steel Appliances



Breakfast Bar • Access to Screened-In, Covered Back Deck



Guest Bath on Main Level



Laundry Area Directly Adjacent to Kitchen



Spacious Main-Level Primary Bedroom



Primary Bedroom Overlooks Covered Front Porch



Primary Bath with Two Vanities and Vinyl-Plank Flooring



Renovated Walk-in Shower and Additional Vanity Area



Light Filled Second Upstairs Bedroom



Large Upstairs Bedroom with Breathtaking Mountain Views



Plenty of Room for Study, Sleep, and Storage



Spacious Upstairs Guest Bathroom with Double Vanity



Additional Storage on Second Level



Stairway to the Holiday Lounge



Bonus Room Over Garage (Holiday Lounge)



Custom Handmade Bar Conveys with Purchase



Perfect for Entertaining or Spare Bedroom



Two Car Garage • Refrigerator Conveys



Supplementary Storage Areas in Garage



Level Drive Surrounded by Mountains



Recently Stained Porches



Wraparound Covered Porch and Firepit



Screened-in Covered Deck with Views for Miles



Ideal for Outdoor Entertaining



Storage Shed Directly off Back Porch

52 LAWSON RIDGE
Traditional Two-Story Cape-Cod
Leicester, NC 27848



Western North Carolina Country Masterpiece

Welcome to Lawson Ridge — a peaceful neighborhood nestled in the Appalachian Mountains. This well-maintained gem boasts 360-degree year-round views, and is located only 10 miles from downtown Asheville. This traditional, two-story Cape Cod home provides a floor plan laid out for easy living and entertaining. Enjoy your morning coffee while basking in the warmth of the south-facing covered front porch, or entertain on the screened-in back deck while watching the sun dip behind the mountains. You will not be able to resist warming yourself while roasting s'mores over the firepit. Experience the warmth of the fireplace and the beauty of the newly updated mantel. The dining room and newly updated kitchen are all perfect areas to gather for a meal. Additionally, on the main level, a hand-crafted barn door leads you into the primary bedroom, complete with a walk-in closet and ensuite bathroom; creating the perfect private retreat. Kick back and relax in the "Holiday Lounge" — complete with a custom-built bar. The second floor includes two very spacious guest bedrooms, both with mountain views and exceptional storage. With views like this, you will never want to leave!

YouTube

VIRTUAL
TOUR

Matterport™



For more information, please contact:

ELIZABETH PUTNAM

828.301.6374

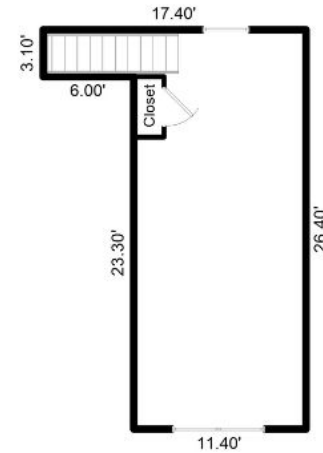
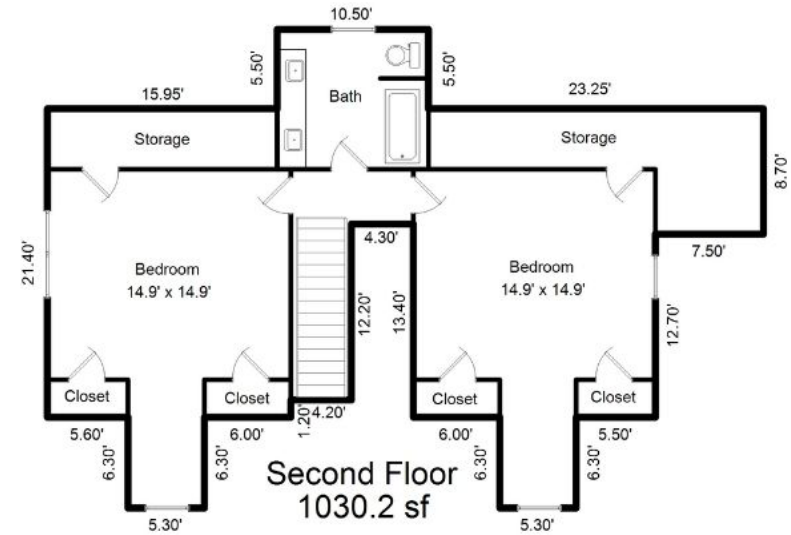
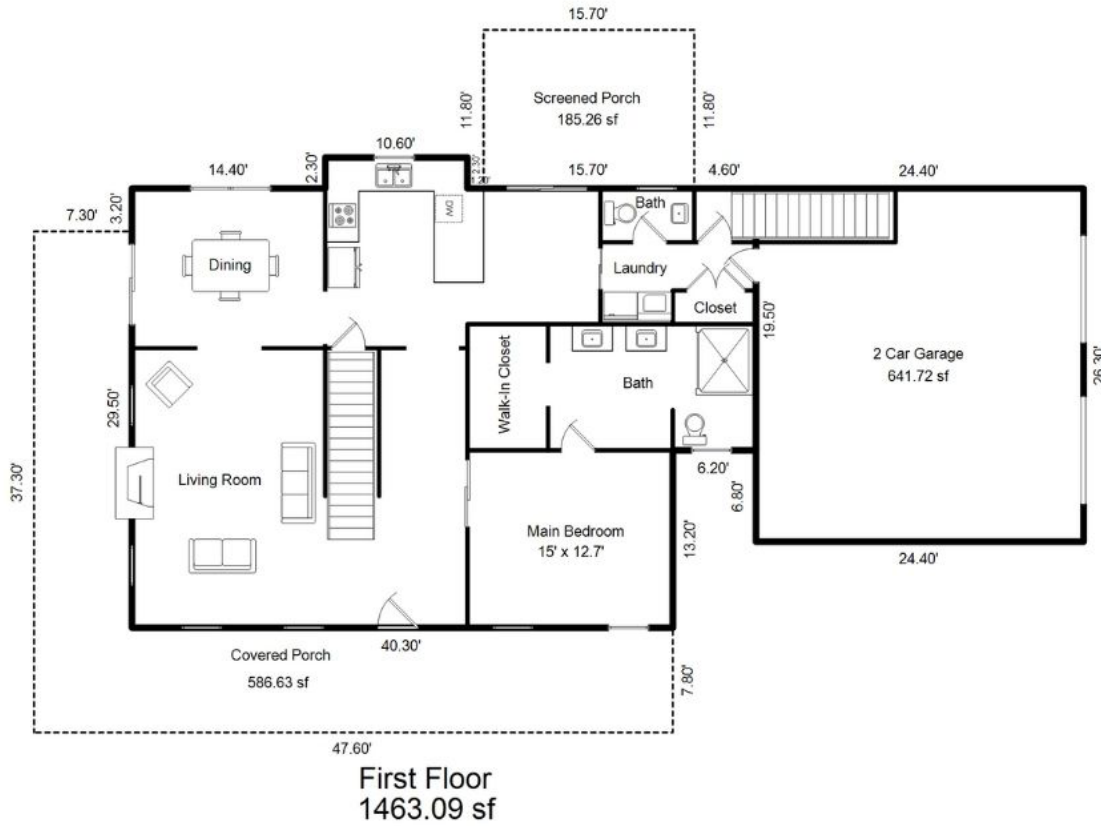
ELIZABETH@MYMOSAICREALTY.COM

DIRECTIONS

From downtown Asheville, take I-240 West, and take a right on New Leicester Highway. Drive approximately 7 miles. Turn right on Lawson Ridge Road. 52 Lawson Ridge is the second-to-last house on the left.



52 LAWSON RIDGE



Heated Living Space
 First Floor - 1463.09 sqft
 Second Floor - 1030.20 sqft
 Second Floor (FROG) - 319.56 sqft
Total - 2813 sqft (rounded)