



32 HERMITAGE LANE

Gorgeous Home in an Idyllic Setting • Weaverville

 VIRTUAL
TOUR



MOSAIC
COMMUNITY LIFESTYLE REALTY

3 Bedrooms, 3.5 Bathrooms
1,822 Square Feet • 1.04 Acre
MLS #3880006

INFO

32 Hermitage Lane
Weaverville, NC 28787
3 Bedrooms, 3.5 Bathrooms
1,822 Square Feet • 1.04 Acre
MLS #3880006

FEATURES

- 15 minutes to downtown Asheville and 5 minutes to downtown Weaverville
- Bright, open floor plan with vaulted ceiling.
- Primary bedroom with ensuite bathroom and private deck for morning coffee, reading, or glass of wine
- Kitchen features stainless steel appliances
- Kenmore Elite chef's stove with double oven
- Oversized windows bring in extra natural light
- Large, newly painted wood deck off of the kitchen makes outdoor entertaining a breeze
- Extra parking spots for guests
- Gardener's paradise with mature trees and landscaping
- Large garage with extra space for storage or workshop



Vaulted Ceiling Gives an Open, Airy Feel!

32 HERMITAGE LANE

Gorgeous Home in an Idyllic Setting

Weaverville, NC 28787



Desirable, Open-Concept Living



Oversized Windows Bring in Lots of Natural Light



Stainless Appliances • Kenmore Elite Double-Oven Range



Charming Half Bath on Main Level



Primary Bedroom Suite on Main Level



Ensuite Bathroom for Primary Bedroom



Light and Bright Second Bedroom



Third Bedroom (Currently Used as an Office)

32 HERMITAGE LANE

Gorgeous Home in an Idyllic Setting

Weaverville, NC 28787



Bonus Room (Currently Used as an Airbnb Space)



Large Laundry Room



Upstairs Bathroom with Tiled Tub/Shower Surround



Garage has Extra Space for Storage or Workshop



Private Deck off of Primary Bedroom



Roomy Back Deck for Grilling or Entertaining



Enjoy the Outdoor Spaces!



Nature Lover's Delight

32 HERMITAGE LANE

Gorgeous Home in an Idyllic Setting

Weaverville, NC 28787



Large, 1.04-Acre Lot



Huge Back Yard for Gardening, Pets, or Play



Stroll through Peaceful Pathways



Well-Loved Gardener's Paradise

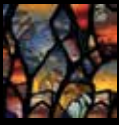


Mature Trees Surround Home

32 HERMITAGE LANE

Gorgeous Home in an Idyllic Setting

Weaverville, NC 28787



Gorgeous Composite Front Deck

Gorgeous Weaverville home in an idyllic setting! This home boasts an open-concept floor plan, vaulted ceilings, and oversized windows for great natural light. The kitchen has stainless steel appliances, and a chef's stove with a double oven for creating culinary delights! The large deck on the main level makes outdoor entertaining a breeze. The primary bedroom has an ensuite bathroom and private deck for morning coffee, reading, or glass of wine. The garage has extra space for storage or workshop capabilities. Just 2 miles to all that Weaverville has to offer — the Lowe's/Walmart center, Publix/Ingles, and the restaurants/breweries on Main Street. 15 minutes to downtown Asheville. Strong investment capability via rental or Airbnb (buyer to confirm).



For more information, please contact:

KELLY CATES WILENSKY

828.273.3239

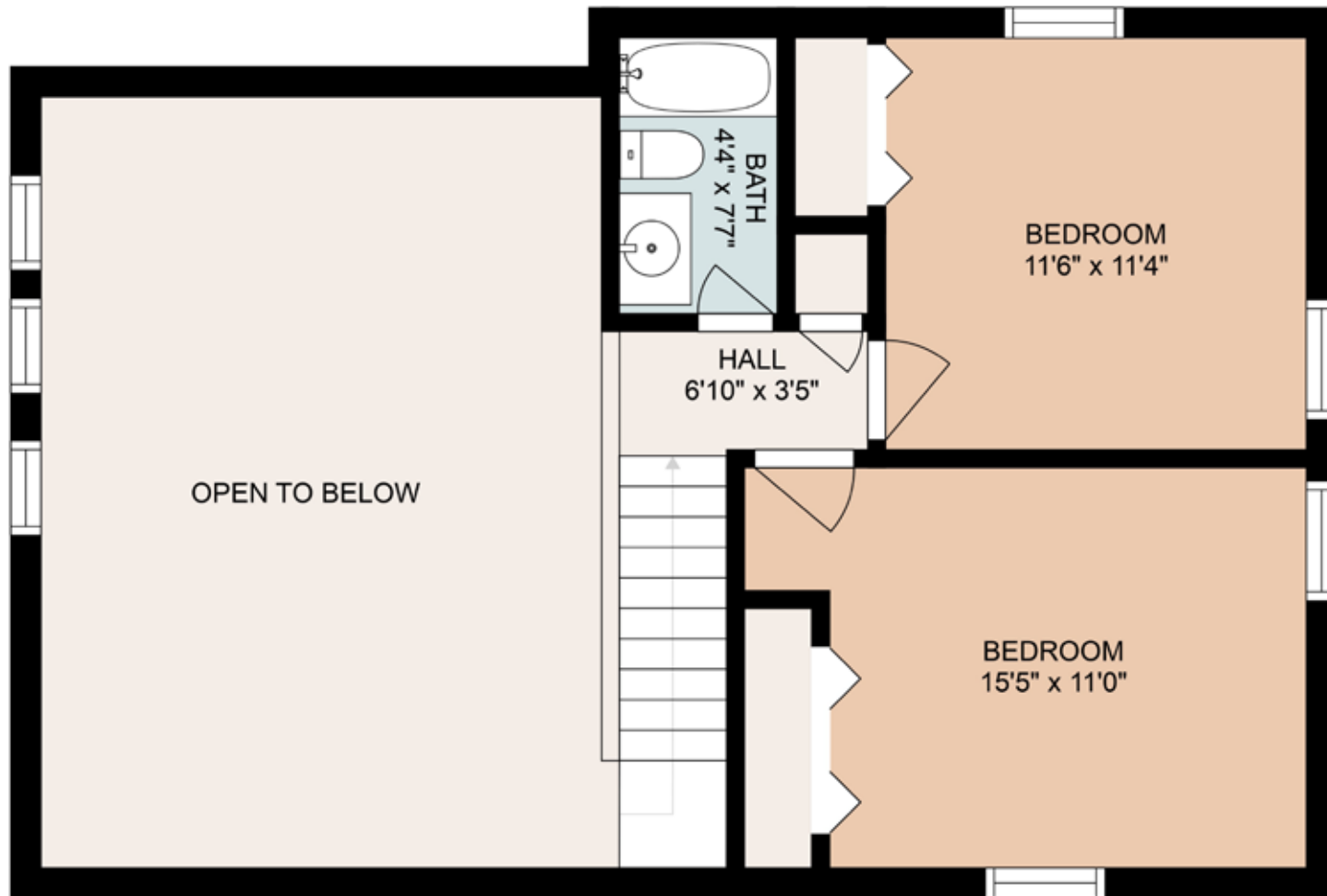
KELLY@MYMOSAICREALTY.COM

DIRECTIONS

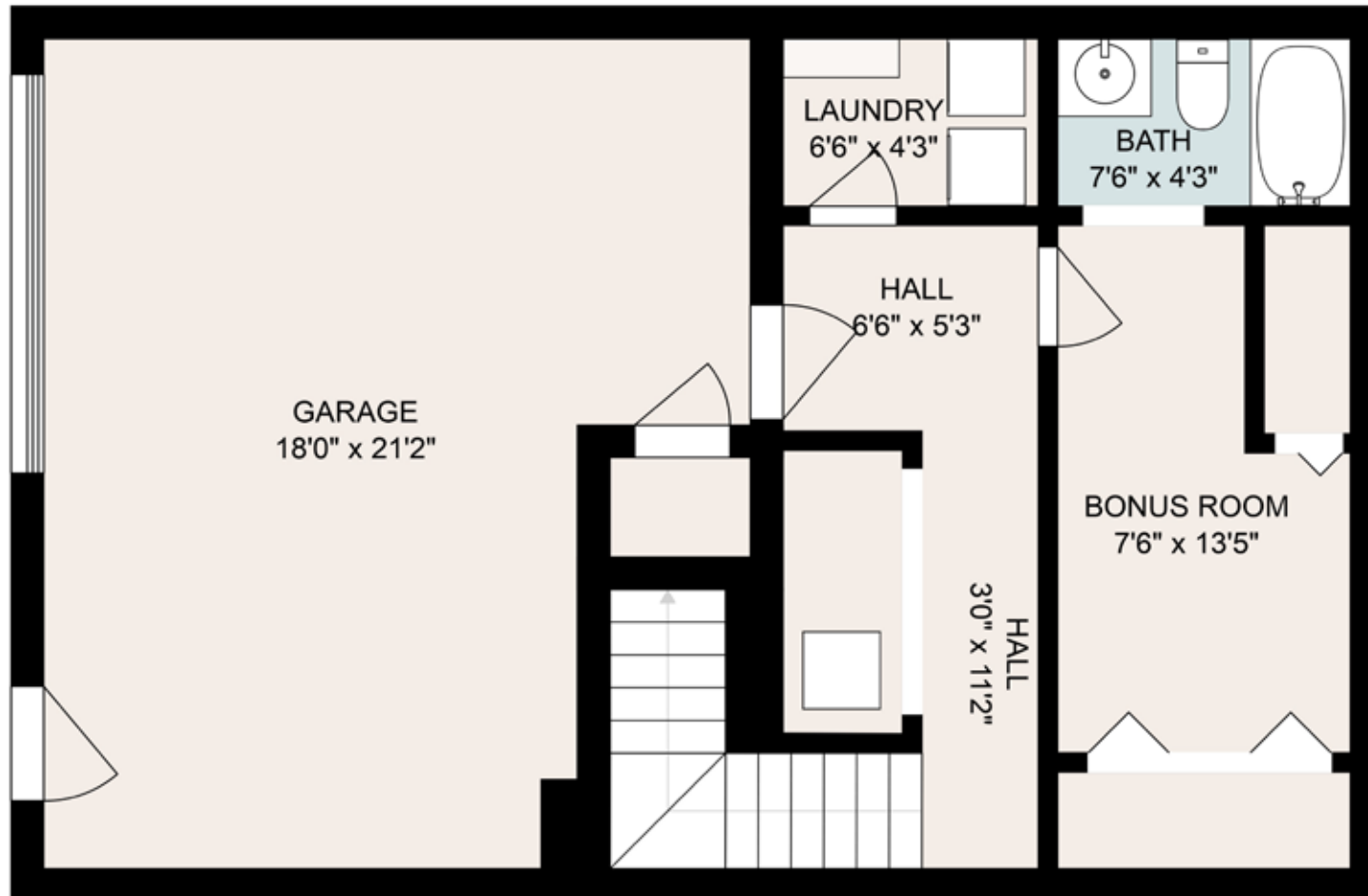
FROM ASHEVILLE: Take I-26 West, exit 19-A, continue forward on US-25/70. Right onto Monticello, left onto Hermitage Lane. Take a LEFT at the three-way fork in the road; turn right at carport (you will see pointer sign) and end at house.



MAIN LEVEL



SECOND LEVEL



BASEMENT LEVEL