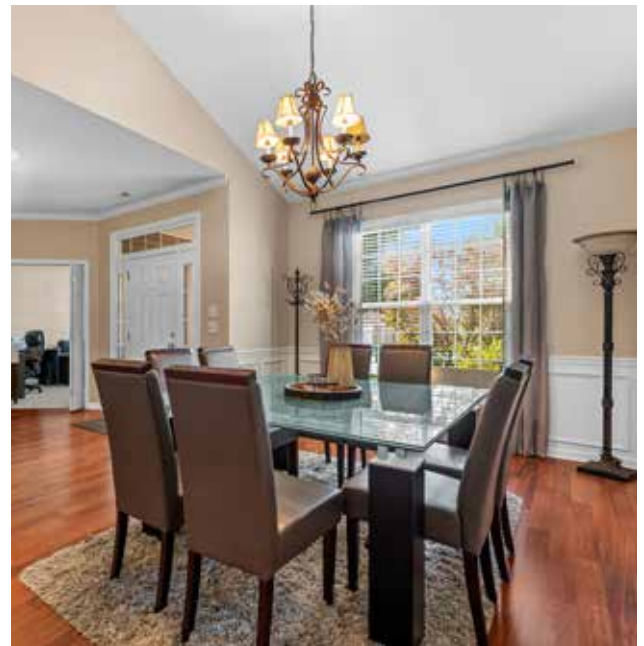


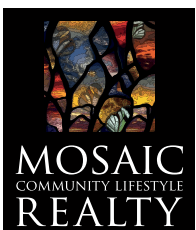
# MAIN-LEVEL LIVING IN HADLEY PARK



## ROOM TO BREATHE ...

7 HADLEY PARK WAY, ARDEN 28704  
3 BR/2 BA • 2,550 SF • 0.19-Acre Lot • MLS #3786626

Low-maintenance living in sought-after Hadley Park, convenient to Biltmore Park, the airport, Sierra Nevada, and countless outdoor recreation opportunities. Main-level living with generous, open spaces. Living room is open to kitchen with a cozy gas fireplace. Impressive dining room with vaulted ceiling and wainscoting. Quartz countertops, pre-finished wood flooring, pantry, and plenty of storage in the lovely kitchen with a casual dining area and access to a peaceful screened porch. Oversized primary suite includes a spacious bathroom with granite double vanity, garden tub, and shower. Fabulous walk-in closet with custom built-ins. Dedicated office space on the main level and bonus room above the garage for additional living or work space. Enjoy the back yard, knowing the low HOA fees cover lawn maintenance. Double-car garage with storage. Great shopping, dining, hiking, biking, and river rafting are just minutes away. Home is currently rented.



FOR MORE INFO:  
**CAROL MARIN**  
**828-545-2712**  
CAROL@MYMOSAICREALTY.COM