



120 DUNWELL AVENUE

Immaculately Maintained Modern West Asheville Bungalow



MOSAIC
COMMUNITY LIFESTYLE REALTY

4 Bedrooms, 2 Full + 2 Half Baths
2,200 SF • 0.25 Acre
MLS #4030154

INFO

120 Dunwell Avenue, Asheville, NC 28806

4 Bedrooms, 2 Full + 2 Half Baths

2,200 SF • 0.25 Acre

MLS #4030154

FEATURES

- Energy star-certified modern bungalow
- Oversized, two-car garage with additional storage (1,000+ SF)
- Slate-tiled front porch
- Highlight of the living room is the gas fireplace with hand-tiled surround/apron
- Built-in bookshelves and custom trim
- Kitchen features quarter-sawn oak cabinets with blown-glass doors, granite countertops, and stainless steel appliances
- Nine-foot ceilings on the main and basement levels; eight-foot ceilings upstairs
- Large, aluminum-on-wood, double-hung windows provide an abundance of natural light
- Custom cellular blinds
- Solid-wood doors
- Primary suite is conveniently located on the main level
- Jetted tub in primary bathroom
- Walk-in closets and excellent storage throughout
- Sustainable bamboo floors
- Spray foam insulation



Relax on the Tiled Front Porch

- Whole-house charcoal and UV water filter
- Dual-zone HVAC
- Gas on-demand hot water heater
- Quarter-acre lot with a small creek bordering the property and plenty of buffer for privacy
- Mature landscaping features blueberry bushes, crepe myrtles, hydrangeas, and rhododendron
- Fenced-in yard
- Off-street parking is great — can fit 8+ cars!
- Within walking distance to Haywood Road
- Only a five-minute drive to downtown Asheville; 15 minutes to mountain bike trails at Bent Creek and the Blue Ridge Parkway



Come on Inside!



Mission-Style Front Door and Sidelights in Entryway



Living Room with Wood Floors



Gas Logs with Hand-Tiled Surround



Fireplace Is Flanked by Built-in Bookshelves



Lots of Natural Light



Dining Area with High-End Light Fixture



Nine-Foot Ceilings on Main Level



Open Floor Plan



Large Kitchen with Granite Countertops



Plenty of Room • Efficient Workflow



Stainless Steel Appliances



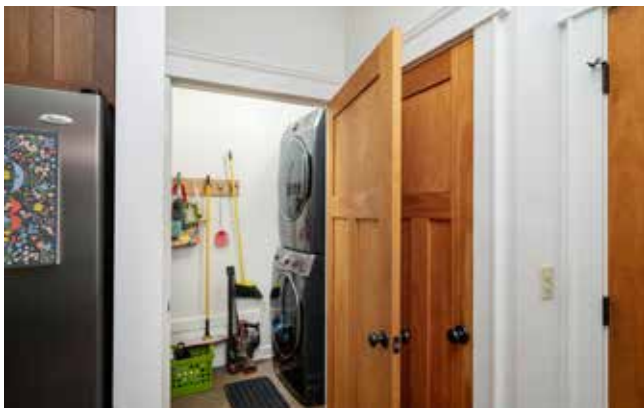
Updated Dishwasher • Ample Countertop Space



Quarter-Sawn Oak Cabinetry



Convenient Side Entry to Kitchen



Laundry Adjacent to Kitchen



Main-Level Half Bath

120 DUNWELL AVENUE
 Immaculately Maintained Modern Bungalow
 West Asheville, NC 28806



Primary Bedroom on Main Level



Large Primary Closet



Ensuite Bathroom • Step-in Shower and Dual Vanity



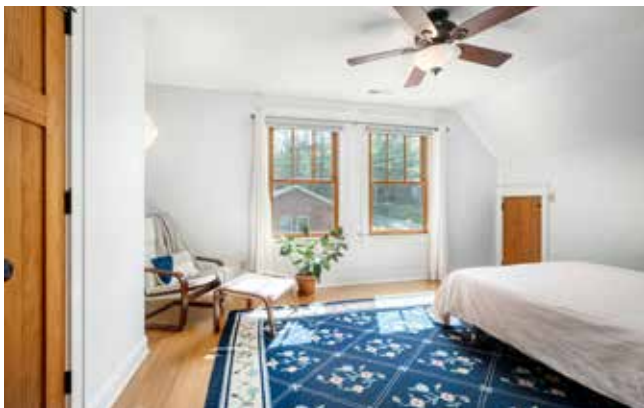
Tilework Surrounds the Primary Bathroom's Tub



Upstairs Front Bedroom



Second Upstairs Bedroom



Third Upstairs Bedroom



Upstairs Shared Bathroom

120 DUNWELL AVENUE
Immaculately Maintained Modern Bungalow
West Asheville, NC 28806



Basement Half Bathroom Is Just off the Stair Landing



Basement-Level Bonus Room



Bonus Room Is Adjacent to the Two-Car Garage



Utility Room Also Provides Storage ...



... and There Is Additional Storage under the Front Porch



Oversized Two-Car Garage ...



... with Workshop Space

120 DUNWELL AVENUE
Immaculately Maintained Modern Bungalow
West Asheville, NC 28806



Side Entrance



Covered Front Porch with Ceiling Fan



Level Yard



Raised Garden Beds • Blueberry Bushes



Fenced-in Area



Mature Landscaping



This Home Cuts a Fine Figure from Any Angle



Two-Car Garage • Ample Off-Street Parking



Fenced-in Front Yard

Immaculately maintained modern West Asheville bungalow on a level corner lot with mature landscaping, oversized two-car garage, and ample off-street parking. Built in 2007, this Energy Star-certified home boasts gas on-demand water heater, whole-house charcoal and UV light water filtration, stainless steel appliances, quarter-sawn oak cabinets, and a primary bedroom suite on the main level. Other interior features include nine-foot ceilings in the basement and main level, gas fireplace with hand-tiled surround, built-in bookshelves, bamboo flooring, and jetted tub in the primary bathroom. Sit on the covered front patio overlooking the fenced-in front yard with raised bed gardens and large blueberry bushes — or enjoy a short walk up to all the shops and restaurants on Haywood Road. All custom cellular shades and washer/dryer will convey.



For more information, please contact:

ERIC ALBEE

828.712.9395

ERIC@MYMOSAICREALTY.COM

DIRECTIONS

FROM DOWNTOWN ASHEVILLE: Take I-240 W and US-19 S/US-23 S/US-74 ALT W to Louisiana Avenue (about 3 miles). Turn left onto Louisiana Avenue, then right onto Pruitt Street. Turn right again onto Dunwell Avenue, and the home will be on the left. Sign in yard.