



115 DARCUS LANE

Well-Maintained Home and Grounds • West Asheville



MOSAIC
COMMUNITY LIFESTYLE REALTY

3 Bedrooms, 1 Bathroom
1,290 SF • 0.26 Acre
MLS #3882893



INFO

115 Darcus Lane
Asheville, NC 28806
3 Bedrooms, 1 Bathroom
1,290 SF • 0.26-Acre Lot
MLS #3882893

GENERAL

- Convenient location outside Asheville city limits, but only 11 minutes to downtown, and even less to the Haywood Road corridor of West Asheville
- Edible plantings including a gorgeous Chicago Hardy fig tree, berries (honeyberry, goumi, nanking cherry, blackberry, gooseberry, elderberry, blueberry, black currants), sage, thyme, and lavender. A separately fenced, raised bed garden is waiting for your seasonal planting endeavors
- Small front porch and partially covered rear deck for exterior living. Rear deck is perfect for a grilling spot and has built-in seating with easy flow to the back yard
- Basement has a one-car garage and more unfinished space that would be perfect for a workshop, gym, studio, or outdoor toy storage. There's also flexible finished space for a lower den or somewhere to get crafty



Cute Welcoming Front Deck — Note That Amazing Hydrangea and Those Hostas!

- Sunlit living room connects to an amazing open kitchen with granite countertops, cabinets galore, tile backsplash, and stainless appliances, including a gas range and vented hood
- Single full bathroom with tile floor, tiled shower surround, linen storage, and decorative wainscoting
- Three bedrooms with hardwood floors, ceiling fans, multiple windows, and roomy closets



Welcome to Hardwood Floors and Bright Spaces



West-Facing Picture Window at Left • Coat Closet at Right



Sunny and Open-Plan Living and Kitchen



Living Room into the Kitchen



What a Kitchen!



Stylishly Updated for the Home Chef



Wonderful Work Areas and Storage



Incredible Kitchen at This Price Point of Home

115 DARCUS LANE

Well-Maintained Home and Grounds

Asheville, NC 28806



Corner Front Bedroom with Closet and Ceiling Fan



Windows on Two Sides



Back Corner Bedroom • Closet and Ceiling Fan



Cute Third Bedroom (Note Dimensions on Floor Plan)



Third Bedroom with Closet and Dual Windows



Three Cute Bedrooms, Ready and Waiting!



Cute Bathroom with Tiled Floor and Shower Surround



Full Bathroom with Tile and Beadboard Wainscoting

115 DARCUS LANE

Well-Maintained Home and Grounds

Asheville, NC 28806



Great Basement Den, Craft, or Flex Space



Super-Functional and Useful



Who Doesn't Need a Little Stage in Their Basement?



Single Garage/Basement Flex Space with Foam Insulation



Radon System Installed, Note the Vent to the Right



Partially Covered Back Porch for Grilling and Chilling



Low-Maintenance Composite Decking and Siding



Come Sit a Spell While Grilling Some Tasty Treats



Great Solar Exposure and Sunny Spot for Gardening



Fenced Back Yard and BEAUTIFUL Chicago Hardy Fig Tree!



Honeyberry, Goumi, Nanking Cherry, Blackberry ...



Separately Fenced Raised Garden Beds



Solar Dryer Included!



Sunny Spot for Pets and Play



Three-Bedroom Ranch with Garage, So Close to Town!



Charming Home and Setting

What a sweet spot! Lovingly maintained three-bedroom 1960s West Asheville rancher is ready and waiting for its new owners. “What does the name Darcus mean, anyway?” you ask. Well, supposedly, it’s “strong, dark one” ... but I have to disagree. This cutie is anything but dark, with big and plentiful windows letting in natural light, AMAZING yard with great solar exposure for growing plants and veggies, even a separately fenced raised garden bed area. Mature and happy berries galore along with a KILLER fig tree! Strong ... okay, that might work, as in get ready for some Strong Work in this kitchen! Check it out, fantastic finishes at this price point with granite and tile, gas and stainless — look at that island, and all that storage! Get Strong in your basement gym, there’s plenty of room in the unfinished portion to assemble a squat rack, even some finished flex space to have a yoga or art studio ... Get Strong and Crafty! Stellar location only 11 minutes from downtown and outside city limits, what a GEM!



For more information, please contact:

CRAIG SEVERANCE

828.713.3757

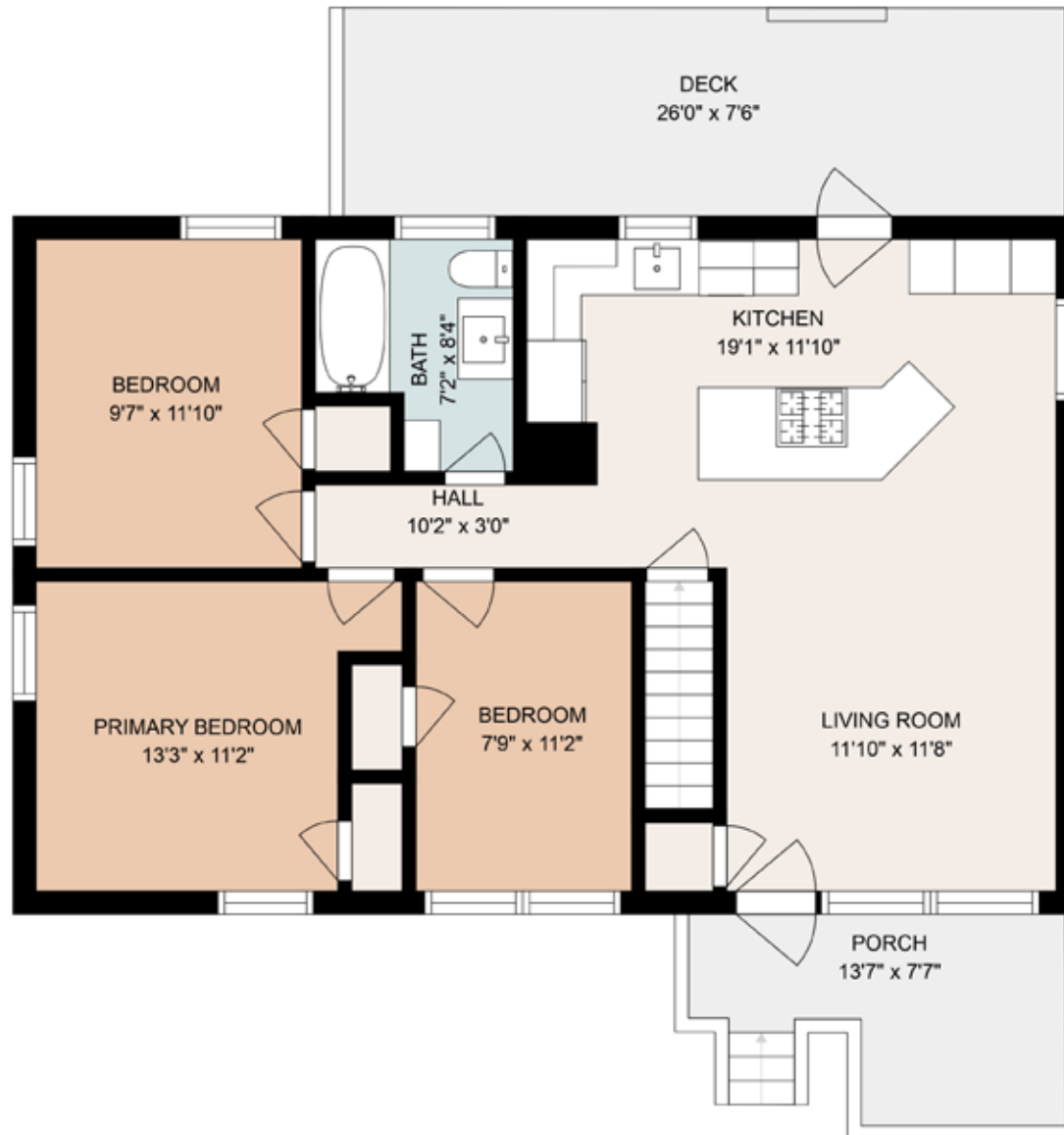
CRAIG@MYMOSAICREALTY.COM

DIRECTIONS

GPS works great! Take I-240 W to Patton Avenue, then turn right onto Johnson Blvd (directly across from Haywood at stoplight). Cross the railroad tracks and continue through after the four-way stop on Johnston School Road. Turn right at Darcus Lane and follow it to the house on the right.



MAIN LEVEL





BASEMENT LEVEL

