



25 DANIELBROOKE DRIVE

Sweet and Sunny Mountain Cottage Convenient to Downtown Asheville



MOSAIC
COMMUNITY LIFESTYLE REALTY

3 Bedrooms, 2 Bathrooms
1,357 SF • 0.72 Acre
MLS #3739480



INFO

25 Danielbrooke Drive
Asheville, NC 28806
3 Bedrooms, 2 Bathrooms
1,357 Square Feet • 0.72 Acre
MLS #3739480

FEATURES

- Sweet and sunny mountain cottage convenient to downtown Asheville
- Full-time residence or vacation home
- Easy one-level living with year-round mountain views
- Flowing, open floor plan with three spacious bedrooms and two full bathrooms
- Wood-grain laminate floor throughout
- Tons of natural light
- High ceilings in living room add an airy, expansive feel
- Efficient kitchen with natural wood cabinets and quality appliances
- Spacious primary bedroom with mountain views
- Primary bedroom has large walk-in closet and ensuite bathroom with double vanity and tub/shower combo
- Sunny guest bedrooms



Easy, One-Level Living

- Full guest bathroom with tile floor and tub/shower combo
- Beautifully landscaped — gardens, flagstone patio and walkway, stone firepit
- Sunny back deck off dining area
- Low-maintenance exterior
- Large lot
- County taxes



Front Porch Entry to Living Room



High Ceilings in Living Room



Easy Flow with Open Floor Plan



Dining Room with Porch Access



Wood-Grain Laminate Floor



High-Quality Appliance Package



Natural Wood Cabinets



Spacious Primary Bedroom with Mountain Views

25 DANIELBROOKE DRIVE

Sweet and Sunny Mountain Cottage

Asheville NC 28806



Primary Bedroom



Primary Bedroom's Ensuite Bathroom



Shared Guest Bathroom



First Sunny Guest Bedroom



Second Guest Bedroom with Mountain Views



Tons of Natural Light



Full Guest Bathroom with Tile Floor



Country Feel, Yet Only Minutes to Downtown Asheville

25 DANIELBROOKE DRIVE

Sweet and Sunny Mountain Cottage

Asheville NC 28806



Enjoy the View from the Expansive, Covered Front Porch



Beautifully Landscaped



Sunny Back Deck



Gather by the Firepit

Enjoy mountain living with year-round views — just minutes to downtown Asheville! Perfect for a full-time residence, second home, or vacation rental. This bright and sunny, low-maintenance cottage offers three bedrooms and two full baths on a large 0.72-acre lot. A flowing, open floor plan and high ceilings in the living room create an airy, expansive feel. Wood-grain laminate flooring throughout. Efficient kitchen boasts tons of natural wood cabinetry and a high-quality appliance package. Dining area opens to the back deck. The large, sunny lot is beautifully landscaped with gardens, a flagstone sitting area and stone firepit. Plenty of room for a vegetable garden, more flowers, or fruit trees. Spacious yard for pets and play. Conveniently located in popular West Asheville, minutes to shopping and restaurants.



For more information, please contact:

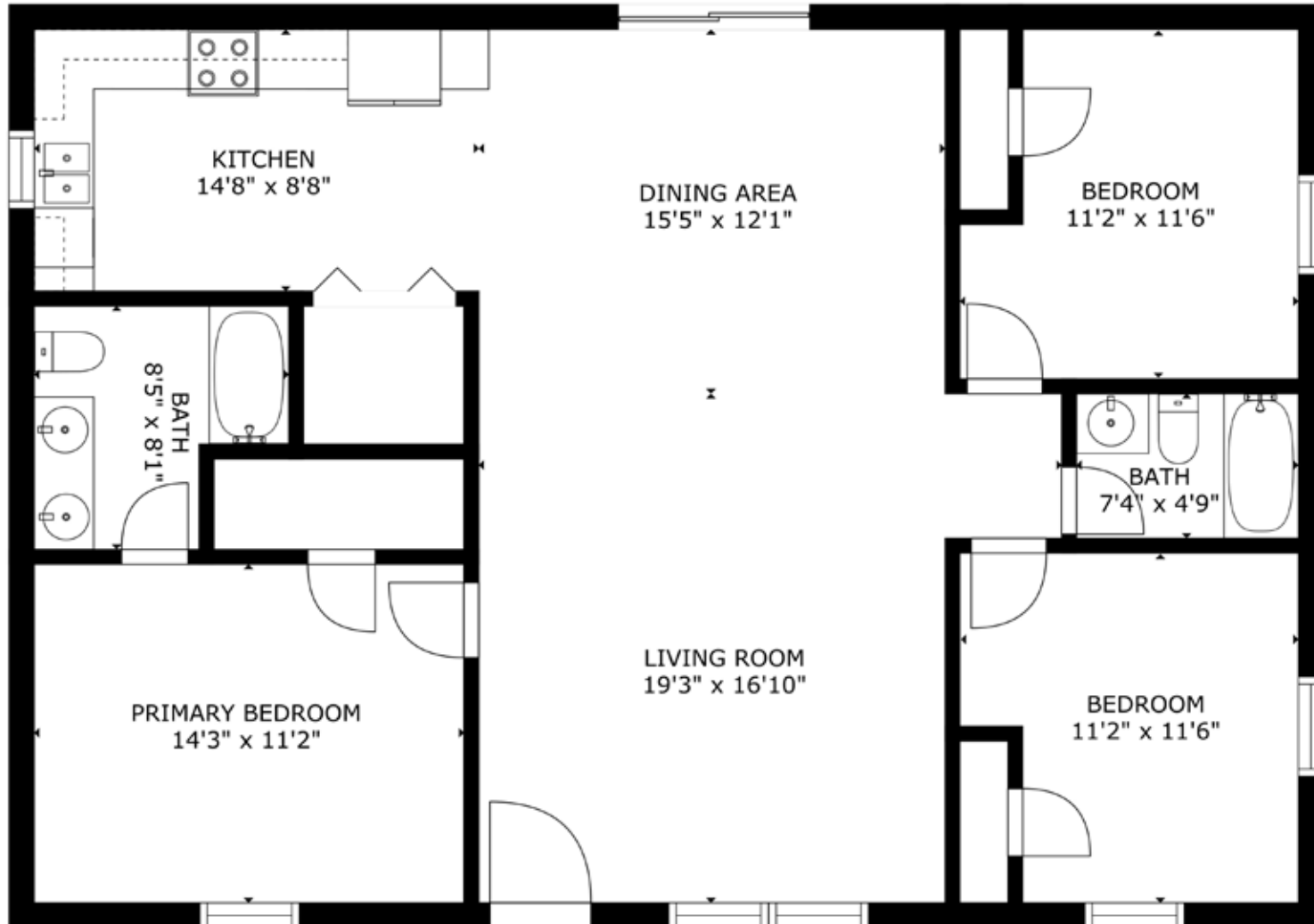
LEANN BOUND

828.713.2316

LEANN@MYMOSAICREALTY.COM

DIRECTIONS

From downtown Asheville: Take I-240 W to Exit 3A. Merge onto US-19 S/Patton Avenue. In about a mile, turn right onto NC-63/ New Leicester Highway. Follow the road for about 5.4 miles, then turn right onto Ramsey Drive. In about 0.75 mile, turn left onto Danielbrooke Drive. Home will be on the right.



TOTAL: 1357 sq. ft

INTERNAL SIZES AND DIMENSIONS ARE APPROXIMATE, ACTUAL MAY VARY.

25 DANIELBROOKE DRIVE

Sweet and Sunny Mountain Cottage

Asheville NC 28806