



24 CRAFTSMAN CIRCLE

Gorgeous Arts and Crafts Home • The Wildes at Chunn's Cove



MOSAIC
COMMUNITY LIFESTYLE REALTY

4 Bedrooms, 2.5 Bathrooms + Home Office
2,536 SF • 0.15 Acre • Corner Lot
MLS #3712528

INFO

24 Craftsman Circle Asheville, NC 28805
4 Bedrooms, 2.5 Bathrooms + Home Office
2,536 Square Feet • 0.15 Acre Corner Lot
MLS #3712528

FEATURES

- Arts and Crafts-style home located in The Wildes at Chunn's Cove, just two miles to downtown Asheville
- Less than a mile from Tunnel Road restaurants, shopping, grocery stores, and amenities
- Only a few minutes drive to the Blue Ridge Parkway
- Peaceful and walkable neighborhood with sidewalks
- Property located across from community greenspace/park with beautiful views of the east side of Town Mountain and no homes directly across the street
- East-west orientation
- Feels like country living, yet so close to downtown Asheville
- Modified "Kensington" model – and the largest home in the neighborhood
- True Arts and Crafts colors throughout
- Ceramic tile at entrance; nine-foot ceilings on main level
- Hardwood floors throughout lower level; wall-to-wall carpet on the upper level



East-West Orientation and Short-Range Views of Town Mountain

- Spacious chef's kitchen with granite countertops, ample wood cabinetry, double stainless steel sink, stainless steel appliances, four-burner gas stove, large pantry, and GE Spacesaver® microwave oven
- Recessed lighting throughout kitchen
- All newer appliances (Electrolux® stackable washer and dryer, also on the main level, convey with home)
- Primary bedroom suite on the main level features a bathroom with a one-year-old granite double-sink countertop and fixtures, a step-in shower with new glass doors, and plentiful storage in the gigantic walk-in closet



FEATURES (CONTINUED)

- Ceiling fans throughout
- Near the kitchen is the perfect home office, with exterior access via the fenced back yard
- Half bath on main level
- Spacious front upper and lower/double porches
- Adorable, fully fenced-in yard with accesses through kitchen and back office
- Extra-wide garage, perfect for storage and hobbies, has a utility sink
- Craftsman Circle slows and helps reduce traffic for a safer, more family-friendly neighborhood
- Quiet neighborhood with well-maintained homes
- Community greenspace with picnic/gazebo areas and paved sidewalks for strolling the neighborhood

UPDATES

- 2016: Re-painted trim and shingles, installed tile in kitchen, moved and added electrical switches and outlets
- 2017: Added closet system in primary bedroom
- 2018: New Rheem® hot water heater
- 2019: New kitchen appliances – gas stove, refrigerator, dishwasher, microwave, instant hot water supply at sink
- 2020: New air conditioner and coil; new washer, dryer



Several Outdoor Areas for Relaxation



Arts & Crafts Colors and Beautiful Light Throughout The Home



Entry Overflowing with Natural Light • Half Bath



Spacious, Cheery Living Room with Triple-Hung Window



Dining Area off Kitchen Has Access to the Fenced Yard



Chef's Kitchen with Breakfast Bar and Ample Work Space



Gorgeous Granite Countertops and Tile Backsplash



Newer Appliances and Handsome Cabinetry



Open Floor Plan Provides Great Flow for Entertaining



Home Office off the Kitchen with Exterior Access

24 CRAFTSMAN CIRCLE

The Wildes at Chunn's Cove

Asheville, NC 28805



Main-Floor Primary Bedroom with Vaulted Ceiling



Ensuite Bathroom with Double Vanity and Walk-in Closet



Pretty Second Floor Bedroom with Attic Access



Light and Bright Guest Bedroom ...



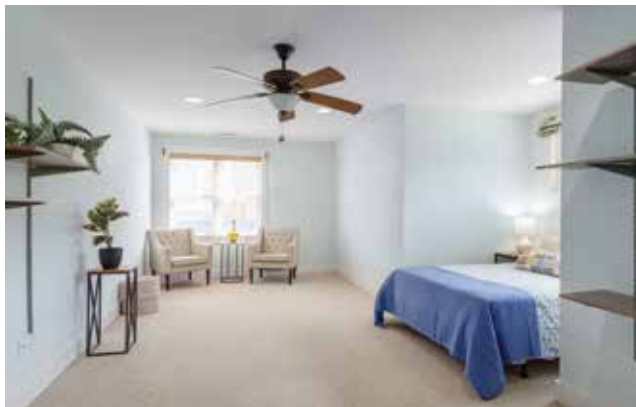
... with Access to the Sunny, Second-Level Porch ...



... Where You Can Relax and Enjoy the View



Second-Floor Guest Bathroom



Guest Bedroom Over the Garage

24 CRAFTSMAN CIRCLE

The Wildes at Chunn's Cove

Asheville, NC 28805



MOSAIC
COMMUNITY LIFESTYLE REALTY

60 Biltmore Avenue, Asheville, NC 28801 tel : 828.707.9556 fax: 800.553.1491

WWW.MYMOSAICREALTY.COM



Outside Access to Fully Fenced Yard from Back Office



Adorable, Fenced-in Back Yard Is Perfect for Pets and Play



Beautifully Landscaped with Lovingly Maintained Greenery



Double Front Porches Face the Community Park Greenspace



Gorgeous Arts and Crafts-Style Home on Corner Lot in The Wildes at Chunn's Cove

You'll find serene living in The Wildes at Chunn's Cove. Enjoy beautiful, short-range mountain views of the east side of Town Mountain in this peaceful, friendly, walkable community of well-maintained homes just two miles from vibrant downtown Asheville. This property is an Arts and Crafts-inspired, charming, and well-loved two-story home with double porches, an ideal home office/bonus room near the chef's kitchen, a primary bedroom suite on the main level with a double vanity and a huge walk-in closet, three bedrooms upstairs, and a fully fenced, level, and beautifully landscaped back yard. Situated directly across from the community park with no view obstructions. Stroll the community's paved sidewalks and enjoy easy access to all of Tunnel Road's conveniences and city utilities.



For more information, please contact:

LAURA MOYE

828.301.4518

LAURA@MYMOSAICREALTY.COM

DIRECTIONS

FROM I-240 W: Take Exit 6 (Chunn's Cove Road/Tunnel Road) and turn right at the end of the ramp. Go half a mile and turn right onto Mountainbrook Road. Take your first right onto Chunn's View Drive and you'll see The Wildes just ahead on the right. Follow the road to #24 across from community park.