



## 29 CHERRY LAUREL LANE

Well Laid-Out Internal Townhome Unit in Swannanoa



**MOSAIC**  
COMMUNITY LIFESTYLE REALTY

2 Bedrooms, 2.5 Bathrooms  
1,440 SF • 0.02 Acre  
MLS #4012340

## INFO

29 Cherry Laurel Lane, Asheville, NC 28803

2 Bedrooms, 2.5 Bathrooms

1,440 SF • 0.02 Acre

MLS #4012340

## FEATURES

- Brand-new Energy Star-certified townhome in beautiful Swannanoa community
- Conveniently located between Asheville and Black Mountain in a planned townhome community
- Open floor plan connects kitchen with dining/living room
- Beautiful vinyl plank flooring
- Sparkling kitchen with granite countertops and stainless steel appliances
- Patio doors leads to green space for privacy
- Large windows throughout for great natural light
- Two bedrooms and two full bathrooms on second level
- Powder room on main level
- Bedrooms wired for cable and internet
- Washer/dryer closet on second level
- Extra storage space on both levels of the home
- Professionally landscaped yard
- Low-maintenance exterior



Lush Greenspace and Wooded Area for Privacy



Convenient Granite Breakfast Bar



Open Floor Plan



Spacious Living Room Area



Kitchen Features Stainless Steel Appliances



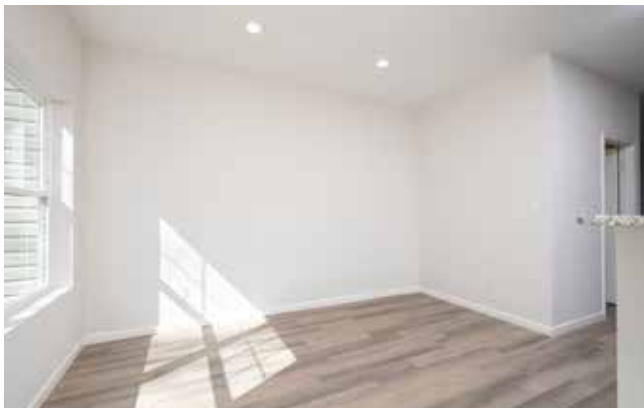
Granite Countertops



Plenty of Cabinets for Storage



Spacious Dining Area ...



... Light and Bright ...



... with Ample Area for Entertaining



Direct Access to Back Yard from Kitchen



Half Bathroom on Main Level



Second-Level Landing



Linen Closet on Second Level



Laundry Also on Second Level Landing



Primary Bedroom with New Carpet and Ceiling Fans



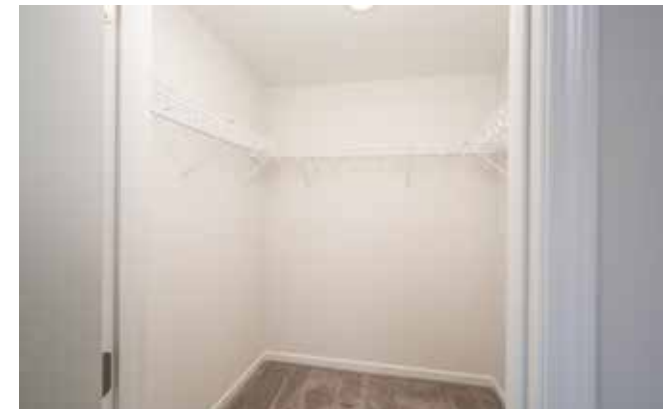
View from Primary Bedroom



Large Walk-in Closet in Primary Bedroom



Full Ensuite Primary Bathroom



Walk-in Closet in Primary



Lots of Backyard Greenspace



Bedroom #2 on Second Level



Bedroom #2 Closet



Second-Level Hallway Full Bathroom



Well Landscaped Back Yard

**29 CHERRY LAUREL LN**

Well Laid-Out Internal Townhome Unit

Swannanoa, NC 28778



Well Laid-Out Internal Townhome Unit

Brand-new Energy Star-certified townhome conveniently located between Asheville and Black Mountain, close to shopping and restaurants, in a planned community with some mountain views. Easy interstate access — 15 minutes to downtown Asheville; 10 minutes to Black Mountain. Beautiful vinyl plank floors on the main level with new carpet throughout second level. Tons of closet and storage space. Large windows for great natural light. Sparkling kitchen with granite countertops and stainless appliances opens to the dining/living area. Powder room on main level; two bedrooms and two full bathrooms on the second level. Large patio sliding doors look out to a professionally landscaped yard.



For more information, please contact:

**ANTHONY THOMAS**

**828.582.5865**

**ANTHONY@MYMOSAICREALTY.COM**

## DIRECTIONS

FROM DOWNTOWN ASHEVILLE: Take take I-40E to Exit 59; turn left on Patton Cove Road, then turn left on US-70W. Take a right on Riverwood Road, a left on Bee Tree Road, and a right onto Woodcreek Circle. Continue straight onto Cherry Laurel Lane. Unit will be on your right.