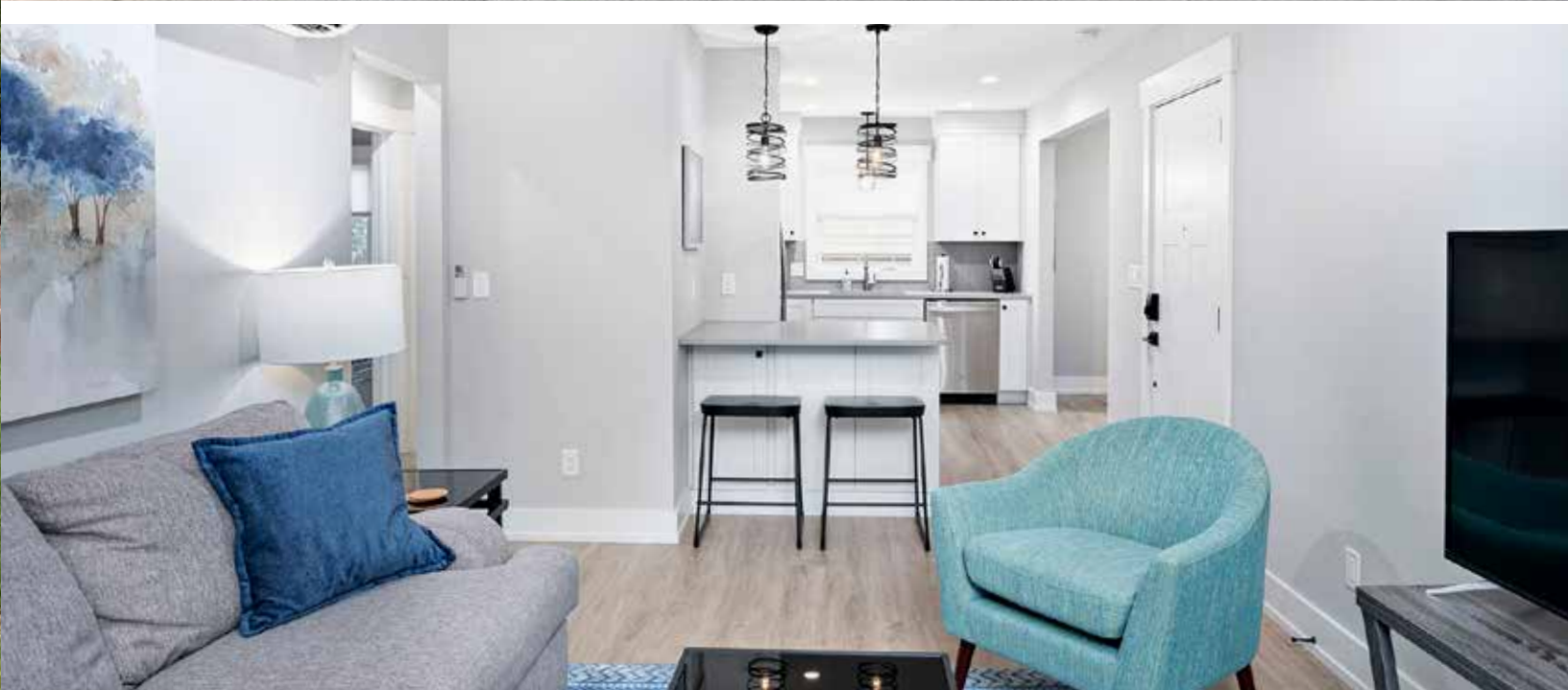


304 CHARLOTTE STREET, UNIT 2
ASHEVILLE, NC 28801



GROVE PARK



MYMOSAICREALTY.COM • DOWNTOWN ASHEVILLE • 828-707-9556

304 CHARLOTTE STREET | ASHEVILLE, NC 28801

304 CHARLOTTE STREET, UNIT 2
ASHEVILLE, NC 28801



GROVE PARK



INCREDIBLE GROVE PARK LOCATION!

Two newly remodeled 2 BR/1 BA stacked homes sold as one. As apartments 101 and 201 on the left side of 304 Charlotte Street, this unique property could be a second home with income from executive rentals. Fully furnished and provisioned, open floor plans and high-end finishes, solid wood cabinetry, stainless appliances, custom tile bath, full-size washer and dryer, and covered parking with bike storage. Abundant natural light and leafy views — parks across the street and one block away. Stroll down Charlotte Street to restaurants and shops. Only one mile to the heart of downtown Asheville and less than a mile to the Grove Park Inn restaurants, spa, and golf course. Lovely common area garden patios and private porches offer spaces to relax after a day of touring downtown or local breweries, enjoying a round of golf, hiking, bicycling, or many other activities that Asheville has to offer! (Apt 101: 831 SF/Apt 201: 844 SF; no interior connection. Sold as Unit 2.)

APT 101: 2 BEDS | 1 BATH | 831 SF
APT 201: 2 BEDS | 1 BATH | 844 SF
TOTAL HLA: 1,675 SF | MLS #3809338



CALEY BOWMAN
828-545-5067
CALEY@MYMOSAICREALTY.COM