

723 CENTER STREET
ASHEVILLE, NC 28803

MOSAIC
COMMUNITY LIFESTYLE
REALTY

SOUTH ASHEVILLE



MOSAIC
COMMUNITY LIFESTYLE
REALTY

MYMOSAICREALTY.COM • 828-707-9556

723 CENTER STREET | ASHEVILLE, NC 28803

723 CENTER STREET
ASHEVILLE, NC 28803

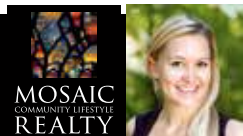
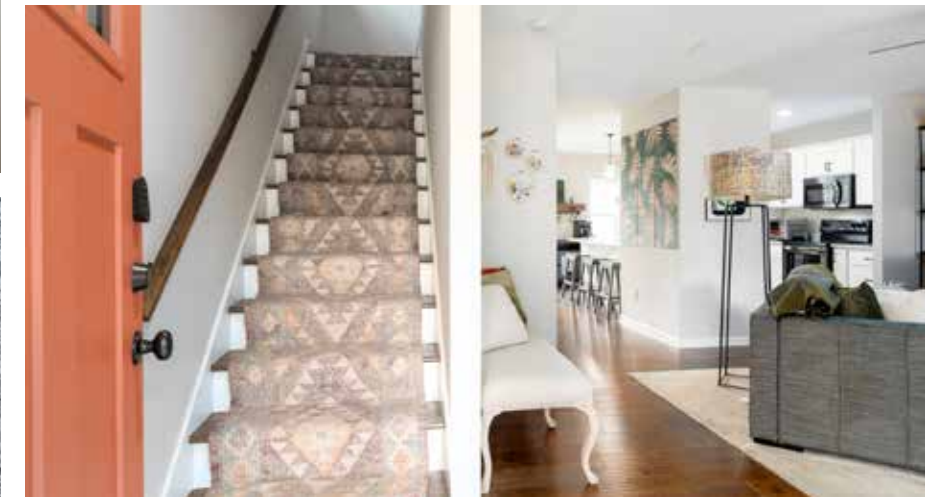
SOUTH ASHEVILLE



IMMACULATE HOME WITH SOLAR POWER, LOCATED JUST SOUTH OF BILTMORE VILLAGE

... on a charming street! Lots to love, including a gorgeous kitchen with black stainless steel appliances and a breakfast bar, two covered porches, and a fenced-in backyard. Lovely landscaping provides great curb appeal, and the yard is very usable AND low maintenance. All bedrooms + two full bathrooms comprise the upper level. The primary suite is spacious and its bath has a convenient dual vanity. There's a powder room on the main level for guests. Solar panels ensure excellent savings on electrical costs, and there is zoned heating and cooling. Wonderful street with several new-construction homes in a super-convenient location just one mile from Biltmore Village shops and restaurants; only three miles to downtown Asheville.

3 BEDS | 2.5 BATHS | 1,468 SF | 0.09 ACRE | MLS #4030416



CALEY BOWMAN
828-545-5067
CALEY@MYMOSAICREALTY.COM

723 CENTER STREET | ASHEVILLE, NC 28803

3 BEDS | 2.5 BATHS | 1,468 SF | 0.09 ACRE | MLS #4030416

FEATURES

- Charming home just south of Biltmore Village
- Nice street with lots of newer-construction homes
- Solar panels on roof allow for low electric bills (often a credit!)
- Convenient to Biltmore Village, downtown Asheville, and Hendersonville Road shops and restaurants
- Well maintained — still feels like new!
- Gorgeous kitchen with black stainless steel appliances and breakfast bar
- Covered front and side porches
- Spacious primary bedroom with an ensuite bathroom that has a dual vanity
- Fenced-in backyard and nicely landscaped front yard
- Powder room on main level
- Upstairs, there is a second full bathroom
- Low-maintenance, but very functional, yard

DIRECTIONS

FROM DOWNTOWN ASHEVILLE: Head south on Biltmore Avenue as it turns into Hendersonville Road. Pass Biltmore Village and then turn left on Yorkshire Street. Turn left again on Center Street. Home is on the left at the corner



723 CENTER STREET | ASHEVILLE, NC 28803

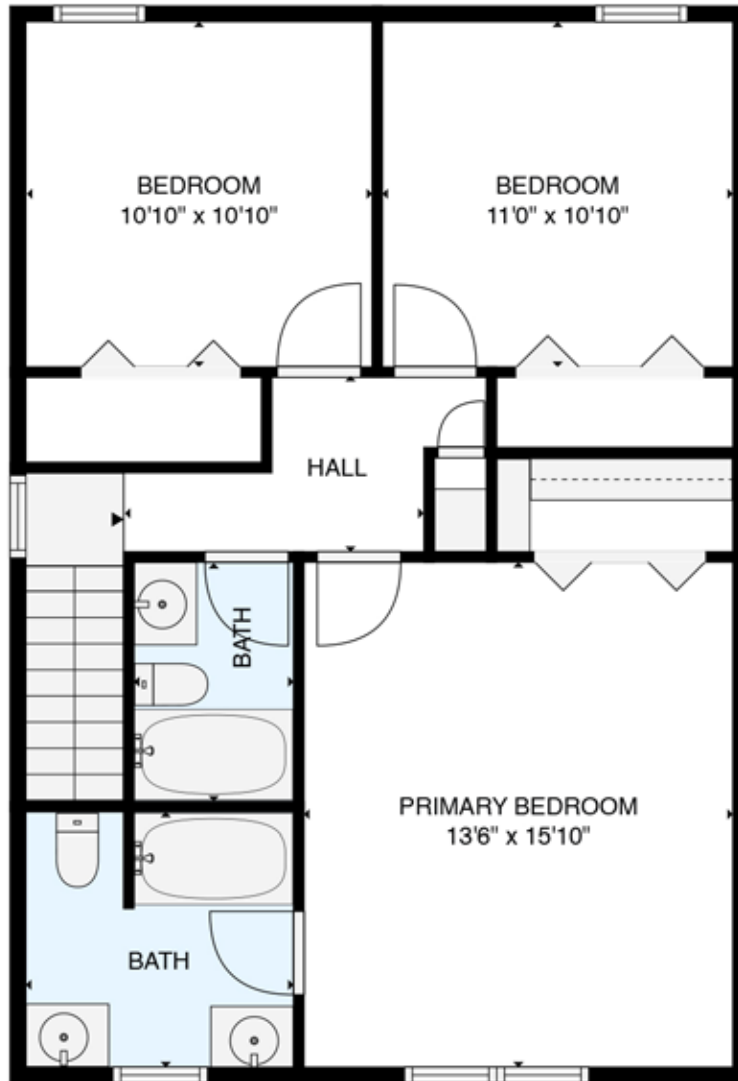
3 BEDS | 2.5 BATHS | 1,468 SF | 0.09 ACRE | MLS #4030416



FLOOR PLAN - MAIN LEVEL

723 CENTER STREET | ASHEVILLE, NC 28803

3 BEDS | 2.5 BATHS | 1,468 SF | 0.09 ACRE | MLS #4030416



FLOOR PLAN - UPPER LEVEL