



 VIRTUAL TOUR

## 138 BROOK STREET

Scenic Mars Hill Cottage with Finished Shed



**MOSAIC**  
COMMUNITY LIFESTYLE REALTY

2 BR/1 BA Main House + Finished Shed  
1,076 SF Main House • 288 SF Finished Shed • 0.34 Acre  
MLS #3650602



## INFO

138 Brook Street

Mars Hill, NC 28754

2 BR/1 BA Main House + Finished Shed

1,076 SF Main House • 288 SF Finished Shed • 0.34 Acre

MLS #3650602

## MAIN HOUSE FEATURES

- Scenic mountain setting in convenient Mars Hill location
- Walk or bike to downtown Mars Hill
- Metal roof installed 2012
- Low-maintenance vinyl siding
- Rocking-chair front porch with sunset views
- Side covered porch, great for outdoor cooking
- Easy access to home via circular driveway
- Established landscaping with herbs and perennials
- Recent plantings of skip laurel and golden euonymus shrubs along front and side of property will quickly grow into a natural privacy screen over the next few years
- Small storage shed at rear of property for lawn equipment
- Electric-powered lawn equipment conveyed
- Great flow, functional floor plan
- Efficient galley kitchen
- Connected dining and living rooms



Inviting Front Porch

- Large, light-filled living room with western views
- Electric fireplace offers additional heat and charm
- Original hardwood floors throughout home
- Charming built-ins in dining room and hallway
- Recent updates in bathroom
- Windows replaced in basement in 2012
- Pull-down attic access with extra storage
- Convenient interior access to dry and conditioned, full basement

## MAIN HOUSE FEATURES (CONTINUED)

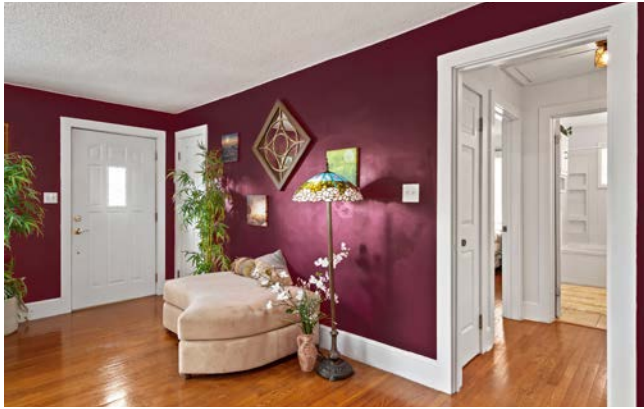
- Laundry area and flex space in 1,066 SF basement
- Quality washer and dryer convey
- 10' x 15' room in basement adds 150 SF of liveable space
- 2010 heat pump routinely maintained by Bullman Heating
- Reverse osmosis water filtration system
- Electrical upgraded to 200 amp
- Multiple cleanouts installed to septic line and one at septic tank
- Septic tank serviced/pumped 10/04/19 by Septic Man
- 15-year preventive maintenance termite treatment in 2010
- High-speed internet/cable TV available through Spectrum
- Private well

## FINISHED SHED FEATURES

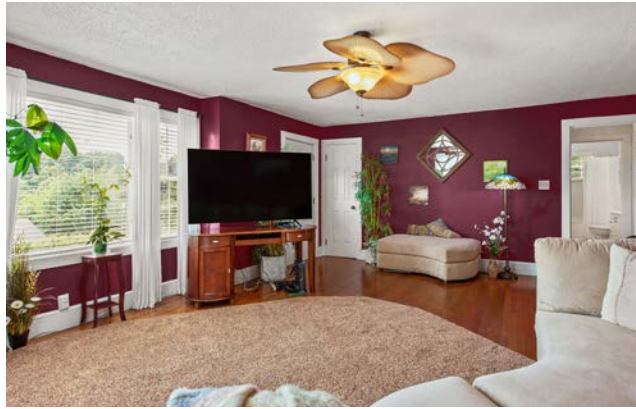
- Lovely, private setting with mountain views
- Accessed by private drive and has own parking area
- Established garden area with multiple raised beds
- Easy access to main house by landscaped walkway
- Covered patio at main entrance
- Deck at side entrance
- Light-filled design and whimsical decor
- All furnishings in photos convey
- Built-in closet and drawers in bedroom
- Stand-up shower in bathroom
- Propane tanks service stove and on-demand water heater
- Microwave and small convection oven convey
- AC window unit conveys
- Electric baseboard heater and plug-in Mr. Heater convey
- Reverse osmosis water filtration system
- Bathroom connects to main house septic system



Hey, Cutie! Side Porch of Finished Shed



Front Door Entry • Hall to Bedrooms and Bathroom



Living Room with Western Views



Electric Fireplace Adds Warmth and Charm



Shared Dining and Living Area



Kitchen Connects to Dining Area



Electric Cooktop and Microwave



Clean and Bright



Plenty of Counterspace for Food Preparation

**138 BROOK STREET**  
Scenic Mountain Cottage + Finished Shed  
Mars Hill, NC 28754



Bedroom with West and North Light



Bedroom with North and East Light



Recent Updates in Bathroom



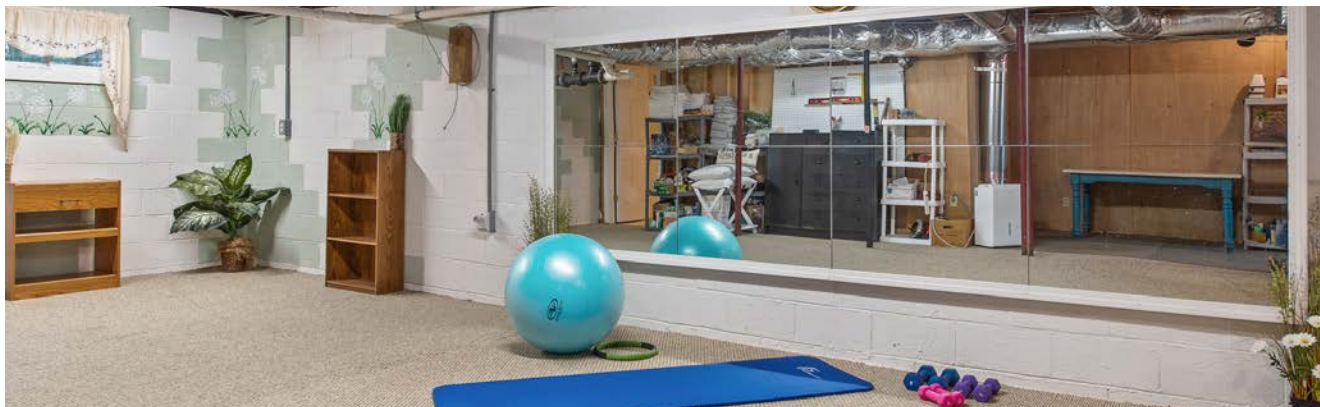
1,066 SF of Conditioned Flex Space in Basement



10' x 15' Finished Space for Office, Studio, Etc.



Laundry Area in Easy-to-Access Basement



Exercise Safely at Home in the Gym Space

**138 BROOK STREET**  
Scenic Mountain Cottage + Finished Shed  
Mars Hill, NC 28754



Covered Front Porch and Side Entry



Great Space for Socially Distanced Entertaining



Easy to Access, Easy to Love



Low-Maintenance Exterior



Scenic Mountain Setting



Established Landscaping, Perennials, and Herbs Galore



Established Path to Finished Shed from Driveway



Lots of Garden Space

**138 BROOK STREET**  
Scenic Mountain Cottage + Finished Shed  
Mars Hill, NC 28754



Side Entrance of Finished Shed



Natural Light Fills This Cleverly Designed Space



Kitchen and Living Area of Finished Shed



Electric Heat and Flat-Screen TV Convey



Bedroom with Built-ins for Clothes



Bathroom with Walk-in Shower



Yard and Covered Porch Area of Finished Shed



View of the Front of the Finished Shed

**138 BROOK STREET**  
Scenic Mountain Cottage + Finished Shed  
Mars Hill, NC 28754



Enjoy Mountain Living at 138 Brook Street

Scenic mountain home in excellent condition only 20 minutes from Asheville! Conveniently located just two miles from I-26 and less than a mile to Mars Hill University. You will delight in the sunset views from the front deck and the lovingly established landscaping. A convenient pull-around driveway circles the rear of the home. Inside features include original hardwood floors and charming built-ins with a spacious living room that connects to the dining area. A dry and conditioned full basement with interior access offers great flex space and storage. HVAC and septic have had routine professional maintenance and a metal roof was installed in 2012. There is an ADORABLE light-filled, finished shed with a charming view that could be great for personal retreat or home office. The backyard has a separate drive, additional parking area and raised bed gardens. Please see video and attached brochure for detailed features. This is a great value for a well-maintained, ready to move in home!



For more information, please contact:

**CARRIE-WELLES CRAVEN**

**828.216.8927**

**CWCRAVEN@MYMOSAICREALTY.COM**

## DIRECTIONS

From Asheville, take Future I-26. Take exit 11 to Mars Hill. Left off ramp. 1.8 miles to right turn on Brook Street. Home is on Right. GPS is accurate.