



 VIRTUAL TOUR

19 BROMPTON ROAD

Stately Elegance in The Cotswolds • Arden



MOSAIC
COMMUNITY LIFESTYLE REALTY


4 Bedrooms, 4.5 Bathrooms
4,598 SF • 0.64 Acres
MLS #3680527



INFO

19 Brompton Road
Arden, NC 28704
4 Bedrooms, 4.5 Bathrooms
4,598 Square Feet • 0.64 Acres
MLS #3680527

FEATURES

- Home is situated on a level lot within The Cotswolds, South Asheville's most desired neighborhood
 - Welcoming foyer gives a glimpse of the main level's traditional, yet airy, floor plan with gorgeous natural light in every room
 - Incredible great room has standout features, such as triple-width and clerestory windows, custom built-in shelves, a cozy gas log fireplace, gleaming wood flooring, and a 19-foot vaulted ceiling
 - Guest half bath is conveniently located adjacent to the foyer and great room
 - Spacious, light-filled dining room with elegant tray ceilings and detailed molding; adjacent to the kitchen and great room
 - Cozy, four-season sunroom and private deck, both conveniently located off of the kitchen and great room, provide easy entertaining and plentiful opportunities to watch sunsets and enjoy the lush surroundings
- 
- Back of House • Oversized, Level Lot Is Perfect for Entertaining and Furry Friends
- Chef's kitchen offers high-end finishes and fixtures throughout, including granite countertops, plentiful cabinetry, and stainless steel appliances
 - Kitchen also has a double wall oven, a five-burner gas stove, a walk-in pantry, butcher block island, and a breakfast bar with room for three
 - Comfortable main-level bedroom features a cozy fireplace and ensuite bathroom

FEATURES (CONTINUED)

- Classic central staircase offers a view of the main-level entry and great room
- Light-filled upper level holds the primary suite, two more good-sized bedrooms, and a flex room with ensuite bathroom
- Dreamy primary bedroom suite includes a spacious sitting room with fireplace, gleaming hardwoods, vaulted tray ceilings, an ensuite bathroom, and enormous walk-in closet
- Luxurious primary bathroom offers large dual vanities (one with chair cove), relaxing jetted bathtub, tiled walk-in shower, private water closet
- Upper-level laundry room features a tiled floor, a utility sink, and ample storage space
- Lower-level family room offers plenty of space to hang out; double sliding doors lead to a patio
- Lower-level multi-use room with ample storage space offers unlimited possibilities
- Lower level includes another 842 square feet, plumbed and ready for future in-law suite
- Triple-car garage offers an easy driveway and entry to main level via the kitchen
- Sidewalk-style path around home leads to each entrance



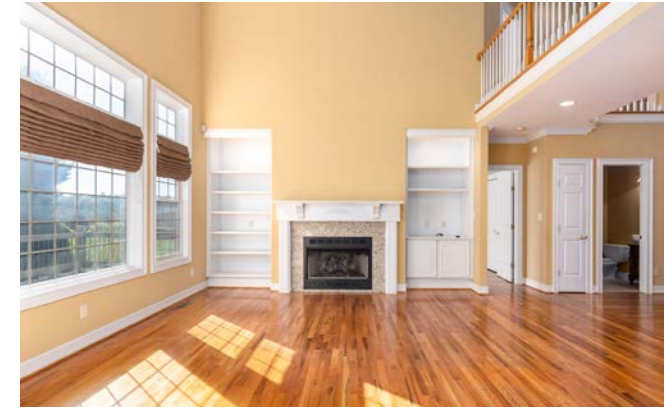
Welcoming Entry with Classic Central Staircase



Conveniently Located Half Bath Near Entrance



Magnificent Great Room with Vaulted Ceiling, Fireplace, and Gorgeous Natural Light



Custom Built-in Shelves Flank the Cozy Fireplace



Oak Flooring, Staircase Treads, and Banisters



Light-Filled Dining Room with Elegant Tray Ceiling



Adjacent to Kitchen, Great Room, and Foyer



Flex Room Is Perfect for an Office or Study



Chef's Kitchen with 5-Burner Gas Stove, Stainless Steel Appliances, Butcher Block Island, and 3-Seat Breakfast Bar



Quality, Glass-Front Cabinetry • Double Wall Oven



Elegant, Durable Granite Countertops



Walk-in Pantry and Plentiful Storage Space



Easy Main-Level Entry from the Garage via the Kitchen



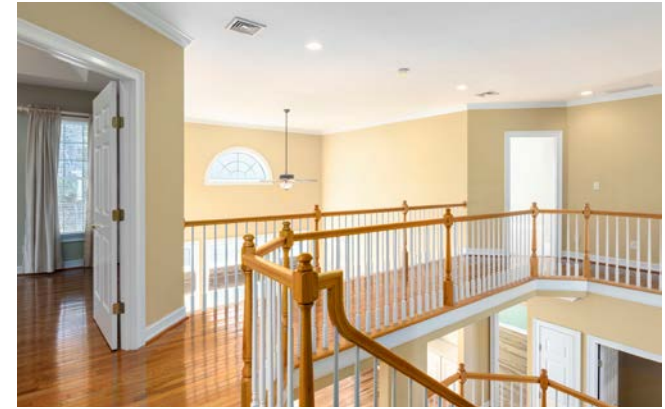
Cozy, 4-Season Sunroom Right off the Kitchen



Comfortable, Main-Level Suite with Cozy Fireplace



Ensuite Bathroom with Shower/Tub Combo



Light-Filled Upper-Level Landing



Primary Suite Has a Sunny Sitting Area with Fireplace



Gleaming Hardwoods and Vaulted Tray Ceiling



You Couldn't Imagine a Better Walk-in Closet!



Luxurious Ensuite Bathroom with Dual Vanities



Jetted Bathtub and Tiled Walk-in Shower



Upper-Level Laundry Room has Tile and Utility Sink



Upper-Level Bedroom with Jack-and-Jill Bathroom



Second Upper-Level Bedroom with Jack-and-Jill Bathroom



Jack-and-Jill Bathroom with a Vanity at Each Entrance



Upper-Level Flex Room



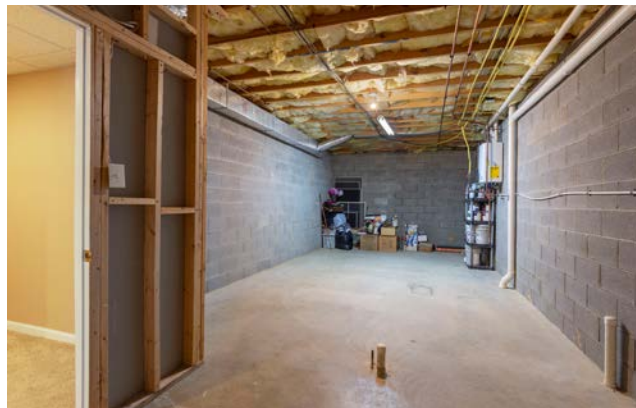
Flex Room's Full Bathroom



Lower-Level Multi-Use Room Provides Endless Options



Outside Entrance, Patio Access • Tons of Storage Space



Another 842 SF, Plumbed and Ready for Future Expansion



Triple-Car Garage with Easy Driveway



MOSAIC
COMMUNITY LIFESTYLE REALTY

60 Biltmore Avenue, Asheville, NC 28801 tel : 828.707.9556 fax: 800.553.1491

WWW.MYMOSAICREALTY.COM



Level Lot with Paved Path to Each Entrance around Home



Watch the Sunset • Enjoy the Mature Landscaping



Enjoy Entertaining on the Private Patio



Perfect Yard for Gardening or Play



Plenty of Parking and Three-Car Garage

19 BROMPTON ROAD
Stately Elegance in The Cotswolds



Welcome to The Cotswolds, South Asheville's Most-Desired Neighborhood

Come see this rare listing in The Cotswolds, a beautiful setting where people of all ages enjoy both seclusion and convenience. Sprawling lawns, mature trees, quiet streets and traditional, well-kept houses are hallmarks of this popular neighborhood. This home has it all! Sunny, airy floor plan with oak flooring on the main level and in the cozy four-season sunroom. Stunning great room loaded with custom features – a soaring vaulted ceiling, intricate trim, built-in bookshelves flanking the gas log fireplace, and triple-width and clerestory windows. Chef's kitchen with abundant cabinets, granite counters, breakfast bar, double ovens, and gas range. Huge primary suite with fireplace; three more bedrooms with ensuite bathrooms including a main-level guest room with full bath. Plenty of extra rooms for office, media, rec, hobbies, etc. Three-car garage, an easy driveway, and a level corner lot. Highly ranked schools and desirable South Asheville location make this a wonderful investment.



For more information, please contact:

LEANN BOUND

828.713.2316

LEANN@MYMOSAICREALTY.COM

DIRECTIONS

From Asheville: Take 25 South. Left on Mills Gap Road. Travel 3 miles. Turn left on Brompton into The Cotswolds. Take first right on Portobello. Home is first on the right.