



170 BENNETT ROAD

Contemporary Home with Stunning Views • Candler



MOSAIC
COMMUNITY LIFESTYLE REALTY

3 Bedrooms, 2.5 Bathrooms
3,074 SF • 1.26 Acres
MLS #3723007



INFO

170 Bennett Road, Candler, NC 28715
3 Bedrooms, 2.5 Bathrooms
3,074 Square Feet, 1.26 Acres
MLS #3723007

FEATURES

- Stunning contemporary home with amazing, triple-layer mountain views that include Mount Pisgah with close-range, pastoral creek views of South Hominy Creek
- Spacious, private yard features gorgeous flowering trees and terracing for the garden enthusiast
- Great potential for vacation rental with abundant privacy and only 20 minutes to downtown Asheville
- Lots of outdoor living with two main-level, covered decks and lower-level flagstone patio
- Beautiful cedar and stone veneer exterior siding, new metal roof (2020), and fresh interior paint
- Main-level entry from one of two driveways that lead to the home
- Updated chef's kitchen features granite countertops, custom tile backsplash, an island, and plenty of cabinet and counter space
- Bright living room with mountain views through oversized picture windows, a cathedral ceiling, a stone-surround gas fireplace, and deck access
- Main-level primary suite features amazing mountain views, vaulted ceiling, private deck access, built-in entertainment nook, walk-in closet, and ensuite bathroom that includes two granite vanities with 'sit on top' mounted stone bowls, jacuzzi soaking tub, walk-in shower, and a linen closet



Main-Level Entry from One of Two Driveways that Lead to the Home

- Bonus loft with vaulted ceiling and views overlooks living room; perfect for guests
- Closet at entry and powder room on the main level
- Finished basement with separate entrance features a spacious second living room, two bedrooms, a full bathroom, and laundry closet with utility sink
- Gorgeous wood-paneled ceiling in finished basement
- Oversized two-car garage and utility room for extra storage
- Giant, standalone storage shed – perfect for workshop or artist studio – and second shed for tool and toy storage



Covered Front Porch, Ready for Relaxing



Perfect Spot for Morning Tea



Beautiful Hardwood Floors, Vaulted Ceiling at Entry



Dining Area off of Kitchen has Space for a Large Table



Inviting Entry from the Back Deck with Views



Updated Chef's Kitchen Features Island/Breakfast Bar



Custom Tile Backsplash and Lots of Room for Storage



Ample Cabinet and Counter Space



Long-Range Mountain Views from the Kitchen



Kitchen Island with Gas Range and Attractive Hood



Cathedral Ceiling, Gas Fireplace, and Deck Access



Mountain Views through Oversized Picture Windows



Powder Room on Main Level



Loft Overlooks Living Room



Bonus Loft with Vaulted Ceiling Perfect for Guests



Spacious Primary Bedroom Suite



Primary Suite • Vaulted Ceiling, Private Deck Access



Built-in Entertainment Nook



Ensuite Bathroom with Jacuzzi Soaking Tub



Walk-in Closet with Custom Shelving/Organization



Spectacular Views from Covered Deck off Primary Suite



Large Basement Living Room with Patio Access



Basement Bedroom with Beadboard Ceiling



Second Bedroom in Basement



Full Bathroom in Basement with Beautiful Details



Amazing Views from the Covered Back Deck



Al Fresco Dining Awaits



Two-Car Attached Garage and a Giant Shed



Giant Shed Is Perfect for Workshop or Artist Studio



Second Shed for Tool and Toy Storage



Spacious Yard with Terracing for the Garden Enthusiast



Mount Pisgah and South Hominy Creek



Triple-Layer Mountain Views Include Mount Pisgah



Tranquil Estate, Close to Asheville, with Plenty of Room to Plant and Play

Contemporary home in Candler offers stunning views of Mount Pisgah and surrounding pastoral landscape, including South Hominy Creek. Privacy abounds on this large lot, ideal for vacation rental, only 20 minutes to downtown Asheville. Gardener's paradise with terraced yard and a multitude of mature and flowering trees. Lots of outdoor living with two covered decks and a lower-level flagstone patio, perfect for gathering with family and friends. Highlights of the home include beautiful cedar and stone veneer siding, a new metal roof (2020), fresh interior paint, an updated kitchen, and a main-level primary suite. Bright living room with soaring cathedral ceiling and large windows framing spectacular mountain views. Bonus loft perched above the living room with vaulted ceiling. Two bedrooms, one full bathroom, and laundry closet in the finished basement with a separate entrance. Plenty of extra storage, workshop or artist studio space with two-car attached garage, and two standalone sheds.



For more information, please contact:

MIKE FIGURA

828.337.8190

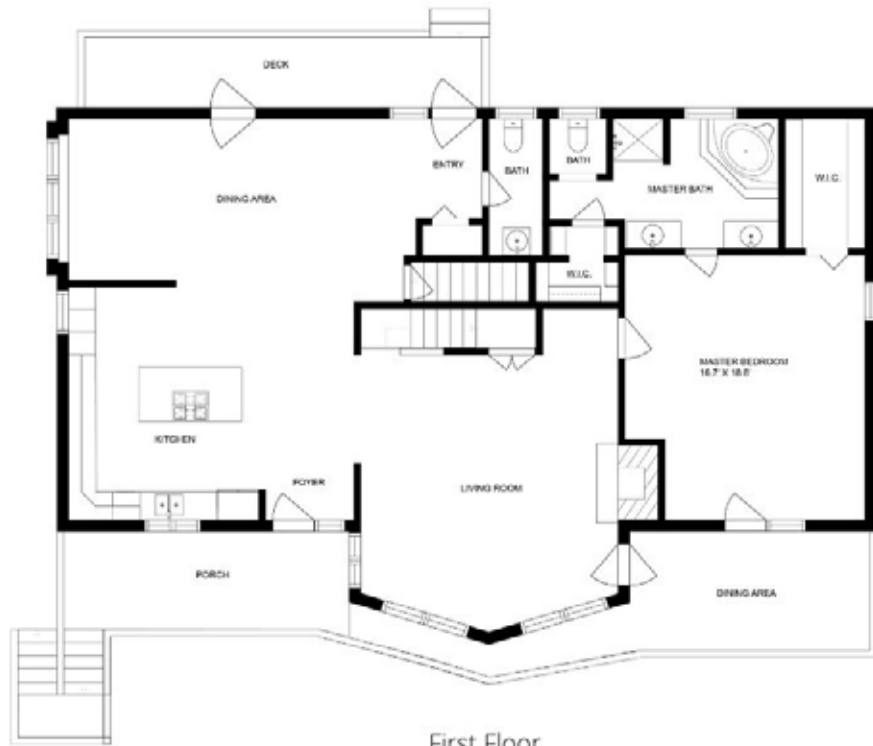
MIKE@MYMOSAICREALTY.COM

DIRECTIONS

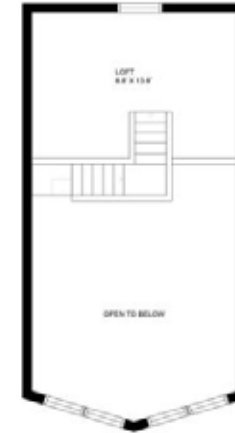
From downtown Asheville, take I-40 West to Exit 44. Turn right onto Smokey Park Highway. Turn left onto Sand Hill Road, then right onto Enka Lake Road. In 2.5 miles, veer right/straight onto Bennett Road. House is on the left. Sign at the driveway entrance and in the yard.



170 Bennett Rd



First Floor
1830.26 sf



Second Floor
124.08 sf



Finished Basement
1120.86 sf

Heated Living Space
 First Floor - 1830.26 sf
 Second Floor - 124.08 sf
 Finished Basement - 1120.86 sf
Total - 3075 sf (rounded)