



 VIRTUAL TOUR

16 BALLANTREE DRIVE

Beautiful Ranch Home in Desirable Ballantree Neighborhood



MOSAIC
COMMUNITY LIFESTYLE REALTY

5 Bedrooms, 3 Bathrooms
3,267 SF • 0.54 Acre
MLS #4030631

INFO

16 Ballantree Drive
Asheville, NC 28803
5 Bedrooms, 3 Bathrooms
3,267 SF • 0.54 Acre
MLS #4030631

FEATURES

- Lovingly maintained ranch home in highly desirable Ballantree neighborhood
- Nestled in the mountain cove of South Asheville, this home boasts more than 3,000 square feet of living space and sits on a spacious corner lot across from the neighborhood park
- Enjoy quiet strolls along meandering streets among friendly folk
- Close to many South Asheville amenities, Biltmore Village, Asheville Regional Airport and minutes to downtown Asheville
- Recent renovations include new engineered hardwood flooring on the main level, new carpet, new fireplace, updated fixtures/hardware, fresh interior paint, and new backyard box-drain for water mitigation
- Inviting entry with coat/hat and sitting-bench storage
- Spacious living room with shiplap-surround gas fireplace and backyard access
- Chef's kitchen features granite countertops, tile backsplash, a breakfast bar, and a gas stove
- Bright dining room with oversized picture window and space for large table



Relax and Unwind on the Inviting Covered Front Patio

- Den/sitting/playroom off of kitchen
- Three bedrooms, two full bathrooms on the main level; includes the primary suite with two closets and ensuite bathroom
- Large main-level bedrooms with cozy carpet
- Second full bathroom with a double vanity and tiled, walk-in shower
- Laundry/mudroom with utility sink and extra storage closet
- Finished basement with exterior entrance features a second living room, two bedrooms, a full bathroom with walk-in shower, and tons of extra storage space
- Two-car garage with more great storage and plenty of parking



Inviting Entry with Sitting Bench and Garment Storage



Wonderfully Renovated, Open Living and Dining



Living Room with Shiplap-Surround Gas Fireplace



Spacious-Yet-Cozy Living Area



Space for Relaxing and Entertaining



Easy Dining Access Near Main Entrance



Light-Filled Dining Room with Space for Large Table



Easily Accessible Dining and Main-Level Flow



Sitting Room off of the Kitchen



Chef's Kitchen • Granite Countertops and Tile Backsplash



Great Flow through the Home



Gorgeous Style and Finishes



Extended Counter with Breakfast Bar



Yard Access through Sliding Glass Doors



Built-in Extra Storage and Breakfast Space



Laundry/Mudroom with Pantry



Large Primary Suite



Ensuite Full Bathroom



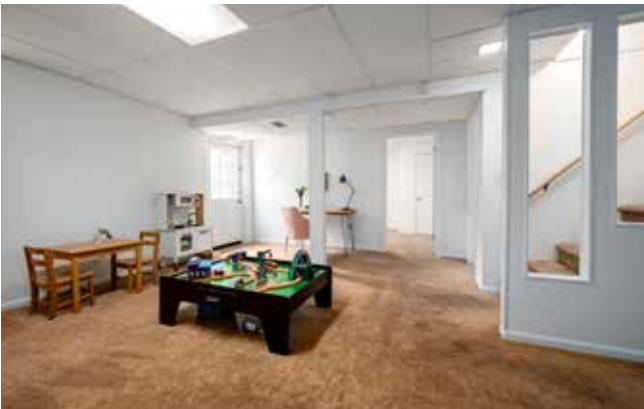
Bedroom with New Carpet



Bright Third Bedroom on Main Level



Second Full Bathroom on Main Level



Exterior Entrance from Finished Basement



Playroom or Second Living Room in Basement



Bedroom with Walk-in Closet



Another Basement Bedroom



Full Bathroom with Walk-in Shower



Bonus Room in Basement



Surrounding Mountains Peek Through



Mature Shade Trees Help Beat the Summer Heat



Backyard Access from the Rear of the Home



Tons of Storage Space



Exterior Stairs Lead to Finished Basement



Plenty of Parking Includes a Two-Car Garage



Neighborhood Park Across the Street



Lovely Area to Unwind



Lots of Room to Play



Covered Front Porch



Spacious Corner Lot

16 BALLANTREE DRIVE

Beautiful Ranch Home in Ballantree

Asheville, NC 28803



Stately Home

Gorgeous ranch home in highly desirable Ballantree neighborhood, boasting more than 3,000 SF of living space. Nestled in the mountain cove of South Asheville, this stately home sits on a spacious corner lot close to many South Asheville amenities: Biltmore Village, Asheville Regional Airport, and only minutes to downtown Asheville. Recent renovations include new engineered hardwood flooring on the main level, new carpet/trim, updated fixtures/hardware, fresh interior paint, and new backyard box-drain for water mitigation. Entertain family and friends from the chef's kitchen, bright living room with new shiplap-surround gas fireplace, and statement dining room. Three bedrooms and two full bathrooms on the main level include the spacious primary suite. Walk-out, finished basement with lots of possibilities, two additional bedrooms, and tons of extra storage space. Two-car garage with more great storage and plenty of parking. See video for more detail.



VIRTUAL
TOUR



For more information, please contact:

WILSON HOOD

828.545.0551

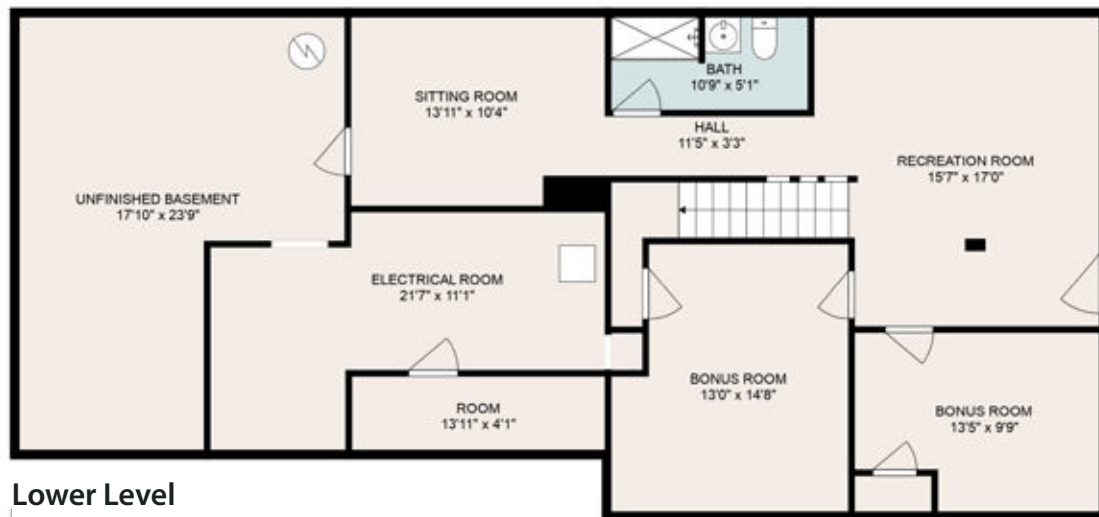
WILSON@MYMOSAICREALTY.COM

DIRECTIONS

FROM ASHEVILLE: Take Biltmore Avenue south to Biltmore Village. Turn left onto Sweeten Creek Road. Turn left onto Ballantree Drive. 16 Ballantree Drive is on the left. Sign in the yard.



Main Level



Lower Level

FLOOR PLANS