



27 YARROW MEADOW ROAD

Brand New Energy Star Certified Home Close to Downtown Weaverville



MOSAIC
COMMUNITY LIFESTYLE REALTY

3 Bedrooms, 2.5 Bathrooms
1,586 Square Feet • 0.10 Acres
MLS #3577336

INFO

27 Yarrow Meadow Road, Weaverville, NC 28787

3 Bedrooms, 2.5 Bathrooms

1,586 Square Feet, 0.10 Acres

MLS #3577336

FEATURES

- Brand-new Energy Star-certified home close to downtown Weaverville
- Planned development with mountain views
- Walk or bike to Main Street district shopping and dining
- Open floor plan connects kitchen with dining/living room
- Beautiful hardwood floors
- Sparkling kitchen with granite countertops and stainless appliances
- Back deck overlooks green space for privacy
- Large windows throughout for great natural light
- Three bedrooms and two full bathrooms on second level
- Master bedroom with ensuite full bathroom
- Bedrooms wired for cable and internet
- Washer/dryer closet on second level
- Coat closet at entry
- Extra storage space on both levels of the home
- Covered front porch is perfect for relaxing
- Professionally landscaped yard
- Low-maintenance exterior



Back Deck Overlooks Green Space



Sparkling Kitchen with Granite Countertops & Stainless Appliances



Coat Closet at Entrance



Beautiful Hardwood Floors



Spacious Dining Area



Dining Room with Access to Back Deck Off of Kitchen



Stainless Steel Appliances • Tons of Storage



Shakers Cabinets and Modern Fixtures



Granite Counters



Kitchen Leads Directly into Dining Room Area



Power Room on Main Level



Linen Closet Off Powder Room



Master Bedroom on Second Floor



Plenty of Light and Large Windows



Master Bedroom has Ensuite Bathroom



Master Bathroom



Bedroom #2



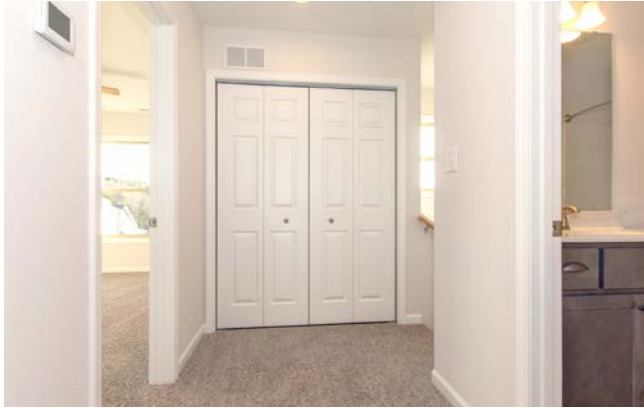
Bedroom #3



Bedrooms Have Ceiling Fans and New Carpet



Spacious Closets In Bedrooms



Laundry Closet on Second Level



Shared Full Bath On Second Level



Great Back Deck for Entertaining

27 YARROW MEADOW ROAD

Brand-new Energy Star-certified home close to downtown Weaverville. Planned development with mountain views. Walk or bike to Main Street district shopping and dining or to beautiful Lake Louise. Easy interstate access and 10 minutes to downtown Asheville. Beautiful hardwood floors. Large windows for great natural light. Sparkling kitchen with granite countertops and stainless appliances opens to dining/living area. Three bedrooms and two full bathrooms on second level. Master bedroom with ensuite full bathroom. Bedrooms pre-wired for cable and internet. Deck off of the kitchen is perfect for entertaining. Covered front porch looks out over professionally landscaped yard.



For more information, please contact:

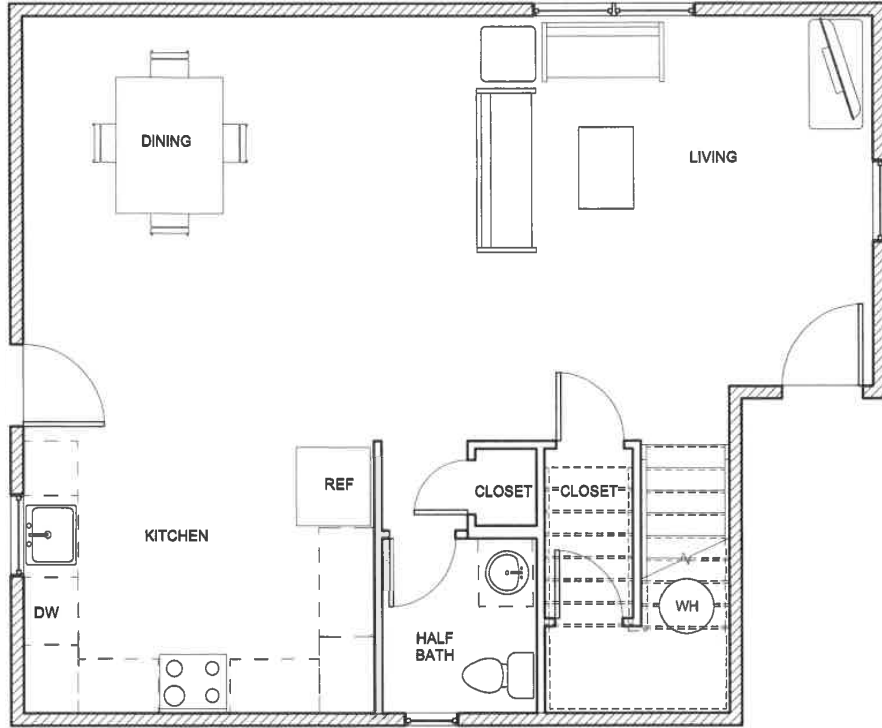
ANTHONY THOMAS

828.582.5865

ANTHONY@MYMOSAICREALTY.COM

DIRECTIONS

From downtown, take I-26W/US-19 N/US-23 N for 8.5 miles to exit 19 (Weaver Blvd) toward Weaverville. Turn left onto N. Main Street. In 0.3 miles, turn right onto Critter Trail. Turn left onto Lillie Farm Lane. Turn left on Yarrow Meadow Road. Home is on the right. Sign in yard.



FIRST FLOOR PLAN



SECOND FLOOR PLAN