



70 MADELINE AVENUE

Like-New Arts & Crafts Home in Malvern Hills



MOSAIC
COMMUNITY LIFESTYLE REALTY

5 Bedrooms, 3.5 Bathrooms
2,504 Square Feet • 0.11 Acre
MLS #3609211



INFO

70 Madeline Avenue, Asheville, NC 28806

5 Bedrooms, 3.5 Bathrooms

2,504 Square Feet

(848 SF Main Floor, 848 SF Second Floor, 808 SF Daylight Basement)

0.11 Acre • MLS #3609211

FEATURES

- Like-new Arts and Crafts home in Malvern Hills on a quiet, dead-end street
- Located in an established neighborhood close to Malvern Hills Pool/Park
- Walk or bike to Haywood Road; minutes to downtown Asheville shopping and dining
- Open, flowing floor plan with master on main
- Hardwood and tile floors on main and second levels; beautiful polished concrete floors in daylight basement
- Oversized windows for great natural light
- Spacious covered front porch with beautiful tongue-and-groove ceiling that wraps around to a sunny side deck perfect for al fresco dining
- Inviting entry with 9-foot ceiling and coat closet
- Powder room on main level and extra storage under the basement stairs
- Gourmet kitchen features granite counter tops, stainless steel appliances, counter-depth fridge, dovetail cabinets, and oil-rubbed bronze fixtures



Great Curb Appeal

- Breakfast bar opens to dining area with french door access to oversized, sunny side deck
- Main-level master bedroom features a walk-in closet and a full bathroom
- Master bath includes a granite double vanity, large linen closet and a tiled walk-in shower
- Upstairs landing with built-in storage bench gets great natural light
- Three upstairs bedrooms, one with a loft, and one full bathroom on second level that includes a granite dual vanity
- Jack and Jill closet connect two upstairs bedrooms
- Vaulted ceilings in upstairs bedrooms
- Finished basement with separate entrance features one bedroom, one full bathroom, and a bright living room, perfect for entertaining

FEATURES (CONTINUED)

- Basement perfect for in-laws or homestay (subject to COA permit)
- Laundry room in basement with wall-mounted storage shelves
- Large under-deck storage shed for toy/tool/lawn equipment storage
- Excellent outdoor living with a fenced yard, stone fire pit and playground — perfect for furry friends and play
- Decorative stones highlight the professionally landscaped yard
- Low-maintenance exterior with HardieBoard® siding and 30-year architectural shingle roof
- Superior Wall® foundation for excellent waterproofing and insulation
- High-efficiency HVAC system, Energy Star windows and LED lighting for low energy use
- Wired to work from home with ethernet cable routed to all three floors and high speed internet
- Basement is wired for surround sound
- Large utility/storage closet in basement



Virtual walkthrough: <http://tiny.cc/70Madeline>
Also, LIVE virtual walkthroughs are available on request!



Stately Home on a Gently Sloped Lot



Covered Front Porch with Beautiful Tongue-and-Groove Ceiling



Inviting Entry



French Doors in Dining Area Open to Sunny Side Deck



Breakfast Bar Connects Kitchen with Dining Area



Gourmet Kitchen Features Granite Counter Tops



Ample Counter and Cabinet Space • Stainless Appliances



Neighborhood Views from Kitchen



Master Bedroom with Ceiling Fan and Clerestory Windows



Ensuite Full Bathroom Features Granite Dual Vanity



Tiled Walk-in Master Shower



Powder Room on Main Level



Gorgeous Hardwood Floors and Stairs



Bright Second-Level Landing with Storage Bench



Tall Ceilings on Second Level



First Upstairs Bedroom



Jack-and-Jill Walk-in Closet Connects Bedrooms 2 and 3



Built-in Loft Bed and Ladder



Third Upstairs Bedroom with Vaulted Ceiling

70 MADELINE AVENUE
Like-New Arts & Crafts Home in Malvern Hills
Asheville, NC 28806



Full Bathroom on Second Level



Shower/Tub Combo in Second Level Bathroom



Living Room in Basement with Separate Exterior Entrance



Space to Entertain



Extra Storage Under Basement Stairs (Harry Potter Closet!)



Bedroom in Basement Gets Great Natural Light



Third Full Bathroom in Basement



Laundry Room in Basement with Storage Shelves



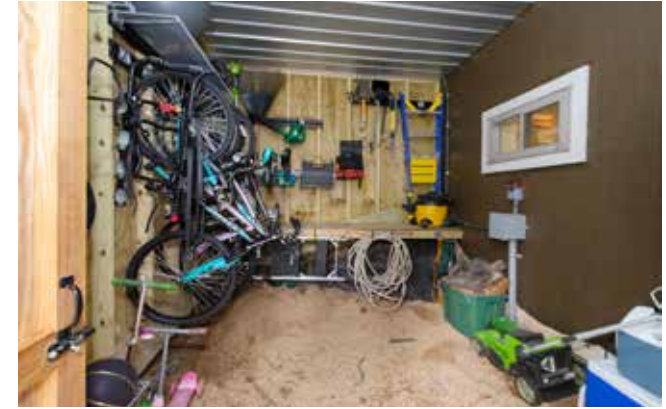
Lots of Extra Storage in Basement Utility Room



Fully Fenced Back/Side Yard Is Ready for Furry Friends



Covered Patio and Shed Storage Under Deck



Large Storage Closet Under Deck



Sunny Side Deck, Perfect for Al Fresco Dining



Pass-Through Window Connects Side Deck with Kitchen



Stone Firepit in Back Yard



For more information, please contact:

MIKE FIGURA

828.337.8190

MIKE@MYMOSAICREALTY.COM

DIRECTIONS

From downtown, take I-240 West toward I-40. Take exit 2 toward West Asheville. Turn right onto Haywood Road. After 0.9 mile, take a slight left onto Lanvale Avenue, and an immediate right onto Sulphur Springs Road. Continue for about 1 mile, and then turn left onto Madeline Avenue. 70 Madeline is on the left. Sign in the yard.