



45 HIGH TOP MOUNTAIN ROAD

Spacious Home in a Private Setting • Leicester



MOSAIC
COMMUNITY LIFESTYLE REALTY

3 Bedroom, 2.5 Bathroom
3,043 Square Feet • 3.24 Acres
MLS #3615354



INFO

45 High Top Mountain Road, Leicester, NC 28748

3 Bedroom, 2.5 Bathroom

3,043 Square Feet • 3.24 Acres

MLS #3615354

FEATURES

- Spacious home in private setting only 10 miles from Asheville
- Split floor plan with bedrooms and bathrooms on main level
- Vaulted ceilings and oversized windows provide great views and natural light
- Living room has wood-burning fireplace with stone hearth
- Stunning dining room with staggered tray ceiling, arched windows and classic chandelier
- Functional, spacious kitchen has ample cabinetry, granite countertops and Frigidaire appliances including a wall oven, cooktop stove, refrigerator, and microwave
- Breakfast nook bathed in sunlight through bay windows
- Master bedroom has vaulted ceilings, many large windows, recessed lighting, and an ensuite bathroom with a jacuzzi tub, tiled shower, dual vanity sinks, walk-in closets, and private toilet
- Jack and Jill bathrooms have personal sinks with tub/shower combo
- Office off entry and living room
- Wonderful sunroom with high ceilings, ceiling fan/light, and oversized windows that open for fresh air



Lovely home

- Bonus room in basement with high ceilings, recessed lighting, and sliding door to backyard
- Extra storage room in basement
- Two-car garage has workshop space and a loft with three storage bays
- Additional parking on the concrete pad at top of the driveway or gravel pad at the shed
- Rear deck perfect for grilling, chilling, and soaking in the hot tub
- Country style shed built on a slab is complete with wrap around porch, half bath, and electricity
- Partially fenced-in yard for pets
- Gardener's paradise with thoughtful design and detailed landscaping
- House is equipped with a water softener system, leaf gutter guards, radon mitigation system, and alarm system
- Hot tub and washer/dryer will convey

[CLICK HERE FOR VIRTUAL WALKTHROUGH](#)



Wood Floors in Main Living Area



High Ceilings and Thoughtful Lighting



Living Room with Wood-Burning Fireplace



Stunning Dining Room



Functional, Spacious Kitchen



Bright and Sunny



Sweet Breakfast Nook



Office on Main Floor



Half Bath on Main



Light and Bright Master Bedroom



Walk-in Shower in Master Bath



Jacuzzi Tub and Dual Vanity



Cozy Guest Bedroom



Bedrooms Have High Ceilings



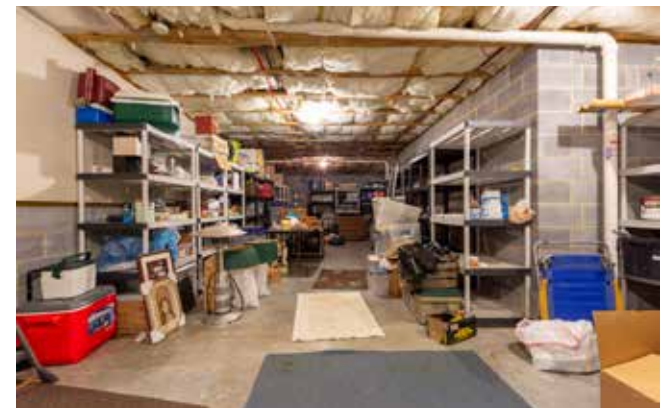
Jack-and-Jill Bathroom



Personal Sinks for Each Bedroom



Finished Basement Bonus Room with Private Deck



Ample Storage in Basement



Country Road Takes You Home



Concrete Pad and Two-Car Garage



Great Birdwatching from the Sunroom



Relax in the Hot Tub



Amazing Yard and Gardens



Adorable, Handy Shed



Wrap Around Porch on the Shed



Parking Behind the Shed



Bathroom and Electricity in Shed on Slab



Come see this dream home in a private, mountain setting with gorgeous gardens and more than 3,000 SF of light-filled living space on 3.24 acres! Living room features a wood-burning fireplace with stone hearth. Tray ceilings and arched windows create a stunning dining room. Office with french doors off entry. Central kitchen has ample cabinetry, granite counters, Frigidaire appliances and sunny, eat-in nook. The lovely sunroom is perfect for birdwatching. Master bedroom has vaulted ceilings, large windows, a walk-in closet and bathroom with a jacuzzi tub, walk-in shower, private toilet, and dual vanity. Two bedrooms share a Jack-and-Jill bathroom. Large family room in the basement has high ceilings, recessed lighting, and a door to the backyard. Country-style shed on slab has a wraparound porch, half bath and electricity. Rear deck with a hot tub is perfect for grilling and chilling. Extra features include a water softener system, radon mitigation system, alarm system, and leaf gutter guards.

[CLICK HERE FOR VIRTUAL WALKTHROUGH](#)

LIVE virtual walkthroughs are available on request!



For more information, please contact:

STACEY ENOS

828.712.2069

STACEY@MYMOSAICREALTY.COM

DIRECTIONS

New Leicester Hwy to left on Newfound Road. Quick left turn onto Dix Creek One Road. Follow for 2.3 miles. Turn left on High Top Mountain Road. Stay straight at the fork in the road and 45 High Top Mountain Road will be the first driveway on the left.