



25 YARROW MEADOW ROAD

Brand-New Energy Star-Certified Home Close to Downtown Weaverville



MOSAIC
COMMUNITY LIFESTYLE REALTY

3 Bedrooms, 2.5 Bathrooms
1,701 Square Feet • 0.12 Acres
MLS #3577375

INFO

25 Yarrow Meadow Road, Weaverville, NC 28787

3 Bedrooms, 2.5 Bathrooms

1,701 Square Feet • 0.12 Acres

MLS #3577375

FEATURES

- Brand-new Energy Star-certified home close to downtown Weaverville
- Planned development with mountain views
- Walk or bike to Main Street district shopping and dining
- Open floor plan connects kitchen with dining/living room
- Beautiful hardwood floors throughout the main level
- Sparkling kitchen with granite countertops and stainless appliances
- Small porch off of the kitchen leads to level yard
- Large windows throughout for great natural light
- Master bedroom on main level with ensuite bathroom
- Two bedrooms on second level with shared full bathroom
- Bedrooms already wired for cable and internet
- Washer/dryer closet on second level
- Coat closet at entry
- Extra storage space on both levels of the home
- Covered front porch is perfect for relaxing
- Professionally landscaped yard
- Low-maintenance exterior



Two-Level Living in Western North Carolina



Spacious Front Porch for Relaxing



Beautiful Hardwood Floors



Spacious Living Room Area



Tons of Space for Relaxing



Dining Area



Open Floor Plan



Coat Closet at Entry



Kitchen Is Light and Bright • Door to Back Yard



Stainless Steel Appliances • Tons of Storage



Kitchens Leads Directly into Dining Room Area



Kitchen Pantry with Plenty of Storage



Granite Counters



Powder Room on Main Floor



Master Bedroom on Main Level



Bedrooms #2 and #3 on Second Level



Bedroom #2 on Second Level



Plenty Of Light And Large Windows



All Rooms Have Ceiling Fans

25 YARROW MEADOW

Brand New Energy Star Certified Home

25 Yarrow Meadow Road
Weaverville, NC 28787



Bedroom #3



New Carpet in All Bedrooms



Laundry Closet on Upper Level



Shared Full Bath on Second Level



Brand-New Energy Star-Certified Home



Planned Community Close to Downtown Weaverville



Solid Home with Low-Maintenance Exterior



Back Porch Overlooks Green Space

25 YARROW MEADOW

Brand-New Energy Star-Certified Home

25 Yarrow Meadow Road
Weaverville, NC 28787



MOSAIC
COMMUNITY LIFESTYLE REALTY

60 Biltmore Avenue, Asheville, NC 28801 tel : 828.707.9556 fax: 800.553.1491

WWW.MYMOSAICREALTY.COM



Brand-new Energy Star-certified home close to downtown Weaverville. Planned development with mountain views. Walk or bike to Main Street district shopping and dining, or stroll over to beautiful Lake Louise. Easy interstate access and 10 minutes to downtown Asheville. Beautiful hardwood floors throughout main level. Large windows for great natural light. Sparkling kitchen with granite and stainless steel opens to dining/living area. Master bedroom on main level with ensuite full bathroom. Two bedrooms and one full bathroom on second level. Bedrooms wired for cable and internet. Small deck off of the kitchen leads to level yard. Covered front porch looks out over professionally landscaped yard.



For more information, please contact:

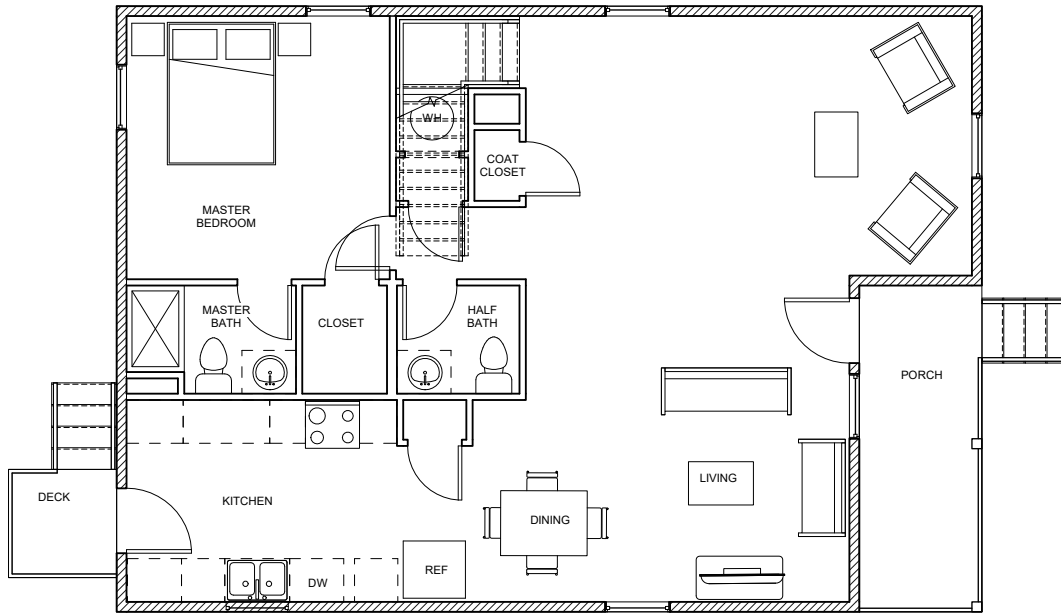
ANTHONY THOMAS

828.582.5865

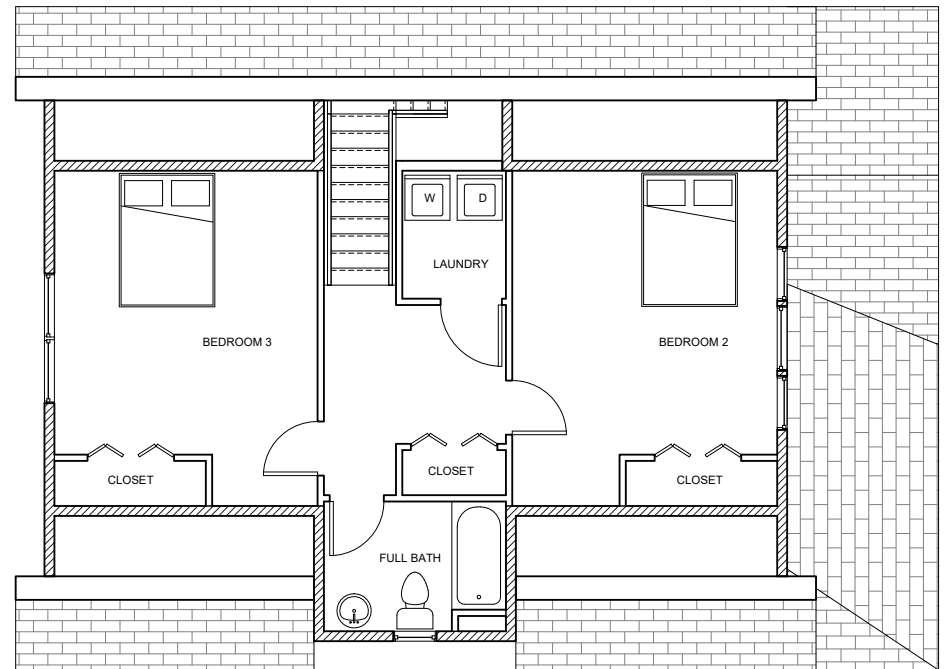
ANTHONY@MYMOSAICREALTY.COM

DIRECTIONS

From downtown, take I-26W/US-19 N/US-23 N for 8.5 miles to exit 19 (Weaver Blvd) toward Weaverville. Turn left onto N. Main Street. In 0.3 miles, turn right onto Critter Trail. Turn left onto Lillie Farm Lane. Turn left on Yarrow Meadow Road. Home is on the right. Sign in yard.



FIRST FLOOR PLAN



SECOND FLOOR PLAN