



250 OLD HAW CREEK ROAD

GreenBuilt Arts & Crafts Home by JAG Construction • Haw Creek



MOSAIC
COMMUNITY LIFESTYLE REALTY

3 Bedrooms, 2.5 Bathrooms
1,714 SF • 0.24 Acre Lot
MLS #3623978



INFO

250 Old Haw Creek Road, Asheville, NC 28805

3 Bedrooms, 2.5 Bathrooms

1,714 Square Feet • 0.24 Acres

MLS #3623978

FEATURES

- Brand new Arts and Crafts GreenBuilt and Energy Star home by JAG Construction
- Located in established Haw Creek neighborhood in East Asheville
- Five minutes to downtown Asheville and close to Penny Cup Coffee, Creekside Tavern and the East Asheville Library
- Open, flowing floor plan with master on main
- Oversized windows for great natural light
- Outdoor living with a covered, wrap-around front porch with beautiful tongue-and-groove ceiling and a spacious back deck
- Hardwood and tile floor throughout
- Inviting entry with 9-foot ceiling and coat closet
- Powder room on main level and extra storage under the stairs
- Modern kitchen features granite countertops, stainless steel appliances, tile backsplash, dove-tail cabinets, modern fixtures and a pantry for extra storage
- Breakfast bar opens to dining room
- Bright living room perfect for entertaining



Wrap-Around Porch with Beautiful Tongue-and-Groove Ceiling

- Main level master bedroom features a walk-in closet and full bathroom
- Master bath includes double granite vanity, tiled walk-in shower and modern fixtures
- Upstairs landing gets great natural light
- Two bedrooms and one full bathroom on second level
- Second level full bathroom has a granite countertop and tiled shower
- Large decorative stones highlight the partially fenced yard



GREEN FEATURES

- GreenBuilt NC and Energy Star Certified
- Formaldehyde-free insulation in walls and 6” of spray foam insulation in the ceilings and bands
- Air sealed
- No-VOC paints and adhesives
- Energy Star windows, appliances and lighting
- Multitude of windows for lots of natural light (daylighting)
- Fresh air introduction
- Ductwork sealed and tested
- Sealed crawlspace to control humidity and temperature
- Low-flow toilets and fixtures
- Durable materials- LP Smart Siding (50-year warranty) and a 30-year roof
- Infill development
- Native and drought-tolerant landscaping
- Boulder landscape stones
- Local and regional material use
- Living Wage Certified builder



Efficient Design and Lots of Space





Inviting Entry with Coat Closet and Gorgeous Stairs



9-Foot Ceiling and Oversized Windows



Open, Flowing Floor Plan



Kitchen has Granite Countertops and Stainless Appliances



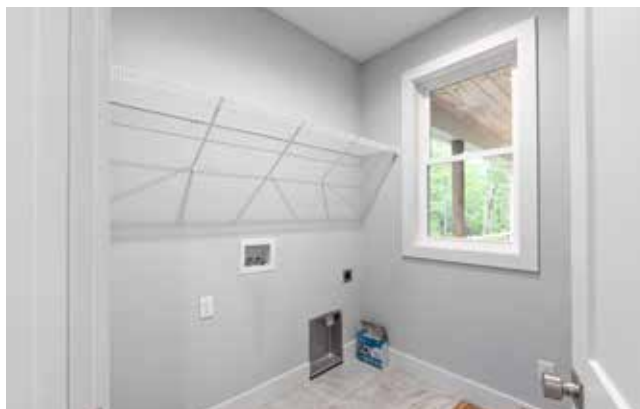
Dovetail Cabinets, Modern Fixtures, and Backyard View



Large Pantry Off of Kitchen



Powder Room on Main Level



Laundry Room with Overhead Shelving on Main Level

OLD HAW CREEK

GreenBuilt & Energy Star Home by JAG

250 Old Haw Creek Road

Asheville, NC 28805



Master on Main Features Ensuite Bath and Walk-In Closet



Hardwood Floors and Ceiling Fan in Master Bedroom



Ensuite Master Bathroom with Dual Granite Vanity



Custom Wood Shelving in Master Walk-In Closet



Second Level Landing Gets Great Natural Light



Bedroom #1 Upstairs with Clerestory Window



Bedroom #2 Upstairs with Large Closet and Desk Nook



Treetop View from Second Level Bedroom



Full Bathroom on Second Level Features Granite Vanity



Stone Steps Highlight Professionally Landscaped Yard



LP Smart Siding and a 30-Year Roof



Sunny Back Deck Perfect for Relaxing



Privacy Fencing Lines Gently Rolling Yard

Beautiful new GreenBuilt and Energy Star home by JAG Construction in the established Haw Creek neighborhood in East Asheville. Open flowing floor plan with oversized windows for great natural light. Hardwood and tile floors throughout. Modern kitchen features granite counters, stainless steel appliances, tile backsplash and a pantry. Breakfast bar opens to dining area. Bright living room and a sunny back deck perfect for entertaining. Master on main features a walk-in closet and an ensuite bathroom that includes a double granite vanity and tiled walk-in shower. The second level includes two bedrooms and a modern bathroom. Outdoor living with a covered wrap-around front porch, spacious deck and fantastic yard. Low maintenance with durable materials including a 30-year roof and 50-year siding.

[CLICK HERE FOR VIRTUAL WALKTHROUGH LINK](#)

Also, LIVE virtual walkthroughs are available on request!



For more information, please contact:

MIKE FIGURA

828.337.8190

MIKE@MYMOSAICREALTY.COM

DIRECTIONS

From downtown, take I-240 east towards US-70 east. Take exit 7 for US-70. Turn left onto US-70 east. Turn left onto Crockett Avenue. Turn right onto New Haw Creek Road. Turn left onto Cisco Road. Take a right turn onto Old Haw Creek Road. 250 Old Haw Creek Road is on the left. Sign in the yard.