



 [CLICK FOR WALKTHROUGH TOUR](#)

51 MILLS PLACE

Beautifully Updated Home • Minutes to Asheville



MOSAIC
COMMUNITY LIFESTYLE REALTY

3 Bedrooms, 2.5 Bathrooms
2,335 SF • 0.74 Acre
MLS #3633906

INFO

51 Mills Place, Asheville, NC 28804

3 Bedrooms, 2 Bathrooms

2,335 Square Feet • 0.74 Acre Lot

MLS #3633906

FEATURES

- Less than five miles to downtown Asheville; five miles to Weaverville
- Professionally landscaped 0.74-acre property
- All-new kitchen and bathrooms in recent years
- Modern, open floor plan
- Beautiful hickory hardwood floors on main level
- Cherry siding in living room and maple trim in bedrooms
- Lovely stone propane fireplace with wooden mantel and granite seat
- Kitchen features:
 - Copper breakfast bar
 - Stainless steel appliances and pantry
 - Granite countertops with stone backsplash
 - Custom pendant light
 - Slate floors
- Master suite includes access to back deck, walk-in closet, and private, split-bedroom floorplan
- Remodeled master bathroom features radiant floor heat, slate floors, riverstone sink, concrete counters with Madagascan semi-precious minerals



Relaxing, Covered Front Porch

- Current owners' updates include roof (2015), HVAC (2009), whole-house air purification system (2019), Energy Saver electric water heater (2012), new windows, custom bedroom closets, and radon mitigation system
- Basement includes office space, large playroom, guest space, half bath, and laundry
- Plenty of storage in furnace room and one-car garage
- Outside features firepit and custom playscape
- Large, flat area to play and garden
- Plenty of parking spaces above home and in driveway
- Weaverville, North Buncombe School District



Cherry Siding in Living Room



Gorgeous Hickory Hardwood Floors



Custom Built-Ins



All Windows Replaced



Modern, Open Floor Plan



Perfect Spot to Entertain



Updated Kitchen with Stainless Steel Appliances



Master Suite Features Deck Access

51 MILLS PLACE

Beautifully Updated Home

Asheville, NC 28804



Custom Concrete Countertops in Master Bathroom



Riverstone Sink and Radiant Floor Heat



Split-Bedroom Floorplan



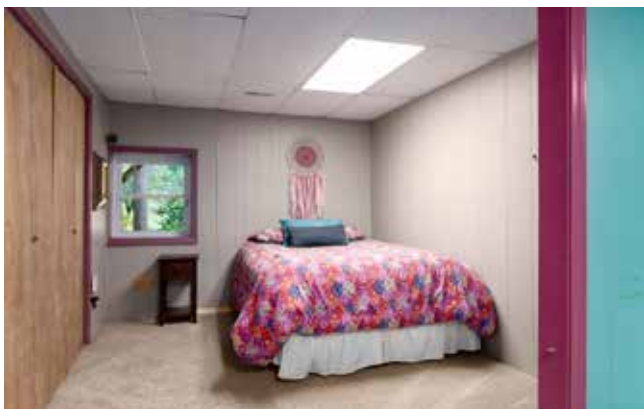
Beautiful Maple Trim



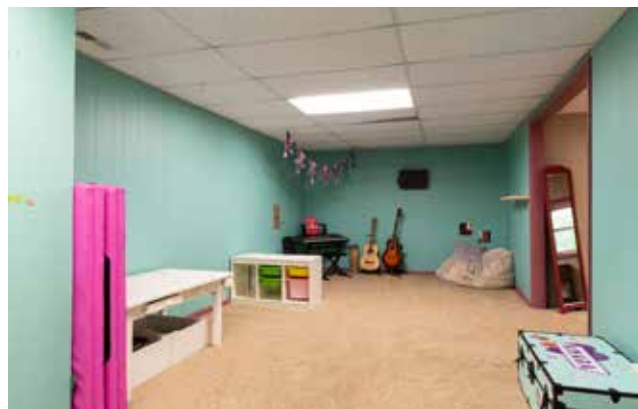
Gorgeously Updated Bathrooms



Basement Offers More Space to Work and Play



Extra Space for Guests



Playroom/Music Space/Yoga Studio

51 MILLS PLACE

Beautifully Updated Home

Asheville, NC 28804



Half Bath and Laundry in Basement



Nice Space for Outdoor Get-Togethers



Spacious Back Deck



Private Firepit Surrounded by Trees



Custom Playscape to Convey



Backyard Fun Awaits



Flat Space to Play



Professional Landscaping Surrounds Home

51 MILLS PLACE

Beautifully Updated Home

Asheville, NC 28804



Welcome Home!

51 MILLS PLACE

Beautifully updated home conveniently situated five miles from downtown Asheville and five miles from Weaverville. Just minutes to all of the daily amenities you'd like! This 0.74-acre property is ideal for entertaining with its modern, open floor plan and spacious back deck and yard. Current owners' improvements include new custom kitchen and baths, hickory hardwood floors, custom built-ins and woodwork — and updated HVAC, water heater, and roof. Professionally landscaped outdoor space features a firepit, playscape, and flat area to play and garden.



For more information, please contact:

MEGAN SHOOK

828.450.6797

MEGAN@MYMOSAICREALTY.COM

DIRECTIONS

From downtown Asheville, take I-26 toward Weaverville. Take exit 23 and turn left to go under the highway. First left on Newbridge Parkway, then an immediate right on Mills Place. Home will be on your right.