



CLICK FOR
VIDEOS

YouTube 1
HIGHLIGHTS

YouTube 2
FULL TOUR

Matterport

4 MAGNOLIA VIEW TRAIL

Hidden Oasis in the Thoms Estate Community



MOSAIC
COMMUNITY LIFESTYLE REALTY

5 Bedrooms, 4.5 Bathrooms
4,395 SF • 0.35 Acre Lot
MLS #3639305



INFO

4 Magnolia View Trail, Asheville, NC 28804

5 Bedrooms, 4.5 Bathrooms

4,395 SF • 0.35 Acre

MLS #3639305

FEATURES

- Thoms Estate - Asheville's premiere North Asheville mountain community nestled in Beaverdam Valley across from the Asheville Country Club
- Four miles from downtown Asheville
- Located on Elk Mountain Scenic Highway, the most popular cycling road in Asheville
- Tranquil settings surrounded by mountain vistas in all directions and connecting to the Blue Ridge Parkway
- Corner oversized lot, professionally landscaped for privacy, with a back yard fully enclosed by black aluminum fencing
- Exterior finishes include natural stonework and fiber cement cedar shingle siding
- Enjoy your morning coffee on the covered front porch accented by tongue-and-groove ceilings
- Adorned with an oversized foyer, crown molding and artistic arched entryways



Quaint, Covered Front Porch and Solid Wood Farm-Style Door

- Sophisticated, custom coffered ceilings in the great room open to a well-appointed gourmet kitchen
- Kitchen Aid six-burner gas range stove with vent hood and double convection ovens
- Lovely farm style sink with copper pendant lighting
- Dovetail and soft-close cabinetry
- Kitchen island featuring upgraded honed Calacatta Manhattan marble and counter-level seating for entertaining
- Leathered, brown silk granite on exterior kitchen counters

FEATURES (CONTINUED)

- Elegant, honed Calacatta gold marble 3 x 6 backsplash throughout the kitchen
- Formal dining room, perfect for those holiday gatherings, or just room to spread out while dining with guests
- Two fireplaces to cozy up to — in the study, while reading a book, or in the great room while having a chat with friends
- Great room opens to a 408-square foot, screened-in covered porch with barn door access to back yard
- Exterior 275-square foot deck made of low-maintenance Trex® decking
- Stacked stone retaining wall with firepit
- 6” onsite-finished hickory floors with custom hickory floor vents and 9’ ceilings on main and upper levels
- Decorative crown trim throughout the home
- Bright and ample floor-to-ceiling windows
- Custom light fixtures throughout
- Walk-in pantry with barn door
- Laundry room includes granite countertops with cabinets and shelves for storage
- Main-level half bath with reclaimed lumber accent wall
- Mudroom off the garage to drop off coats, shoes, or backpacks



Oversized Foyer with Arched Entryway



Thoughtful Touches Abound in Every Corner of the Home

FEATURES (CONTINUED)

- Carolina Blinds custom-installed, cordless cellular blinds that retract from top and bottom throughout the main level, primary, and lower guest bedrooms
- Upper level includes primary bedroom and three additional guest bedrooms
- Primary bedroom includes recessed lighting and ensuite bathroom with freestanding soaking tub, freestanding shower with glass surround, double vanities, and Carrera marble tile
- All bedrooms include fan boxes and electrical switches for installation of fans
- Two upper level guest bedrooms share a Jack-and-Jill bathroom
- Third upper level guest bedroom includes an ensuite bathroom with granite counters and tiled-floor tub/shower surround
- 650-square foot framed and wired, unfinished, third-story attic bonus room
- Lower level includes large family room with recessed lighting and access to fenced-in back yard
- Additional lower-level guest bedroom with ensuite bathroom for the in-laws or extended guests
- Additional 810 square feet of unfinished storage in the basement — ideal for a future wine cellar



Bedroom Window Mountain Views

COMMUNITY FEATURES

- Private, gated community located on more than 32 acres
- Open-air pavilion is the community's central gathering place, perfect for relaxing and community events
- Walking trails
- Community gardens
- Paved sidewalks
- Street lights
- Firepit, pickleball, playground, and basketball
- Mountain views surround the community



Artistic, Arched Entryways and Custom Light Fixtures



Custom Hickory Flooring and Floor Vents



Formal Dining Room with Crown Molding



Study with Gas Log Fireplace and Live-Edge Mantel



Glass French Doors and Floor-to-Ceiling Windows

4 MAGNOLIA VIEW

Hidden Oasis in the Thoms Estate Community

Asheville, NC 28804



Tongue-and-Groove Ceilings and Copper Pendant Lighting



Spacious Kitchen for Entertaining



Italian Calacatta Manhattan-Honed Marble Island



Farm-Style Sink and Dovetail, Soft-Close Cabinetry



Six-Burner KitchenAid Stove and Vent Hood



Brown Silk Granite Counters and Gold Marble Backsplash



Sophisticated Coffered Ceilings



Barn Door Pantry



Inside the Walk-In Pantry



Stacked Stone Fireplace • Custom Cabinets and Shelves



Cozy, Casual Family Dining, Surrounded by Natural Light

4 MAGNOLIA VIEW

Hidden Oasis in the Thoms Estate Community

Asheville, NC 28804



Private, Covered, Screened-in Back Porch



Mudroom Off Garage



Main-Level Laundry with Subway Tile and Granite Counters



Main-Level Half Bath with Reclaimed Lumber Accent Wall



Stairwell Leading to Second Story

4 MAGNOLIA VIEW

Hidden Oasis in the Thoms Estate Community

Asheville, NC 28804



Primary Suite with Recessed Lighting and Ceiling Fan



Spacious Walk-in Closet



Ensuite Bathroom with Double Vanities and Tile Floors



Freestanding Soaking Tub and Privacy Glass



Frameless Glass Surround and Honed Marble Shower

4 MAGNOLIA VIEW

Hidden Oasis in the Thoms Estate Community

Asheville, NC 28804



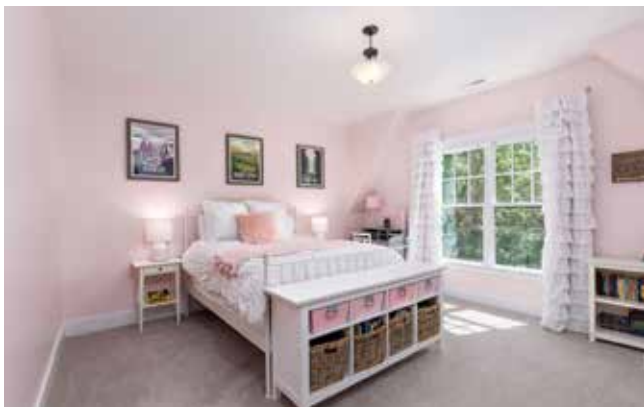
Light-Filled Guest Bedroom with Jack-and-Jill Bathroom



Second Guest Bedroom with Ensuite Jack-and-Jill Bathroom



Jack-and-Jill Bathroom between Two of the Guest Bedrooms



Third Upper-Level Guest Bedroom Suite



Ensuite Bathroom for Third Upper-Level Guest Bedroom

4 MAGNOLIA VIEW

Hidden Oasis in the Thoms Estate Community

Asheville, NC 28804



Lower-Level Family Room with Recessed Lighting



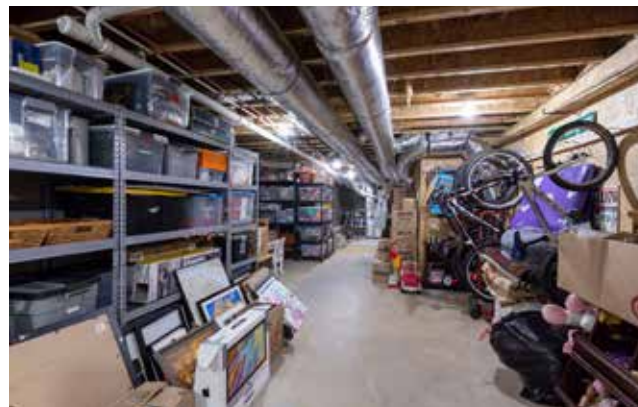
Lower-Level Guest Bedroom with Ensuite Bathroom



Lower-Level Ensuite Bathroom with Subway Tile Shower



Lower-Level Stairwell



Abundant Lower-Level Storage



Framed-in, Wired Attic, Ideal for Future Bonus Room



Private, Vaulted, Oversized, Screened-in Back Patio with Barn Door



Low-Maintenance Landscaping and Trex® Decking



Stacked Stone Retaining Wall and Firepit



Black Aluminum Fence Surrounds Back Yard



Pebbledash Retaining Wall and Flagstone Path



Two-Car Garage



Natural Stone Exterior and Beautifully Landscaped Corner Lot

Relax in this hidden oasis located on a private corner lot in Thoms Estate — North Asheville's premiere community, nestled in Beaverdam Valley across from the Asheville Country Club. Located directly off of Elk Mountain Scenic Highway, the most popular cycling road in Asheville connecting to the Blue Ridge Parkway. This exceptionally beautiful mountain masterpiece is teeming with sophisticated style, modern design, and bold, grand architecture. The magnificent, elegant custom home features an open floor plan with 9' ceilings, site-finished hickory flooring, and a custom gourmet kitchen — perfect for entertaining, yet located in a serene setting that offers the opportunity to retreat and refresh. Enjoy the spa-inspired, primary ensuite bathroom with a freestanding soaking tub and frameless glass shower with honed Carrera marble. The lower level features a mother-in-law suite with a private entrance. Enjoy the screened-in porch for those cool evenings in the mountains, or enjoy a nice hike on the trails of the 32-acre community.

CLICK FOR VIDEOS



For more information, please contact:

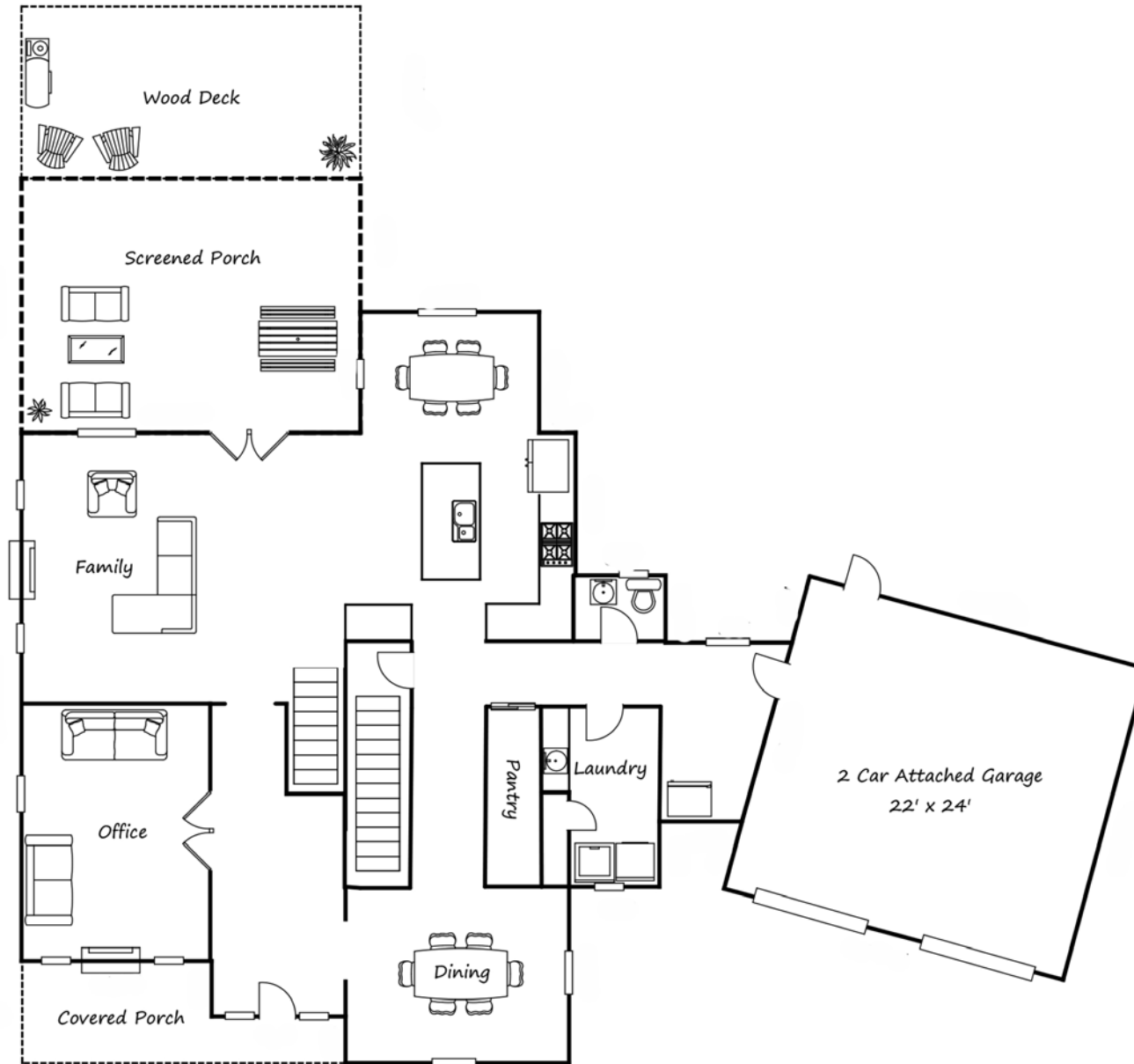
ELIZABETH PUTNAM

828.301.6374

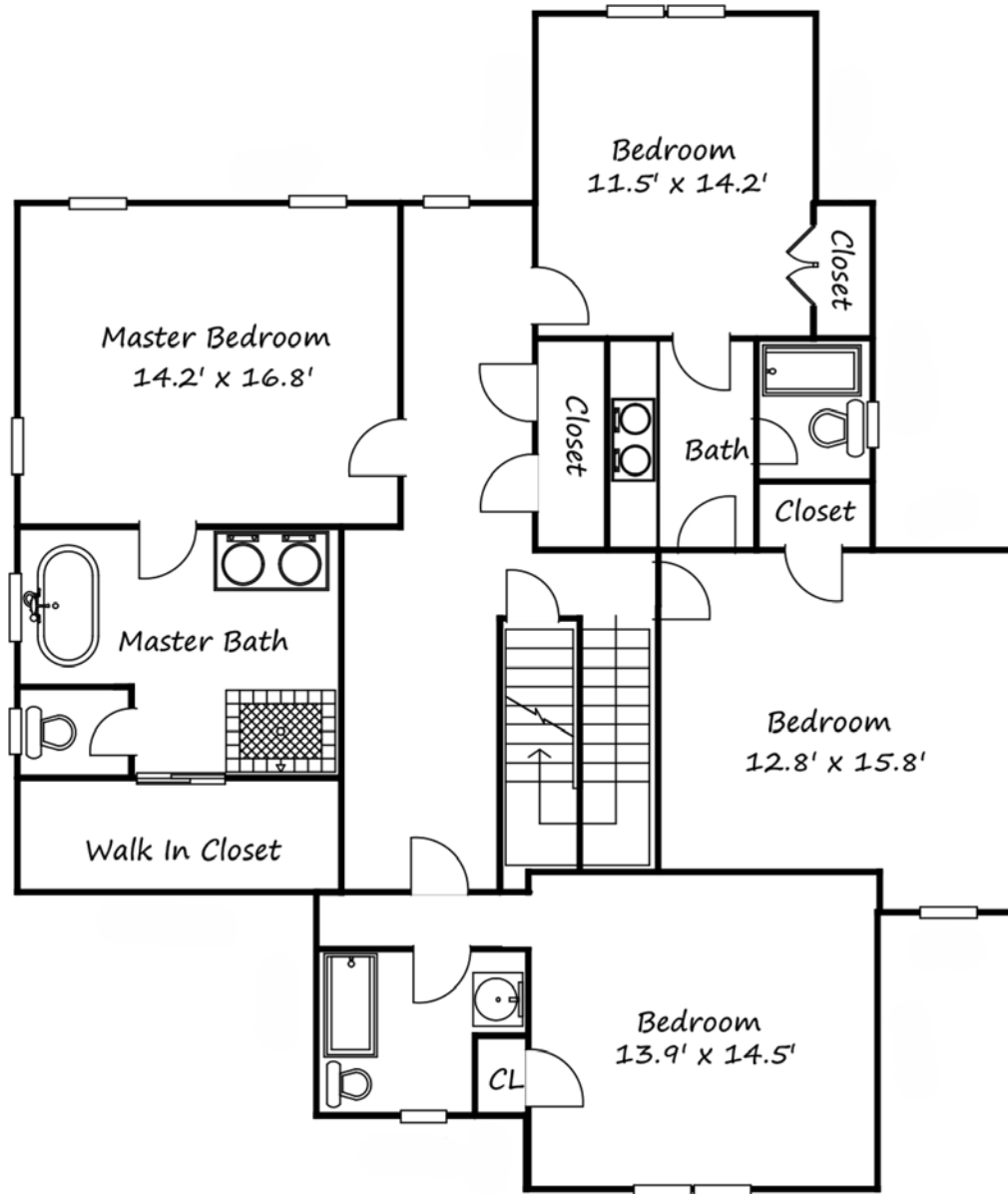
ELIZABETH@MYMOSAICREALTY.COM

DIRECTIONS

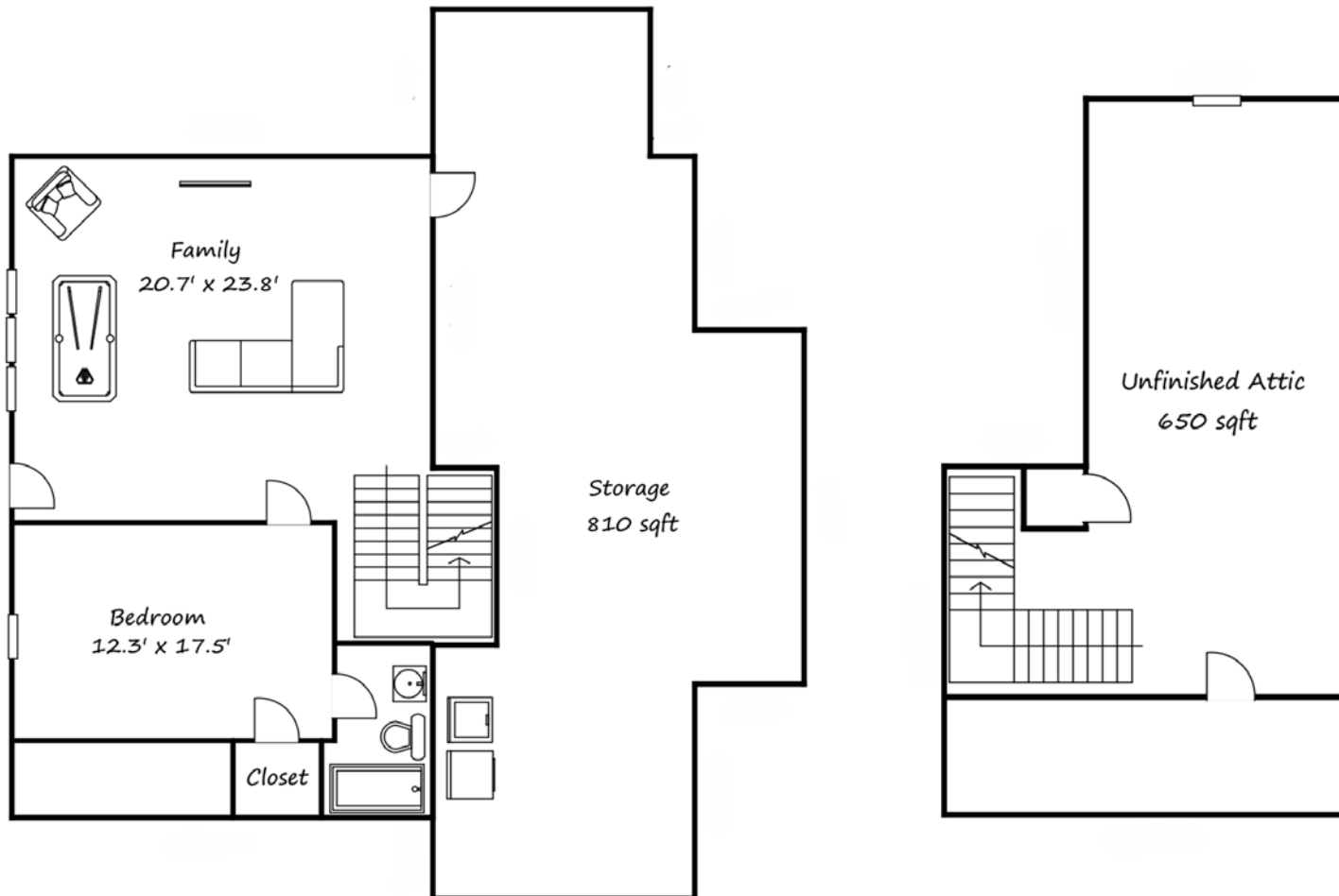
From downtown Asheville: Travel north on Merrimon Avenue for approximately 2.6 miles to Beaverdam Road. Take a right on Beaverdam Road. Travel approximately 0.63 mile to Elk Mountain Scenic Highway. Take a left onto Elk Mountain Scenic Highway. Drive approximately 0.42 mile and take a right onto French Willow Drive. Drive 0.24 mile and take a right on Magnolia View. Number 4 is the first house on the left.



FIRST LEVEL FLOORPLAN



SECOND LEVEL FLOORPLAN



BASEMENT AND ATTIC FLOORPLANS

