

**1445 W GREENLEAF AVE #1S**  
ROGERS PARK





#### ROOM DIMENSIONS

LIVING/DINING ROOM : 16' × 12'

KITCHEN : 19' × 9'

PRIMARY BEDROOM : 11' × 12'

2ND BEDROOM : 13' × 9'

SUN ROOM : 5' × 10'

DECK : 9' × 11'

2 BEDROOM

1 BATH

TAXES: \$3,520.09

ASSESSMENTS: \$393.21

Perfect Rogers Park home close to the lakefront & Morse Avenue! Not only an ideal location, but the condo offers 2 bedrooms and a sunroom that makes for an ideal home office area overlooking the courtyard. An eat-in kitchen includes granite counters, glass backsplash tiles, stainless appliances and room for a table. The living room has a gas fireplace and opens to the front sunroom. Both bedrooms are well proportioned. The bathroom has been completely updated in 2019 with new soaking tub, sink & vanity, all new tile work, lighting and storage cabinet. Tray ceilings in the living room & kitchen, hardwood floors throughout, in-unit laundry, individual furnace and central air and a large deck off the kitchen for outdoor grilling & relaxing are just some of the great features of this home. Probably best of all, from this location you can stroll to the lakefront & beach, or enjoy dinner and drinks outside along Glenwood at Morse Avenue just 2 blocks away where the block has been closed to traffic for outdoor dining. Truly a charming area to sit and enjoy. The Morse red line station is also just 2 blocks away. Additionally, a short 5 blocks north is another closed off block at Jarvis Square for dining and drinking as well. The sense of community can't be matched in this area, especially during the warmer spring, summer, and fall months.





© VHT STUDIOS



© VHT STUDIOS





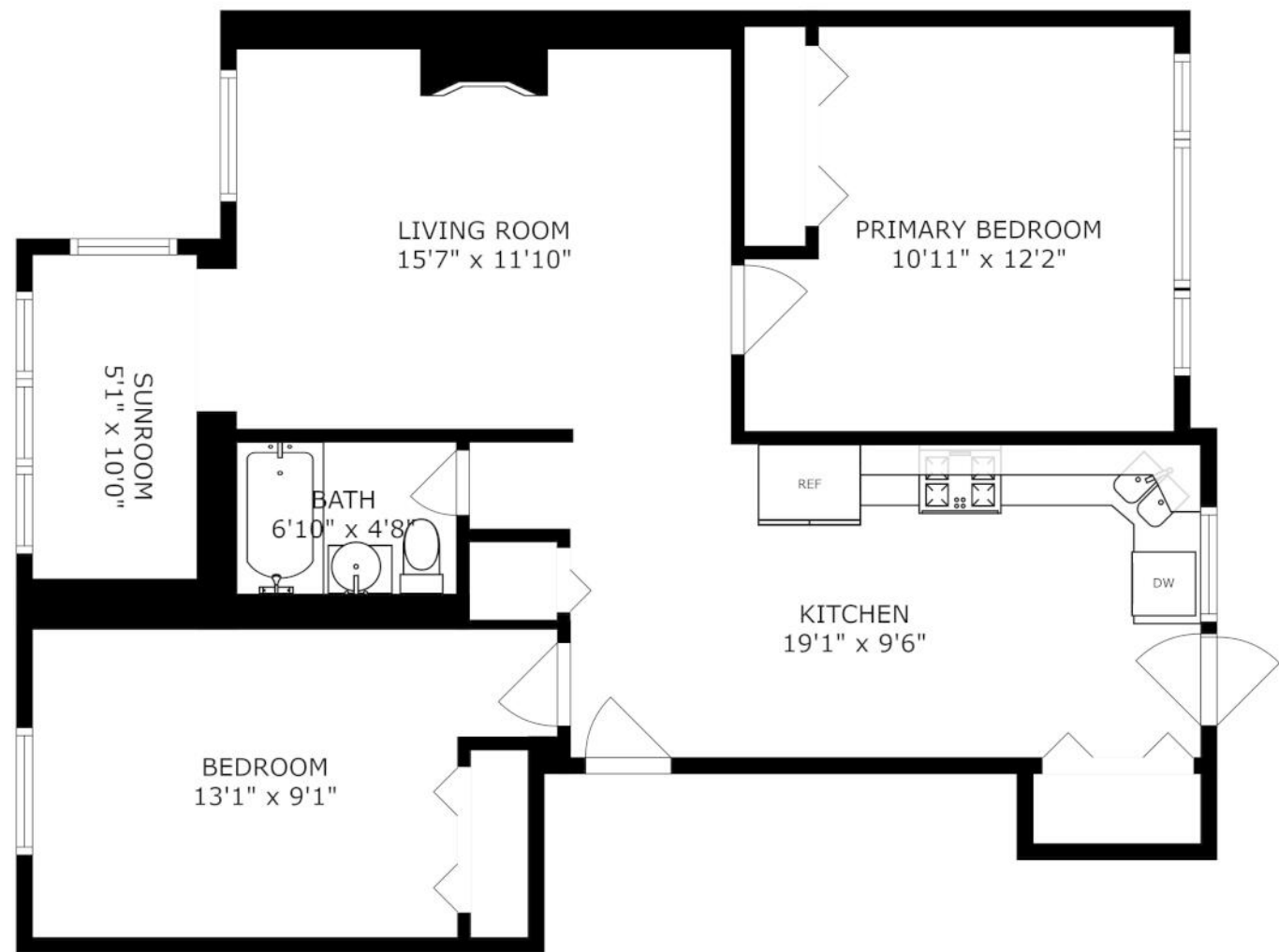
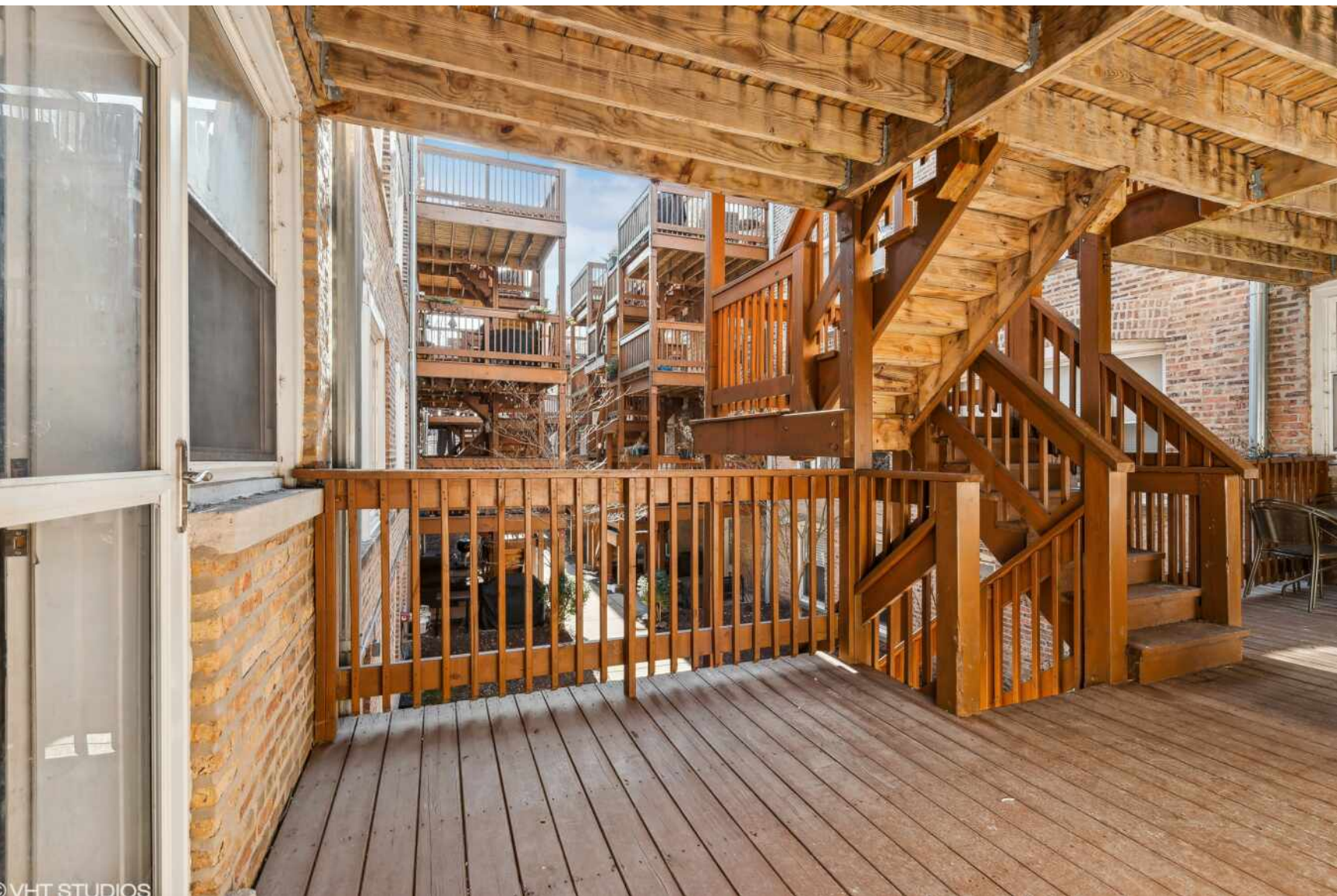
VHT STUDIOS



©VHT STUDIOS







SIZES AND DIMENSIONS ARE APPROXIMATE, ACTUAL MAY VARY.



**ED JELINEK**

(773) 230-0083

EDJELINEK@ATPROPERTIES.COM

WWW.THEJELINEKGROUP.NET

the  
jelinek  
group



All specifications, features, designs, price, assessments, taxes and materials are subject to change without notice. Depicted floor plans and architectural renderings are only an artist's impression.

