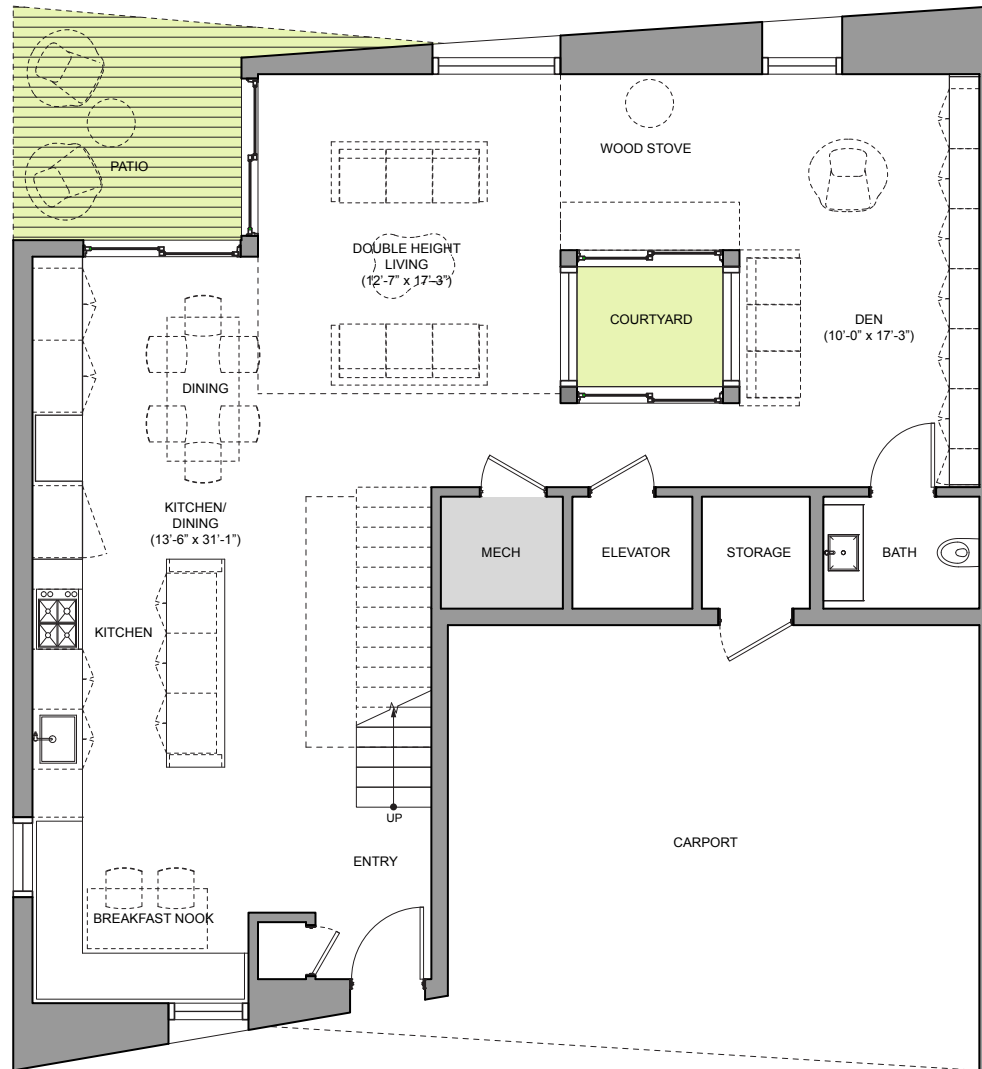


3 BEDROOM UNIT

Plans, dimensions and features shown are approximate and are subject to change without notice or obligation. Variations may occur depending, for example, on construction variances, location of unit and/or mechanical or structural requirements.

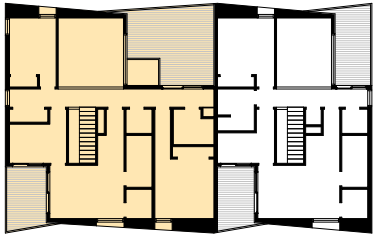
SQUARE FOOTAGE

UNIT = 2,296 SF
 PATIO = 435 SF
 TOTAL LIVABLE = 2,731 SF



FIRST FLOOR



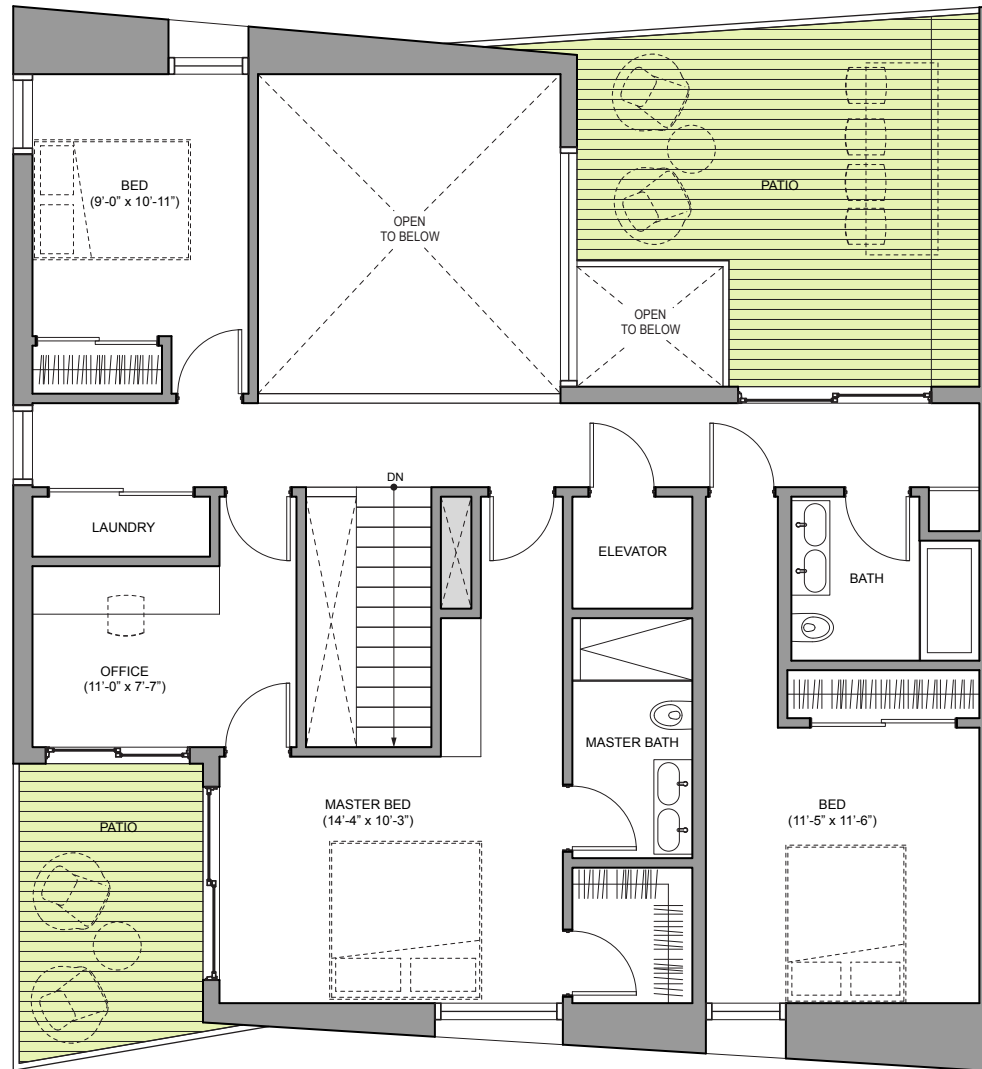


3 BEDROOM UNIT

Plans, dimensions and features shown are approximate and are subject to change without notice or obligation. Variations may occur depending, for example, on construction variances, location of unit and/or mechanical or structural requirements.

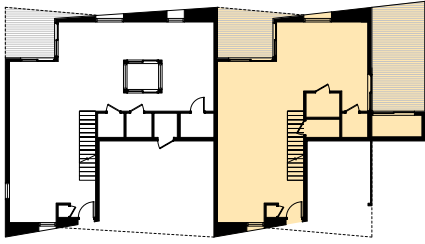
SQUARE FOOTAGE

UNIT = 2,296 SF
 PATIO = 435 SF
 TOTAL LIVABLE = 2,731 SF



SECOND FLOOR



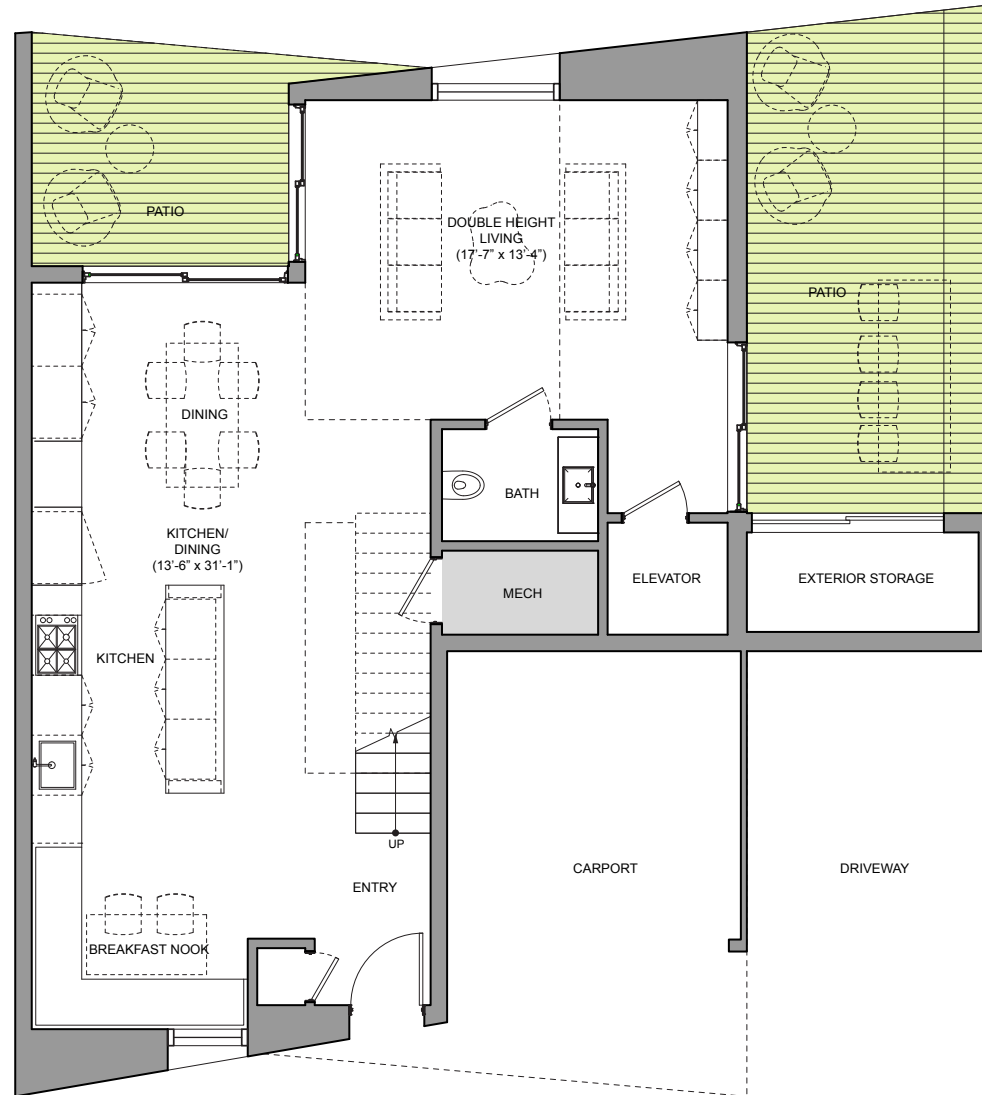


2 BEDROOM UNIT

Plans, dimensions and features shown are approximate and are subject to change without notice or obligation. Variations may occur depending, for example, on construction variances, location of unit and/or mechanical or structural requirements.

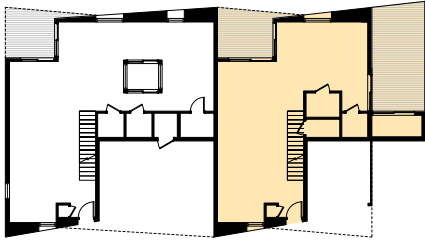
SQUARE FOOTAGE

UNIT =	1,804	SF
PATIO =	504	SF
STORAGE = (EXTERIOR)	53	SF
TOTAL LIVABLE =	2,361	SF



FIRST FLOOR - WITH ELEVATOR



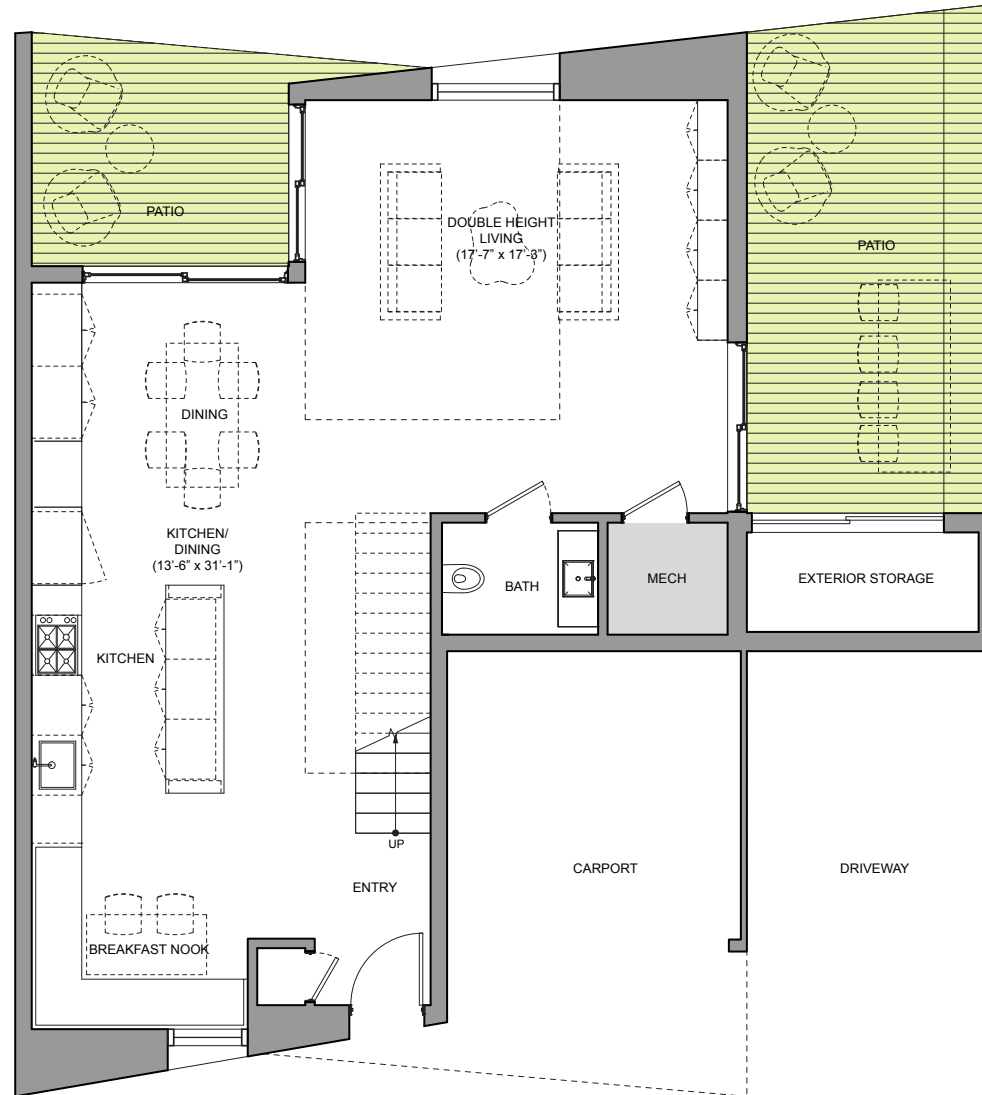


2 BEDROOM UNIT

Plans, dimensions and features shown are approximate and are subject to change without notice or obligation. Variations may occur depending, for example, on construction variances, location of unit and/or mechanical or structural requirements.

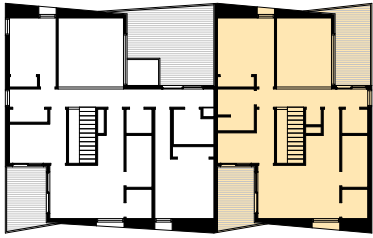
SQUARE FOOTAGE

UNIT =	1,804	SF
PATIO =	504	SF
STORAGE = (EXTERIOR)	53	SF
TOTAL LIVABLE =	2,361	SF



FIRST FLOOR - WITHOUT ELEVATOR



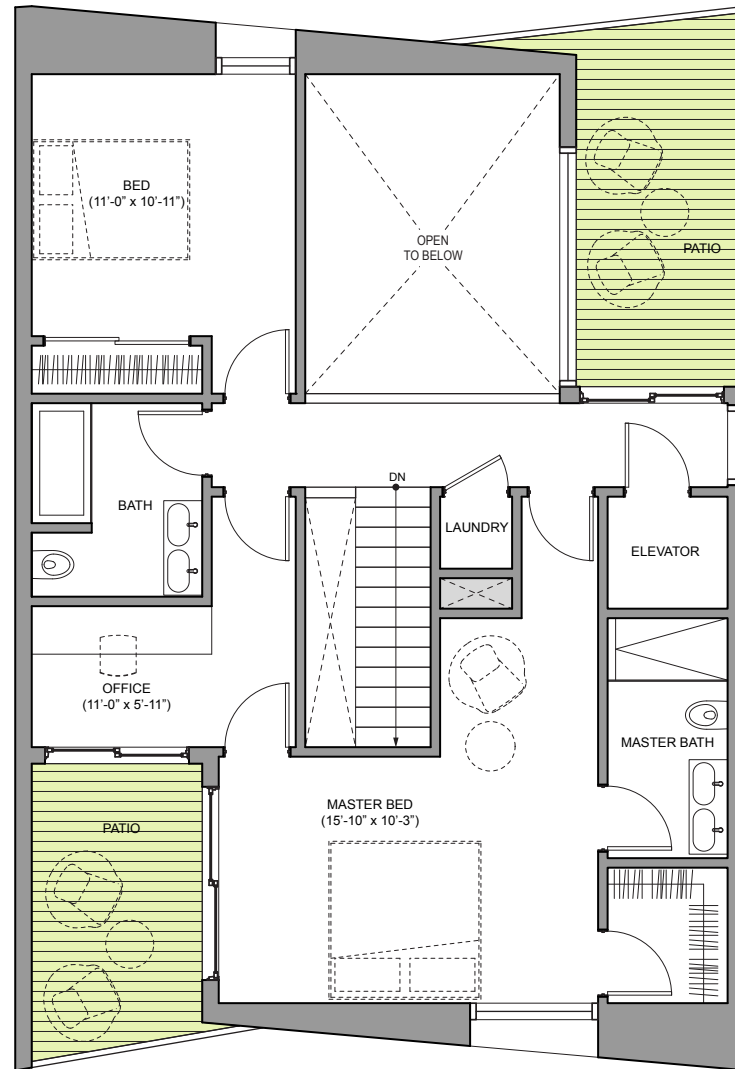


2 BEDROOM UNIT

Plans, dimensions and features shown are approximate and are subject to change without notice or obligation. Variations may occur depending, for example, on construction variances, location of unit and/or mechanical or structural requirements.

SQUARE FOOTAGE

UNIT =	1,804	SF
PATIO =	504	SF
STORAGE =	53	SF
(EXTERIOR)		
TOTAL LIVABLE =	2,361	SF



SECOND FLOOR

