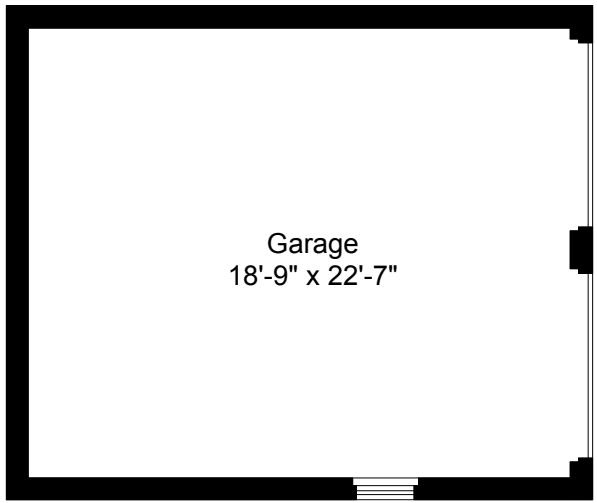


First Floor Plan
Ceiling Height = 12'-0"



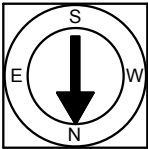
Garage Plan
Ceiling Height = 7'-10"

76 Bolton Street
Cambridge, MA 02140



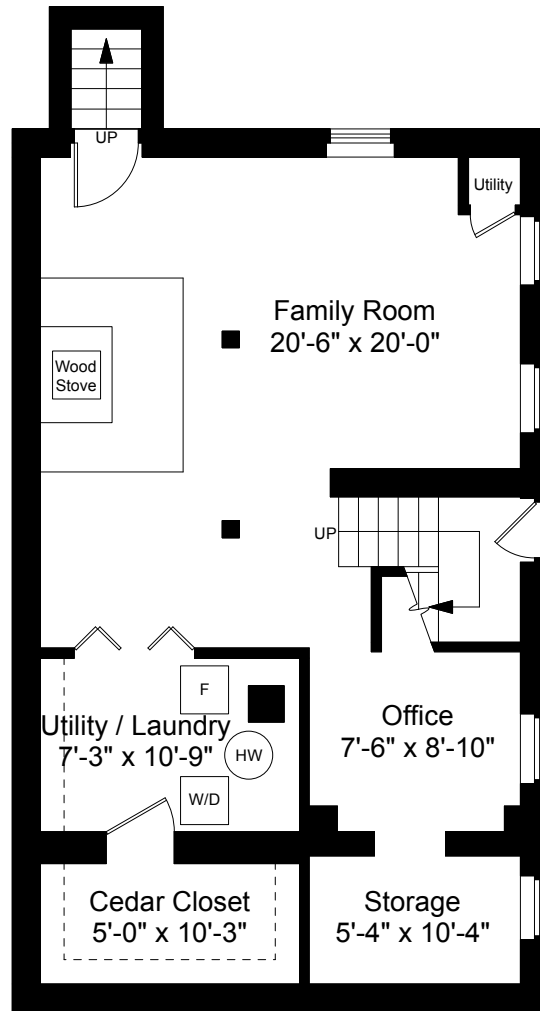
Scale 1/8" = 1'-0"

1



Completed: June 2018
 Note: Dimensions are not guaranteed and are provided for informational purposes only. Individual room dimensions are not used to calculate overall square footage.





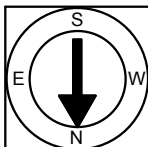
Lower Level Plan
Ceiling Height = 7'-0"

76 Bolton Street
Cambridge, MA 02140



Scale 1/8" = 1'-0"

2



Completed: June 2018

Note: Dimensions are not guaranteed and are provided for informational purposes only. Individual room dimensions are not used to calculate overall square footage.

NATIONAL
—FLOOR PLANS—
& PHOTOGRAPHY
(800) 328-0217