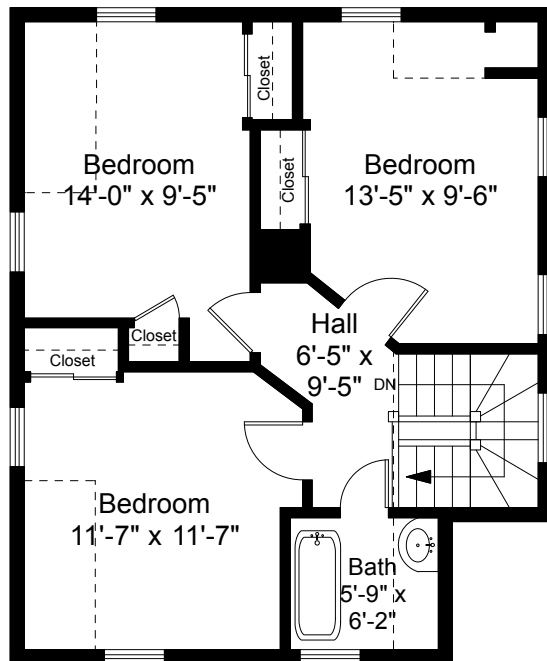


First Floor Plan
Ceiling Height = 8'-4"



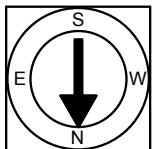
Second Floor Plan
Ceiling Height = 8'-0"

5 Fremont Avenue
Somerville, MA 02143



Scale 1/8" = 1'-0"

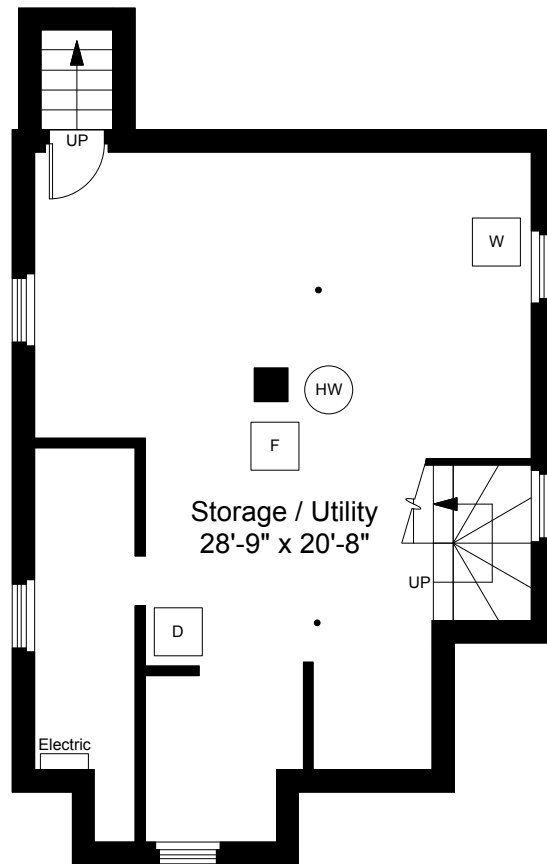
1



Completed: October 2018

Note: Dimensions are not guaranteed and are provided for informational purposes only. Individual room dimensions are not used to calculate overall square footage.

NATIONAL
FLOOR PLANS
& PHOTOGRAPHY
(800) 328-0217



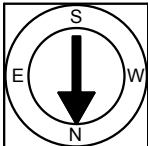
Basement Plan
Ceiling Height = 6'-2"

5 Fremont Avenue
Somerville, MA 02143



Scale 1/8" = 1'-0"

2



Completed: October 2018

Note: Dimensions are not guaranteed and are provided for informational purposes only. Individual room dimensions are not used to calculate overall square footage.

NATIONAL
—FLOOR PLANS—
& PHOTOGRAPHY
(800) 328-0217