

Greenwich Real Estate Monthly Market Report – June 2013

Jack Sarsen, David Ogilvy & Associates

Christie's International Real Estate

75 Arch Street, Greenwich, CT 06830

203-253-0476 | jsarsen@gmail.com

June 2013 Summary

| | |
|-----------------------------|-------------|
| Single Family Homes Sold | 85 |
| Average Original List Price | \$2,310,176 |
| Average List Price | \$2,183,890 |
| Average Sale Price | \$2,065,643 |
| Average Days on Market | 147 |

June 2013 Single Family Homes Average Sales Price by Area

| | TOTAL SOLD | ORIG AVG LIST PRICE | AVERAGE LIST PRICE | AVERAGE SALE PRICE | % SALE TO LIST PRICE | AVG DOM |
|-----------------------|------------|---------------------|--------------------|--------------------|----------------------|------------|
| GREENWICH | 38 | \$2,637,389 | \$2,427,600 | \$2,272,395 | 93.61% | 207 |
| COS COB | 10 | \$1,182,700 | \$1,182,700 | \$1,138,800 | 96.29% | 57 |
| RIVERSIDE | 21 | \$2,117,095 | \$2,077,810 | \$2,004,714 | 96.48% | 93 |
| OLD GREENWICH | 16 | \$2,346,750 | \$2,233,563 | \$2,104,750 | 94.23% | 123 |
| ALL AREAS AVG. | 85 | \$2,310,176 | \$2,183,890 | \$2,065,643 | 94.59% | 147 |

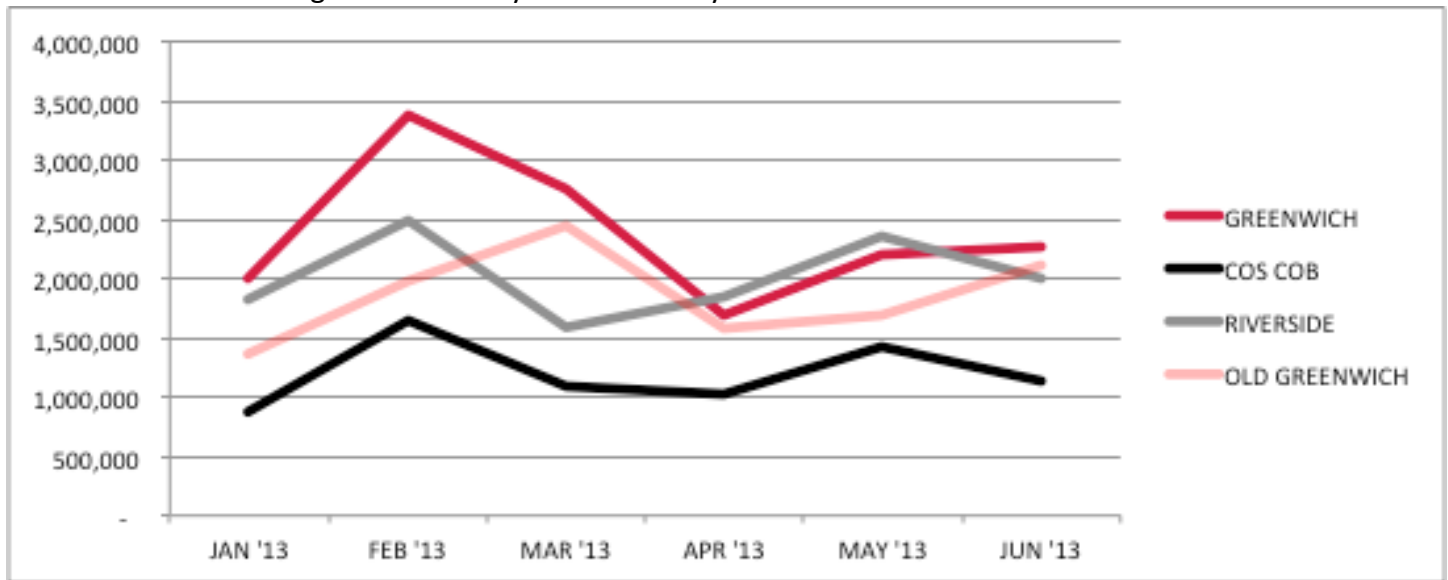
June 2013 Single Family Homes Sold by Price Range

| | GREENWICH | COS COB | RIVERSIDE | OLD GREENWICH | TOTAL |
|----------------|-----------|-----------|-----------|---------------|-----------|
| Under \$1M | 10 | 5 | 3 | 2 | 20 |
| \$1M - \$2M | 14 | 5 | 9 | 7 | 35 |
| \$2M - \$3M | 8 | 0 | 7 | 6 | 21 |
| \$3M - \$4M | 2 | 0 | 1 | 0 | 3 |
| \$4M - \$5M | 1 | 0 | 0 | 0 | 1 |
| \$5M - \$7.5M | 1 | 0 | 1 | 0 | 2 |
| \$7.5M - \$10M | 1 | 0 | 0 | 1 | 2 |
| \$10M+ | 1 | 0 | 0 | 0 | 1 |
| TOTAL | 38 | 10 | 21 | 16 | 85 |

Six-Month Average Sales Price by Area – January through June 2013

| | JAN '13 | FEB '13 | MAR '13 | APR '13 | MAY '13 | JUN '13 |
|-----------------------|------------------|------------------|------------------|------------------|------------------|------------------|
| GREENWICH | 1,999,962 | 3,381,219 | 2,746,964 | 1,680,602 | 2,205,165 | 2,272,395 |
| COS COB | 875,000 | 1,655,000 | 1,097,940 | 1,023,500 | 1,431,305 | 1,138,800 |
| RIVERSIDE | 1,822,188 | 2,494,905 | 1,588,557 | 1,848,680 | 2,359,231 | 2,004,714 |
| OLD GREENWICH | 1,363,667 | 1,981,714 | 2,439,111 | 1,569,724 | 1,691,179 | 2,104,750 |
| ALL AREAS AVG. | 1,851,427 | 2,802,108 | 2,169,763 | 1,658,229 | 2,006,535 | 2,060,048 |

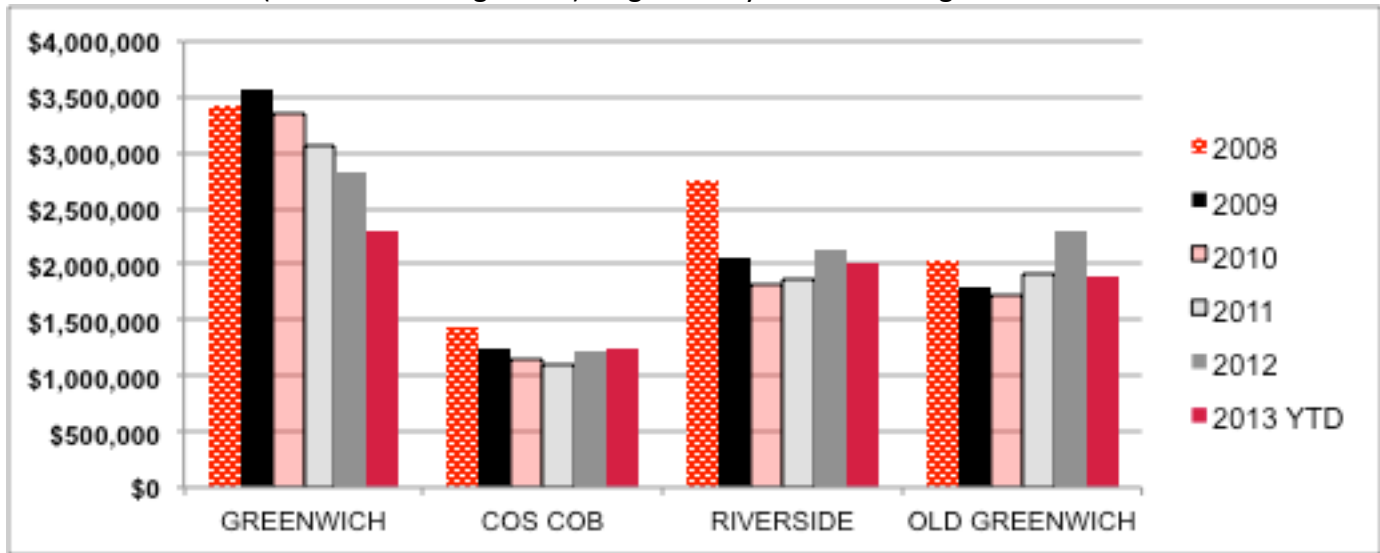
Chart: Six-Month Average Sales Price by Area – January to June 2013



2008 – 2013 Single Family Homes Average Sales Price

| | GREENWICH | COS COB | RIVERSIDE | OLD GREENWICH | AVERAGE |
|----------|-------------|-------------|-------------|---------------|--------------------|
| 2008 | \$3,423,813 | \$1,429,370 | \$2,750,007 | \$2,041,163 | \$2,822,185 |
| 2009 | \$3,575,890 | \$1,249,104 | \$2,054,154 | \$1,785,979 | \$2,668,805 |
| 2010 | \$3,358,195 | \$1,140,153 | \$1,827,964 | \$1,732,860 | \$2,518,863 |
| 2011 | \$3,058,461 | \$1,098,761 | \$1,858,377 | \$1,905,612 | \$2,429,922 |
| 2012 | \$2,833,234 | \$1,224,822 | \$2,135,382 | \$2,294,359 | \$2,387,773 |
| 2013 YTD | \$2,303,890 | \$1,239,426 | \$2,004,889 | \$1,889,605 | \$2,039,789 |

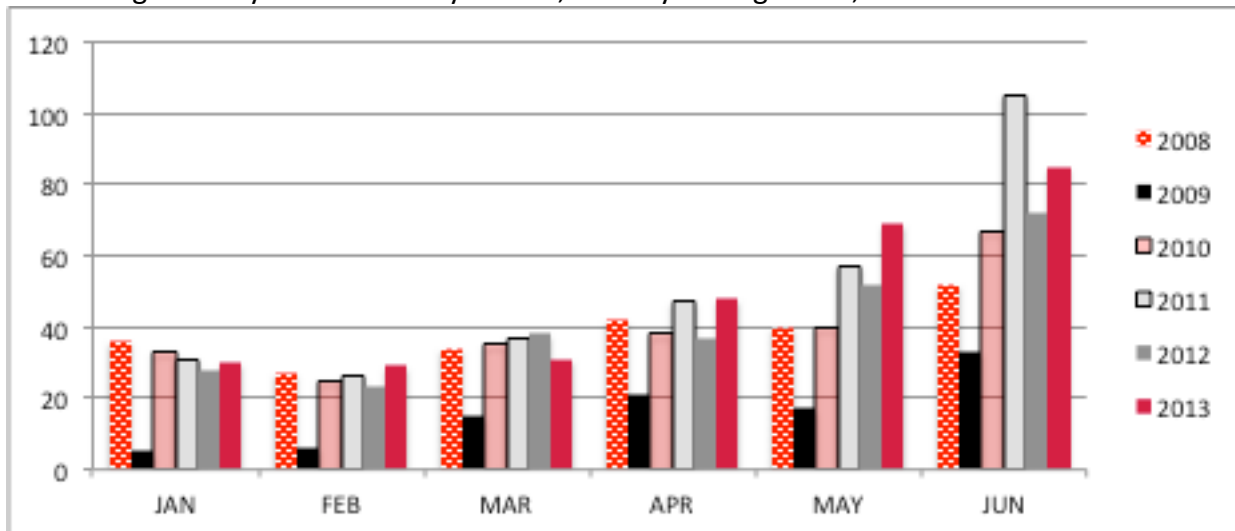
Chart: 2008 – 2013 (2013 YTD through June) Single Family Homes Average Sales Price



Single Family Homes Sold by Month, January through June; 2008 – 2013

| | JAN | FEB | MAR | APR | MAY | JUN |
|-------------|-----|-----|-----|-----|-----|-----|
| 2008 | 36 | 27 | 34 | 42 | 40 | 52 |
| 2009 | 5 | 6 | 15 | 21 | 17 | 33 |
| 2010 | 33 | 25 | 35 | 38 | 40 | 67 |
| 2011 | 31 | 26 | 37 | 47 | 57 | 105 |
| 2012 | 28 | 23 | 38 | 37 | 52 | 72 |
| 2013 | 30 | 29 | 31 | 48 | 69 | 85 |

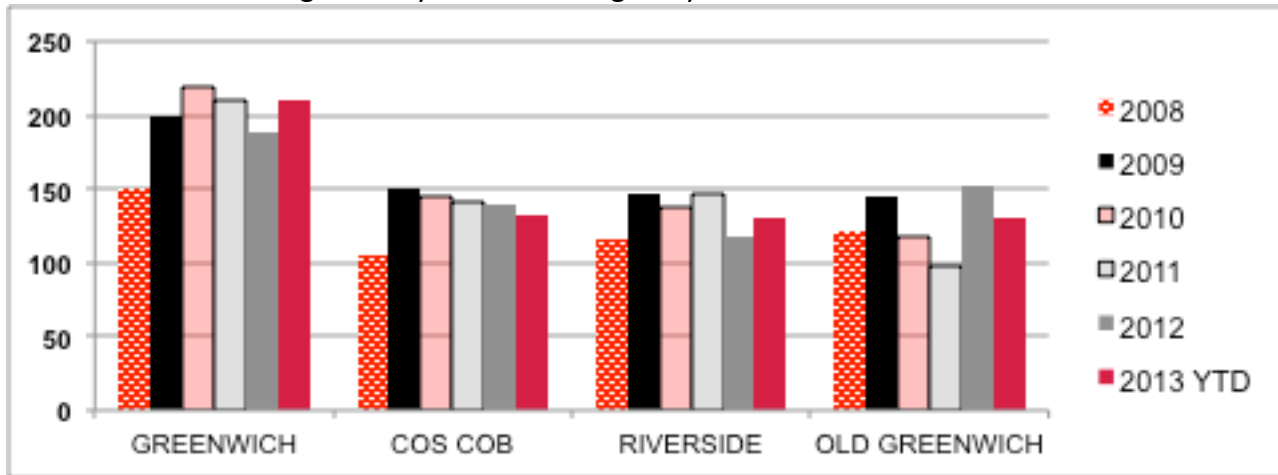
Chart: Single Family Homes Sold by Month, January through June; 2008 – 2013



2008 – 2013 Single Family Homes Average Days on Market

| | GREENWICH | COS COB | RIVERSIDE | OLD GREENWICH | AVERAGE |
|-----------------|------------------|----------------|------------------|----------------------|----------------|
| 2008 | 151 | 105 | 116 | 121 | 134 |
| 2009 | 199 | 150 | 147 | 144 | 174 |
| 2010 | 220 | 144 | 138 | 117 | 177 |
| 2011 | 211 | 142 | 147 | 97 | 172 |
| 2012 | 188 | 139 | 118 | 152 | 161 |
| 2013 YTD | 211 | 133 | 130 | 130 | 168 |

Chart: 2008 – 2013 Single Family Homes Average Days on Market



June 2013 Single Family Homes Sold: Greenwich

| Address | Style | SqFt | YrBlt | YrRnv | Bds | FBths | HBths | Ac | List Price | Sale Price | DOM | CD |
|------------------------|---------|-------|-------|-------|-----|-------|-------|-------|------------|------------|------|---------|
| 58 RIVERDALE AV | COLONIL | 1123 | 1926 | | 2 | 1 | | 0.12 | 459,900 | 459,000 | 189 | 6/21/13 |
| 14 POWELL ST | RANCH | 1044 | 1949 | 2007 | 2 | 1 | 1 | 0.12 | 475,000 | 470,000 | 51 | 6/28/13 |
| 16 HIGH ST | COLONIL | 1369 | 1920 | 2004 | 3 | 1 | 1 | 0.14 | 525,000 | 500,000 | 276 | 6/14/13 |
| 10 ROCKLAND PL | COLONIL | 1141 | 1940 | | 2 | 1 | | 0.138 | 539,000 | 539,000 | 57 | 6/17/13 |
| 35 EDGEWOOD AV | COLONIL | 1429 | 1916 | 2013 | 2 | 2 | | 0.21 | 589,000 | 589,000 | 46 | 6/6/13 |
| 51 CAMBRIDGE DR | RR | 2748 | 1966 | 1997 | 4 | 2 | 1 | 0.19 | 849,900 | 848,000 | 43 | 6/5/13 |
| 44 MITCHELL PL | SPLIT | 1813 | 1956 | 2009 | 4 | 2 | 1 | 0.18 | 895,000 | 850,000 | 70 | 6/24/13 |
| 99 STONEHEDGE DR | CONTEMP | 2297 | 1961 | | 5 | 3 | 1 | 1 | 875,000 | 875,000 | 6 | 6/3/13 |
| 9 BOLLING PL | FARMHSE | 1310 | 1924 | 2011 | 3 | 1 | 1 | 0.097 | 950,000 | 937,500 | 45 | 6/5/13 |
| 248 STANWICH RD | COLONIL | 2422 | 1960 | 2010 | 2 | 2 | | 1.21 | 995,000 | 960,000 | 45 | 6/24/13 |
| 37 Ettl Ln | SEE/RMK | 2908 | 1949 | 2009 | 3 | 3 | 1 | 0.21 | 1,175,000 | 1,125,000 | 375 | 6/19/13 |
| 90 BUCKFIELD LN | COLONIL | 3023 | 1987 | | 3 | 2 | 1 | 2.01 | 1,395,000 | 1,225,000 | 382 | 6/4/13 |
| 1025 NORTH ST | COLONIL | 3330 | 1987 | 2010 | 4 | 3 | 1 | 0.5 | 1,295,000 | 1,250,000 | 59 | 6/28/13 |
| 71 INDIAN HARBOR DR | FARMHSE | 2248 | 1896 | 2010 | 4 | 2 | 1 | 0.23 | 1,275,000 | 1,270,000 | 28 | 6/14/13 |
| 44 DUNCAN DR | COLONIL | 3542 | 1971 | | 4 | 4 | 1 | 1.1 | 1,350,000 | 1,280,000 | 395 | 6/27/13 |
| 51 PINE RIDGE RD | CONTEMP | 3496 | 1970 | | 4 | 3 | | 1.22 | 1,499,000 | 1,395,000 | 246 | 6/20/13 |
| 130 WOODSIDE DR | COLONIL | 2578 | 1965 | | 4 | 3 | 1 | 0.38 | 1,419,000 | 1,395,000 | 79 | 6/14/13 |
| 15 COTSWOOD RD | CONTEMP | 4124 | 1977 | | 5 | 4 | 1 | 1.13 | 1,775,000 | 1,600,000 | 1379 | 6/27/13 |
| 592 NORTH ST | COLONIL | 3363 | 1958 | | 5 | 5 | 1 | | 1,650,000 | 1,650,000 | 0 | 6/19/13 |
| 361 STANWICH RD | RANCH | 3537 | 1956 | 2004 | 4 | 3 | 1 | 2.08 | 1,699,000 | 1,706,000 | 18 | 6/27/13 |
| 41 ANGUS LN | COLONIL | 3304 | 1978 | 2012 | 4 | 3 | 1 | 0.9 | 1,695,000 | 1,750,000 | 39 | 6/26/13 |
| 652 RIVERSVILLE RD | COLRANC | 6196 | 1952 | 2000 | 5 | 4 | 1 | 4 | 1,995,000 | 1,825,000 | 11 | 6/4/13 |
| 78 ROCKWOOD LN | CONTEMP | 3190 | 1959 | | 3 | 3 | | 2.91 | 1,995,000 | 1,900,000 | 74 | 6/28/13 |
| 11 BUTTERNUT HOLLOW RD | COLONIL | 4067 | 1962 | 2010 | 4 | 3 | 1 | 2.01 | 1,995,000 | 1,950,000 | 15 | 6/12/13 |
| 3 INTERVALE PL | COLONIL | 4366 | 1925 | 2008 | 4 | 3 | 2 | 0.88 | 2,500,000 | 2,390,000 | 161 | 6/26/13 |
| 15 ANDREWS RD | MEDITRN | 4079 | 1934 | 1997 | 4 | 4 | 1 | 1.45 | 2,700,000 | 2,550,000 | 378 | 6/25/13 |
| 669 LAKE AV | GEOGCOL | 5558 | 1952 | 2008 | 5 | 5 | 1 | 2.07 | 3,250,000 | 2,725,000 | 332 | 6/4/13 |
| 5 JOFRAN LN | COLONIL | 4615 | 1954 | 2007 | 4 | 5 | 1 | 1.22 | 2,875,000 | 2,727,500 | 48 | 6/27/13 |
| 207 OLD MILL RD | COLONIL | 5142 | 1934 | 2009 | 6 | 6 | 1 | 3.7 | 3,095,000 | 2,865,000 | 116 | 6/10/13 |
| 19 STONY WYLDE | EURSTYL | 5751 | 1974 | 2010 | 5 | 5 | 1 | 2.01 | 3,100,000 | 2,900,000 | 336 | 6/13/13 |
| 627 ROUND HILL RD | CONTEMP | 4219 | 1978 | | 4 | 3 | 1 | 3.18 | 3,250,000 | 2,915,000 | 249 | 6/7/13 |
| 59 UPLAND DR | ENGLMNR | | 1926 | 2007 | 5 | 5 | 2 | 1.5 | 3,295,000 | 2,950,000 | 186 | 6/14/13 |
| 154 STANWICH RD | COLONIL | 5787 | 2000 | 2005 | 4 | 6 | 2 | 1.02 | 3,850,000 | 3,630,000 | 380 | 6/17/13 |
| 24 ROCK RIDGE AV | COLONIL | 7132 | 1920 | 1986 | 7 | 6 | 2 | 2.42 | 3,825,000 | 3,700,000 | 15 | 6/5/13 |
| 422 N MAPLE AV | COLONIL | 9305 | 2011 | | 6 | 6 | 2 | 1.33 | 4,995,000 | 4,850,000 | 31 | 6/6/13 |
| 714 LAKE AV | COLONIL | 6709 | 1976 | 2012 | 6 | 6 | 1 | 2 | 5,650,000 | 5,650,000 | 55 | 6/20/13 |
| 516 NORTH ST | COLONIL | 12334 | 2000 | 2004 | 6 | 7 | 3 | 2.75 | 8,500,000 | 7,500,000 | 190 | 6/3/13 |
| 21 MIDWOOD DR | EURSTYL | 16378 | 2006 | 2007 | 7 | 8 | 4 | 2.5 | 11,999,000 | 10,650,000 | 1476 | 6/28/13 |

June 2013 Single Family Homes Sold: Cos Cob

| Address | Style | SqFt | YrBlt | YrRnv | Bds | FBths | HBths | Ac | List Price | Sale Price | DOM | CD |
|--------------------|---------|------|-------|-------|-----|-------|-------|-------|------------|------------|-----|---------|
| 18 ROBERTSON LN | SPLIT | 2235 | 1960 | 1988 | 3 | 3 | | 0.181 | 699,000 | 678,500 | 30 | 6/18/13 |
| 44 DANDY DR | CAPECOD | 1579 | 1958 | | 3 | 2 | | 1.06 | 799,000 | 785,000 | 30 | 6/3/13 |
| 37 CROSS LN | COLONIL | 1332 | 1917 | | 3 | 1 | 1 | 0.14 | 869,000 | 827,000 | 56 | 6/24/13 |
| 17 RONALD LN | SPLIT | 1687 | 1961 | 2007 | 4 | 3 | | 0.4 | 935,000 | 910,000 | 108 | 6/10/13 |
| 63 LOUGHLIN AV | COLONIL | | 1914 | 2013 | 4 | 3 | | 0.17 | 1,100,000 | 962,500 | 69 | 6/27/13 |
| 22 MIANUS VIEW TER | COLONIL | 2558 | 1975 | 2000 | 4 | 3 | 1 | 0.31 | 1,100,000 | 1,100,000 | 98 | 6/24/13 |
| 24 HORSESHOE RD | CONTEMP | 2557 | 1966 | 1985 | 3 | 3 | 1 | 1.39 | 1,195,000 | 1,200,000 | 31 | 6/6/13 |
| 8 TAYLOR DR | COLONIL | 3805 | 2008 | | 5 | 4 | 1 | 0.19 | 1,495,000 | 1,450,000 | 19 | 6/13/13 |
| 174 CAT ROCK RD | COTSWLD | 2563 | 1937 | 2012 | 3 | 3 | | 1.01 | 1,650,000 | 1,550,000 | 42 | 6/13/13 |
| 25 DARTMOUTH RD | COLONIL | 3894 | 1965 | 1999 | 5 | 4 | 1 | 2.1 | 1,985,000 | 1,925,000 | 84 | 6/26/13 |

June 2013 Single Family Homes Sold: Riverside

| Address | Style | SqFt | YrBlt | YrRnv | Bds | FBths | HBths | Ac | List Price | Sale Price | DOM | CD |
|--------------------|---------|------|-------|-------|-----|-------|-------|-------|------------|------------|-----|---------|
| 29 CARY RD | CONTEMP | 1776 | 1946 | 1983 | 4 | 3 | | 0.22 | 549,000 | 575,000 | 7 | 6/3/13 |
| 34 LOCKWOOD LN | RANCH | 1344 | 1949 | | 3 | 2 | | 0.35 | 658,000 | 658,000 | 26 | 6/28/13 |
| 14 BONWIT RD | CAPECOD | 1915 | 1955 | 2004 | 3 | 2 | | 0.25 | 745,000 | 802,000 | 27 | 6/5/13 |
| 18 LANCER RD | COLONIL | 1644 | 1960 | | 3 | 2 | 1 | 0.3 | 979,000 | 1,030,000 | 21 | 6/24/13 |
| 38 BREEZEMONT AV | SEE/RMK | 2644 | 1984 | | 4 | 2 | 1 | 0.487 | 1,075,000 | 1,055,000 | 74 | 6/14/13 |
| 82 SHEEPHILL RD | COLONIL | 2950 | 1949 | 2013 | 3 | 2 | 1 | 0.38 | 1,595,000 | 1,487,500 | 87 | 6/27/13 |
| 56 RIVERSIDE LN | COLONIL | 3142 | 1946 | 2002 | 5 | 4 | 1 | 0.285 | 1,645,000 | 1,622,500 | 36 | 6/6/13 |
| 73 SUMMIT RD | COLONIL | 2929 | | 2007 | 4 | 2 | 1 | 0.29 | 1,695,000 | 1,635,000 | 106 | 6/14/13 |
| 82 WINTHROP DR | CAPECOD | 2312 | 1950 | 2012 | 4 | 3 | 1 | 0.64 | 1,775,000 | 1,675,000 | 87 | 6/24/13 |
| 41 SUMMIT RD | COLONIL | 3164 | 1952 | 1998 | 5 | 3 | 1 | 0.295 | 1,749,000 | 1,749,000 | 16 | 6/28/13 |
| 3 ELIZABETH LN | COLONIL | 4500 | 2012 | | 4 | 4 | 1 | 0.22 | 1,895,000 | 1,850,000 | 500 | 6/12/13 |
| 23 RIVERSIDE LN | COLONIL | 4300 | 2011 | | 5 | 4 | 1 | 0.21 | 1,895,000 | 1,880,000 | 35 | 6/25/13 |
| 5 DORCHESTER LN | COLONIL | 4070 | 1950 | 2001 | 5 | 3 | 1 | 0.31 | 2,095,000 | 2,095,000 | 34 | 6/14/13 |
| 31 LOCKWOOD RD | COLONIL | 4090 | 1997 | 2012 | 5 | 4 | 1 | 0.33 | 2,149,000 | 2,100,000 | 65 | 6/21/13 |
| 62 WESSKUM WOOD RD | COLONIL | 4840 | 1936 | 2000 | 5 | 4 | 2 | 0.34 | 2,550,000 | 2,305,000 | 51 | 6/17/13 |
| 19 TERRACE AV | ENGLMNR | 3842 | 1927 | 2005 | 5 | 4 | 1 | 0.28 | 2,490,000 | 2,350,000 | 278 | 6/26/13 |
| 119 LOCKWOOD RD | COLONIL | 4665 | 1946 | 2010 | 5 | 5 | 1 | 0.34 | 2,795,000 | 2,715,000 | 142 | 6/14/13 |
| 3 MARKS RD | COLONIL | 5073 | 1913 | 2002 | 6 | 4 | 1 | 0.4 | 2,895,000 | 2,820,000 | 70 | 6/28/13 |
| 24 MARKS RD | COLONIL | 5549 | 2011 | | 5 | 4 | 1 | 0.28 | 3,225,000 | 2,900,000 | 42 | 6/14/13 |
| 85 INDIAN HEAD RD | COLONIL | | 1903 | | 3 | 2 | | 1.79 | 3,195,000 | 3,195,000 | 17 | 6/20/13 |
| 76 MEADOW RD | SHLSTYL | 7203 | 2008 | | 6 | 7 | 3 | 0.91 | 5,985,000 | 5,600,000 | 232 | 6/5/13 |

June 2013 Single Family Homes Sold: Old Greenwich

| Address | Style | SqFt | YrBlt | YrRnv | Bds | FBths | HBths | Ac | List Price | Sale Price | DOM | CD |
|----------------------|---------|------|-------|-------|-----|-------|-------|-------|------------|------------|-----|---------|
| 10 WEBB AV | COLONIL | | 1904 | | 4 | 2 | | 0.21 | 839,000 | 800,000 | 225 | 6/13/13 |
| 81 HALSEY DR | CAPECOD | 1502 | 1951 | 2000 | 4 | 2 | | 0.17 | 919,000 | 875,000 | 169 | 6/7/13 |
| 13 MORTIMER DR | COLONIL | 1617 | 1921 | 2013 | 3 | 1 | 1 | 0.12 | 1,050,000 | 1,070,000 | 51 | 6/28/13 |
| 25 LINCOLN AV | COLONIL | 1691 | 1927 | 2000 | 3 | 1 | 1 | 0.16 | 1,120,000 | 1,130,000 | 466 | 6/14/13 |
| 8 ROOSEVELT AV | SHLSTYL | 1435 | 1908 | 2002 | 3 | 1 | 1 | 0.17 | 1,295,000 | 1,295,000 | 8 | 6/1/13 |
| 29 LOCKWOOD DR | SHORCOL | 2058 | 1914 | 1989 | 4 | 2 | 1 | 0.27 | 1,380,000 | 1,340,000 | 17 | 6/28/13 |
| 21 SHORE ACRE DR | COLONIL | 2162 | 1947 | | 3 | 1 | 1 | 0.19 | 1,275,000 | 1,357,000 | 10 | 6/7/13 |
| 312 SOUND BEACH AV | COLONIL | 2256 | 1922 | 2012 | 3 | 2 | 1 | 0.23 | 1,749,000 | 1,749,000 | 43 | 6/24/13 |
| 5 GRANT AV | COLONIL | 3052 | 1924 | 2011 | 4 | 3 | | 0.32 | 1,875,000 | 1,750,000 | 192 | 6/7/13 |
| 30 SUNSET RD | CAPECOD | 1807 | 1946 | 2013 | 3 | 2 | 1 | 0.28 | 2,195,000 | 2,050,000 | 55 | 6/21/13 |
| 41 HARDING RD | COLONIL | 5319 | 1990 | 2010 | 4 | 5 | 1 | 0.24 | 2,180,000 | 2,085,000 | 50 | 6/14/13 |
| 36 HIGHVIEW AV | VICTORN | 3343 | 1900 | 2011 | 5 | 2 | 1 | 0.238 | 2,395,000 | 2,225,000 | 58 | 6/5/13 |
| 11 PLEASANT VIEW PL | | 4915 | 1952 | 2012 | 6 | 7 | 1 | 0.62 | 2,375,000 | 2,375,000 | 18 | 6/24/13 |
| 47 ARCADIA RD | COLONIL | 3304 | 1915 | 2006 | 5 | 4 | 1 | 0.21 | 2,395,000 | 2,510,000 | 8 | 6/24/13 |
| 64 HILLCREST PARK RD | VICTORN | 8300 | 1901 | 1992 | 7 | 4 | 2 | 1.11 | 3,195,000 | 2,965,000 | 160 | 6/6/13 |
| 41 MEADOWBANK RD | SEE/RMK | 4847 | 1955 | 2011 | 5 | 4 | 2 | 1.02 | 9,500,000 | 8,100,000 | 435 | 6/10/13 |

June 2013 Condos and Co-Ops Sold: All of Greenwich

| Address | Style | SqFt | YrBlt | YrRnv | Bds | FBths | HBths | Ac | List Price | Sale Price | DOM | CD |
|----------------------------|---------|------|-------|-------|-----|-------|-------|----|------------|------------|-----|---------|
| 4 LAFAYETTE CT # 1AA | TUDOR | 625 | 1928 | | 1 | 1 | | | 158,000 | 150,000 | 230 | 6/4/13 |
| 30 PUTNAM PARK | COLONIL | | 1950 | 2005 | 1 | 1 | | | 349,000 | 349,000 | 143 | 6/21/13 |
| 1535 E PUTNAM AV # 402 | FEDERAL | 905 | 1975 | 2012 | 2 | 1 | | | 379,500 | 365,625 | 270 | 6/17/13 |
| 51 OLD KINGS HWY # 1 | CONTEMP | 905 | 1986 | 2009 | 2 | 2 | | | 469,000 | 440,000 | 99 | 6/12/13 |
| 351 PEMBERWICK RD # 921 | CONTEMP | 1133 | 1991 | | 2 | 2 | | | 485,000 | 465,000 | 82 | 6/13/13 |
| 89 PUTNAM PARK # 89 | COLONIL | | 1950 | 2011 | 2 | 2 | | | 485,000 | 500,000 | 93 | 6/18/13 |
| 165 PUTNAM PARK # 165 | COLONIL | 1700 | 1950 | 2006 | 3 | 2 | | | 525,000 | 500,000 | 74 | 6/27/13 |
| 76 PUTNAM PARK # 76 | GEOGCOL | | 1950 | 2001 | 3 | 2 | | | 545,000 | 520,000 | 80 | 6/10/13 |
| 84 WEAVER ST # C | TWNHSE | 1655 | 2004 | | 2 | 2 | 2 | | 620,000 | 580,000 | 37 | 6/28/13 |
| 72 GREENWICH HILLS DR # 72 | COLONIL | 1544 | 1976 | | 3 | 2 | 1 | | 669,000 | 635,000 | 131 | 6/19/13 |
| 25 W ELM ST # 57 | GEOGCOL | 1373 | 1938 | 2010 | 2 | 2 | | | 780,000 | 680,000 | 119 | 6/26/13 |
| 303 RIVER WEST # 303 | TWNHSE | 2400 | 1981 | 2005 | 3 | 3 | 1 | | 700,000 | 698,000 | 44 | 6/18/13 |
| 69 RIVERDALE AV # 204 | TWNHSE | 2400 | | | 2 | 2 | 2 | | 699,000 | 699,000 | 92 | 6/21/13 |
| 17 E LYON FARM DR # 17 | TWNHSE | 1836 | 1974 | 1996 | 3 | 3 | | | 755,000 | 740,000 | 745 | 6/17/13 |
| 69 RIVERDALE AV # 503 | TWNHSE | 2400 | | | 2 | 2 | 1 | | 749,000 | 754,000 | 66 | 6/26/13 |
| 73 WEAVER ST # 16 | GEOGCOL | 3507 | 1989 | | 3 | 3 | 1 | | 950,000 | 825,000 | 524 | 6/28/13 |
| 20 CHURCH ST # B54 | HIRISE | 1640 | 1948 | 2007 | 3 | 2 | | | 835,000 | 835,000 | 189 | 6/28/13 |
| 11 LAFAYETTE CT # 6-C | HIRISE | 1305 | 1930 | | 2 | 2 | | | 849,000 | 849,000 | 22 | 6/12/13 |
| 1 E LYON FARM DR # 1 | CONTEMP | 2074 | 1973 | | 3 | 2 | 1 | | 1,175,000 | 1,133,578 | 11 | 6/18/13 |
| 186 FIELD POINT RD # 6A | COLONIL | 3300 | 1989 | 2006 | 5 | 4 | 1 | | 1,295,000 | 1,162,500 | 416 | 6/14/13 |
| 302 W LYON FARM DR # 302 | CONTEMP | 2629 | 1976 | 2011 | 4 | 3 | | | 1,395,000 | 1,350,000 | 76 | 6/26/13 |
| 77 SHERWOOD PL # B | TWNHSE | 2999 | 2007 | | 3 | 3 | 1 | | 1,499,000 | 1,375,000 | 251 | 6/11/13 |
| 1 IDAR CT | | 3572 | 2005 | 2006 | 3 | 3 | 1 | | 1,899,000 | 1,800,000 | 356 | 6/27/13 |
| 1 MILBANK AV # 4C | CONTEMP | 2508 | 1985 | 2005 | 2 | 2 | | | 1,995,000 | 1,950,000 | 16 | 6/14/13 |
| 56 SOUND VIEW DR # B | SHLSTYL | 4006 | 2009 | | 4 | 4 | 1 | | 2,195,000 | 2,075,000 | 223 | 6/13/13 |

This report is based on data generated by Greenwich MLS. Property and statistical data is solely for your personal, non-commercial use and is deemed reliable but not guaranteed. All representations and warranties regarding the information are disclaimed. Reproduction or any other use is prohibited.