

60 Biltmore Avenue, Asheville, NC 28801 tel: 828.707.9556 fax: 800.553.1491

WWW.MYMOAICREALTY.COM



# 39 WRIGHT FARM ROAD

Beautiful Mountain-View Home

3 Bedrooms, 2.5 Bathrooms  
3,135 Square Feet, .96 Acres  
\$400,000 MLS #3144350



**MOSAIC**  
COMMUNITY LIFESTYLE REALTY

Home Information Packet  
39 Wright Farm Rd.  
Candler 28715



## INFO:

39 Wright Farm Road Candler, NC 28715

3 Bedrooms, 2.5 Bathrooms

3,135 Square Feet, .96 Acres

\$400,000 MLS #3144350

## FEATURES:

- Country home with short and long range mountain views
- 20 minutes from downtown Asheville
- Creek crossing and pastures lining the approach
- Gourmet kitchen with granite counters, lots of cabinetry and storage
- Built-in office with granite counters in kitchen
- White oak hardwood floors throughout main floor living area, ceramic tile in master bath
- Great natural light with tons of windows
- Vaulted ceilings in living room and 9 foot ceilings on the rest of main floor
- Propane fireplace with marble hearth and media built-ins
- Linen closet in interior hallway
- Ceiling fans in master bedroom and living room
- Oil-rubbed bronze fixtures and finishes
- Double-pane windows
- Master bedroom suite with large private bath and walk-in closet
- Master bath has walk-in custom tile shower, river rock floor, jetted tub with mountain views
- Second half bathroom with hardwood floors, ceramic pedestal sink, and linen closet
- Low-maintenance Hardi board siding
- Large back deck off of dining (34 x 11.7)
- Large covered rocking chair front porch (34.5 x 6.7) has slate steps leading from the front yard, wrought iron railing
- Stunning mountain views
- Semi-open floor plan with living room opening to breakfast nook
- Storage closet and large utility closet off of bonus room



- Living- (19.4 x 11.6) has vaulted ceilings
- Breakfast nook- (8.9 x 8.8) opens to the kitchen and living room
- Dining- (13.8 x 11.5) has French doors to back deck, connects to kitchen
- Master bedroom on main- (15.6 x 15.6) has front-facing mountain views
- Second bedroom on main- (12.7 x 9.1) has front-facing mountain views
- 2-car garage (27.3 x 21)
- Bonus room (18.8 x 16.6) on lower level great for pool table
- Laundry room with ceramic tile, washer/dryer hookup and utility sink (14.0 x 10.5)
- Lower level bedroom 3 (14 x 12.6) with French doors facing the mountains
- Lower level bedroom 4 (12.9 x 12.4) with large closet and beautiful mountain views
- Linen closet in lower level hallway
- Lower level full bath has ceramic tile floors, storage and a tub/shower combo
- Zoned system, 2 units, heat pump with propane back up in upstairs unit
- Asphalt drive
- Architectural shingles
- Concrete block foundation faced with stone
- Split rail fenced-in back yard
- Mature landscaping



# SIGNATURE PHOTOS



Vaulted Ceiling in Living Room



Fireplace w/ Marble Hearth



Gleaming Hardwood Floors



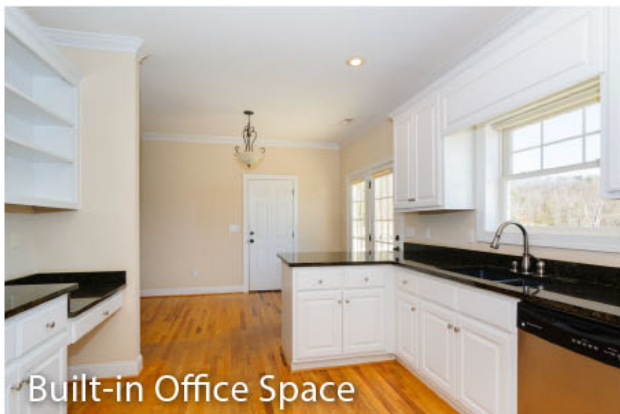
Dining - French Doors Lead to Deck



Oil-Rubbed Bronze Fixture



Kitchen w/ Granite Countertops



Built-in Office Space



Kitchen Connects to Dining Room

**WRIGHT FARM ROAD**

Beautiful Mountain-View Home

39 Wright Farm Road

Candler, NC 28715



# SIGNATURE PHOTOS



Breakfast Nook with Access to Deck



Master with Mountain Views



Jetted Tub in Master Bathroom



Bedroom 2 with Hardwoods



Bedroom 3 with Large Closet



Bedroom 4 with French Doors



Large Bonus Room



Full Bath on Lower Level

## WRIGHT FARM ROAD

Beautiful Mountain-View Home

39 Wright Farm Road

Candler, NC 28715



**MOSAIC**  
COMMUNITY LIFESTYLE REALTY

60 Biltmore Avenue, Asheville, NC 28801 tel: 828.707.9556 fax: 800.553.1491

WWW.MYMOSAICREALTY.COM

# SIGNATURE PHOTOS



Half Bath on Main Level



Rocking Chair Front Porch



Back Deck for Entertaining



Two-Car Garage & Asphalt Drive



Long Range Mountain Views



Spilt-Rail Fenced-in Backyard



Amazing Fall Foliage



Stunning Country Home

**WRIGHT FARM ROAD**

Beautiful Mountain-View Home

39 Wright Farm Road

Candler, NC 28715



**MOSAIC**  
COMMUNITY LIFESTYLE REALTY

60 Biltmore Avenue, Asheville, NC 28801 tel: 828.707.9556 fax: 800.553.1491

WWW.MYMOSAICREALTY.COM

# REQUEST A SHOWING



To schedule a showing of this home, please contact:

**Mike Figura**

**Direct 828.337.8190**

**Email: [Mike@MyMosaicRealty.com](mailto:Mike@MyMosaicRealty.com)**

## DIRECTIONS:

From downtown, take I-240 W toward I-40. From I-40 W, take exit 44 onto US-19/US-23 toward W Asheville, Enka-Candler. Turn right onto Smokey Park Highway. In 3 miles, turn right onto Dogwood Rd. In 2.3 miles, take a slight right turn onto Hookers Gap Road. In about a mile, turn right onto Wright Farm Road. The home will be on the right just up the hill.

**WRIGHT FARM ROAD**

**Beautiful Mountain-View Home**

39 Wright Farm Road

Candler, NC 28715