

60 Biltmore Avenue, Asheville, NC 28801 tel: 828.707.9556 fax: 800.553.1491

WWW.MYMOAICREALTY.COM



6 PINECROFT PLACE

North Asheville
Renovated Charmer

3 Bedrooms, 2 Bathrooms
1,647 Square Feet, .34 Acres
\$300,000 MLS #3152864



MOSAIC
COMMUNITY LIFESTYLE REALTY

Home Information Packet
6 Pinecroft Place
Asheville 28804



INFO:

6 Pinecroft Place, Asheville NC 28804
3 Bedrooms, 2 Bathrooms
1,647 Square Feet, .34 Acres
\$300,000 MLS #3152864

FEATURES:

- Renovated! All updated work was permitted and inspected
- Charming, low-maintenance, private gravel road with only a few homes sharing access
- Priced at recent appraisal
- Coveted area of Beaverdam Valley in North Asheville
- Minutes to the Blue Ridge Parkway up Web Cove Road, miles and miles of trails
- Flexible floor plan for 3 or 4 bedrooms
- Floors are all new or refinished hardwood
- 5 minutes to Merrimon Ingles, 15 minutes to Downtown
- Asheville City School district, Ira B Jones Elementary 5 minutes away
- New electric water heater and gas furnace
- 2 new bathrooms with tile floors, new fixtures, bright and clean
- Master/Den bathroom has large glass shower, double sinks, water closet
- Walk-in Master/Den closet has new laundry hook-ups on main level
- Master/Den has wood stove insert for those chilly nights
- Small covered side porch off Master/Den
- Large abundant windows for great natural light in all rooms
- Shady front yard with picket fence, great for pups
- All new kitchen with plentiful cabinet storage, granite countertops, stainless steel appliances
- This home is turn-key move-in ready for new owners to enjoy Springtime in Asheville!



PRIVATE, EVEN IN WINTER

PINECROFT
North Asheville
Renovated Charmer
6 Pinecroft Place
Asheville, NC 28804



SIGNATURE PHOTOS



Light-filled Living Room



Living Flows into Kitchen and Den



Refinished and New Flooring



Beautiful Gourmet Kitchen



Brand New Everything



Den or Master Bedroom - New Floors

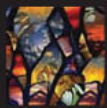


Woodstove and Large Window



Pocket Doors Close it Off from Living

PINECROFT
North Asheville
Renovated Charmer
6 Pinecroft Place
Asheville, NC 28804



SIGNATURE PHOTOS



Spacious Master Bath - 2 Sinks



Two Windows - Glass Shower



Laundry in Master Closet



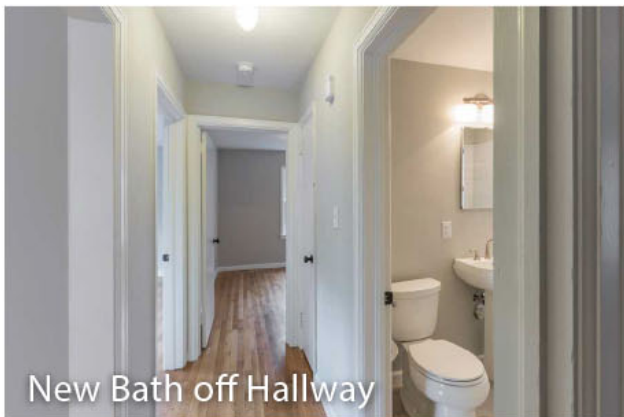
1 of 3 Bedrooms - Original Paneling



Front Corner Bedroom



Back Corner Bedroom

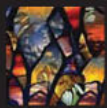


New Bath off Hallway



Full Bath - Light and Bright

PINECROFT
North Asheville
Renovated Charmer
6 Pinecroft Place
Asheville, NC 28804



MOSAIC
COMMUNITY LIFESTYLE REALTY

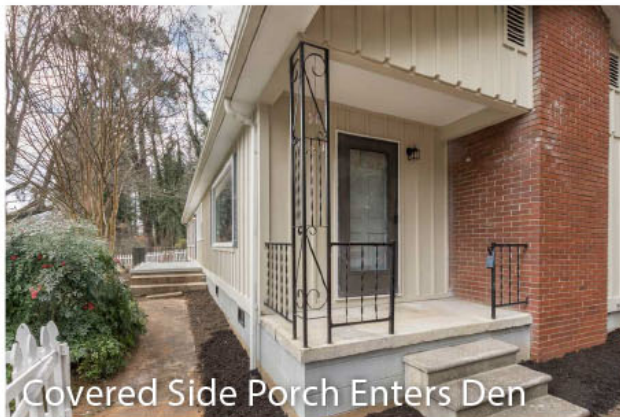
60 Biltmore Avenue, Asheville, NC 28801 tel: 828.707.9556 fax: 800.553.1491

WWW.MYMOAICREALTY.COM

SIGNATURE PHOTOS



Fully Fenced Front Yard



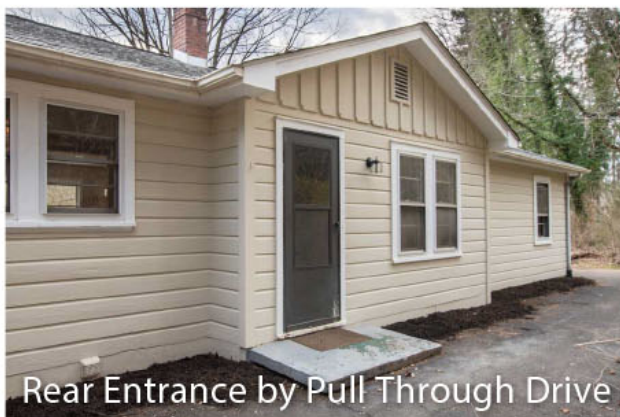
Covered Side Porch Enters Den



5 Minutes to Merrimon



Pull Through Driveway



Rear Entrance by Pull Through Drive



Charming, Peaceful Setting



Turn Key and Ready to Call Home

PINECROFT
North Asheville
Renovated Charmer
6 Pinecroft Place
Asheville, NC 28804



MOSAIC
COMMUNITY LIFESTYLE REALTY

60 Biltmore Avenue, Asheville, NC 28801 tel: 828.707.9556 fax: 800.553.1491

WWW.MYMOSAICREALTY.COM

REQUEST A SHOWING



To schedule a showing of this home, please contact:

Craig Severance

Direct 828.713.3757

Email: Craig@MyMosaicRealty.com

DIRECTIONS:

From Downtown: Merrimon Ave. to right on Beaverdam (at Ingles), continue 2.3 miles to left on Pinecroft, cross the bridge. Pinecroft Place is the first gravel road on right. #6 is first house on the left.

PINECROFT
North Asheville
Renovated Charmer
6 Pinecroft Place
Asheville, NC 28804