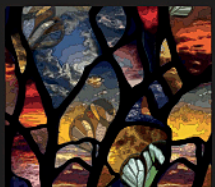




39 FINALEE AVENUE
Kenilworth • Brand New Custom-Built Home



MOSAIC
COMMUNITY LIFESTYLE REALTY

3 Bedrooms, 2.5 Bathrooms
1,958 Square Feet, 0.16 Acres
1,178 Unfinished/Framed Basement
MLS# 3184823



INFO:

39 Finalee Avenue, Asheville, NC 28803

3 Bedrooms, 2.5 Bathrooms

1,958 Square Feet • 1,178 SF Unfinished/Framed Basement

0.16 Acres

MLS #3184823

FEATURES:

- Fabulous Kenilworth Location
- Overlooks Biltmore Village
- Street Lined with Other New Construction Homes and Historic Homes
- Brand New Custom Built Construction
- Stainless Steel Appliances and Granite Countertops
- Beautiful Woodworking Throughout Home
- Hardwood and Tile Flooring
- Plenty of Closet Space and Storage
- Basement Ready for Expansion - Framed and Ready to Go
- Efficient Zoned HVAC System
- Beautiful Master Suite on Main
- Vaulted Ceilings in Main Living Area and Master Bedroom
- Relaxing Covered Front Porch
- Double Deck off the Back

Brand new construction in beautiful Kenilworth, complete with views of the mountains and Biltmore Village. This home boasts 3 bedrooms and 2.5 baths plus a full basement ready and framed for future expansion. Relaxing covered front porch and double decks in the back. Features include custom woodworking, beautiful vaulted ceilings, high-end kitchen, separate dining room, breakfast nook, and open floor plan. Conveniently located minutes to downtown Asheville and all of the amenities that central Asheville has to offer.



DOUBLE DECKS - TOP DECK OVERLOOKS BILTMORE VILLAGE

FINALEE
Kenilworth
New Construction
39 Finalee Avenue
Asheville, NC 28803



SIGNATURE PHOTOS



Welcome Home to 39 Finalee



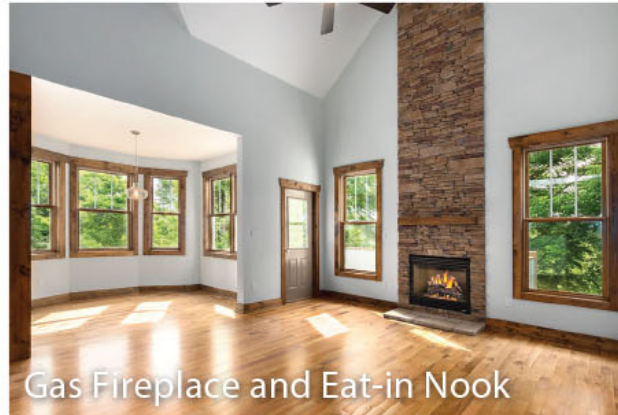
Fabulous Open Floorplan



Vaulted Ceilings



Beautiful Hardwood Floors and Trim



Gas Fireplace and Eat-in Nook



Dining Room and Eat-in Kitchen



Gorgeous Kitchen



Granite and Stainless in Kitchen

FINALEE
Kenilworth
New Construction
39 Finalee Avenue
Asheville, NC 28803



SIGNATURE PHOTOS



Master Suite on Main



Frameless Glass Shower Doors



Double Vanity and Large Closet



Two Bedrooms Upstairs



Solid Wood Doors Throughout



Lovely Upstairs Bathroom



Another View of Upstairs Bath



Pretty Woodwork - Vaulted Ceilings

FINALEE
Kenilworth
New Construction
39 Finalee Avenue
Asheville, NC 28803



SIGNATURE PHOTOS



Custom Built-Ins in Upstairs Foyer



Main Level Half Bath



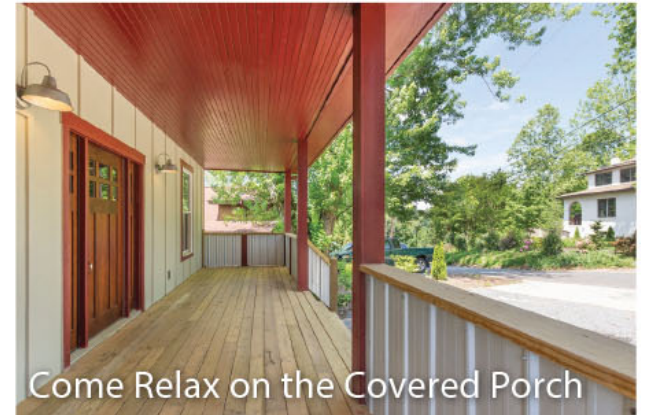
Basement Ready for Expansion



Fully Framed - 1,178 Square Feet



Double Decks - Deck off Basement



Come Relax on the Covered Porch



Brand New Custom Construction

FINALEE
Kenilworth
New Construction
39 Finalee Avenue
Asheville, NC 28803



MOSAIC
COMMUNITY LIFESTYLE REALTY

60 Biltmore Avenue, Asheville, NC 28801 tel: 828.707.9556 fax: 800.553.1491

WWW.MYMOSAICREALTY.COM

REQUEST A SHOWING



To schedule a showing of this home, please contact:

Megan Shook

Direct 828.450.6797

Email: Megan@MyMosaicRealty.com

BIKING/DRIVING DIRECTIONS:

From downtown Asheville, head south on Biltmore Avenue for less than 2 miles, turn left on Kenilwood Place, turn left on Finalee Avenue. Home will be on your right.

FINALEE

Kenilworth

New Construction

39 Finalee Avenue
Asheville, NC 28803