



146 BLANTON STREET

Central Asheville • Updated Bungalow



MOSAIC
COMMUNITY LIFESTYLE REALTY

5 Bedrooms, 2.5 Bathrooms
2,023 Square Feet, 0.14 Acres
MLS #3167864



INFO:

146 Blanton Street, Asheville, NC 28801

5 Bedrooms, 2.5 Bathrooms

2,023 Square Feet • 0.14 Acres

MLS #3167864

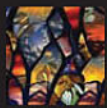
FEATURES:

- Updated 1920's Bungalow with original charm intact
- Walkable/bikeable in trendy central Asheville south slope location
- Larger than it looks with 5 bedrooms and 2.5 bathrooms
- Charming rocking chair front porch
- Beautiful hardwood floors
- Excellent natural light
- Wood-burning fireplace
- Well-appointed paint colors
- Built-ins throughout home
- Lovely kitchen with brand new stainless steel appliances
- French doors from living room into dining room
- Pass-through from kitchen to dining room
- Plenty of dining space with a dining room and eat-in kitchen
- Breakfast nook in kitchen has charming arched doorway
- Updated baths - master has original clawfoot tub and dual vanity
- Deck access from master bedroom
- Great entertaining deck with two levels
- Nice, flat, fenced-in yard - perfect for play or pets
- Exterior storage building



BACK DECKS ARE PERFECT FOR RELAXING AND ENTERTAINING

BLANTON
Central Asheville
Updated Bungalow
146 Blanton Street
Asheville, NC 28801



SIGNATURE PHOTOS



Bright Living Room



Wood-Burning Fireplace



Great Natural Light



French Doors Lead to Dining Room



Formal Dining Area



Beautifully Updated Kitchen

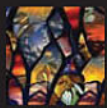


Stainless Appliances



Archway into Cute Breakfast Nook

BLANTON
Central Asheville
Updated Bungalow
146 Blanton Street
Asheville, NC 28801



MOSAIC
COMMUNITY LIFESTYLE REALTY

60 Biltmore Avenue, Asheville, NC 28801 tel: 828.707.9556 fax: 800.553.1491

WWW.MYMOAICREALTY.COM

SIGNATURE PHOTOS



Open Pass-Through to Dining Room



Main Level Master with Deck Access



Master Bath with Clawfoot Tub



Lovely Built-in Cabinets



Wood Floors Throughout Home



Office/ Second Bedroom on Main

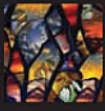


Updated Main Floor Bath



Upstairs Sitting Area/Landing

BLANTON
Central Asheville
Updated Bungalow
146 Blanton Street
Asheville, NC 28801



SIGNATURE PHOTOS



Another View of Landing Area



Upstairs Bedroom 1



Bedroom 2 w/ Clerestory Window



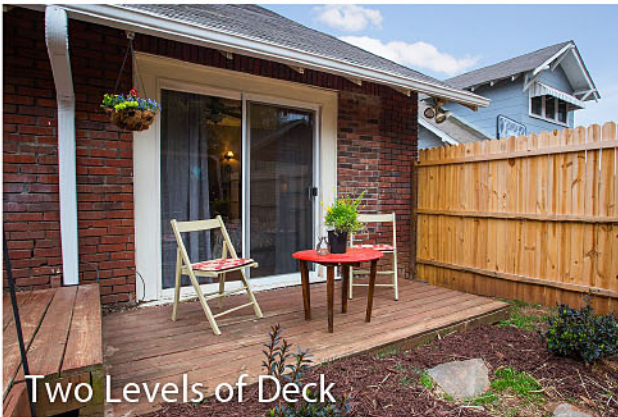
Upstairs Half Bath



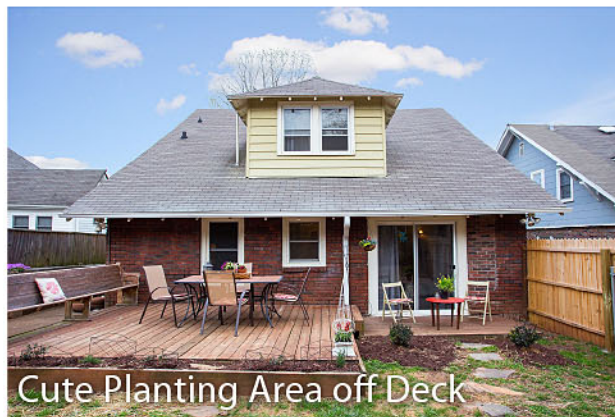
Great Yard for Kids or Pets



Privacy Fencing

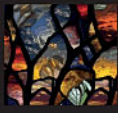


Two Levels of Deck



Cute Planting Area off Deck

BLANTON
Central Asheville
Updated Bungalow
146 Blanton Street
Asheville, NC 28801



MOSAIC
COMMUNITY LIFESTYLE REALTY

60 Biltmore Avenue, Asheville, NC 28801 tel: 828.707.9556 fax: 800.553.1491

WWW.MYMOSAICREALTY.COM

REQUEST A SHOWING



To schedule a showing of this home, please contact:

Eric Albee

Direct 828.712.9395

Email: Eric@MyMosaicRealty.com

DRIVING/BIKING DIRECTIONS:

From Downtown Asheville head South to the bottom of Ashland Ave.
At the light take a Right on Phifer St. and then First Left on Blanton Ave.
146 Blanton will be on your Right.

BLANTON
Central Asheville
Updated Bungalow
146 Blanton Street
Asheville, NC 28801