

60 Biltmore Avenue, Asheville, NC 28801 tel: 828.707.9556 fax: 800.553.1491

WWW.MYMOAICREALTY.COM



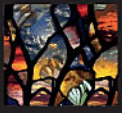
42 AZURE SAGE WAY

Custom Arts & Crafts Home

\$449,000 • 3,440 Sq Ft • .28 Acres
6 Bedrooms, 3 Bathrooms
MLS# 579862

MOSAIC
COMMUNITY LIFESTYLE REALTY

Home Information Packet
42 Azure Sage Way
Asheville, NC 28806



INFO:

42 Azure Sage Way, Asheville NC 28806

\$449,000

MLS # 579862

6 Bedroom (4 upstairs and 2 downstairs)

3 Bathroom (2 baths upstairs and 1 downstairs)

3-Car Garage plus Workshop

3,440 Square Feet (2,300 main level, 1,140 lower level)

0.28 Acre Lot

FEATURES:

- Breathtaking mountain views from front and back of the house
- Atrium in foyer brings outdoors inside with natural stone and a verdant array of exotic plants (Atrium already lined for an indoor pond)
- Flowing floor plan with plenty of space (2,300 sf on the main level and 1,140 on the lower level)
- Spacious double-layered, covered back deck off of living room and basement bedroom has gorgeous mountain views
- Upscale artistic touches throughout the house including 6 inch crown molding, archways separating dining from kitchen, coffered ceilings with lighting accents in living area and master suite, decorative fixtures, wrought iron stairway and bannister railing and faux leather interior walls in second bath and third bath
- Lots of large windows for great natural light
- Gourmet eat-in chef's kitchen with plenty of cabinets and counter space, granite countertops, Dewils' custom cabinetry with soft close dovetail doors, crown molding on cabinets, modern tile glass backsplash, under cabinet lighting, stainless appliances and breakfast bar
- Luxurious master suite on the main level with two walk-in closets, soaking tub with jets, separate tiled walk-in shower and a coffered ceiling with accent lights
- Durable construction materials used include hardi-plank siding (50-year warranty), stone siding, 30 year architectural shingle roof and a concrete driveway
- Stunning fireplace in the living room with floor to ceiling stone surround and custom wood mantle (fireplace is propane but also lined for wood)
- Red oak hardwood floors in main area of house
- Steam room and sauna for total relaxation
- Daylight walk-out basement includes 2 bedrooms, bathroom, steam room, sauna and laundry room
- 3-car garage with separate workshop offers plenty of space for tools, working and storage
- Central vacuum for cleaning convenience



BREATHTAKING, PANORAMIC MOUNTAIN VIEWS

ROOM DIMENSIONS

Living Room/Great Room- 19' x 17'

Dining Room- 13'8" x 11'6"

Breakfast room- 12' x 11'

Kitchen- 13'6" x 12'

Grilling porch- 24' x 10'

Master bedroom- 16'8" x 16'5"

Master bathroom- 16'8" x 12'

Second bedroom- 12'8" x 10'11"

Third bedroom- 11'7" x 11'5"

Fourth bedroom- 11'6" x 10'



SIGNATURE PHOTOS



Artistic Touches Throughout



Stone Atrium in Foyer



Grand Entryway



Floor-to-Ceiling Stone Fireplace



Coffered Ceiling w/ Accent Lighting



Gourmet Chef's Kitchen



Breakfast Bar in Kitchen



Plenty of Cabinetry & Workspace

AZURE SAGE WAY

Custom Arts & Crafts Home

42 Azure Sage Way

Asheville 28806



SIGNATURE PHOTOS



Dining Room w/ Red Oak Floors



Looking into Atrium



Master Suite w/ Coffered Ceiling



Master Bath w/ Two Walk-in Closets



Two Vanities in Master Bath



Main Level Bedroom Opens to Porch



Main Level Bedroom 3



Bedroom used as Office

AZURE SAGE WAY

Custom Arts & Crafts Home

42 Azure Sage Way

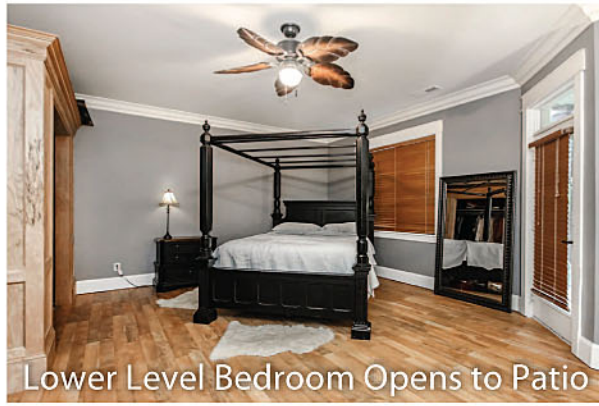
Asheville 28806



SIGNATURE PHOTOS



Upstairs Bath w/ Faux Leather Walls



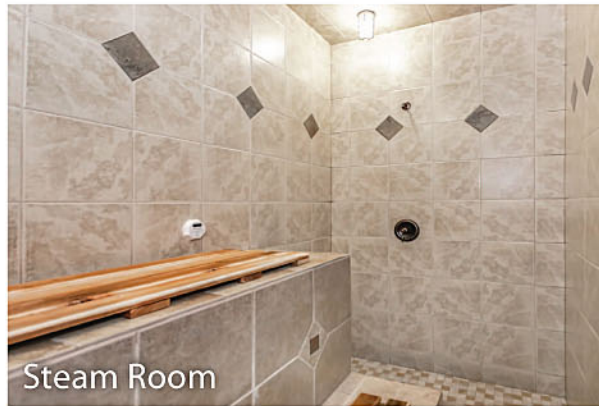
Lower Level Bedroom Opens to Patio



Lower Level Bathroom



Spa Room



Steam Room



Sauna off of Spa Room



Laundry Room



Three-Car Garage

AZURE SAGE WAY

Custom Arts & Crafts Home

42 Azure Sage Way

Asheville 28806



MOSAIC
COMMUNITY LIFESTYLE REALTY

60 Biltmore Avenue, Asheville, NC 28801 tel: 828.707.9556 fax: 800.553.1491
WWW.MYMOSAICREALTY.COM

SIGNATURE PHOTOS



Private Back Porch and Patio



Stone Entryway



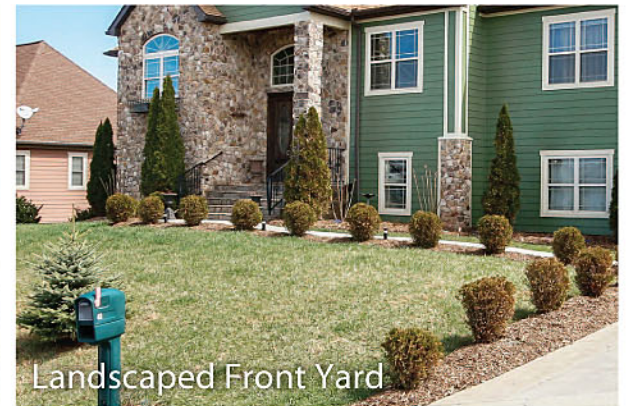
Concrete Drive w/ Huge Parking Area



Great Curb Appeal



Excellent Mountain Views



Landscaped Front Yard

AZURE SAGE WAY

Custom Arts & Crafts Home

42 Azure Sage Way
Asheville 28806



MOSAIC
COMMUNITY LIFESTYLE REALTY

60 Biltmore Avenue, Asheville, NC 28801 tel: 828.707.9556 fax: 800.553.1491

WWW.MYMOSAICREALTY.COM

FOR A PRIVATE VIEWING



To schedule a private viewing of this home, please contact:

Mike Figura

Direct: 828-337-8190

Email: Mike@MyMosaicRealty.com

DIRECTIONS:

From Asheville, take New Leicester Highway 7.2 miles and turn left on Silverling Drive. Right on Azure Sage Way. House is on the left with sign in the yard.

AZURE SAGE WAY

Custom Arts & Crafts Home

42 Azure Sage Way

Asheville 28806