



Settings & Changeover Module

MES BUILT ON IGNITION®

Expertly build, manage, and monitor machine settings with the Settings & Changeover Module. The Settings & Changeover Module is ideal for quickly and accurately changing machine or process settings. Improve efficiency, quality, and production control of your manufacturing facility with powerful master recipe and sub-recipe management, recipe security, changelog tracking, variance tracking, and more.

Master Recipe Functionality

Reduce the effort required to manage numerous recipes with master recipe functionality. When a master recipe setting is changed, it will replicate down to all of its sub-recipes while maintaining the specific values of each sub-recipe. With unlimited levels of master recipes, recipes can be organized in a hierarchical manner.

Recipe Editor

Managing recipes has never been easier using the built-in visual recipe editor. Create new recipes, read current values into a recipe, export and import recipes, manage security, select machines for recipes, and more.

Variance Log

Monitor machine settings and identify deviations in real-time to prevent quality, downtime, or other production issues. Machine settings changed at an operator interface terminal outside of the recipe management system are detailed in the variance log by production run or date range.

Features

- Master Recipe Functionality
- Recipe Editor
- Variance Log
- Role-Based Security
- Detailed Changelog
- Analysis and Reports
- OEE, SPC, and Trace Integration

Supported Operating Systems

- Windows Server 2008/2012/2016/2019
- Windows 7, 8, 10, or later
- Ubuntu Linux 12.04 or later
- Other Java SE enabled OSes*

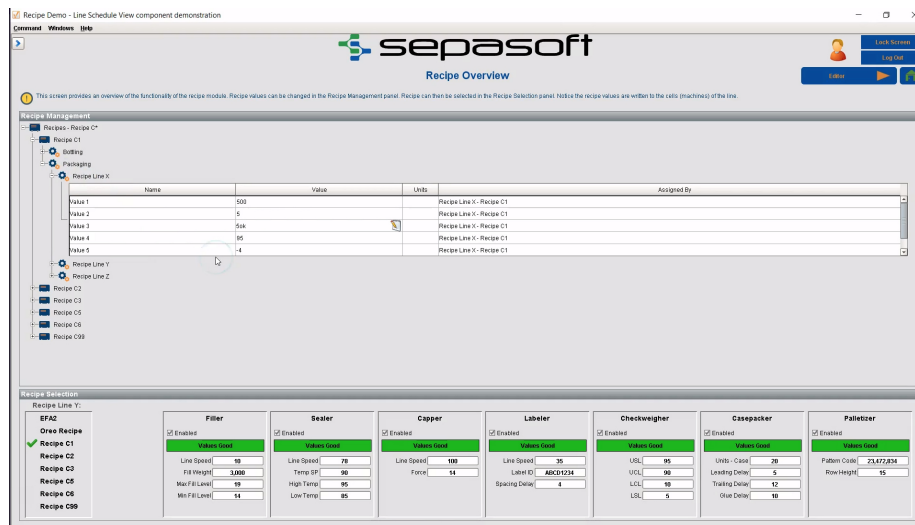
Requirements

- Ignition® Core Modules
- Java SE 8+ (server)
- Java SE 6, 7, 8, or 9 (client)
- Quad-core processor (32- or 64-bit)
- 8GB RAM minimum for Ignition® server
- 10GB free HD space
- (requirements vary by usage)

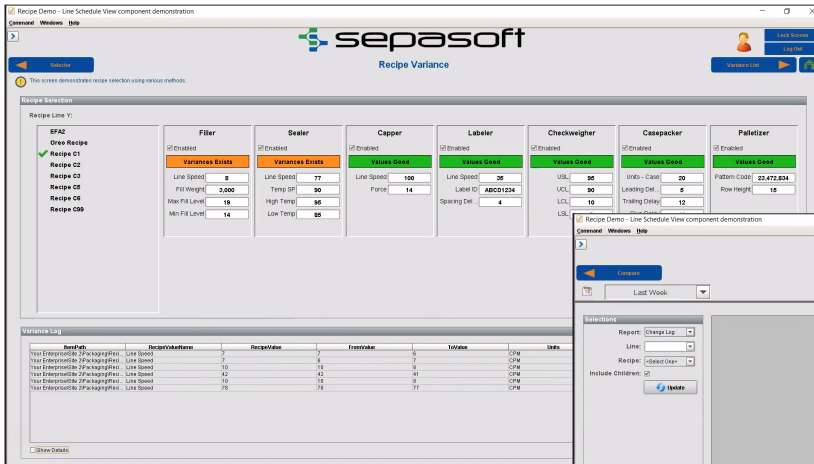
Supported Databases

- Microsoft® SQL Server
- MySQL
- Oracle
- Postgres

*Ignition® is compatible with any Java-enabled operating system. Full support is only offered for listed operating systems.



Managing Machine Settings on a Large Scale | Manage and quickly edit machine settings for a single machine, multiple production lines, and entire production areas.

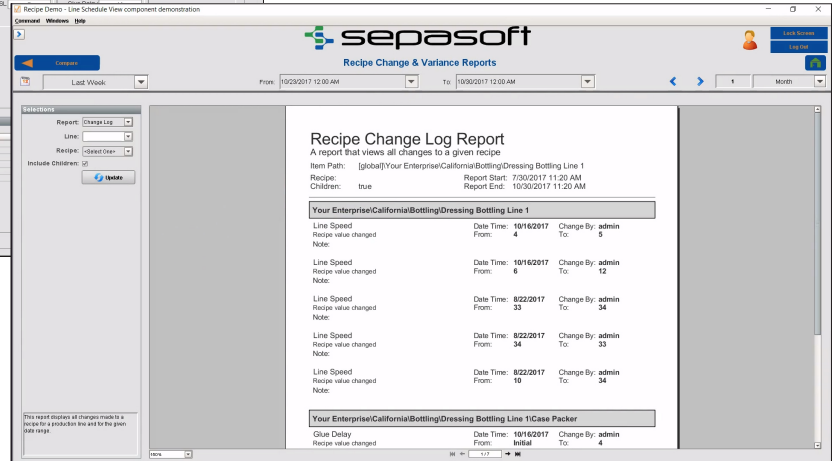
Recipe Variance

Recipe Line Y1:

Filter	Sealer	Capper	Labeler	Checkweigher	Casepacker	Palletizer
Line Speed: 8	Line Speed: 77	Line Speed: 100	Line Speed: 35	Line Speed: 95	Line Speed: 20	Line Speed: 15
Min Fill Level: 18	High Temp: 95	Force: 14	Label ID: ABC01234	Unit: 12	Unit: 12	Unit: 12
Min Fill Level: 14	Low Temp: 85					

Variance Log

Recipe	Recipe Name	Recipe	Recipe	Recipe	Recipe	Recipe
Your Enterprise/California/Bottling/Dressing Bottling Line 1	Line Speed	7	7	7	7	7
Your Enterprise/California/Bottling/Dressing Bottling Line 1	Line Speed	10	10	10	10	10
Your Enterprise/California/Bottling/Dressing Bottling Line 1	Line Speed	42	42	42	42	42
Your Enterprise/California/Bottling/Dressing Bottling Line 1	Line Speed	10	10	10	10	10
Your Enterprise/California/Bottling/Dressing Bottling Line 1	Line Speed	70	70	70	70	70



Recipe Change & Variance Reports

Report: Change Log

Recipe: Global/Your Enterprise/California/Bottling/Dressing Bottling Line 1

Report Start: 7/30/2017 11:20 AM

Report End: 10/30/2017 11:20 AM

Your Enterprise/California/Bottling/Dressing Bottling Line 1

Line Speed	Date Time	Change By
Recipe value changed	10/16/2017 4:00	admin
Recipe value changed	10/16/2017 6:00	admin
Recipe value changed	8/22/2017 33	admin
Recipe value changed	8/22/2017 34	admin
Recipe value changed	8/22/2017 34	admin
Recipe value changed	8/22/2017 10	admin

Your Enterprise/California/Bottling/Dressing Bottling Line 1 Case Packer

Line Speed	Date Time	Change By
Recipe value changed	10/16/2017 4:00	admin

Reporting Tools

Use flexible analysis & reporting tools to create reports on variance, machine settings comparisons, and more.

Role-Based Security

Limit deviations from standard machine settings by utilizing role-based security to define user roles and permissions. For example, grant the Maintenance role permission to change a setting from 0-100, while allowing the Operator role permission to only change the setting from 50-60.

Detailed Changelog

All changes made to any recipe are automatically recorded to help you meet challenges of regulatory compliance. Quickly zero in on significant changes with access to a complete audit trail evidencing the location, date, type of change, responsible person, and more.

Analysis and Reports

Identify trends and carry forward successful practices to future operations by analyzing unlimited amounts of past production data. Compare recipes, review recipe changelogs, monitor production-run variances, and more using built-in analysis tools.

OEE, SPC, & Trace Integration

In a production process that fully employs the MES Suite of modules, making a single product code selection sets recipe values, starts overall equipment effectiveness (OEE) tracking, collects statistical process control (SPC) samples, and provides complete traceability. Analyze real-time and historical recipe, efficiency, quality data, and more in one unified system.

Enterprise Integration

The Settings & Changeover Module is IT-friendly, allowing integration with enterprise resource planning (ERP) and other applications to share data and communicate seamlessly with the entire organization. Simplify the configuration process with automatic synchronization across multiple sites and servers.

Powered by Ignition

Save hours of customization by managing MES, SCADA, HMI, and more on a single platform with a unified operator interface and design tools.



For more information, please visit our Settings & Changeover product page:
www.sepasoft.com/products/settings-changeover