

# ASCO® Genitourinary Cancers Symposium

Wi-Fi Network: GU22  
No Password Required  
[gu.asco.org](https://gu.asco.org) | #GU22

## PROGRAM

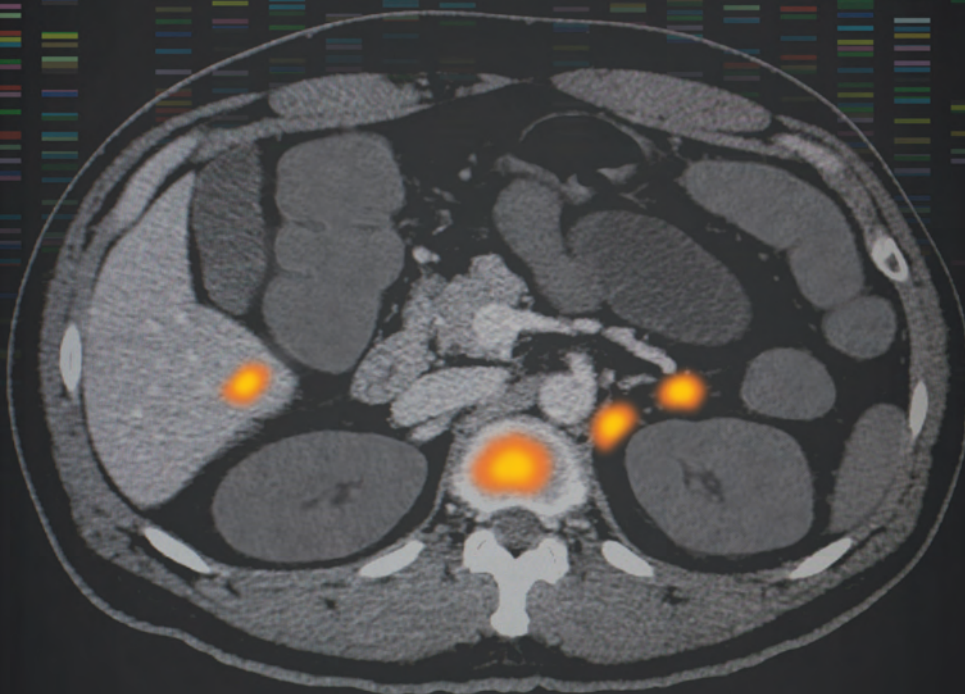
World-Class Science,  
Patient-Centered Care

February 17–19, 2022

Moscone West | San Francisco, CA | Online

FOR YOUR PATIENTS WITH ADVANCED PROSTATE CANCER

# WHY IS PSMA A KEY PHENOTYPIC BIOMARKER IN ADVANCED PROSTATE CANCER?



Prostate-specific membrane antigen (PSMA) is overexpressed in **>80%** of men with prostate cancer and can be detected by PSMA PET.<sup>1-3</sup>

PSMA is a diagnostic and potential therapeutic target, enabling a phenotypic precision medicine approach to treating advanced prostate cancer.<sup>1,4-6</sup>

Learn more at [www.PhenotypicPrecisionMedicine.com](http://www.PhenotypicPrecisionMedicine.com).



## References

**1.** Hupe MC et al. *Front Oncol.* 2018;8:623. **2.** Hope TA et al. *J Nucl Med.* 2017;58(12):1956-1961. **3.** Pomykala KL et al. *J Nucl Med.* 2020;61(3):405-411. **4.** Hofman MS et al. *Lancet.* 2020;395(10231):1208-1216. **5.** Müller J et al. *Eur J Nucl Med Mol Imaging.* 2019;46(4):889-900. **6.** Kratochwil C et al. *J Nucl Med.* 2016;57:1170-1176.

© 2020 Advanced Accelerator Applications | All Rights Reserved  
November 2020 | PSM-1237215



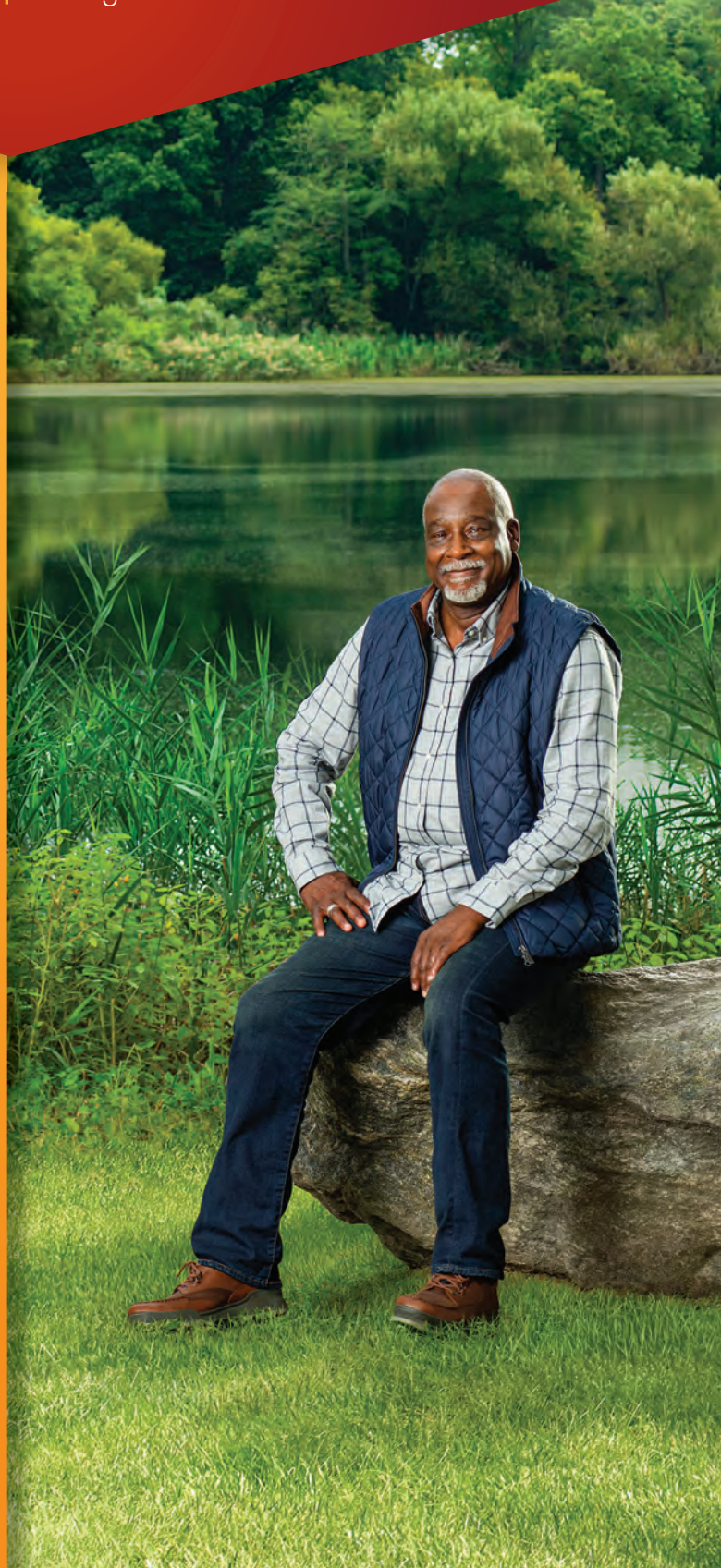
**Xtandi**<sup>®</sup>  
(enzalutamide)  
40 mg tablets | 80 mg tablets

VISIT  
**EXHIBIT 16**  
TO LEARN MORE  
ABOUT THE  
CLINICAL DATA  
FOR **XTANDI**  
ACROSS DIFFERENT  
PATIENT TYPES

**XtandiHCP.com**



© 2022 Astellas Pharma US, Inc. and Pfizer Inc.  
All rights reserved. 076-7567-PM 02/22  
XTANDI, Astellas, and the flying star logo are  
registered trademarks of Astellas Pharma Inc.





# CONTENTS

|   |    |
|---|----|
| Welcome                                     | 4  |
| Committees                                  | 5  |
| Merit Award Recipients                      | 6  |
| Continuing Education and Symposium Feedback | 6  |
| Maintenance of Certification                | 7  |
| Attendee Resources                          | 8  |
| Health and Safety                           | 10 |
| Ancillary Educational Events                | 11 |
| Industry Expert Theater                     | 12 |
| Program at a Glance                         | 13 |
| Program by Day                              | 16 |
| Exhibitor Directory                         | 25 |

SAVE THE DATE

## 2023 ASCO Genitourinary Cancers Symposium

February 16-18, 2023 | Moscone West | San Francisco, CA

# Welcome

From world-class science to patient-centered care, the 2022 ASCO Genitourinary (GU) Cancers Symposium offers new, innovative findings in the study, diagnosis, and treatment of GU malignancies. The Symposium will offer both an in-person and online experience. We are thrilled to welcome attendees to Moscone West in San Francisco, California, while simultaneously providing a robust online meeting for those joining us remotely.

Attendees can expect:

- ▶ An in-person experience featuring dynamic and interactive sessions, enhanced opportunities for face-to-face networking and collaboration, innovative in-person exhibits, and on-demand access to meeting materials.
- ▶ An online option that includes livestreamed general sessions and online posters, meeting materials, and the exhibitor directory.

For information on how to participate in the online meeting experience, please visit [meetings.asco.org](https://meetings.asco.org).

# Committees

## Program Committee

**Jason A. Efstathiou, MD, DPhil, FASTRO, FACRO—Chair**  
*Massachusetts General Hospital and Harvard Medical School*

**Christian Kollmannsberger, MD—Chair-Elect**  
*BC Cancer-Vancouver Cancer Center*

**Stephen A. Boorjian, MD—Immediate Past-Chair**  
*Mayo Clinic*

**Jamie von Roenn, MD, FASCO—Leadership**  
*ASCO*

**Andrea B. Apolo, MD**  
*National Cancer Institute, National Institutes of Health*

**Sam S. Chang, MD, MBA**  
*Vanderbilt University Medical Center*

**Felix Y. Feng, MD**  
*UCSF Helen Diller Family Comprehensive Cancer Center*

**Karim Fizazi, MD, PhD**  
*Gustave Roussy and University of Paris-Saclay*

**Jean H. Hoffman-Censits, MD**  
*The Sidney Kimmel Comprehensive Cancer Center at Johns Hopkins University*

**Peter Hoskin, MD, FRCP, FRCR**  
*Mount Vernon Cancer Center and University College London*

**Sophia C. Kamran, MD**  
*Massachusetts General Hospital*

**Bridget Koontz, MD**  
*GenesisCare*

**Todd Morgan, MD**  
*University of Michigan*

**Alicia Morgans, MD, MPH**  
*Dana-Farber Cancer Institute*

**Derya Tilki, MD**  
*Medical University Hamburg-Eppendorf, Martini-Klinik*

**Robert G. Uzzo, MD, MBA**  
*Fox Chase Cancer Center*

## Special thanks to the content advisors from the Radiological Society of North America

**Nicole Curci, MD**  
*University of Michigan*

**Antonio C. Westphalen, MD**  
*University of Washington*

## News Planning Team

**Robert Dreicer, MD, MS, MACP**  
*University of Virginia Cancer Center*

**Elizabeth R. Plimack, MD, MS**  
*Fox Chase Cancer Center*

**Mark T. Fleming, MD**  
*Virginia Oncology Associates*

# Conquer Cancer<sup>®</sup>, the ASCO Foundation, Merit Award Recipients

Conquer Cancer<sup>®</sup>, the ASCO Foundation, Merit Awards are designed to further promote quality clinical research by young scientists. A select number of Merit Awards are given annually to recognize outstanding research in abstracts submitted for presentation at the ASCO Genitourinary Cancers Symposium.

**Elio Adib, MD** Dana-Farber Cancer Institute and Brigham and Women's Hospital

**Bayan A. Al-Share, MD** Barbara Ann Karmanos Cancer Institute

**David J. Benjamin, MD** University of California, Irvine

**Nicolas Benziane, MD** Bergonie Institute

**Laura Bukavina, MD** University Hospitals, Cleveland Medical Center

**Neal S. Chawla, MD** City of Hope Comprehensive Cancer Center

**Hielke Martijn de Vries, MD** Netherlands Cancer Institute

**Nazli Dizman, MD** City of Hope Comprehensive Cancer Center

**Matthew S. Ernst, MD** University of Calgary

**Brendan J. Guercio, MD** Memorial Sloan Kettering Cancer Center

**Changchuan Jiang, MD, MPH** Roswell Park Cancer Center

**Adam M. Kase, MD** Mayo Clinic Florida

**Abhishek Kumar, MD** Duke University

**Michael Lattanzi, MD** Memorial Sloan Kettering Cancer Center

**Ting Martin Ma, MD, PhD** University of California, Los Angeles

**Luis A. Meza, MD** City of Hope Comprehensive Cancer Center

**Vishal Navani, MBBS, MRCP** University of Calgary

**Syed Arsalan Ahmed Naqvi, MBBS** Mayo Clinic

**Irbaz Bin Riaz, MBBS, MS** Dana-Farber Cancer Institute

**Ava Saidian, MD** University of California San Diego

**Nicolas Sayegh, MD** Huntsman Cancer Institute, University of Utah Health Care

**Kyrillus Shohdy, MBBS** The Christie NHS Foundation Trust

**Nicholas I. Simon, MD** Northwestern University

**Udit Singhal, MD** University of Michigan

**Qurat Ul Ain Riaz Sipra, MD** The University of Arizona Cancer Center

**Irene Tsung, MD** University of Michigan Health System

**Hong Truong, MD, MS** Memorial Sloan Kettering Cancer Center

**Wesley Yip, MD** Memorial Sloan Kettering Cancer Center

**Zeynep B. Zengin, MD** City of Hope Comprehensive Cancer Center

**Li Zhou, MD** Peking University Cancer Hospital and Institute

## Continuing Education and Symposium Feedback

### Accreditation and Designation Statement

In support of improving patient care, the American Society of Clinical Oncology is jointly accredited by the Accreditation Council for Continuing Medical Education (ACCME), the Accreditation Council for Pharmacy Education (ACPE), and the American Nurses Credentialing Center (ANCC) to provide continuing education for the healthcare team.

### AMA CREDIT DESIGNATION STATEMENT – PHYSICIANS

The American Society of Clinical Oncology designates this Other activity (blended live activity and enduring material) for a maximum of 25 *AMA PRA Category 1 Credit™*. Physicians should claim only the credit commensurate with the extent of their participation in the activity.

### AAPA/NCCPA CREDIT DESIGNATION STATEMENT – PHYSICIAN ASSISTANTS

Physician assistants may claim up to 25 Category 1 credits for completing this activity. NCCPA accepts *AMA PRA Category 1 Credit™* from organizations accredited by ACCME or a recognized state medical society.

All non-physician attendees are welcome to submit a request for a Certificate of Participation, which may enable non-physicians to apply their meeting participation toward re-licensure. Please note, however, that all final decisions regarding certificate acceptance will be made by the licensing organization to which the certificate is submitted.

### Conflict of Interest Disclosure

All financial relationships reported by contributors to this activity are provided to learners prior to the start of the activity. During planning and development of the activity, relevant financial relationships were mitigated for all contributors. Relationships are considered self-held and compensated unless otherwise noted (I = Immediate family member; Inst = My Institution). Disclosures are submitted per the ASCO Policy for Relationships with Companies ([asco.org/rwc](http://asco.org/rwc)).

Please email [coi@asco.org](mailto:coi@asco.org) with specific questions or concerns.



## Maintenance of Certification

Successful completion of this CME activity, which includes participation in the evaluation component, enables the participant to earn up to 25 Medical Knowledge MOC points in the American Board of Internal Medicine's (ABIM) Maintenance of Certification (MOC) program. It is the CME activity provider's responsibility to submit participant completion information to ACCME for the purpose of granting ABIM MOC credit.

Points will be awarded if the Meeting Feedback Form ([ceportal.asco.org](https://ceportal.asco.org)) is completed by the deadline (May 19, 2022) with detailed responses that demonstrate knowledge gained at the Symposium and how that knowledge may apply to practice.

# Attendee Resources

## Wi-Fi login instructions:

Network: GU22

No password required

Using Mi-Fi devices can negatively impact the attendee Wi-Fi experience. For the best experience for all attendees, please refrain from using your Mi-Fi device.

Use ASCO's new platform to:

- ▶ Take notes while you watch sessions
- ▶ Pose questions to faculty during sessions
- ▶ Respond to polls
- ▶ View downloadable slides and posters
- ▶ Access a dashboard to review and organize your notes

## Meeting Videos and Slides

On-demand versions of meeting videos (recordings of the sessions) and slides (downloadable slide decks) will be available to all attendees no later than 12 hours following each session at [meetings.asco.org](https://meetings.asco.org).

## Online Resources

The program guide, located at [meetings.asco.org](https://meetings.asco.org), is the all-in-one location for links to publications and planning tools, including:

- ▶ Interactive session tools
- ▶ Meeting videos and slides
- ▶ Abstracts, available for download
- ▶ Private messaging with speakers and fellow attendees
- ▶ Symposium Feedback Form, CE Request, and Certificate of Attendance

Attendees must use their **ASCO.org** username and password to log in to some online resources. If you need help retrieving your username and password, visit the ASCO Customer Service Desk in the Level 1 Lobby.

## Posters

On-demand access to posters, their videos, and corresponding slides (video and slide content is pending presenter submission) will be available to all attendees the morning of their session presentation at [meetings.asco.org](https://meetings.asco.org).

All posters, including online-only posters, can also be viewed at the Poster Viewing Stations in the Posters, Exhibits, and Food Room.

## Exhibits

ASCO encourages all attendees to visit the exhibits on Level 1 in the West Hall on Thursday from 7:00 AM to 6:45 PM and Friday from 7:00 AM to 6:15 PM. The exhibits offer an opportunity to extend your learning about the most advanced therapies, products, and services in GU cancer care. Visit [meetings.asco.org](https://meetings.asco.org) to view a list of exhibiting companies.

## Career Opportunities

Browse available career opportunities via ASCO's online Career Center. Use the computers at the Internet Station to easily discover open positions by location, category, or position title or search by keyword. Questions? Visit the ASCO Customer Service Desk in the Level 1 Lobby.

## Quiet Room

A nondenominational Quiet Room is available for attendees on Level 2 in Room 2011.

Hours:

- Thursday, February 17: 7:00 AM-6:45 PM
- Friday, February 18: 6:30 AM-6:15 PM
- Saturday, February 19: 6:30 AM-5:00 PM

## Nursing Room

A private Nursing Room is available for use by attendees on Level 2 in Room 2006. There will be an electrical outlet and refrigerator available for attendee use. The room will be unlocked, but a "Room In Use" sign will be provided for privacy. A Mamava nursing pod is also available for attendees on Level 2 by the Howard Street restroom. Use the Mamava app to unlock and use the pod.

### Hours:

- Thursday, February 17: 7:00 AM-6:45 PM
- Friday, February 18: 6:30 AM-6:15 PM
- Saturday, February 19: 6:30 AM-5:00 PM

## Meeting Policies

Important policies for this Symposium, including the Attendee Code of Conduct, are available at [gu.asco.org](http://gu.asco.org).

**REMINDER: Please keep personal belongings with you at all times during the Symposium.**

## Health and Safety

ASCO is committed to maintaining the health and safety of all 2022 ASCO Genitourinary Cancers Symposium attendees. Visit the Health and Safety page at [gu.asco.org](http://gu.asco.org) for the latest in-person attendee requirements and protocols.

ASCO will have free rapid antigen tests available at the convention center for any registered attendees. PCR COVID testing will also be available in the convention center for any registered attendee who

experiences symptoms onsite and for registered attendees who must show proof of a recent negative COVID-19 test to board their return flight.

If you have any questions about the health and safety protocols for the meeting, please visit the ASCO Customer Service Desk in the Level 1 Lobby.

**ASCO and Conquer Cancer would like to thank the following major donors of the 2022 ASCO Genitourinary Cancers Symposium:  
Astellas (Innovator Level).**

# Ancillary Educational Events

The events listed below are independent, accredited educational activities held adjunct to the ASCO Genitourinary Cancers Symposium. Presentations are not sponsored or endorsed by ASCO®, CancerLinQ®, or Conquer Cancer®, the ASCO Foundation.

## **Optimizing Therapeutic Strategies in Metastatic Hormone Naïve and Non-Metastatic Castration Resistant Prostate Cancer**

**Date and Time:** Thursday, February 17, 2022; 7:30 PM PST (Dinner at 7:00 PM PST)

**Location:** San Francisco Marriott Marquis–Yerba Buena Ballroom Salon 7

**CME Provider and Supporter(s):** This event is organized and accredited by HMP Education, an HMP Global Company and is supported by an educational grant from Janssen Biotech, Inc.

**Registration and Contact Information:** To register for the in-person or livestream event, visit: <https://www.naccme.com/program/GUProstateSymposium>. For additional information, email [mstefan@naccme.com](mailto:mstefan@naccme.com) or call 609-630-6206.

### **Event Summary**

After completing this activity, learners should be able to:

- Assess PSA as a diagnostic and prognostic biomarker and emerging applications for NGI in staging and treatment selection
- Evaluate recent and relevant clinical efficacy and safety data on antiandrogen agents in PC
- Utilize clinical practice guidelines to inform treatment selection
- Implement strategies for managing AEs associated with antiandrogen agents

### **Faculty**

Julie N. Graff, MD  
*OHSU Knight Cancer Institute, VA Portland Health Care System*

Andrew J. Armstrong, MD, ScM, FACP  
*Duke Cancer Institute Center for Prostate and Urologic Cancers, Duke University*

## **BEYOND THE GUIDELINES: Clinical Investigator Perspectives on the Management of Patients with Bladder Cancer**

**Date and Time:** Friday, February 18, 2022; 6:30 PM PST (Registration & Dinner Buffet Opens at 6:15 PM PST)

**Location:** San Francisco Marriott Marquis–Golden Gate Ballroom-Salon C (Lower Level-B2 Level)

**CME Provider and Supporter(s):** This event is organized and accredited by Research to Practice and supported through educational grants provided by Astellas and Seagen Inc., AstraZeneca Pharmaceuticals LP, Bristol-Myers Squibb Company, and Gilead Sciences Inc.

**Registration and Contact Information:** To register to attend in-person program or live webcast of this complimentary event, visit: <http://www.researchtopractice.com/Meetings/GUCancers2022>. For additional information, email [meetings@researchtopractice.com](mailto:meetings@researchtopractice.com) or call +1(305) 377-2828 / Toll Free (800) 233-6153.

### **Event Summary**

The 1.5 hour CME-accredited hybrid event will focus on the latest data and treatment recommendations relevant to the management of patients with bladder cancer. Four expert investigators will serve as the faculty, one of which will also serve the program moderator. Prior to the program, Research To Practice will recruit 16 investigators who, in addition to the faculty members, will complete a survey of case-based and general management questions to illuminate their practice patterns related to the management of patients with this disease. For each module, the program moderator will facilitate a discussion of relevant survey results followed by a faculty member-led review of related clinical research. To make the program more interactive, clinician attendees will use iPads to participate in a premeeting survey featuring a number of the same questions posed to the investigators. Results from the two cohorts will be juxtaposed and used to foster additional debate.

### **Faculty**

Andrea B. Apolo, MD  
*National Institutes of Health*

Daniel P. Petrylak, MD  
*Yale School of Medicine*

Sumanta K. Pal, MD-Moderator  
*City of Hope Comprehensive Cancer Center*

*\*Additional faculty to be announced.*

# Industry Expert Theater

Industry Expert Theater (IET) sessions, located in the Poster, Exhibits, and Food Room, provide an opportunity for exhibitors to present 45-minute in-person or pre-recorded nonaccredited educational sessions highlighting a new service or the development of a particular product. IET sessions are not official presentations of the 2022 ASCO Genitourinary Cancers Symposium and are not sponsored, endorsed, or accredited by ASCO. These sessions are not CME-accredited. Most sessions will be available online on demand at [gu.asco.org](http://gu.asco.org) within one week of the Symposium.\*

## Thursday, February 17

**Time:** 11:45 AM–12:30 PM

**Company:** AstraZeneca

**Presentation Title:** Clinical Profile of a PARP Inhibitor for the Treatment of mCRPC

**Presenter:**

Julia Matejec, PharmD  
*Medical Science Liaison*  
AstraZeneca

**Time:** 6:00 PM–6:45 PM

**Company:** Myovant Sciences Inc. and Pfizer Inc.

**Presentation Title:** An Oral Treatment Option for Advanced Prostate Cancer

**Presenter:**

Bruce Brown, MD  
*Vice President Clinical Development*  
Myovant Sciences

## Friday, February 18

**Time:** 12:45 PM–1:30 PM

**Company:** Exelixis, Inc. - Commercial

**Presentation Title:** A Combination Treatment for Patients with Advanced Renal Cell Carcinoma

**Presenter:**

Jose Perez, MD  
*Vice President Exelixis Medical Affairs*  
Exelixis, Inc.

**Time:** 5:30 PM–6:15 PM

**Company:** Natera

**Presentation Title:** Cancer GeKNOWmics: Advances in Circulating Tumor DNA Testing for Bladder Cancer

**Presenter:**

Angel A. Rodriguez, MD  
*Medical Director, Oncology*  
Natera

## Saturday, February 19

**Time:** 12:45 PM–1:30 PM

**Company:** Gilead Sciences

**Presentation Title:** Learn about a Phase II Open-Label Clinical Trial in Metastatic Urothelial Cancer After Failure of Platinum-Based Regimen or Anti-PD-1/PD-L1 Based Immunotherapy

**Presenter:**

Trey Powell, PharmD, MBA  
*Senior Director, Medical Affairs*  
Gilead Oncology

\*The schedule provided is subject to change. For the most up-to-date information, please visit [gu.asco.org](http://gu.asco.org).

*Information is current as of January 10, 2022.*

# Program at a Glance

Thursday, February 17

|                      |  |
|----------------------|--|
| Available at 7:00 AM | <b>BEST OF JOURNALS: Prostate Cancer (ONLINE ONLY)</b>   |
| 7:00 AM - 6:45 PM    | <b>Exhibits Open</b>   |
| 7:00 AM - 7:45 AM    | <b>Complimentary Continental Breakfast</b>   |
| 7:45 AM - 9:30 AM    | <b>NOVEL TREATMENT IMPLEMENTATION: PROSTATE-SPECIFIC MEMBRANE ANTIGEN TARGETING AND BEYOND</b>                               |
| 9:30 AM - 10:00 AM   | <b>Break</b>   |
| 10:00 AM - 11:30 AM  | <b>OPTIMIZING MANAGEMENT OF LOCALIZED PROSTATE CANCER: ARTIFICIAL INTELLIGENCE, ACTIVE SURVEILLANCE, AND INTERVENTION</b>    |
| 11:30 AM - 1:00 PM   | <b>POSTER SESSION A: Prostate Cancer</b><br><i>With complimentary boxed lunch</i>  |
|                      | <b>TRIALS IN PROGRESS POSTER SESSION A: Prostate Cancer</b><br><i>With complimentary boxed lunch</i>                         |
| 11:45 AM - 12:45 PM  | <b>TRAINEE AND EARLY-CAREER NETWORKING LUNCH*</b><br><i>With complimentary boxed lunch</i>                                   |
| 1:00 PM - 2:30 PM    | <b>ORAL ABSTRACT SESSION A: Prostate Cancer</b>  |
| 2:30 PM - 3:00 PM    | <b>Break</b>   |
| 3:00 PM - 4:30 PM    | <b>EVOLUTION OF MULTIDISCIPLINARY MANAGEMENT ACROSS THE SPECTRUM OF PROSTATE CANCER</b>                                      |
| 4:45 PM - 5:45 PM    | <b>RAPID ABSTRACT SESSION A: Prostate Cancer</b>   |
| 5:45 PM - 6:45 PM    | <b>POSTER SESSION A (CONTINUED) AND NETWORKING RECEPTION</b><br><i>With complimentary wine and cheese</i>                    |
|                      | <b>TRIALS IN PROGRESS POSTER SESSION A (CONTINUED) AND NETWORKING RECEPTION</b><br><i>With complimentary wine and cheese</i> |
| 6:00 PM - 6:45 PM    | <b>POSTER WALKS: Prostate Cancer*</b>  |

All times are in Pacific Standard Time.

\*Open to all in-person attendees. Space is limited and is available on a first-come, first-served basis.

## Friday, February 18

|                      |  |
|----------------------|--|
| Available at 7:00 AM | <b>BEST OF JOURNALS: Urothelial Carcinoma (ONLINE ONLY)</b>  |
| 6:30 AM - 7:55 AM    | <b>Complimentary Continental Breakfast</b>   |
| 7:00 AM - 6:15 PM    | <b>Exhibits Open</b>   |
| 7:00 AM - 8:00 AM    | <b>RAPID ABSTRACT SESSION B: Urothelial Carcinoma</b>  |
| 8:15 AM - 9:30 AM    | <b>NOVEL THERAPIES AND THEIR TOXICITIES IN BLADDER CANCER</b>  |
| 9:30 AM - 10:00 AM   | <b>Break</b>   |
| 10:00 AM - 10:45 AM  | <b>KEYNOTE</b>   |
| 11:00 AM - 12:30 PM  | <b>POTPOURRI OF HOT TOPICS IN UROTHELIAL CARCINOMA</b>   |
| 12:30 PM - 2:00 PM   | <b>POSTER SESSION B: Urothelial Carcinoma</b><br><i>With complimentary boxed lunch</i>                                       |
|                      | <b>TRIALS IN PROGRESS POSTER SESSION B: Urothelial Carcinoma</b><br><i>With complimentary boxed lunch</i>                    |
| 2:00 PM - 3:30 PM    | <b>ORAL ABSTRACT SESSION B: Urothelial Carcinoma</b>   |
| 3:45 PM - 5:15 PM    | <b>DEMYSTIFYING NEXT-GENERATION SEQUENCING IN UROTHELIAL CARCINOMA: A CASE-BASED APPROACH</b>                                |
| 5:15 PM - 6:15 PM    | <b>POSTER SESSION B (CONTINUED) AND NETWORKING RECEPTION</b><br><i>With complimentary wine and cheese</i>                    |
|                      | <b>TRIALS IN PROGRESS POSTER SESSION B (CONTINUED) AND NETWORKING RECEPTION</b><br><i>With complimentary wine and cheese</i> |
| 5:30 PM - 6:15 PM    | <b>POSTER WALKS: Urothelial Carcinoma*</b>   |

All times are in Pacific Standard Time.

\*Open to all in-person attendees. Space is limited and is available on a first-come, first-served basis.



|                      |   |
|----------------------|---|
| Available at 7:00 AM | <b>VIRTUAL POSTER WALK: Disparities in Cancer Care and Research (ONLINE ONLY)</b>   |
|                      | <b>BEST OF JOURNALS: Renal Cell Carcinoma (ONLINE ONLY)</b>   |
| 7:00 AM - 8:00 AM    | <b>POSTER SESSION C: Renal Cell Cancer; Adrenal, Penile, Urethral, and Testicular Cancers</b><br><i>With complimentary continental breakfast</i>                    |
|                      | <b>TRIALS IN PROGRESS POSTER SESSION C: Renal Cell Cancer; Adrenal, Penile, Urethral, and Testicular Cancers</b><br><i>With complimentary continental breakfast</i> |
|                      | <b>REGULATING THE WILD WEST: PET-BASED IMAGING IN TRIALS AND THE CLINIC</b>   |
| 8:15 AM - 9:15 AM    | <b>RAPID ABSTRACT SESSION C: Renal Cell Cancer and Rare Tumors</b>  |
| 9:15 AM - 9:45 AM    | <b>Break</b>  |
| 9:45 AM - 11:15 AM   | <b>EMERGING BIOMARKERS AND THERAPIES IN RENAL CELL CARCINOMA</b>  |
| 11:30 AM - 12:30 PM  | <b>MANAGEMENT OF RARE VARIANTS IN GENITOURINARY CANCERS</b>   |
| 12:30 PM - 2:00 PM   | <b>POSTER SESSION C (CONTINUED)</b><br><i>With complimentary boxed lunch</i>  |
|                      | <b>TRIALS IN PROGRESS POSTER SESSION C (CONTINUED)</b><br><i>With complimentary boxed lunch</i>   |
| 12:45 PM - 1:30 PM   | <b>POSTER WALKS: Renal Cell Cancer; Adrenal, Penile, Urethral, and Testicular Cancers*</b>  |
| 2:00 PM - 3:30 PM    | <b>ORAL ABSTRACT SESSION C: Renal Cell Cancer and Rare Tumors</b>   |
| 3:45 PM - 5:00 PM    | <b>FROM GENETIC TESTING TO SYSTEMIC THERAPIES: CASE-BASED PANEL ON RENAL CELL CARCINOMA</b>   |

All times are in Pacific Standard Time.

\*Open to all in-person attendees. Space is limited and is available on a first-come, first-served basis.

**NEED SUPPLIES?**

Find water stations, note pads, and pens at the entrance to the General Session Room.

**NEED TO CHARGE A DEVICE?**

Power strips for charging your devices are located throughout the General Session Room. Additionally, if you forgot the charging cord for your phone or tablet, visit the Charging Locker or Charging Tables in the Posters, Exhibits, and Food Room or the Charging Locker outside the General Session Room. The charging lockers have a variety of cords to fit mobile devices.

# Thursday, February 17

All times are in Pacific Standard Time.

## Online Only

Available at 7:00 AM

### Best of Journals: Prostate Cancer

#### Vivek Narayan, MS, MD

University of Pennsylvania  
*Introduction and Medical Oncology*

#### Renu Eapen, MBBS, FRCS

Peter MacCallum Cancer Centre  
*Surgery*

#### Julia Murray, PhD, FRCR

The Royal Marsden NHS Foundation Trust and The Institute of Cancer Research  
*Radiation Oncology*

#### Dayssy Alexandra Diaz Pardo, MD, MS

The Ohio State University  
*Diversity and Inclusion*

7:00 AM-6:45 PM

### Exhibits Open

LEVEL 1, WEST HALL

7:00 AM-7:45 AM

### Complimentary Continental Breakfast

LEVEL 1, WEST HALL

7:45 AM-9:30 AM

### Novel Treatment Implementation: Prostate-Specific Membrane Antigen Targeting and Beyond

LEVEL 3, BALLROOM

#### Peter Hoskin, MD, FRCP, FRCR—Chair

Mount Vernon Cancer Centre and University College London

#### Felix Y. Feng, MD—Chair

UCSF Helen Diller Family Comprehensive Cancer Center

#### Jason A. Efstathiou, MD, DPhil, FASTRO, FACRO

Massachusetts General Hospital and Harvard Medical School  
*Welcome of the Day*

#### Shahneen Kaur Sandhu, MD

Peter MacCallum Cancer Centre  
*Targeting Prostate-Specific Membrane Antigen: Lutetium and the Next Wave of Novel Radiopharmaceuticals*

#### Tanya B. Dorff, MD

City of Hope Comprehensive Cancer Center  
*Beyond Prostate-Specific Membrane Antigen: New Targets in Prostate Cancer*

#### Johannes Czernin, MD

University of California, Los Angeles

*Mechanisms of Resistance to Radiopharmaceuticals*

#### Himisha Beltran, MD

Dana-Farber Cancer Institute  
*Biomarker Testing in the Era of Novel Therapeutics*

#### Kosj Yamoah, MD, PhD

Moffitt Cancer Center  
*Challenges and Opportunities in Delivering Novel Therapies: The Diversity and Inclusion Perspective*

**ABSTRACT 10:** PSMA PET and FDG PET as predictors of response and prognosis in a randomized phase 2 trial of <sup>177</sup>Lu-PSMA-617 (LuPSMA) versus cabazitaxel in metastatic, castration-resistant prostate cancer (mCRPC) progressing after docetaxel (TheraP ANZUP 1603).

First Author: James Patrick Buteau, MD, FRCPC

*Moderated Panel Discussion With Drs. Hoskin, Feng, Sandhu, Dorff, Czernin, Beltran, Yamoah, and Buteau*

9:30 AM-10:00 AM

### Break

10:00 AM-11:30 AM

### Optimizing Management of Localized Prostate Cancer: Artificial Intelligence, Active Surveillance, and Intervention

LEVEL 3, BALLROOM

#### Bridget F. Koontz, MD—Chair

GenesisCare

#### Antonio C. Westphalen, MD—Chair

University of Washington

#### Stacy Loeb, MD

NYU Langone Health  
*Active Surveillance for Patients With Intermediate-Risk Disease: Risk Versus Benefit*

#### Alberto Bossi, MD

Gustave Roussy Institute  
*Radiation Therapy in Localized Disease: Changing Horizons*

#### Mary-Ellen Taplin, MD, FASCO

Dana-Farber Cancer Institute  
*Combined Modality Therapy in Localized Disease: Changing Horizons*

#### Antonio C. Westphalen, MD

University of Washington  
*Artificial Intelligence as Disruptive Technology in Medicine*

**ABSTRACT 222:** Development and validation of a prognostic AI biomarker using multi-modal deep learning with digital histopathology in localized prostate cancer on NRG Oncology phase III clinical trials.

First Author: Andre Esteva, PhD

**ABSTRACT 223:** An AI-derived digital pathology-based biomarker to predict the benefit of androgen deprivation therapy in localized prostate cancer with validation in NRG/RTOG 9408.

First Author: Daniel E. Spratt, MD

*Moderated Panel Discussion With Drs. Koontz, Westphalen, Loeb, Bossi, Taplin, Esteva, and Spratt*

11:30 AM-1:00 PM

**Poster Session A: Prostate Cancer**

LEVEL 1, WEST HALL

*With complimentary boxed lunch. Please see insert for full listing of poster titles.*

11:30 AM-1:00 PM

**Trials in Progress Poster Session A: Prostate Cancer**

LEVEL 1, WEST HALL

*With complimentary boxed lunch. Please see insert for full listing of poster titles.*

11:45 AM-12:45 PM

**Trainee and Early-Career Networking Lunch**

LEVEL 2, ROOM 2014

*With complimentary boxed lunch. This is an in-person only networking luncheon. Space is limited and is available on a first-come, first-served basis. For more information on networking opportunities, please visit [gu.asco.org](http://gu.asco.org).*

**Jason A. Efstathiou, MD, DPhil, FASTRO, FACRO—Chair**

Massachusetts General Hospital and Harvard Medical School

**Andrea B. Apolo, MD**

National Cancer Institute, National Institutes of Health

**Alberto Bossi, MD**

Gustave Roussy Institute

**Felix Y. Feng, MD**

UCSF Helen Diller Family Comprehensive Cancer Center

**Karim Fizazi, MD, PhD**

Gustave Roussy and University of Paris-Saclay

**Karen E. Hoffman, MD, MPH, MHSc**

The University of Texas MD Anderson Cancer Center

**Karen E. Knudsen, PhD, MBA**

American Cancer Society

**Stacy Loeb, MD**

NYU Langone Health

**Matthew I. Milowsky, MD, FASCO**

University of North Carolina at Chapel Hill

**Todd M. Morgan, MD**

University of Michigan

**Alicia K. Morgans, MD, MPH**

Dana-Farber Cancer Institute

**Brian I. Rini, MD, FASCO**

Vanderbilt-Ingram Cancer Center

**Eila C. Skinner, MD**

Stanford University School of Medicine

**Scott T. Tagawa, MD, MS, FACP**

Weill Cornell Medicine

1:00 PM-2:30 PM

**Oral Abstract Session A: Prostate Cancer**

LEVEL 3, BALLROOM

**Jason A. Efstathiou, MD, DPhil, FASTRO, FACRO—Chair**

Massachusetts General Hospital and Harvard Medical School

**David James VanderWeele, MD, PhD—Chair**

Northwestern University

**ABSTRACT 11:** PROpel: Phase III trial of olaparib and abiraterone versus placebo and abiraterone as first-line therapy for patients with metastatic castration-resistant prostate cancer (mCRPC).

First Author: Fred Saad, MD, FRCS

**ABSTRACT 12:** Phase 3 MAGNITUDE study: First results of niraparib (NIRA) with abiraterone acetate and prednisone (AAP) as first-line therapy in patients (pts) with metastatic castration-resistant prostate cancer (mCRPC) with and without homologous recombination repair (HRR) gene alterations.

First Author: Kim N. Chi, MD, FRCP

**Discussion:**

**Celestia Higano, MD**

University of British Columbia

**ABSTRACT 13:** Overall survival with darolutamide versus placebo in combination with docetaxel and androgen-deprivation therapy for metastatic hormone-sensitive prostate cancer in the phase 3 ARASENS trial.

First Author: Matthew Raymond Smith, MD, PhD

**ABSTRACT 15:** A randomized, double-blind, placebo (PBO)-controlled, phase 3b study of the efficacy and safety of continuing enzalutamide (ENZA) in chemotherapy-naïve, metastatic castration-resistant prostate cancer (mCRPC) patients (pts) treated with docetaxel (DOC) plus prednisolone (PDN) who have progressed on ENZA: PRESIDE.

First Author: Axel S. Merseburger, MD

**Discussion: Elisabeth I. Heath, MD, FACP**

Karmanos Cancer Institute, Wayne State University School of Medicine

*Moderated Panel Discussion With Drs. Efstathiou, Vanderweele, Saad, Chi, Higano, Smith, Merseburger, and Heath*

2:30 PM-3:00 PM

**Break**

3:00 PM-4:30 PM

## Evolution of Multidisciplinary Management Across the Spectrum of Prostate Cancer

LEVEL 3, BALLROOM

### Karim Fizazi, MD, PhD—Chair

Gustave Roussy and University of Paris-Saclay

### Derya Tilki, MD—Chair

Martini-Klinik Prostate Cancer Center, University Hospital Hamburg-Eppendorf

*Case Panel Discussion*

- **Amar Upadhyaya Kishan, MD**

University of California, Los Angeles  
*Radiation Oncology*

- **Noel W. Clarke, FRCS**

The Christie NHS Foundation Trusts  
*Urology*

- **Dana E. Rathkopf, MD**

Memorial Sloan Kettering Cancer Center and Weill Cornell  
Medicine  
*Medical Oncology*

- **Ana Aparicio, MD**

The University of Texas MD Anderson Cancer Center  
*Medical Oncology*

**ABSTRACT 9:** Diagnostic performance and safety of <sup>18</sup>F-rhPSMA-7.3 PET in patients with suspected prostate cancer recurrence: Results from a phase 3, prospective, multicenter study (SPOTLIGHT).

First Author: David M. Schuster, MD

*Moderated Panel Discussion With Drs. Fizazi, Tilki, Kishan, Clarke, Rathkopf, Aparicio, and Schuster*

4:45 PM-5:45 PM

## Rapid Abstract Session A: Prostate Cancer

LEVEL 3, BALLROOM

### Hala Borno, MD—Chair

University of California, San Francisco

**ABSTRACT 224:** Randomized phase II trial of neoadjuvant abiraterone plus or minus cabazitaxel in high-risk prostate cancer: ACDC-RP.

First Author: Neil E. Fleshner, MD, MPH

**ABSTRACT 16:** Identifying patient profiles and mapping the patient journey across three countries in a large-scale, fully digital survey of patients with prostate cancer.

First Author: Alicia K. Morgans, MD, MPH

**ABSTRACT 17:** Phase 1/2 study of ARV-110, an androgen receptor (AR) PROTAC degrader, in metastatic castration-resistant prostate cancer (mCRPC).

First Author: Xin Gao, MD

**ABSTRACT 18:** Phase 1 results of the ODM-208 first-in-human phase 1-2 trial in patients with metastatic castration-resistant prostate cancer (CYPIDES).

First Author: Karim Fizazi, MD, PhD

**ABSTRACT 19:** Bone mineral density in men with de novo metastatic castration-sensitive prostate cancer treated with or without abiraterone plus prednisone in the PEACE-1 phase 3 trial.

First Author: Guilhem Roubaud, MD

*Moderated Panel Discussion With Drs. Borno, Fleshner, Morgans, Gao, Fizazi, and Roubaud*

5:45 PM-6:45 PM

## Poster Session A (Continued) and Networking Reception

LEVEL 1, WEST HALL

*With complimentary wine and cheese. Please see insert for full listing of poster titles.*

5:45 PM-6:45 PM

## Trials in Progress Poster Session A (Continued) and Networking Reception

LEVEL 1, WEST HALL

*With complimentary wine and cheese. Please see insert for full listing of poster titles.*

6:00 PM-6:45 PM

## Poster Walks: Prostate Cancer

LEVEL 1, WEST HALL

*This is an in-person only networking session open to all attendees. Space is limited and is available on a first-come, first-served basis. Please meet at the Poster Assistance Desk. For more information about networking opportunities please visit [gu.asco.org](http://gu.asco.org).*

### Daniel E. Spratt, MD—Poster Walk Leader

University Hospitals Seidman Cancer Center

### Neil Bipinchandra Desai, MD—Poster Walk Leader

The University of Texas Southwestern Medical Center

# Friday, February 18

All times are in Pacific Standard Time.

## Online Only

Available at 7:00

### Best of Journals: Urothelial Carcinoma

#### Daniel da Motta Girardi, MD

Hospital Sírio-Libanês  
*Introduction and Medical Oncology*

#### Deborah Kaye, MD, MS

Duke University  
*Surgery*

#### Himanshu Nagar, MD

New York Presbyterian Hospital and Weill Cornell Medicine  
*Radiation Oncology*

#### Francesca Khani, MD

New York Presbyterian Hospital and Weill Cornell Medicine  
*Pathology*

6:30 AM-7:55 AM

### Complimentary Continental Breakfast

LEVEL 1, WEST HALL

7:00 AM-6:15 PM

### Exhibits Open

LEVEL 1, WEST HALL

7:00 AM-8:00 AM

### Rapid Abstract Session B: Urothelial Carcinoma

LEVEL 3, BALLROOM

#### Stephen A. Boorjian, MD—Chair

Mayo Clinic

**ABSTRACT 438:** Primary analysis from DS8201-A-U105: A phase 1b, 2-part, open-label study of trastuzumab deruxtecan (T-DXd) with nivolumab (nivo) in patients (pts) with HER2-expressing urothelial carcinoma (UC).

First Author: Matt D. Galsky, MD, FASCO

**ABSTRACT 439:** First line avelumab in PD-L1 +ve metastatic or locally advanced urothelial cancer (aUC) patients unfit for cisplatin (cis): The ARIES trial.

First Author: Roberto Iacovelli, MD, PhD

**ABSTRACT 440:** Final results of a multicenter prospective phase II clinical trial of gemcitabine and cisplatin as neoadjuvant chemotherapy in patients with high-grade upper tract urothelial carcinoma.

First Author: Wesley Yip, MD

**ABSTRACT 441:** Tailored immunotherapy approach with nivolumab in advanced transitional cell carcinoma (TITAN-TCC).

First Author: Marc-Oliver Grimm, MD

**ABSTRACT 442:** Randomized phase II study of niraparib plus best supportive care (BSC) versus BSC alone as maintenance treatment in patients with advanced urothelial carcinoma (UC) whose disease did not progress after first-line platinum-based chemotherapy (PBCT): The Meet-URO12 trial.

First Author: Francesca Vignani, MD

*Moderated Panel Discussion With Drs. Boorjian, Galsky, Iacovelli, Yip, Grimm, and Vignani*

8:15 AM-9:30 AM

### Novel Therapies and Their Toxicities in Bladder Cancer

LEVEL 3, BALLROOM

#### Matthew I. Milowsky, FASCO, MD—Chair

The University of North Carolina at Chapel Hill

#### Sam S. Chang, MD, MBA—Chair

Vanderbilt School of Medicine

#### Stephen A. Boorjian, MD

Mayo Clinic  
*Welcome of the Day*

#### Anthony W. Tolcher, MD, FASCO

NEXT Oncology  
*Homing in on Tumor Antigens With Antibody-Drug Conjugates in Advanced Urothelial Cancer: Basic Principles*

#### Scott T. Tagawa, MD, MS, FACP

Weill Cornell Medicine  
*Highlighting Antibody-Drug Conjugates in Advanced Urothelial Cancer: Clinical Perspectives*

#### Thomas W. Flaig, MD

University of Colorado Anschutz Medical Campus  
*Management of Toxicities With Novel Systemic Therapies in Urothelial Carcinoma*

#### Tracy L. Rose, MD

The University of North Carolina at Chapel Hill and Lineberger Comprehensive Cancer Center  
*The Future Landscape of Adjuvant and Neoadjuvant Therapy in Muscle-Invasive Bladder Cancer*

#### Sophia C. Kamran, MD

Massachusetts General Hospital  
*Bladder-Sparing Trimodality Therapy: Toxicity and Functional Outcomes in the Era of Novel Therapeutics*

**ABSTRACT 432:** First-line pembrolizumab (pembro) with or without lenvatinib (lenva) in patients with advanced urothelial carcinoma (LEAP-011): A phase 3, randomized, double-blind study.

First Author: Yohann Loriot, MD, PhD

*Moderated Panel Discussion With Drs. Milowsky, Chang, Tolcher, Tagawa, Flaig, Rose, Kamran, and Loriot*

9:30 AM-10:00 AM

**Break**

10:00 AM-10:45 AM

**Keynote**

LEVEL 3, BALLROOM

**Jason A. Efstathiou, MD, DPhil, FASTRO, FACRO**

Massachusetts General Hospital and Harvard Medical School  
*Introduction*

**Karen E. Knudsen, PhD, MBA**

American Cancer Society  
*A Path Forward: Addressing Disparities in Genitourinary Cancers*

*Question and Answer With Drs. Knudsen and Efstathiou*

11:00 AM-12:30 PM

**Potpourri of Hot Topics in Urothelial Carcinoma**

LEVEL 3, BALLROOM

**Lambros Stamatakis, MD—Chair**

MedStar Health

**Jean H. Hoffman-Censits, MD—Chair**

The Sidney Kimmel Comprehensive Cancer Center at Johns Hopkins

**Surena F. Matin, MD, FACS**

The University of Texas MD Anderson Cancer Center  
*Endoscopic Management of Low-Grade Upper-Tract Urothelial Carcinoma*

**Janet Baack Kukreja, MD, MPH**

University of Colorado  
*Clinical Implications of Molecular Biomarkers in Upper-Tract Urothelial Carcinoma*

**Shaista Hafeez, MBBS, PhD, MSc, MRCP, FRCR**

The Institute of Cancer Research and The Royal Marsden NHS Foundation Trust  
*New Evidence to Optimize Bladder Preservation*

**Lars Dyrskjöt, PhD**

Aarhus University Hospital  
*ctDNA Analysis in Muscle-Invasive Bladder Cancer: Therapy Response, Risk of Recurrence, and Early Relapse Detection*

**Samuel L. Washington III, MD**

University of California, San Francisco  
*Race and Gender Disparities in Standard-of-Care Practice in Bladder Cancer*

**ABSTRACT 433:** Multi-institutional matched comparison of radical cystectomy to trimodality therapy for muscle-invasive bladder cancer.

First Author: Alexandre R. Zlotta, MD, PhD

*Moderated Panel Discussion With Drs. Stamatakis, Hoffman-Censits, Matin, Kukreja, Hafeez, Dyrskjöt, Washington, and Zlotta*

12:30 PM-2:00 PM

**Poster Session B: Urothelial Carcinoma**

LEVEL 1, WEST HALL

*With complimentary boxed lunch. Please see insert for full listing of poster titles.*

12:30 PM-2:00 PM

**Trials in Progress Poster Session B: Urothelial Carcinoma**

LEVEL 1, WEST HALL

*With complimentary boxed lunch. Please see insert for full listing of poster titles.*

2:00 PM-3:30 PM

**Oral Abstract Session B: Urothelial Carcinoma**

LEVEL 3, BALLROOM

**Andrea B. Apolo, MD—Chair**

National Cancer Institute, National Institutes of Health

**Todd M. Morgan, MD—Chair**

University of Michigan

**ABSTRACT 434:** TROPHY-U-01 cohort 3: Sacituzumab govitecan (SG) in combination with pembrolizumab (Pembro) in patients (pts) with metastatic urothelial cancer (mUC) who progressed after platinum (PLT)-based regimens.  
First Author: Petros Grivas, MD, PhD

**ABSTRACT 435:** Study EV-103 cohort H: Antitumor activity of neoadjuvant treatment with enfortumab vedotin monotherapy in patients (pts) with muscle invasive bladder cancer (MIBC) who are cisplatin-ineligible.  
First Author: Daniel P. Petrylak, MD

**Discussion: Guru P. Sonpavde, MD**

Dana-Farber Cancer Institute

**ABSTRACT 436:** A randomized, double blind, biomarker selected, phase II clinical trial of maintenance PARP inhibition following chemotherapy for metastatic urothelial carcinoma (mUC): Final analysis of the ATLANTIS rucaparib arm.  
First Author: Simon J. Crabb, MBBS, PhD

**ABSTRACT 437:** BAYOU: A phase II, randomized, multicenter, double-blind, study of durvalumab (D) in combination with olaparib (O) for the first-line treatment of platinum-ineligible patients with unresectable, stage IV urothelial carcinoma (UC).  
First Author: Jonathan E. Rosenberg, MD

**Discussion: Sandy Srinivas, MD**

Stanford University Medical Center

*Moderated Panel Discussion With Drs. Apolo, Morgan, Grivas, Petrylak, Sonpavde, Crabb, Rosenberg, and Srinivas*

3:45 PM-5:15 PM

## **Demystifying Next-Generation Sequencing in Urothelial Carcinoma: A Case-Based Approach**

LEVEL 3, BALLROOM

### **Evan Y. Yu, MD—Chair**

University of Washington

### **Wassim Kassouf, MD, FRCS—Chair**

McGill University Health Center

### **David B. Solit, MD**

Memorial Sloan Kettering Cancer Center

*Introduction to Next-Generation Sequencing*

### **Bishoy Morris Faltas, MD**

Weill Cornell Medicine

*Next-Generation Sequencing: Discussing Results With Patients*

*Case Panel Discussion*

- **David B. Solit, MD**

Memorial Sloan Kettering Cancer Center

*Medical Oncology*

- **Bishoy Morris Faltas, MD**

Weill Cornell Medicine

*Medical Oncology*

- **Ludmila Prokunina-Olsson, PhD**

National Cancer Institute

*Genetics*

- **Peter C. Black, MD**

Vancouver Prostate Center, University of British Columbia

*Urology*

- **David Tomoaki Miyamoto, MD, PhD**

Massachusetts General Hospital and Harvard Medical School

*Radiation Oncology*

- **Donna E. Hansel, MD, PhD**

Oregon Health & Science University

*Pathology*

**ABSTRACT 431:** Positive efficacy and safety phase 3 results in both CIS and papillary cohorts BCG-unresponsive nonmuscle invasive bladder cancer (NMIBC) after IL-15R $\alpha$ Fc superagonist N-803 (Anktiva) and BCG infusion.

First Author: Sam S. Chang, MD, MBA

*Moderated Panel Discussion With Drs. Yu, Kassouf, Solit, Faltas, Prokunina-Olsson, Black, Miyamoto, Hansel, and Chang*

5:15 PM-6:15 PM

## **Poster Session B (Continued) and Networking Reception**

LEVEL 1, WEST HALL

*With complimentary wine and cheese. Please see insert for full listing of poster titles.*

5:15 PM-6:15 PM

## **Trials in Progress Poster Session B (Continued) and Networking Reception**

LEVEL 1, WEST HALL

*With complimentary wine and cheese. Please see insert for full listing of poster titles.*

5:30 PM-6:15 PM

## **Poster Walks: Urothelial Carcinoma**

LEVEL 1, WEST HALL

*This is an in-person only networking session open to all attendees. Space is limited and is available on a first-come, first-served basis. Please meet at the Poster Assistance Desk. For more information about networking opportunities please visit [gu.asco.org](http://gu.asco.org).*

### **Anne K. Shuckman, MD—Poster Walk Leader**

University of Southern California

### **Scot Anthony Niglio, MD, MS—Poster Walk Leader**

National Cancer Institute, National Institutes of Health

# Saturday, February 19

All times are in Pacific Standard Time.

## Online Only

Available at 7:00 AM

### Virtual Poster Walk: Disparities in Cancer Care and Research

#### Ahmedin Jemal, DVM, PhD—Poster Walk Leader

American Cancer Society

**ABSTRACT 472:** Association of Medicaid expansion with racial disparities in timely neoadjuvant chemotherapy (NAC) in muscle-invasive bladder cancer (MIBC).

First Author: Changchuan Jiang, MD, MPH

**ABSTRACT 446:** Evaluating therapeutic bladder cancer trial disparities in race/ethnicity.

First Author: Ishaan Iyer

**ABSTRACT 225:** Association between prostate-specific antigen screening and prostate cancer mortality in a racially diverse cohort of United States veterans.

First Author: Michael Vincent Sherer, MD

**ABSTRACT 26:** A quantitative synthesis of disparities in the inclusion of racial/ethnic minorities and older adults in prostate cancer clinical trials over the last three decades.

First Author: Irbaz Bin Riaz, MBBS, MS

## Online Only

Available at 7:00 AM

### Best of Journals: Renal Cell Carcinoma

#### Mauricio Emanuel Burotto Pichun, MD

Clinica Universidad de los Andes, Bradford Hill Clinical Research Center

*Introduction and Medical Oncology*

#### Reza Mehrazin, MD

Icahn School of Medicine at Mount Sinai

*Surgery*

#### Michael Baine, MD, PhD

University of Nebraska Medical Center

*Radiation Oncology*

#### Payal Kapur, MD

The University of Texas Southwestern Medical Center

*Pathology*

7:00 AM-8:00 AM

### Poster Session C: Renal Cell Cancer; Adrenal, Penile, Urethral, and Testicular Cancers

LEVEL 1, WEST HALL

With complimentary continental breakfast. Please see insert for full listing of poster titles.

7:00 AM-8:00 AM

### Trials in Progress Poster Session C: Renal Cell Cancer; Adrenal, Penile, Urethral, and Testicular Cancers

LEVEL 1, WEST HALL

With complimentary continental breakfast. Please see insert for full listing of poster titles.

7:00 AM-8:00 AM

### Regulating the Wild West: PET-Based Imaging in Trials and the Clinic

LEVEL 3, BALLROOM

#### Alicia K. Morgans, MD, MPH—Chair

Dana-Farber Cancer Institute

#### Elaine Chang, MD—Chair

U.S. Food and Drug Administration

#### Alicia K. Morgans, MD, MPH

Dana-Farber Cancer Institute

*Imaging and Novel Therapeutics: Navigating Paradigm Shifts in Clinical Trials for Early-Stage Disease*

#### Sundeep Agrawal, MD

U.S. Food and Drug Administration

*Regulatory Considerations for Use of PSMA-PET in Clinical Trials of Patients With Prostate Cancer*

#### Shane C. Masters, MD, PhD

U.S. Food and Drug Administration

*Overview of Approved PSMA-PET Imaging Drugs and Their Use in Clinical Trials*

#### Jaleh Fallah, MD

U.S. Food and Drug Administration

*Panelist*

#### Daniel L. Suzman, MD

U.S. Food and Drug Administration

*Panelist*

*Moderated Panel Discussion With Drs. Morgans, Chang, Masters, Fallah, and Suzman*

8:15 AM-9:15 AM

### Rapid Abstract Session C: Renal Cell Cancer and Rare Tumors

LEVEL 3, BALLROOM

#### Robert G. Uzzo, MD, MBA—Chair

Fox Chase Cancer Center

#### Christian K. Kollmannsberger, MD, FRCPC

BC Cancer – Vancouver Cancer Center

*Welcome of the Day*



**ABSTRACT 4:** Comprehensive genomic profiling of penile squamous cell carcinoma and impact of HPV status on immune-checkpoint inhibition-related biomarkers.

First Author: Bassel Nazha, MD, MPH

**ABSTRACT 408:** Differentially expressed mRNA/proteins can distinguish viable germ cell tumors and teratomas from necrosis in retroperitoneal lymph node resections after chemotherapy (pcRPLND).

First Author: Tim Nestler, MD

**ABSTRACT 291:** A phase I/II study of nivolumab and axitinib in patients with advanced renal cell carcinoma.

First Author: Matthew R. Zibelman, MD

**ABSTRACT 292:** Comprehensive genomic profiling (CGP) of chromophobe renal cell carcinoma (chrRCC) compared with clear cell RCC (ccRCC): Impact of FLCN genomic alteration (GA) status.

First Author: Gennady Bratslavsky, MD

**ABSTRACT 367:** Novel predictive biomarkers of response to immune checkpoint blockade with nivolumab ± ipilimumab in the TITAN-RCC phase 2 trial.

First Author: Marc-Oliver Grimm, MD

*Moderated Panel Discussion With Drs. Uzzo, Nazha, Nestler, Zibelman, Bratslavsky, and Grimm*

9:15 AM-9:45 AM

**Break**

9:45 AM-11:15 AM

**Emerging Biomarkers and Therapies in Renal Cell Carcinoma**

LEVEL 3, BALLROOM

**Kirsten Greene, MD—Chair**

UVA Health

**Christian K. Kollmannsberger, MD, FRCPC—Chair**

BC Cancer – Vancouver Cancer Center

**Pooja Ghatalia, MD**

Fox Chase Cancer Center

*Current Data on Predictive Biomarkers in Renal Cell Carcinoma*

**Michael Dean, PhD**

National Cancer Institute

*Germline Mutations of Interests in Renal Cell Carcinoma*

**Jaime R. Merchan, MD, MMedSc**

University of Miami-Miller School of Medicine, Sylvester Comprehensive Cancer Center

*Matching Sequencing Reports With Available Therapies in Renal Cell Carcinoma*

**Hyung Lae Kim, MD**

Cedars-Sinai Medical Center

*Updates on Clinical Trials in Adjuvant Renal Cell Carcinoma*

**Naomi B. Haas, MD**

Abramson Cancer Center, University of Pennsylvania  
*Adjuvant and Consolidative Therapy in Oligometastatic Renal Cell Carcinoma*

**Ulka N. Vaishampayan, MD**

University of Michigan Cancer Center

*Updates on Clinical Trials in First-Line Metastatic Renal Cell Carcinoma Plus Novel Pathways and Endpoints*

**ABSTRACT 287:** Molecular alterations across sites of metastasis in patients with renal cell carcinoma (RCC).

First Author: Rana R. McKay, MD

*Moderated Panel Discussion With Drs. Greene, Kollmannsberger, Ghatalia, Dean, Merchan, Kim, Haas, Vaishampayan, and McKay*

11:30 AM-12:30 PM

**Management of Rare Variants in Genitourinary Cancers**

LEVEL 3, BALLROOM

**Robert Dreicer, MD, MS, MACP, FASCO—Chair**

University of Virginia Cancer Center

**Katie Murray, DO, MS—Chair**

University of Missouri

*Prostate Cancer Variants*

• **Karen E. Hoffman, MD, MPH, MHSc**

The University of Texas MD Anderson Cancer Center  
*Local Therapies*

• **Eric Jay Small, MD, FASCO**

UCSF Helen Diller Family Comprehensive Cancer Center  
*Systemic Therapies*

*Bladder Cancer Variants*

• **Eila C. Skinner, MD**

Stanford University School of Medicine  
*Local Therapies*

• **Jonathan E. Rosenberg, MD**

Memorial Sloan Kettering Cancer Center  
*Systemic Therapies*

**William F. Young Jr., MD, MSc**

Mayo Clinic

*Endocrine Tumors of the Urinary Tract*

*Moderated Panel Discussion With Drs. Dreicer, Murray, Hoffman, Small, Skinner, Rosenberg, and Young*

12:30 PM-2:00 PM

**Poster Session C (Continued)**

LEVEL 1, WEST HALL

*With complimentary boxed lunch. Please see insert for full listing of poster titles.*

12:30 PM-2:00 PM

### **Trials in Progress Poster Session C (Continued)**

LEVEL 1, WEST HALL

*With complimentary boxed lunch. Please see insert for full listing of poster titles.*

12:45 PM-1:30 PM

### **Poster Walks: Renal Cell Cancer; Adrenal, Penile, Urethral, and Testicular Cancers**

LEVEL 1, WEST HALL

*This is an in-person only networking session open to all attendees. Space is limited and is available on a first-come, first-served basis. Please meet at the Poster Assistance Desk. For more information about networking opportunities please visit [gu.asco.org](http://gu.asco.org).*

#### **Yasser Ged, MBBS, MRCP—Poster Walk Leader**

Sidney Kimmel Comprehensive Cancer Center at Johns Hopkins University

#### **Hao G. Nguyen, MD, PhD—Poster Walk Leader**

UCSF Helen Diller Family Comprehensive Cancer Center

2:00 PM-3:30 PM

### **Oral Abstract Session C: Renal Cell Cancer and Rare Tumors**

LEVEL 3, BALLROOM

#### **Jen-Jane Liu, MD—Chair**

Oregon Health and Science University

#### **Mark Wayne Ball, MD—Chair**

National Cancer Institute, National Institutes of Health

**ABSTRACT 3:** Clinical results of PERICLES: A phase II trial investigating atezolizumab +/- radiotherapy for advanced squamous cell carcinoma of the penis.

First Author: Hielke Martijn de Vries, MD

**ABSTRACT 1:** First randomized trial on adjuvant mitotane in adrenocortical carcinoma patients: The Adjuvo study.

First Author: Alfredo Berruti

#### **Discussion: To be determined**

**ABSTRACT 289:** Efficacy, safety, and biomarker analysis of neoadjuvant avelumab/axitinib in patients (pts) with localized renal cell carcinoma (RCC) who are at high risk of relapse after nephrectomy (NeoAvAx).

First Author: Axel Bex, MD, PhD

**ABSTRACT 290:** Pembrolizumab as post nephrectomy adjuvant therapy for patients with renal cell carcinoma: Results from 30-month follow-up of KEYNOTE-564.

First Author: Toni K. Choueiri, MD

#### **Discussion: Daniel M. Geynisman, MD**

Fox Chase Cancer Center, Temple University Health System

*Moderated Panel Discussion With Drs. Liu, Ball, de Vries, Berruti, Bex, Choueiri, and Geynisman*

3:45 PM-5:00 PM

### **From Genetic Testing to Systemic Therapies: Case-Based Panel on Renal Cell Carcinoma**

LEVEL 3, BALLROOM

#### **Katy Beckermann, MD, PhD—Chair**

Vanderbilt University Medical Center

#### **Mary E. Westerman, MD—Chair**

Louisiana State University

#### **Antonio Finelli, MD**

University of Toronto

*Case #1: Indolent Renal Tumors*

#### **Xin Gao, MD**

Massachusetts General Hospital

*Case #2: Patients With High-Risk Renal Cell Carcinoma Who Need Systemic Therapies*

#### **Brian I. Rini, MD, FASCO**

Vanderbilt-Ingram Cancer Center

*Case #3: Management of Concurrent Adverse Events Due to Combination Therapies*

**ABSTRACT 288:** Phase II study of nivolumab and salvage nivolumab + ipilimumab in treatment-naïve patients (pts) with advanced clear cell renal cell (HCRN GU16-260-Cohort A): Final report.

First Author: Michael B. Atkins, MD

*Moderated Panel Discussion With Drs. Beckermann, Westerman, Finelli, Gao, Rini, and Atkins*

# Exhibitor Directory

## LEVEL 1, WEST HALL

The exhibits are open on Thursday, February 17 from 7:00 AM to 6:45 PM and Friday, February 18 from 7:00 AM to 6:15 PM.

A floorplan highlighting the location of each exhibitor can be found online at [meetings.asco.org](https://meetings.asco.org).

\*The list of exhibitors is current as of January 5, 2022.

The Exhibitor Directory provides oncologists and other health care professionals with information about companies and their products and services. The Exhibitor Directory does not represent endorsement by ASCO, either express or implied, of any exhibitor, product, or service. ASCO does not make any warranty concerning the accuracy or reliability of any information contained in this directory and ASCO disclaims any and all responsibility for and liability relating to all such information. The use of the name, logo, or marks of ASCO is strictly prohibited without the prior written consent of ASCO. The information contained in this directory may not be used in any way with or with reference to ASCO's name, logo, or marks without the prior written consent of ASCO.

☉ denotes Conquer Cancer<sup>®</sup>, the ASCO Foundation Donor as of January 10, 2022.

### **Advanced Accelerator Applications, Inc.**

East Hanover, NJ  
334-509-9307  
[adacap.com](https://adacap.com)

### **AIQ Solutions, Inc.**

Madison, WI  
608-268-7874  
[aiq-solutions.com](https://aiq-solutions.com)

### **ASCO**

Alexandria, VA  
703-299-0158  
[asco.org](https://asco.org)

The American Society of Clinical Oncology and the Association for Clinical Oncology (collectively, ASCO) are committed to the principle that knowledge conquers cancer and represent nearly 45,000 oncology professionals who care for people living with cancer. Through research, education, and promotion of high quality, equitable patient care, ASCO works to conquer cancer and create a world where cancer is prevented or cured, and every survivor is healthy.

### **Astellas Pharma US, Inc. ☉**

Northbrook, IL  
800-727-7003  
[stellasoncology.com](https://stellasoncology.com)

Astellas is committed to turning innovative science into medical solutions that bring value and hope to patients and their families. Keeping our focus on addressing unmet medical needs and conducting our business with ethics and integrity enables us to improve the health of people throughout the U.S. and around the world. Please visit our virtual exhibit experience to learn more. 075-0053-PM

### **AstraZeneca ☉**

Gaithersburg, MD  
301-398-0000  
[astrazeneca-us.com](https://astrazeneca-us.com)

AstraZeneca is a global, science-led biopharmaceutical company that focuses on the discovery, development, and commercialization of prescription medicines, primarily for the treatment of diseases in three therapy areas – Oncology, Cardiovascular, Renal & Metabolism, and Respiratory. AstraZeneca operates in over 100 countries and its innovative medicines are used by millions of patients worldwide. For more information, please follow us on Twitter @AstraZenecaUS.

### **American Society for Radiation Oncology (ASTRO)**

Arlington, VA  
703-502-1550  
[astro.org](https://astro.org)

ASTRO is the premier radiation oncology society in the world, with more than 10,000 members who are physicians, nurses, biologist, physicists, radiation therapists, dosimetrists, and other health care professionals. As the leading organization in radiation oncology, the Society is dedicated to improving patient care through professional education and training, support for clinical practice and health policy standards, advancement of science and research, and advocacy.

### **AVEO Oncology (Commercial)**

Boston, MA  
857-400-0101  
[aveooncology.com](https://aveooncology.com)

### **AVEO Oncology (Medical)**

Boston, MA  
857-400-0101  
[aveooncology.com/product-candidates/pipeline/](https://aveooncology.com/product-candidates/pipeline/)

### **Bayer ☉**

Whippany, NJ  
862-404-3000  
[bayer.us](https://bayer.us)

### **Bayer Medical**

Whippany, NJ  
862-404-3000  
[bayer.us](https://bayer.us)

### **Blue Earth Diagnostics, Inc.**

Burlington, MA  
855-298-6461  
[blueearthdiagnostics.com](https://blueearthdiagnostics.com)

### **Bristol Myers Squibb ☉**

Lawrence Township, NJ  
610-331-2582  
[bms.com](https://bms.com)

Bristol Myers Squibb is a leading global biopharma company focused on discovering, developing, and delivering innovative medicines for patients with serious diseases in areas including oncology, hematology, immunology, cardiovascular, fibrosis, and neuroscience. Our employees work every day to transform patients' lives through science.

**Canadian Urological Association**

Dorval, QC, Canada  
514-395-0376-42  
cua.org

**CancerLinQ**

Alexandria, VA  
703-299-0158  
cancerlinq.org

CancerLinQ, a subsidiary of ASCO, is a mission-driven, non-profit health technology company focused on improving quality of care, improving health outcomes for all patients with cancer, and advancing evidence-based research.

**Caris Life Sciences**

Irving, TX  
866-771-8946  
CarisLifeSciences.com

**Dendreon**

Seal Beach, CA  
877-256-4545  
dendreon.com

**Dendreon Pharmaceuticals Medical**

Seal Beach, CA  
562-343-6069  
dendreon.com

**Eisai Inc. ☉**

Woodcliff Lake, NJ  
201-692-1100  
eisaioncongresses.com/gu/

**Eli Lilly and Company**

Ridgefield, CT  
203-798-9988  
jardiance.com

**EMD Serono / Pfizer Alliance**

New York, NY  
212-733-2323  
bavencio.com/hcp

**Exact Sciences / Oncotype**

Redwood City, CA  
866-662-6897  
oncotypedx.com

**Exelixis, Inc.**

Alameda, CA  
650-837-7000  
cabometyxhcp.com  
Founded in 1994, Exelixis, Inc. (Nasdaq: EXEL) is a biotechnology company that strives to accelerate the discovery, development, and commercialization of new medicines. To ensure you have the latest clinical data, including links to our pivotal trial publications, and important product information, visit our website.

**Foundation Medicine, Inc.**

Cambridge, MA  
617-418-2200  
foundationmedicine.com  
Foundation Medicine is a molecular information company dedicated to transforming cancer care in which treatment is

informed by a deep understanding of the genomic changes that contribute to each patient's unique cancer. The company offers a full suite of comprehensive genomic profiling assays to identify the molecular alterations in a patient's cancer and match them with relevant targeted therapies, immunotherapies, and clinical trials.

**Genentech**

South San Francisco, CA  
650-296-4378  
gene.com

**Gilead Sciences, Inc.**

Foster City, CA  
650-574-3000  
gilead.com

**Harborside ☉**

Huntington, NY  
631-692-0800  
harborsidenexus.com  
Harborside is a medical communications company and publisher of The ASCO Post, Journal of Oncology Practice, JADPRO and JNCCN. The company also manages the advertising sales for ASCO's suite of publications, including the Journal of Clinical Oncology (JCO), the Journal of Global Oncology, JCO Clinical Cancer Informatics, and JCO Precision Oncology. In addition, Harborside also produces live events for practicing nurse practitioners, PAs, and pharmacists, including the JADPRO Live conference.

**Helsinn**

Lugano-Pazzallo, Switzerland  
+41 91 985 21 21  
helsinn.com  
Helsinn is a fully integrated, global biopharma company headquartered in Lugano, Switzerland. It is focused on improving the lives of cancer patients all over the world. The Group has a pipeline of highly innovative oncology assets addressing unmet needs, and a portfolio of supportive care and rare disease therapies. Helsinn is a third-generation family-owned company, that since 1976 has been focused on improving the lives of patients, guided by core values of respect, integrity, and quality.

**Janssen Biotech, Inc.**

Horsham, PA  
800-526-7736  
janssen.com

**Kidney Cancer Association**

Beaverton, OR  
800-850-9132  
kidneycancer.org

**Labcorp Oncology**

Burlington, NC  
608-245-7084  
covance.com

**Lantheus**

North Billerica, MA  
800-671-8109  
lantheus.com

**Merck & Co**  
Kenilworth, NJ  
908-423-1000  
merck.com

**Myovant Sciences & Pfizer - Medical Affairs**

Brisbane, CA  
833-696-8268  
myovant.com

Myovant Sciences aspires to redefine care for women and for men through purpose-driven science, empowering medicines, and transformative advocacy. Our purpose is resolute and fueled by the opportunity to improve the lives of millions of women and men, many impacted by diseases during their most productive years of life.

**Myovant Sciences Inc. and Pfizer Inc.**

Brisbane, CA  
833-696-8268  
orgovyxbooth.com

Myovant Sciences aspires to redefine care for women and for men through purpose-driven science, empowering medicines, and transformative advocacy. Our purpose is resolute and fueled by the opportunity to improve the lives of millions of women and men, many impacted by diseases during their most productive years of life. At Pfizer Oncology, we are committed to advancing medicines wherever we believe we can make a meaningful difference in the lives of people living with cancer. Today, we have an industry-leading portfolio of 24 approved innovative cancer medicines and biosimilars.

**Natera, Inc.**

Austin, TX  
650-489-9050  
natera.com/oncology

Signatera is a personalized ctDNA test for molecular residual disease (MRD) detection and recurrence monitoring in patients previously diagnosed with cancer. Signatera's tumor-informed assay is optimized to detect low levels of ctDNA, with high accuracy in identifying MRD and recurrence with longer lead times. Signatera has been clinically validated in multiple cancer types including colorectal, non-small cell lung, breast, and bladder cancers.

**Nektar Therapeutics**

San Francisco, CA  
415-961-2321  
nektar.com

**Novartis**

East Hanover, NJ  
917-282-4713  
adacap.com

**Pfizer Oncology – Medical Affairs**

New York, NY  
212-733-2323  
pfizeroncologydevelopment.com

At Pfizer Oncology, we are committed to advancing medicines wherever we believe we can make a meaningful difference in the

lives of people living with cancer. Today, we have an industry-leading portfolio of 24 approved innovative cancer medicines and biosimilars across more than 30 indications, including breast, genitourinary, colorectal, blood and lung cancers, as well as melanoma.

**Sanofi Genzyme**

Cambridge, MA  
617-252-7500  
sanofigenzyme.com

**Seagen Inc. - Commercial**

Bothell, WA  
425-527-4332  
seagen.com

**Seagen Inc. - Medical Affairs**

Bothell, WA  
425-527-4332  
seagen.com

**Society of Urologic Oncology & SUO Clinical Trials Consortium**

Schaumburg, IL  
847-517-7225  
sounet.org

The Society of Urologic Oncology's mission is to enable qualified members primarily interested in the care of patients with malignant GU diseases to meet for the purpose of discussion, development, and implementation of ideas to improve care.

**SpectronRx**

Indianapolis, IN  
574-271-2800  
spectronrx.com

**SUN Pharma**

Princeton, NJ  
973-224-7708  
sunpharma.com

Sun Pharma is the 4th largest specialty generic pharmaceutical company in the world, providing high-quality, affordable medicines in over 150 countries. Our mission is to enhance people's lives with innovative and quality generic, branded, and over-the-counter medicines, providing exceptional value in our communities. In the US, Sun Pharma is focused on helping patients in Generics, Dermatology, Oncology, Ophthalmology, and Long-Term Care.

**Telix Pharmaceuticals (US) Inc.**

Fishers, IN  
telixpharma.com

**Tempus**

Chicago, IL  
312-638-6321  
tempus.com

**VERU Inc.**

Miami, FL  
774-217-1355  
veruphama.com





# Stay up to date with **INLYTA<sup>®</sup> (axitinib) + pembrolizumab data**

*To learn more, visit Booth #20*



**FEB 17-19  
2022**



**MOSCONE  
WEST**



Visit the **Merck** and **Eisai** booths  
for more information.

Learn more at [KeytrudaLenvimaHCP.com](https://www.KeytrudaLenvimaHCP.com)



Copyright © 2022 Merck & Co., Inc., Kenilworth, NJ, USA and its affiliates.  
All rights reserved. US-KLR-00215 01/22  
The trademarks used are owned by their respective owners.