

Larger Than Life: A New Era in Live-Events Projection

When you need sophisticated projectors for large-scale events and venues, you want to choose a company that can bring your vision to life. From cutting-edge projectors to state-of-the-art mounts, frames and lenses, your projection partner needs to be able to help you deliver on the high expectations of today's live events.

Epson has the technology you need to fuel your creativity and deliver a world-class experience for your audience. Explore the following partner stories to see why leading artists, performance and worship venues are choosing Epson to turn their visions into breathtaking reality.



EPSON®
EXCEED YOUR VISION

Table of Contents

03

Creating Immersive Experiences

Artists transform venues to turn spectators into participants with technology that engages the senses.

05

Producing One-Of-a-Kind Shows

Event planners create the next viral moment by leveraging advanced projectors that surprise and delight audiences.

07

Captivating Audiences

Organizations make venues come alive with high-quality video and color that exceeds expectations.

09

Innovating with Technology

Push the boundaries of what's possible with cutting-edge technology.

Creating Immersive Experiences

It's not enough to attend events; today's audiences want to become immersed in the experience. Epson projectors have been the secret ingredient for creating larger-than-life festivals and shows.

Mapping the Moment

Partner: Astral Projekt

Challenge

Create an immersive projection experience in the middle of the desert, projecting onto a 360-degree plywood screen, in harsh conditions.

Solution

Epson's robust and reliable laser projectors—and ultra short-throw lenses—created a powerful, vibrant edge-blended projection, with limited heat emission, a critical success factor for the team's custom-built, dust resistant enclosures.

[Read the full case study](#)

[Watch video](#)



[← Table of Contents](#)

Creating Immersive Experiences

Infinity in a 12-foot Cube

Partner: Refik Anadol Media Artist & Director

Challenge

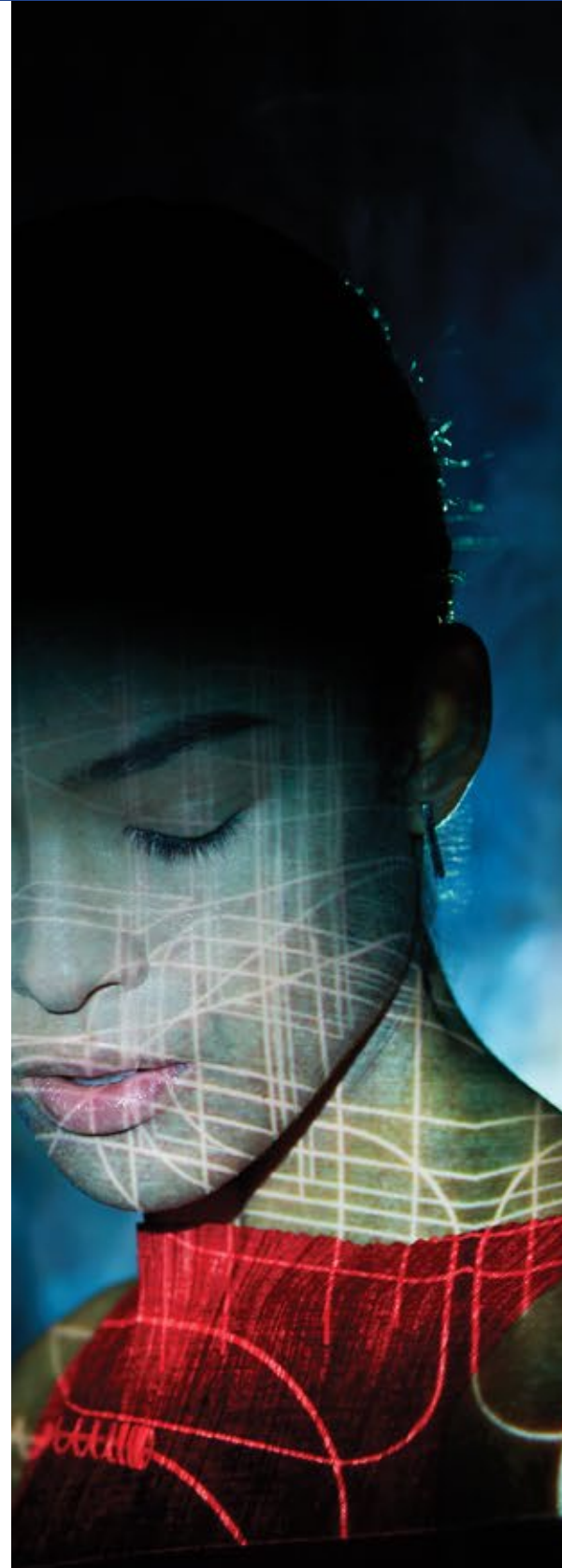
Use multiple high-lumen laser projectors to express the artist's vision and experiential design in a variety of public art installations.

Solution

Epson Pro L-Series laser projectors delivered both quality and consistency in the high volume needed to support the intersection of an artist's vision and sophisticated projection mapping technology.

[Read the full case study](#)

[Watch video](#)



[← Table of Contents](#)

Producing One-Of-a-Kind Shows

Epson projector technology is also creating one-of-a-kind shows that capture an audience's attention.

Over the Top

Partner: University of Nevada Las Vegas (UNLV)

Challenge

Engage UNLV basketball fans with a show-stopping multimedia pre-game show.

Solution

Leveraged the extreme brightness, color depth and accuracy of Epson Pro L25000U projectors to use the basketball court's floorboards as a screen and create an over-the-top fan experience.

[Read the full case study](#)

[Watch video](#)



[← Table of Contents](#)

Image courtesy of UNLV. Photo taken by Zak Krill.

Producing One-Of-a-Kind Shows

Holograms Changing the Landscape of the Live Theater Experience

Partner: BASE Hologram Productions, a division of BASE Entertainment

Challenge

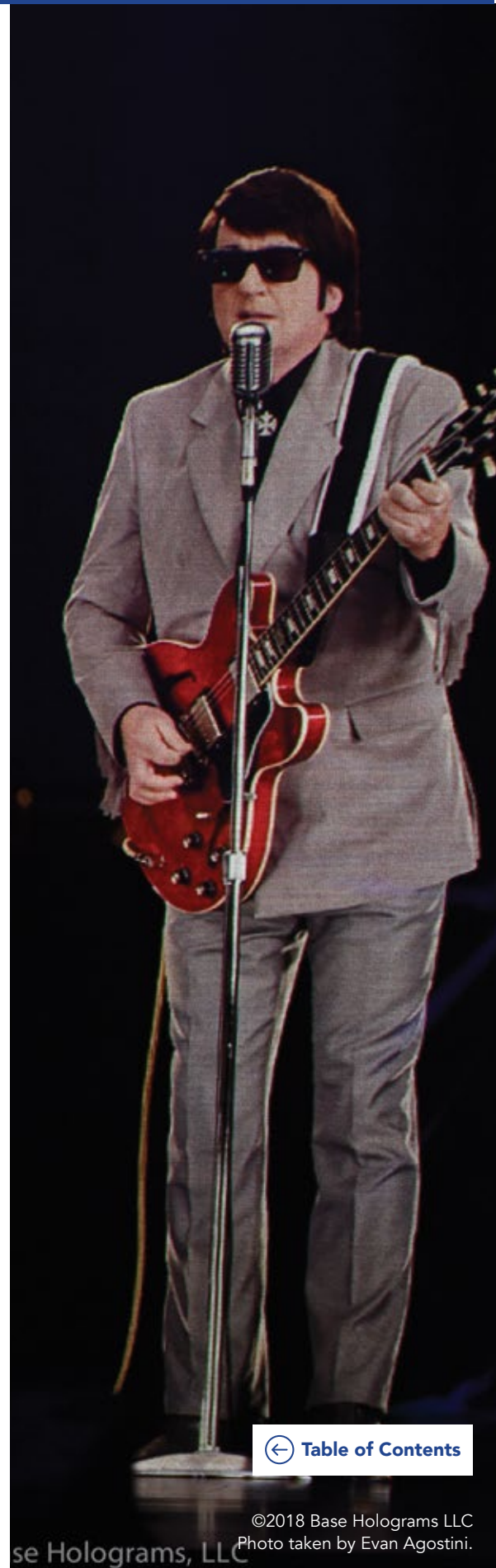
Bring back the excitement and thrill of live musical performances featuring legendary artists, such as Roy Orbison and Maria Callas, giving a new generation of audiences an electric and spellbinding experience.

Solution

Took advantage of the remarkable sharpness and brightness of Epson's new Pro L25000U laser projectors to create a realistic and believable image of the artists on a three-dimensional stage.

[Read the full case study](#)

[Watch video](#)



[← Table of Contents](#)

Captivating Audiences

A picture is worth a thousand words, especially when it's projected onto unexpected places.

The Best and the Brightest

Partner: Nature's Best Photography Windland
Smith Rice International Awards Exhibition

Challenge

Celebrate award-winning nature photography by using projection mapping onto the interior of the Smithsonian's Rotunda.

Solution

Used six Epson Pro L25000U projectors to map the breathtaking images onto a 4-story wall and dome space, while maintaining image quality and impact.

[Read the full case study](#)

[Watch video](#)



[← Table of Contents](#)

Captivating Audiences

Inspiring Experiences

Partner: Hope Church

Challenge

Project custom graphics for a Christmas service in crisp, vibrant colors, especially red, which can be difficult to convey accurately.

Solution

Epson professional installation projectors worked properly right out of the box. Perfect for house of worship projection solutions, it helped create the “stained glass of the 21st century” with band-driven, 360-degree worship experiences that drew in its members with engaging messaging.

[Watch video](#)



[← Table of Contents](#)

Innovating with Technology

From creating a visual oasis in the middle of the desert to bringing legendary singers back to the stage, Epson projectors are up for the challenge. Our proprietary technology is one of the reasons why we're considered the world leader in high-resolution projection, delivering versatility, performance, and dependability.

With Epson's cutting-edge technology, the only limit to what you can do is your own imagination. For rental or staging information or to request a demo, contact Epson today.

