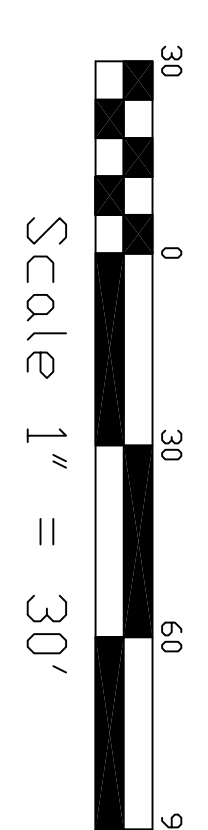
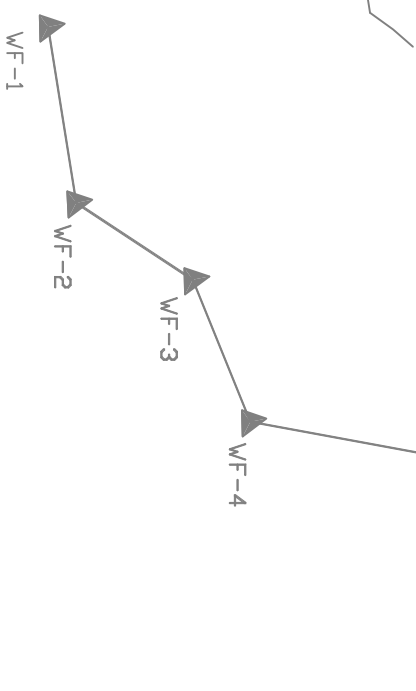
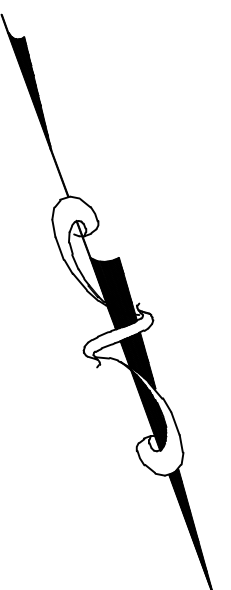
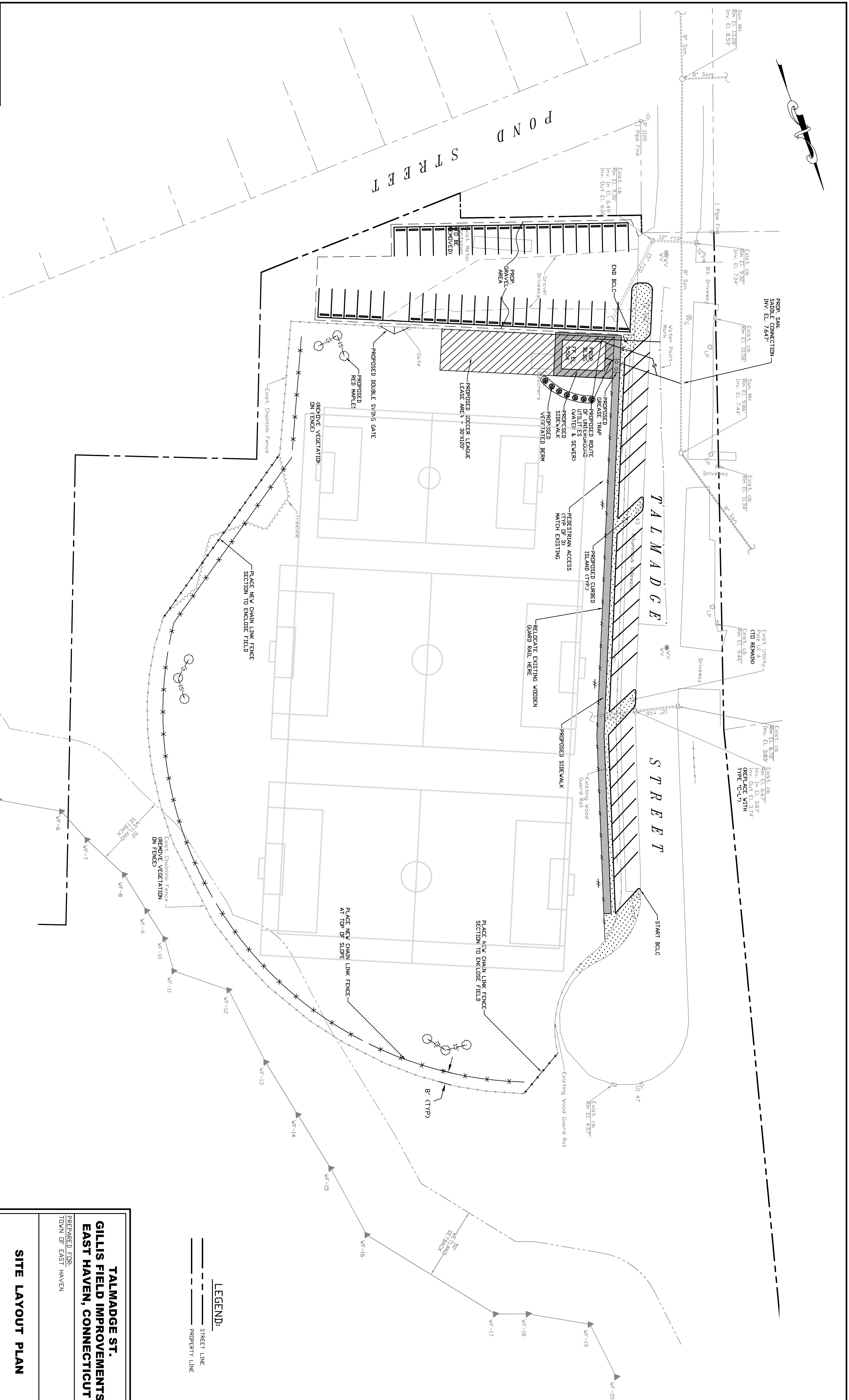


LOCATION AND EXTENSION OF IMPROVEMENTS  
 SHOWN AND SHOULD BE FIELD VERIFIED BY  
 CONTRACTOR PRIOR TO CONSTRUCTION.  
 ANY USE OF REUSE OF MATERIAL OR ALTERNATE  
 CONSTRUCTION METHODS BY THE CLIENT,  
 CONTRACTOR OR OTHER PARTIES WITHOUT THE  
 APPROVED REPRESENTATIVE OF NAJIS &  
 YOUNG ENGINEERS, INC. SHALL BE AT THE  
 OTHER PARTY'S RISK. TO AVOID INADEQUATE,  
 INCOMPLETE OR INCONSISTENT INFORMATION,  
 REQUEST FROM ALL CLIENTS, CONTRACTORS,  
 ENGINEERS, ARCHITECTS AND OTHER PARTIES  
 TO VERIFY THE LOCATION AND EXTENSION OF  
 THESE IMPROVEMENTS.



**LEGEND:**  
 - - - - - STREET LINE  
 - - - - - PROPERTY LINE

**TALMADGE ST.  
 GILLIS FIELD IMPROVEMENTS  
 EAST HAVEN, CONNECTICUT**

PREPARED FOR:  
 TOWN OF EAST HAVEN

**SITE LAYOUT PLAN**

