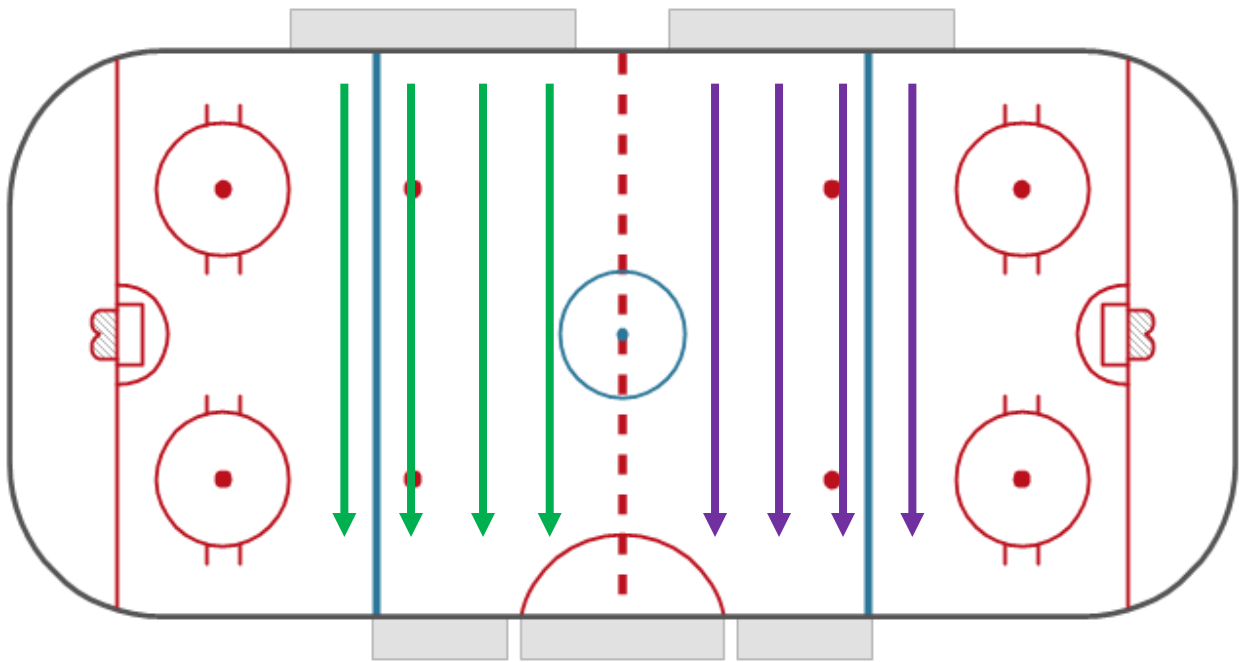


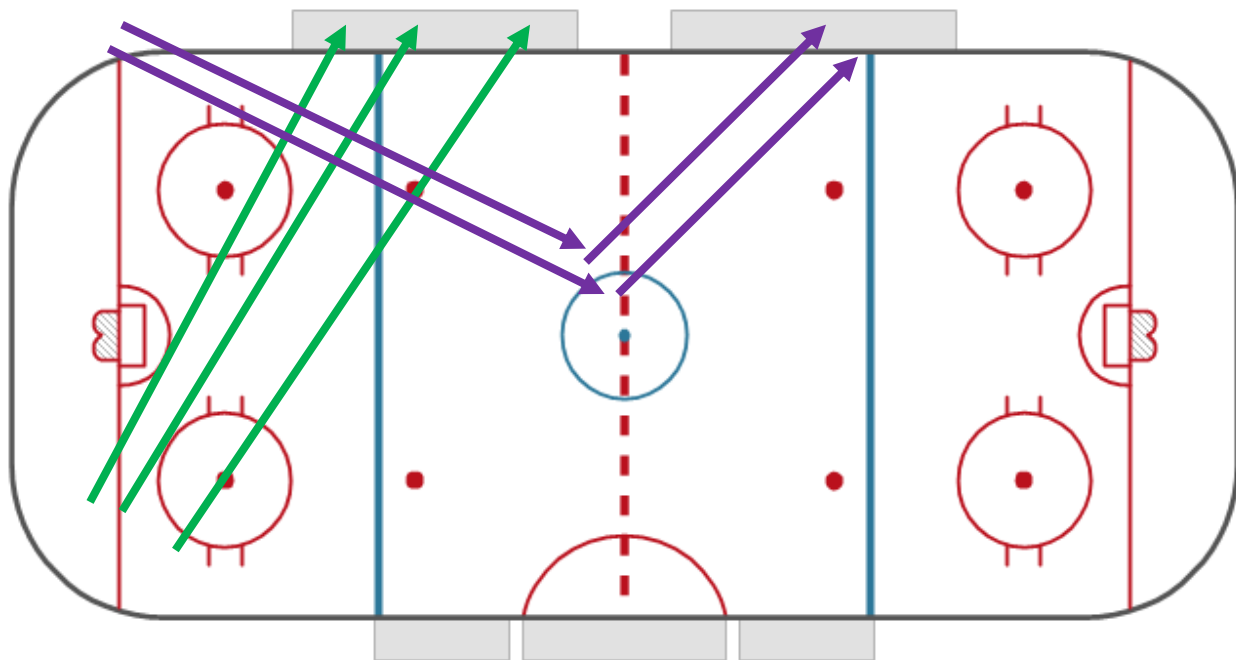


# Locker Room Locations and Transitions

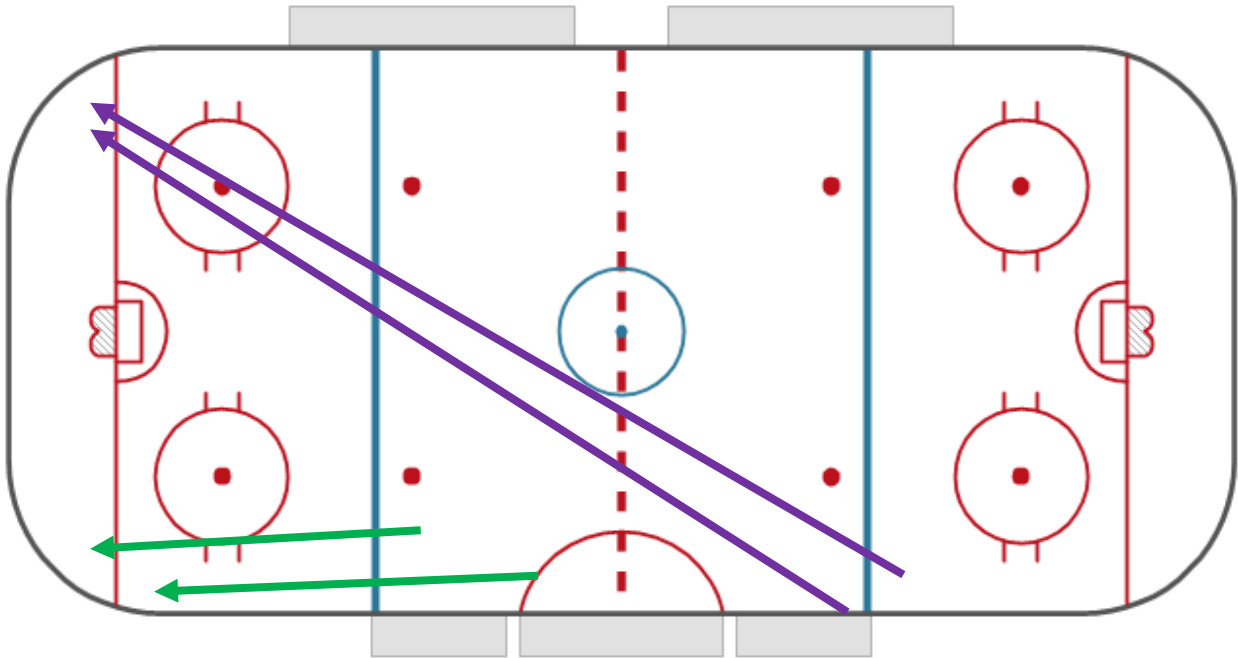
1. Team going onto ice **Next** will get dressed in the Stand 1 and Stands 2
2. When Game is over, Players on ice **will pick up their Hockey Bag** on Bench and skate to penalty box side of rink.



3. Once the teams get to other side of Rink. Oncoming teams will go on to the bench before the Zamboni come on. **YOU MUST BRING YOUR HOCKEY BAG WITH YOU** and put onto the bench.



4. Now the Team on the Ice can get off this ice with their bag and go to the correct stands to get undressed. The same side that you were dressed in.



5. Once Skates are off you are to leave the Rink using the side doors.
6. Stands will be cleaned when Team goes to Bench and before team on ice come off ice to go to the stands.
7. Benches will also be sprayed down before next team goes on bench.
8. Players on bench will then wait for Zamboni to get off the ice to re-enter the ice.
9. Players MUST KEEP Hockey Bags with you from the stands to the bench and back to the stands. There are only 1 team per side in the stands at a time.
10. PLEASE ARRIVE ONLY 15 MINUTES PRIOR to game or practices.

WE MUST FOLLOW THESE INSTRUCTIONS RECOMMENDED BY THE DEPARTMENT OF HEALTH!!!!

The regular locker rooms are closed until further notice.

Thank you,

Bennett Rink Staff and WHYH