



## 2017 Winter Meeting

February 7, 2017

# PAGLA Mission Statement

The mission of the Philadelphia Area Girls' Lacrosse Association, a non-profit organization, is to promote the game of girls' lacrosse in township recreation programs for girls up to eighth grade, by facilitating communication among all programs on:

- coaching techniques,
- rules,
- umpires,
- game schedules and
- other lacrosse events

# 2017 Winter Meeting Agenda

- |                           |          |
|---------------------------|----------|
| I. Introduction           | Ross     |
| II. Administrative Update | Mia/Ross |
| III. 2017 Directives      | Mia      |
| IV. Strategy Workshop     | Ross     |

# 2017 PAGLA Winter Meeting

## I. Overview

II. Administrative Update

III. 2017 Directives

IV. Strategy Workshop

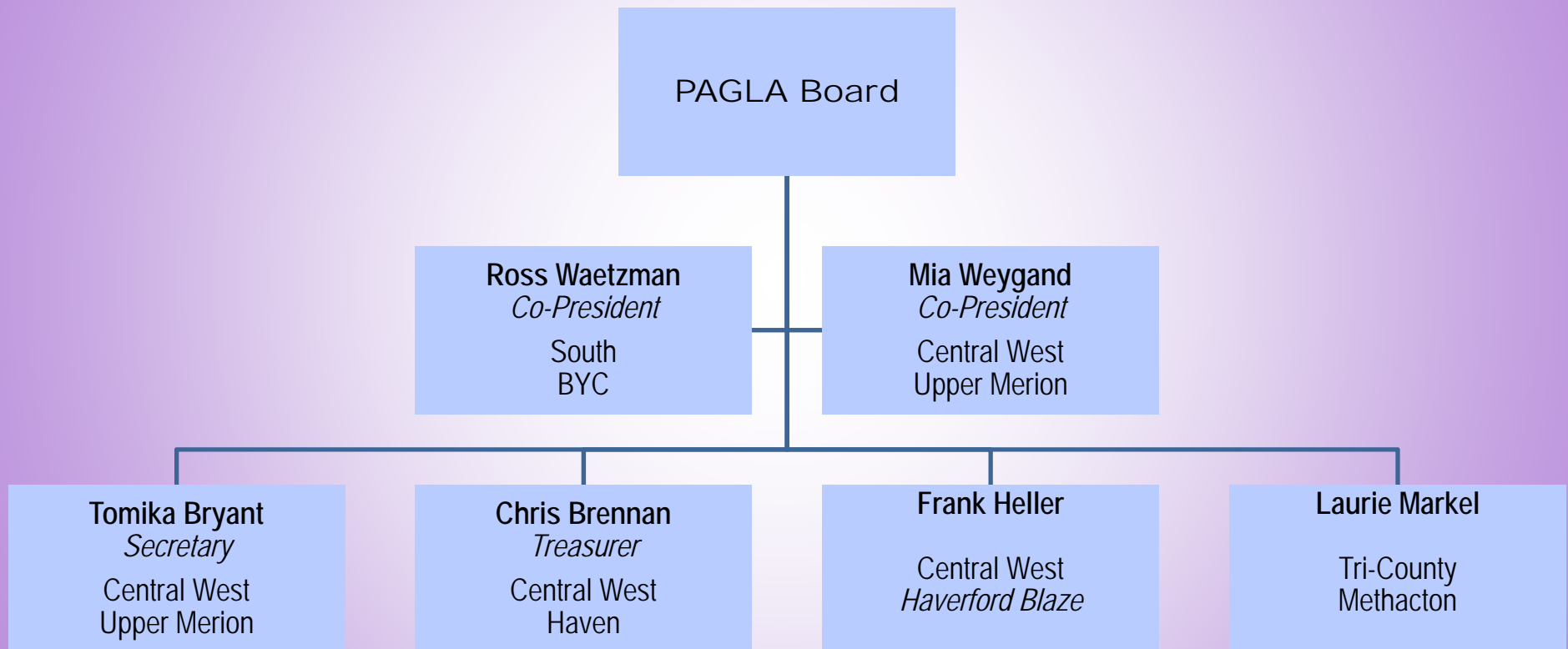
# 2017 PAGLA Winter Meeting

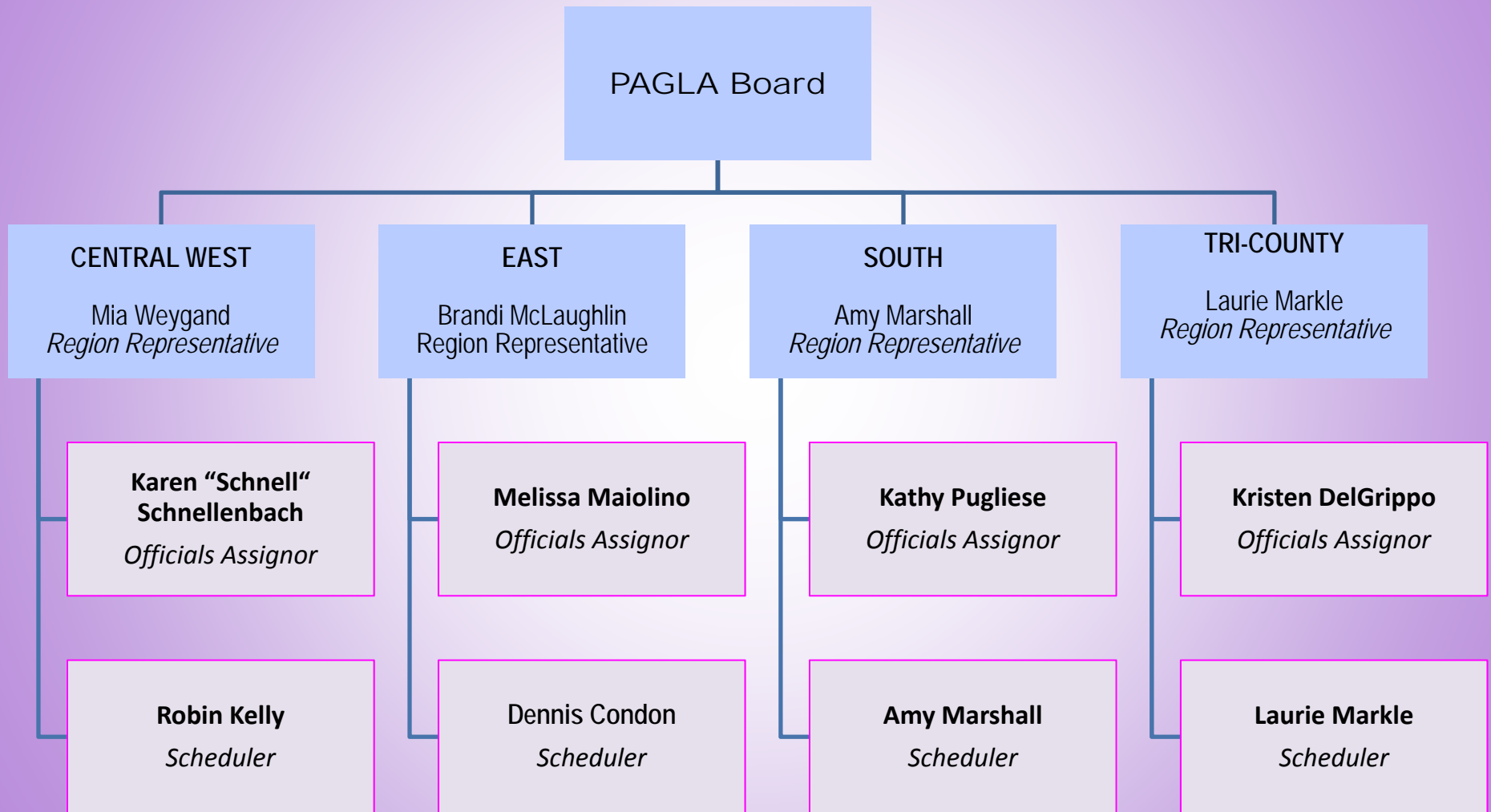
I. Overview

**II. Administrative Update**

III. 2017 Directives

IV. Strategy Workshop





## Division of Responsibilities by Co-Presidents

	Ross Waetzman	Mia Weygand
Regional Coverage	<ul style="list-style-type: none"> <li>• South*</li> <li>• East</li> </ul>	<ul style="list-style-type: none"> <li>• Tri-County</li> <li>• Central-West*</li> </ul>
Functional Focus	<ul style="list-style-type: none"> <li>• Conflict Resolution</li> <li>• Governance</li> <li>• Strategic Direction</li> <li>• Financial</li> <li>• Coaching Training</li> </ul>	<ul style="list-style-type: none"> <li>• Conflict Resolution</li> <li>• Directives</li> <li>• Officiating</li> <li>• Communications</li> <li>• Schedule/Arbiter</li> </ul>
Event Responsibility	<ul style="list-style-type: none"> <li>• PAGLA Play Day</li> </ul>	<ul style="list-style-type: none"> <li>• Seasonal Meetings</li> <li>• Coaches Clinic</li> </ul>

\* Recused from voting on issues specific to these regions



# Calendar Update

# II. Administrative Update

January						
M	Tu	W	Th	F	Sa	Su
						1
2	3	4	5	6	7	8
9	10	11	12	13	14	15
16	17	18	19	20	21	22
23	24	25	26	27	28	29
30	31					

February						
M	Tu	W	Th	F	Sa	Su
		1	2	3	4	5
6	7	8	9	10	11	12
13	14	15	16	17	18	19
20	21	22	23	24	25	26
27	28					

March						
M	Tu	W	Th	F	Sa	Su
		1	2	3	4	5
6	7	8	9	10	11	12
13	14	15	16	17	18	19
20	21	22	23	24	25	26
27	28	29	30	31		

April						
M	Tu	W	Th	F	Sa	Su
					1	2
3	4	5	6	7	8	9
10	11	12	13	14	15	16
17	18	19	20	21	22	23
24	25	26	27	28	29	30

May						
M	Tu	W	Th	F	Sa	Su
1	2	3	4	5	6	7
8	9	10	11	12	13	14
15	16	17	18	19	20	21
22	23	24	25	26	27	28
29	30	31				

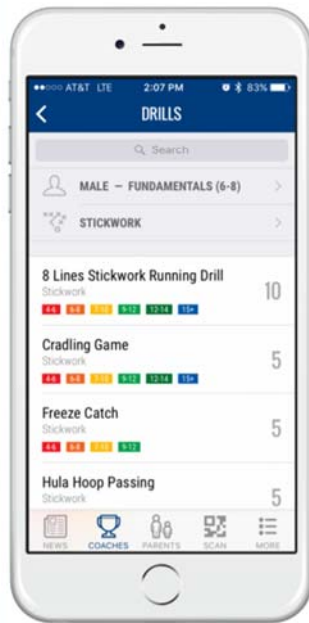
June						
M	Tu	W	Th	F	Sa	Su
			1	2	3	4
5	6	7	8	9	10	11
12	13	14	15	16	17	18
19	20	21	22	23	24	25
26	27	28	29	30		

Event	Date
Deadline: Submission of regional directives to PAGLA	01/15/17
<i>Martin Luther King Day</i>	01/16/17
Deadline: Assigner fees due	01/22/17
PAGLA Winter Meeting (in Upper Merion)	02/07/17
Deadline: Registration of all teams (3/4, 5/6, 7/8)	02/15/17
<i>President's Day</i>	02/20/17
Deadline: Submission of schedules to PAGLA	02/28/17
Deadline: Entry of schedules in Arbiter	03/08/17
Coaching Clinic at Radnor High School	03/11/17
Season Start: 5/6 & 7/8 teams	03/25/17
Season Start: 3/4 teams	04/01/17
<i>Easter Sunday</i>	04/16/17
<i>Memorial Day</i>	05/29/17
PAGLA Play Day	06/03 & 06/04/17
PAGLA Spring Meeting	Targeting: 06/06/17

- Dick's Sporting Goods Support:
  - Up to three free USL Coaching Books per program
  - 20% of coupons good the weekend of March 11 & 12
- March 11 PAGLA Coaches Clinic at Radnor High School
- Feedback on the Jan. 28 LADM Clinic in Wilmington, DE
- PAGLA is working to subsidize a free USL Level 1 coaching clinic
- Mobile Coach (see next slide)

## US Lacrosse now offers Mobile Coach for free!

### DRILLS



Drills are sortable by the following:

- Gender
- Developmental Level
- Lacrosse Skill

Tap on the Male/Female button to select the gender and developmental level.

Tap on the skills button to sort by lacrosse skill.

Tap the drill title to view the drill. Swipe up or down to see the list of available drills. If there is a video associated with the drill an icon will appear in the corner of the drill window. Tap on the icon to view to corresponding video.

For details:

- Download to your iPhone or Android device *OR*
- Go to: [www.uslacrosse.org/coaches/mobile-coach](http://www.uslacrosse.org/coaches/mobile-coach)

# 2017 PAGLA Winter Meeting

---

- I. Overview
- II. Administrative Update
- III. 2017 Directives**
- IV. Strategy Workshop

- Execution for officials:
  - Referee taking draw drops arm & blows whistle to start play as always done
  - Official waits until 1 of 6 players btwn restraining line gets clear possession of ball
  - Official loudly calls, "Possession!" releasing players from the restraining lines
- PER USL: penalty administration for restraining line breaches is similar to that of an illegal draw. Players don't have to go back to original positions, but:
  - ball carrier returns to center
  - All players must be at least 4m from the ball carrier,
  - and direct opponent must be away at a 45 degree angle from the ball carrier
- PER PAGLA Officials: players behind the restraining lines must keep their feet behind the restraining line until "Possession" called. Players can reach over the restraining line with their stick.

- Players may kick the ball as a part of field play on any non-shooting effort
- Players cannot kick the ball into the goal and score
- Players can kick the ball to:
  - move the ball away from opponents;
  - position the ball for easier recovery into the player's stick; or
  - position the ball for easier recovery by a teammate.



### GIRLS PLAYING UP A GRADE (Interim Policy Subject to Vote at the Spring Meeting)\*

PAGLA does not condone girls playing up beyond their designated age group except under extraordinary circumstances; girls seeking higher level competition will be denied a request to play at a higher age group.

Under certain circumstances, youth programs may have a need to have girls play up (e.g., if the program lacks enough players to field a team at an age group). Players requesting to play up should follow the following guidelines:

- Players should not play up more than 1 grade (i.e., only girls in the 2nd, 4th, and 6th, grade will be eligible to play up)
- Players will not be allowed to play up to an "A" level team
- Players must present to the PAGLA Board their request to play up

The PAGLA Board will review player requests to play up and will provide final decisions either granting or denying requests.

\* NOTE: Playing up is prohibited by US Lacrosse directives and may be a violation of USL Insurance

# PAGLA 3/4 Comparison

## III. 2017 Directives

	2016 PAGLA Rules	2017 USL Youth
Age:	Grades 3/4 (9 & 8 yrs. old)	8U (8 & 7 yrs. of age as of August)
Players in a game	7v7; opt. goalie or shot blockers	4v4; no goalie
Field Size	60-70yds x 35-45yds	60-70yds x 305-45yds
Ball type	NOCSEA ball; eyewear required	Soft-type ball (eyewear still required)
Goal Size	6'x6'	3'x3'
Draw	At game start and after goals	No Draw; Def. clears after a goal (similar to basketball)
Restraining line	Midfield line, 2 players per team stay back	No restraining line
Subs	Unlimited number of players at any time during play, after goals, and at half time	No live ball substitutions; whole substitutions after goal or during stoppage of play
GBs	No rule ground ball rule	Loose ball may not be contested by more than 2 girls
Play on ball	1v1 encouraged but not penalized	Must play 1v1 defense
Pass rule:	Depends on region	1 pass rule



# PAGLA 5/6 Comparison

# III. 2017 Directives

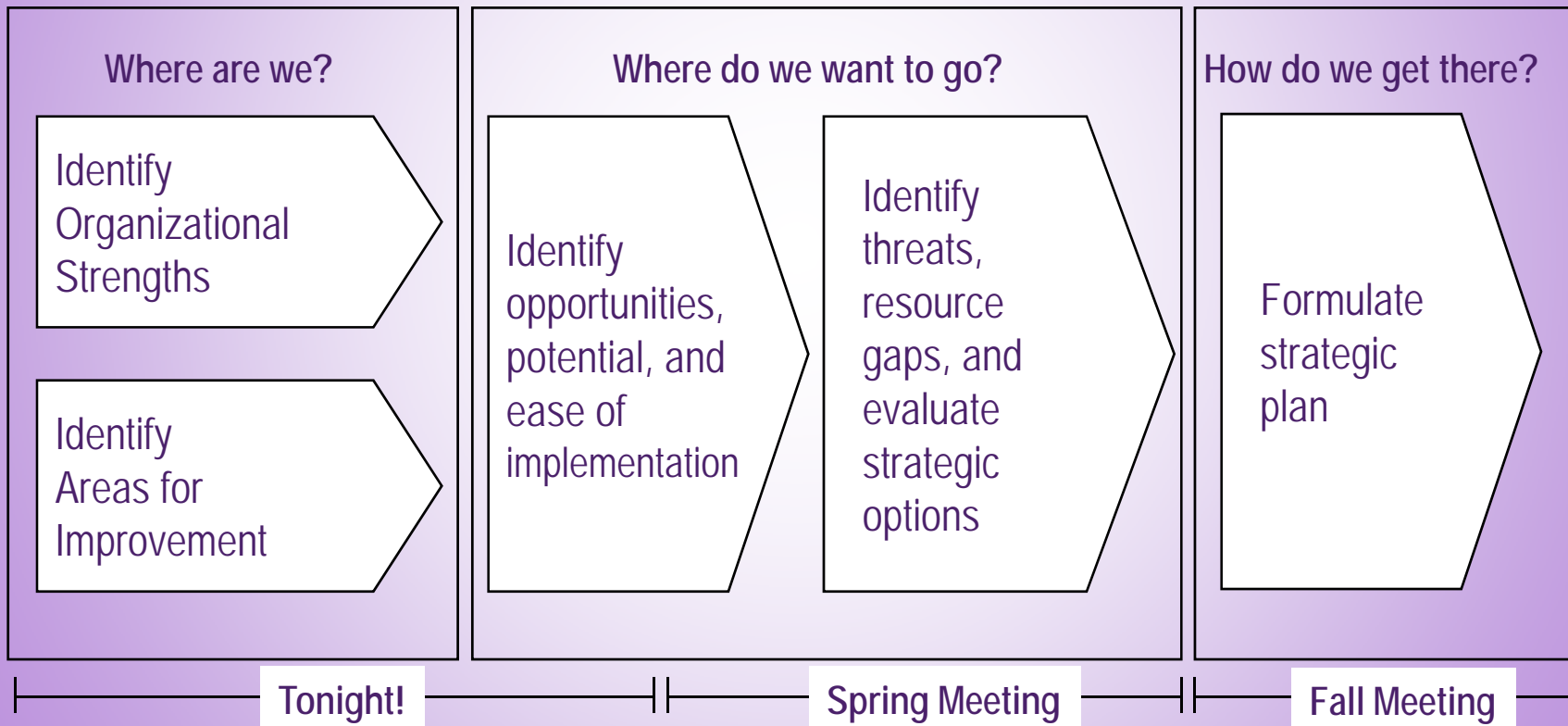
	2016 PAGLA Rules	2017 USL Youth
Age:	Grades 5/6 (11 & 10 yrs. old)	10U (10 & 9 yrs of age as of August)
Players in a game	12v12 including a goalie	8v8 including a goalie
Field Size	Regulation size field w/ all markings	Cross field (60-70yds x 35-45yds)
Ball type	NOCSEA Ball; eyewear required	
Goal Size	6' x 6'	
Draw	At game start and after goals	At game start with new restraining line rules; Goalie clears after a goal
Restraining line	4 players per team stay behind	Midfield line, 2 players per team stay back
Subs	Unlimited number of players at any time during play, after goals, and at half time	Can occur during stoppage of play, whistle, or goal but can occur during play
GBs	No rule ground ball rule	Loose ball may not be contested by more than 2 girls
Play on ball	No restrictions	Must play 1v1 defense
Pass rule	No passes required prior to shooting on goal	
Checking	Modified checking	No checking allowed

	2016 PAGLA Rules	2017 USL Youth
Age:	Grades 7/8 (13 & 12 years old)	14U (14 & 13yrs of age as of August)
Players in a game	12v12 including a goalie	8v8 or 12v12
Field Size	Regulation size field w/ all markings	
Ball type	NOCSEA Ball; eyewear required	
Goal Size	6' x 6'	
Draw	At game start and after goals	Players held behind restraining line until possession called by officials
Restraining line	4 players per team stay behind	
Subs	Unlimited number of players at any time during play, after goals, and at half time	
GBs	No rule ground ball rule	
Play on ball	No restrictions	
Pass rule	No passes required prior to shooting on goal	
Checking	Modified checking	

# 2017 PAGLA Winter Meeting

- I. Overview
- II. Administrative Update
- III. 2017 Directives
- IV. Strategy Workshop**

## Approach



- Great geography!
  - Prestige of lacrosse in Southeast Pennsylvania
  - Quality of volunteers
  - Number of participating programs / players
  
- Strong organizational foundation
  - Current structure (serving its mission for over 15 years!)
  - Regional organization
  - Regional autonomy
  
- Ample resources!
  - People
  - IT (Arbitor / League Athletics)
  - Well Capitalized
  - Access to US Lacrosse as needed

- Key Person Risk  
(challenges of replacing new leaders both at Board & Regional level)
- Governance can be improved
  - PAGLA transparency
  - PAGLA governance systems are 90% in place ... but need to get to 100%
  - Regional autonomy needs to be respected
- Scheduling stands out as a challenge in most (if not all) regions
- Programs are not benefiting from the full geographic scope of PAGLA
- Shortages of good coaches & officials

- Loss of great leaders
- Loss of great programs
- Tension over misunderstandings / miscommunication
- Club lacrosse encroaching on community programs
- Failure to grow lacrosse in PAGLA's geography



- Expanding the Board to diversify responsibilities
- Board needs to review all governance policies/procedures
  - Programs need more time to have say in proposed directives
  - Regional autonomy needs to be respected
- Examine alternative approaches to scheduling
  - Age-group coordinators
  - Scheduling “parties”
- Continue to leverage coaching/official training/resources
- Expand cross-regional activities
  - Dedicating certain weekends to games between different regions
  - All-star programs?



## Strengths

- Great geography
  - strong tradition in lacrosse
  - great people
- Strong organizational foundation
- Ample resources!

## Opportunities

- Expanding the Board to diversify
- Review all governance policies/procedures
- Improve the scheduling activity!
- Expand coach/official resources
- Increase cross-regional activities

## Even Better Ifs ...

- Key Person Risk
- Governance can be improved
- Regional autonomy needs to be respected
- Scheduling remains a drag ...
- Need to leverage PAGLA geography

## Threats

- Loss of great leaders / programs
- Misunderstandings about PAGLA
- Overlap of club & community lacrosse
- Failure to grow regional lacrosse

- Make volunteerism easier:
  - Review directive for forced changes of regional leadership every 2 years
  - Form committee to investigate best practice scheduling in other leagues
  - Increase PAGLA delegation of activities to minimize “key person” risk
- Leverage PAGLA’s regional strength:
  - Have cross-regional games two weeks a season
  - Add an “Elite” level of competition to offset losses to club programs
- Enhance Coaching resources:
  - Have PAGLA sponsor a USL Coaching clinic every year
  - Form a committee to review implementation of USL’s new ADM directives
- Grow lax in our region by IDing new programs seeking to play lacrosse

- Ross will update & distribute the SWOT matrix for program consideration
- Over the course of this season, let PAGLA know your thoughts on:
  - areas that you want improved
  - initiatives you feel would enhance PAGLA
  - other concerns / comments
- The Board will vote on proposed initiatives as follows:
  - Rejected (with reasons stated)
  - Accepted for Fall implementation subject to vote at Spring meeting
  - Accepted provisionally subject to
    - vote at Spring meeting and
    - a 2<sup>nd</sup> vote on implementation approach at Fall Meeting

- Prior to the Spring Meeting, PAGLA will distribute the results of its votes
- At the Spring Meeting, all initiatives (even those rejected) will be floored for discussion and vote
  - Voting will be by program directors (majority to win)
  - Affirmative votes can overrule the Board's vote (if not in violation of any directives)
- Related to initiatives requiring implementation plans
  - Committees will be recruited at the Spring Meeting to research and develop an implementation plans
  - Draft plans will be reviewed by the Board
  - Draft plans will be presented to program directors prior to the Fall Meeting
  - Program directors will vet and vote on these plans at the Fall Meeting

# Questions / Other Matters?

