

# WSLA League Meeting

## June 6, 2017



# Season 2017 Recap

- Eastside Catholic 2017 State Champions!
- 11% overall growth, not including 2<sup>nd</sup> graders
- Nearly 3,300 girls playing lacrosse this season
- Lyndsey Gillis Coach of the Year
- Roosevelt Academic State Champions
- Ballard Sportsmanship Award (Varsity)
- Graham-Kapowsin Sportsmanship Award (JV)
- Team WA won division at WNT

# Budget Recap

- May Umpire fees, End of Season Jamboree income and final U19 Regional Team Expenses still to post
- We expect to break even for the season
- This PPT will be posted on line for you to review Budget slide

# Season Challenges

- Scheduling

# PR/Social Media

- Social Media touches grow
- Interplay with Max Preps and traditional exposure shifted and we are assessing how to shift with it.
- Many more stories in local papers
- SOCIAL MEDIA
  - Instagram -- wa\_glax
  - Facebook --- Washington Girls Lacrosse
  - Twitter -- @WA\_GLAX
- [pr@wslax.org](mailto:pr@wslax.org); pr@waglax.org

# Thank you Lyn Porterfield

- Lyn will be stepping away from her role at WSLA on June 30, 2017
- She will continue as the PNW Regional Manager for US Lacrosse so she will remain supporting and involved with what we are doing
- I am going to miss her immensely

# Welcome Erin Massena

- Erin has been a long time parent in the Snohomish Program, and her last player graduates from WSLA this spring
- Starts July 1, 2017
- Lyn will continue in a paid consultant position as Erin transitions into the role

# Opportunity to Present: Unified Field

## LACROSSE UNIFIED FIELD LINES

Boys & Girls Game • 120 yds X 65 yds\*

Full Field Diagram & Dimensions for 14U & HS Games  
(7th-12th grade players under 19 years old)

### DRAFT PROPOSAL FOR 2017 SEASON

for Boys' & Girls' Game:

- 12 yds GLE to Endlines
- 28 yds GLE to Restraining Lines
- up to 65 yds Full Field Width
- up to 120 yds Full Field Length

for Boys' Game only:

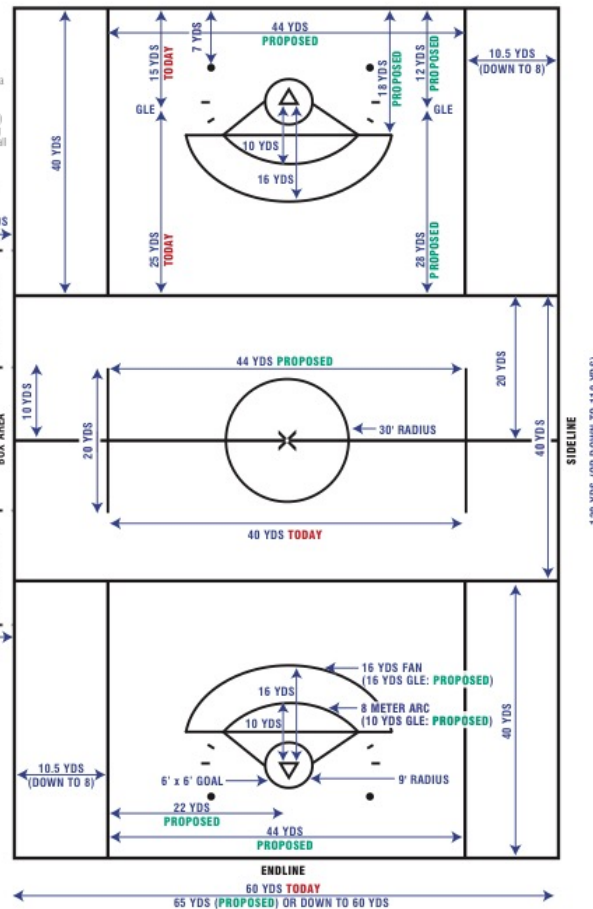
- 44 yds Wing Line Width
- 30 second Clearing Timer (ref's timer) (replace 20-sec. timer + 10-sec. manual count)
- Keep Ball in Box/Offense Goal Area (ref's call discretion, when stalling suspected)
- 30 second Shot Clock (ref's timer) (ref's call discretion, when stalling still suspected & only after Keep Ball in Box has already been called)

for Girls' Game only:

- 8 Meter Arc (new measurement, 10 yds GLE)
- 16 yds Fan (new 12-meter measurement)
- 16 yds above GLE



\*NOTE If 120 yds X 65 yds\* is not available, Mass Bay recommends you reduce field space only between restraining lines at center area of field AND/OR between sideline to wing line areas of field.





# WSLA Work to Do: Scheduling

- WSLA Schedule is only as good as the information we get:
  - Field Availability Challenges
  - Opponent Distance
  - Many black out dates leave little room to play
- WSLA scheduled 1,100+ games
  - » We had 925+ changes to games
- Out of Season Schedule Review -Youth
  - Creating “How to figure out what fields you need” Template
  - Geographic districts of home and Away
  - Allowing programs to schedule some games

# WSLA Work to Do: Re-examine U11

- USL ADM Involvement
- Rulebook from WSLA
- Re-examine the Rules and their progressive development
- Re-examine Scheduling format

Issue to Discuss: Culture Shift

This was a tough season.

**WHY?**

# Events

- Formal complaints increased by 4 fold
- Red Cards of Coaches and Players
- Coaches screaming at each other on sidelines
- Coaches demeaning opponent players
- Coaches sending out their own version of rules
- Hate Speech on the field
- “Hit her harder.”
- Visiting teams/fans demeaning Home team fields and set up
- Inability to discuss incidents that are reported
- Fans cheering when **their** player gets a yellow card
- Parents confronting umpires and opposing coaches
- Umpires leaving field in tears
- Youth game scores of 20 point differentials – over and over and over again
- Vitriolic emails to WSLA, and each other
- WSLA Supervision instituted for communication between teams