

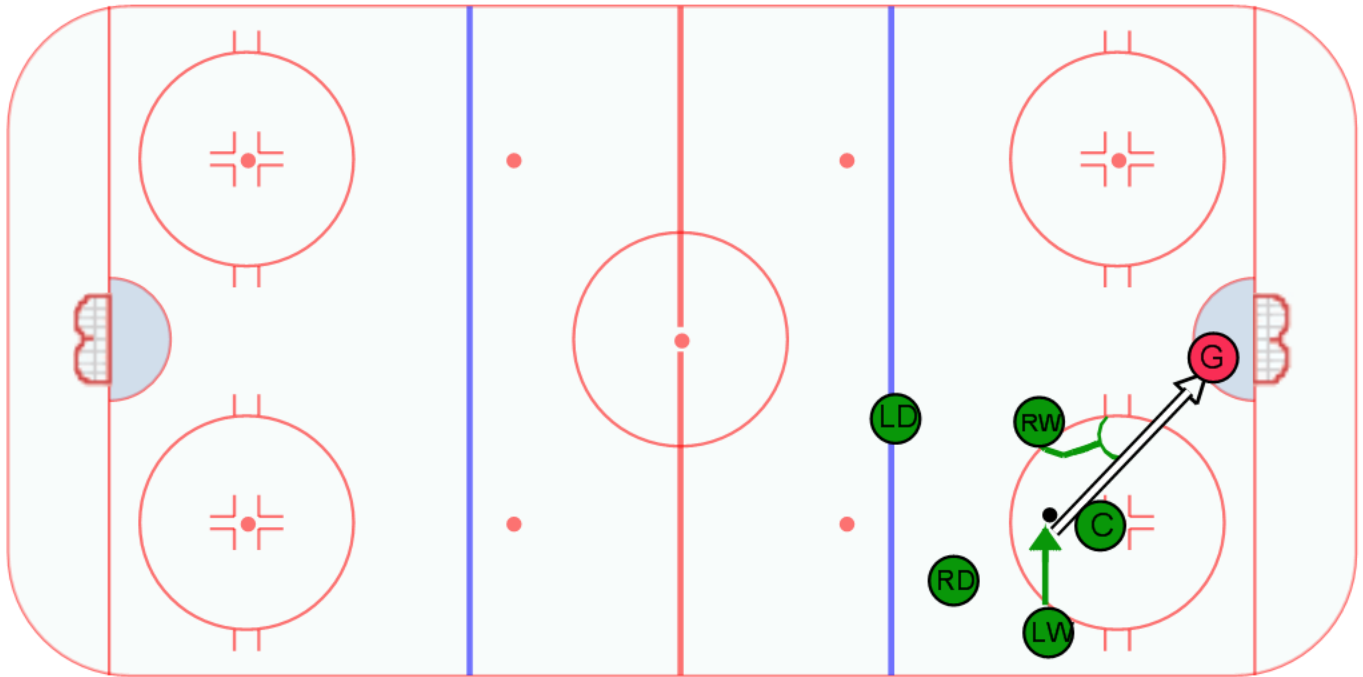
Category #1 :

Title : Switch Wing

Category #2 :

Content elements : _____

Components: _____



Key points :

Description

In this offensive zone face off, the right wing lines up on the left slightly off of the hash marks. The left wing lines up on the right slightly off the hash marks as well. The center tries to get the puck to end up behind him and tie up the opposing center. The left wing moves in at the drop of the puck anticipating the puck to end up behind the center but also ready to help the center out if needed. The right wing gets in the way of any opponent moving out to block the left wing.