

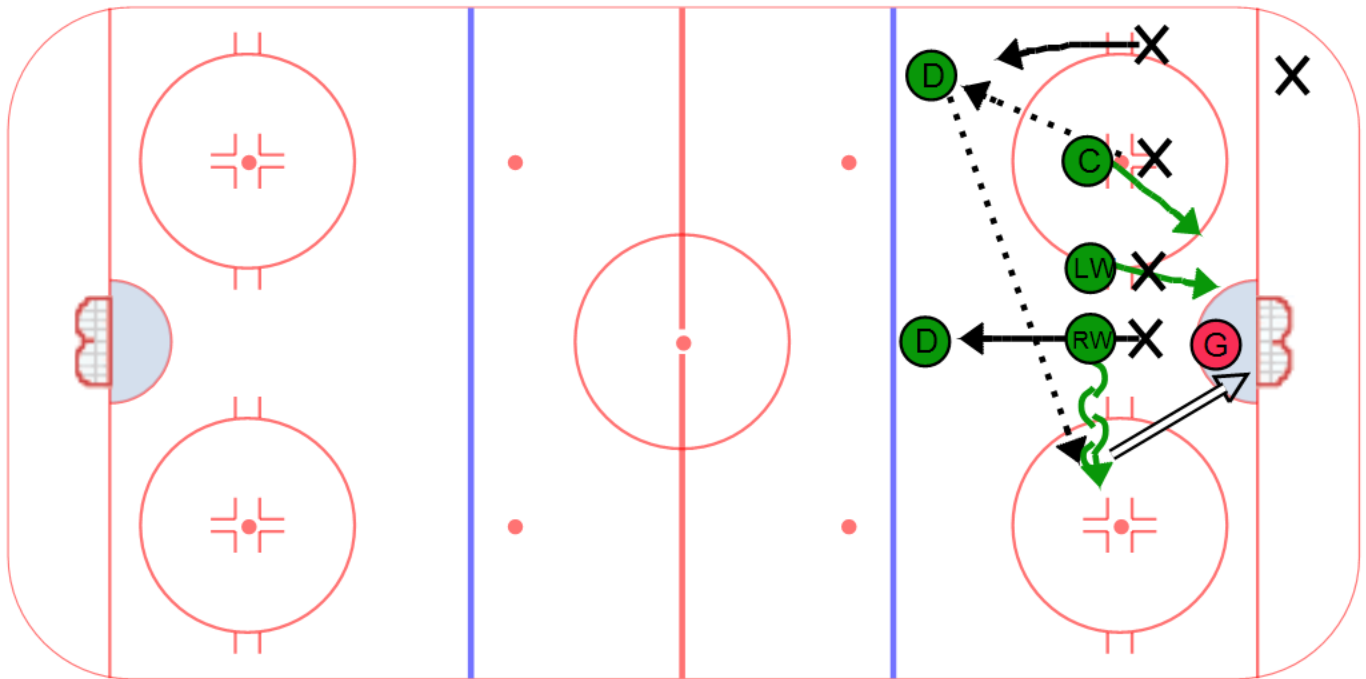
Category #1 :

Title : One Timer to Winger Overload

Category #2 :

Content elements : \_\_\_\_\_

Components: \_\_\_\_\_



Key points :

Description

In this offensive zone face off both wingers will line up in front of the net. Depending on which side the face off is on, the player that is able to open up for a one time shot should match up with the opponent that they think is going out to cover the defense. In this diagram this player is RW. LW will drive to the near post at the drop of the puck and try to take away the goalies eyes right away. The center is trying to win the face off back to the defense along the boards, then drive to the net. RW will get in the opponents way for just a second and then allow them to go out to the point. Once they release the opponent, RW opens up into the seam that is created as the opponent rushes out to the point. The defense then gives RW a pass through this seam for a one time shot.