

Northern Virginia Wrestling Federation

Statistics

Compiled on December 23, 2017

By

Bill Marck

NVWF Secretary

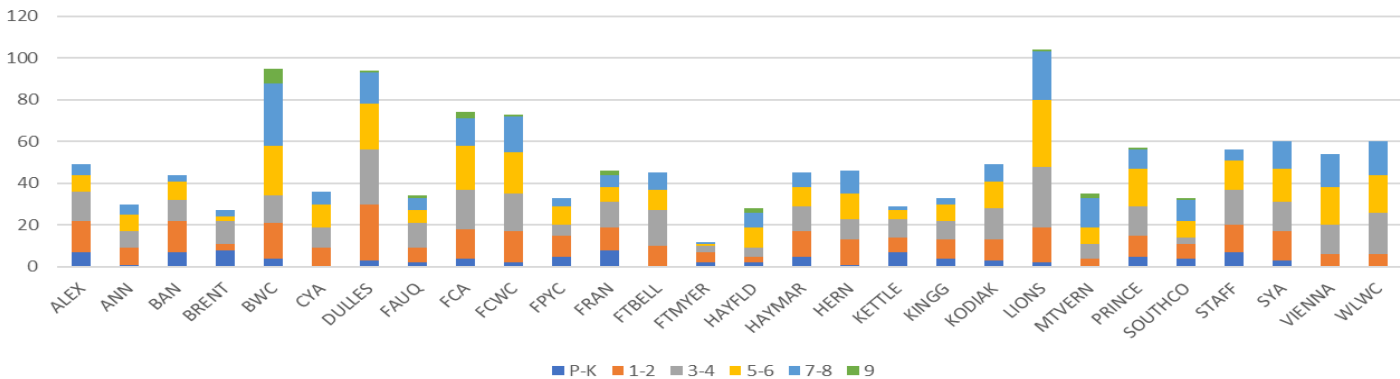
OVERALL NVWF REGISTRANT STATS

GRADES						Which Year of Wrestling Are They In										
P-K	1-2	3-4	5-6	7-8	9	1st	2nd	3rd	4th	5th	6th	7th	8th	9th		
96	296	355	346	266	22	652	311	182	107	68	32	18	8	3	1381	
7.0%	21.4%	25.7%	25.1%	19.3%	1.6%	47.2%	22.5%	13.2%	7.7%	4.9%	2.3%	1.3%	0.6%	0.2%		

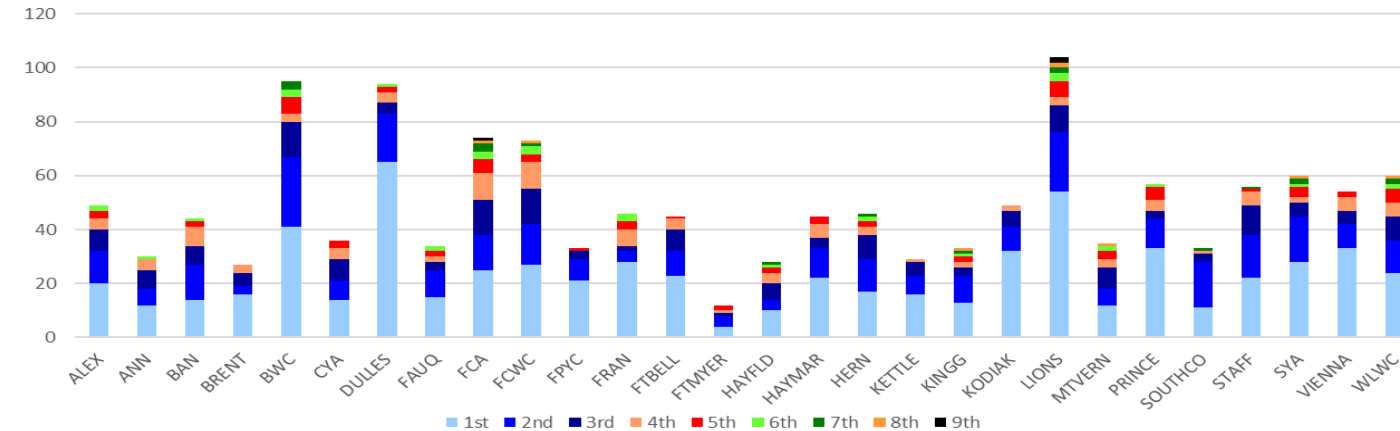
- NVWF stats were calculated based on grades as defined by county schools whereby kids born between September 1st and August 31st of a particular year identifies their assumed grade. Some parents accelerate or adjust their kids grade based on other factors but this was not considered for this calculation.
- NVWF allows kids to register in terms of birth years which subsequently allows younger 9th graders to enter the program that may be born in the spring of 2003. Moreover, NVWF allows kids in birth year 2012 will subsequently brings registrants in the kindergarten and older pre-school grades.
- The stats seen for this year are in family and very similar to those seen in prior years.
- Information was extracted from the NVWF League Athletics system.

OVERALL NVWF CLUB REGISTRATION STATS

NVWF CLUBS BY GRADES



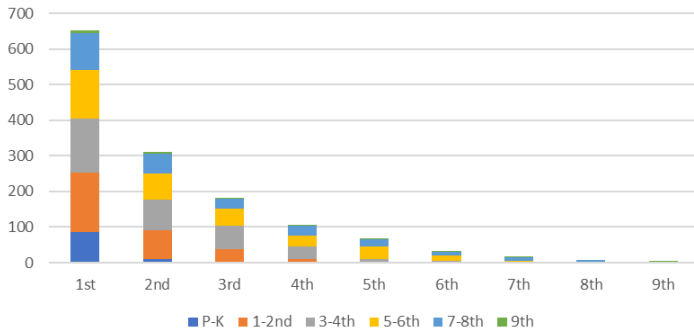
NVWF CLUBS BY EXPERIENCE



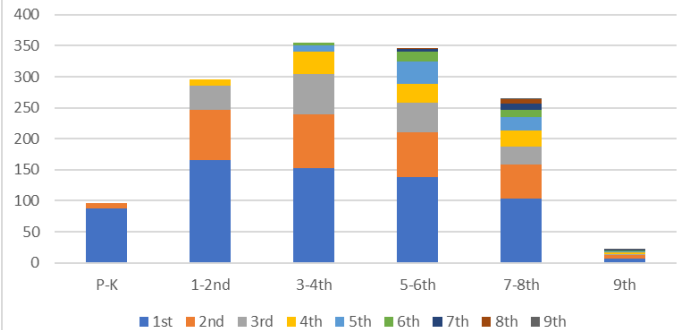
OVERALL NVWF REGISTRATION STATS

CALC	Which Year of Wrestling Are They In									Subtotal
	1st	2nd	3rd	4th	5th	6th	7th	8th	9th	
P-K	87	9	0	0	0	0	0	0	0	96
1-2nd	165	82	39	10	0	0	0	0	0	296
3-4th	152	87	65	36	10	5	0	0	0	355
5-6th	138	72	48	31	36	15	5	1	0	346
7-8th	103	56	28	27	21	11	11	7	2	266
9th	7	5	2	3	1	1	2	0	1	22
	652	311	182	107	68	32	18	8	3	1381
	47.2%	22.5%	13.2%	7.7%	4.9%	2.3%	1.3%	0.6%	0.2%	

NVWF CLUB STATS BY EXPERIENCE



NVWF CLUB STATS BY GRADES



- Calculated grades are based on those born between September 1st and August 31st as defined by county school districts
- NVWF allows ninth graders born in the spring of birth year 2003 to register for youth

OVERALL NVWF CLUB REGISTRATION STATS DETAILS

		GRADES							Which Year of Wrestling Are They In								
	Acron	P-K	1-2	3-4	5-6	7-8	9	1st	2nd	3rd	4th	5th	6th	7th	8th	9th	
1	ALEX	7	15	14	8	5	0	20	12	8	4	3	2	0	0	0	
2	ANN	1	8	8	8	5	0	12	6	7	4	0	1	0	0	0	
3	BAN	7	15	10	9	3	0	14	13	7	7	2	1	0	0	0	
4	BRENT	8	3	11	2	3	0	16	3	5	3	0	0	0	0	0	
5	BWC	4	17	13	24	30	7	41	26	13	3	6	3	3	0	0	
6	CYA	0	9	10	11	6	0	14	7	8	4	3	0	0	0	0	
7	DULLES	3	27	26	22	15	1	65	18	4	4	2	1	0	0	0	
8	FAUQ	2	7	12	6	6	1	15	10	3	2	2	2	0	0	0	
9	FCA	4	14	19	21	13	3	25	13	13	10	5	3	3	1	1	
10	FCWC	2	15	18	20	17	1	27	15	13	10	3	3	1	1	0	
11	FPYC	5	10	5	9	4	0	21	8	3	0	1	0	0	0	0	
12	FRAN	8	11	12	7	6	2	28	4	2	6	3	3	0	0	0	
13	FTBELL	0	10	17	10	8	0	23	9	8	4	1	0	0	0	0	
14	FTMYER	2	5	3	1	1	0	4	4	1	1	2	0	0	0	0	
15	HAYFLD	2	3	4	10	7	2	10	4	6	4	2	1	1	0	0	
16	HAYMAR	5	12	12	9	7	0	22	11	4	5	3	0	0	0	0	
17	HERN	1	12	10	12	11	0	17	12	9	3	2	2	1	0	0	
18	KETTLE	7	7	9	4	2	0	16	7	5	1	0	0	0	0	0	
19	KINGG	4	9	9	8	3	0	13	10	3	2	2	1	1	1	0	
20	KODIAK	3	10	15	13	8	0	32	9	6	2	0	0	0	0	0	
21	LIONS	2	17	29	32	23	1	54	22	10	3	6	3	2	2	2	
22	MTVERN	0	4	7	8	14	2	12	6	8	3	3	2	0	1	0	
23	PRINCE	5	10	14	18	9	1	33	11	3	4	5	1	0	0	0	
24	SOUTHCO	4	7	3	8	10	1	11	17	3	1	0	0	1	0	0	
25	STAFF	7	13	17	14	5	0	22	16	11	5	1	0	1	0	0	
26	SYA	3	14	14	16	13	0	28	17	5	2	4	1	2	1	0	
27	VIENNA	0	6	14	18	16	0	33	9	5	5	2	0	0	0	0	
28	WLWC	0	6	20	18	16	0	24	12	9	5	5	2	2	1	0	
		96	296	355	346	266	22	652	311	182	107	68	32	18	8	3	
		1381							1381								

Key Points or Questions

- Every year roughly one half of the kids are beginners or in their first year of wrestling. So why do many not return?
- Studies show that if you can get a kid to stay with a sport for two full years, there is a good chance they will return in subsequent years.
- Kids in their first and second year of wrestling typically look forward to fun and games, including but not limited to dodge ball, wheel barrel races, monkey rolls, and other mat room games.
- Overall, kids and parents critique the manner in which coaches provide an exciting and positive atmosphere as well.
- NVWF officers have also discovered that clubs with multiple leaders, several coaches, and transition plans have the greatest returns overall – clubs should have “backup contacts and leaders”