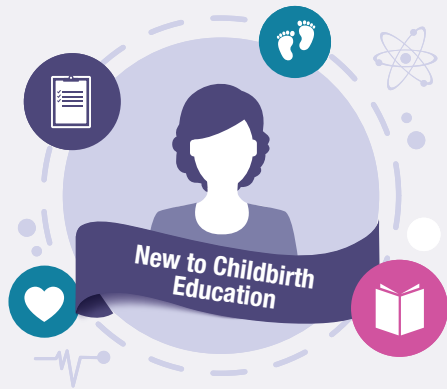


Beginning your Journey to Becoming Lamaze Certified



You are beginning a new career as a childbirth educator.

OPTION 1



Complete a Lamaze-Accredited Childbirth Educator Seminar and self-study with the *Lamaze Learning Guide*

OPTION 2



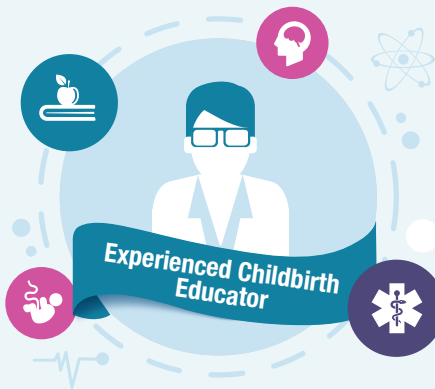
Complete a formal course on teaching childbirth education* **and** do **ONE** of the following:



Complete the four Lamaze Learning Modules



Complete 25 hours of continuing education related to the Lamaze Childbirth Educator competencies



You can document 60 hours of childbirth education teaching experience.

OPTION 1



Complete the four Lamaze Learning Modules

OPTION 2



Complete a Lamaze-Accredited Childbirth Educator Seminar

OPTION 3

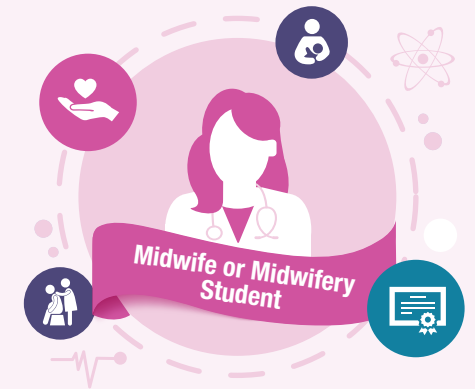


Complete 25 hours of continuing education related to the Lamaze Childbirth Educator competencies

OPTION 4



Complete a formal course on teaching childbirth education*



You have completed or are currently in a midwifery training program.

OPTION 1



Complete the Lamaze Fast Track for Midwives Seminar

OPTION 2



Complete a Lamaze-Accredited Childbirth Educator Seminar

Did you know that Lamaze offers a self-guided online prep course and practice exam?

The Lamaze Childbirth Educator Seminar, which may be required for your pathway, is worth 20 contact hours of continuing education.

Learn more at www.lamazeinternational.org/certify.

*See accepted formal course at certification.lamaze.com/approvedproviders