



# Technical Pathways Program Map

This program helps Software Technical Analysts at Inductive Automation hone their technical abilities to qualify for more advanced positions in the company.

## Phases Throughout the Program:



**Phase 1**  
Onboarding



**Phase 2**  
Training &  
Development



**Phase 3**  
Specialization



**Phase 4**  
Knowledge  
Propagation

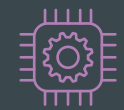
## Divisions in the Program:



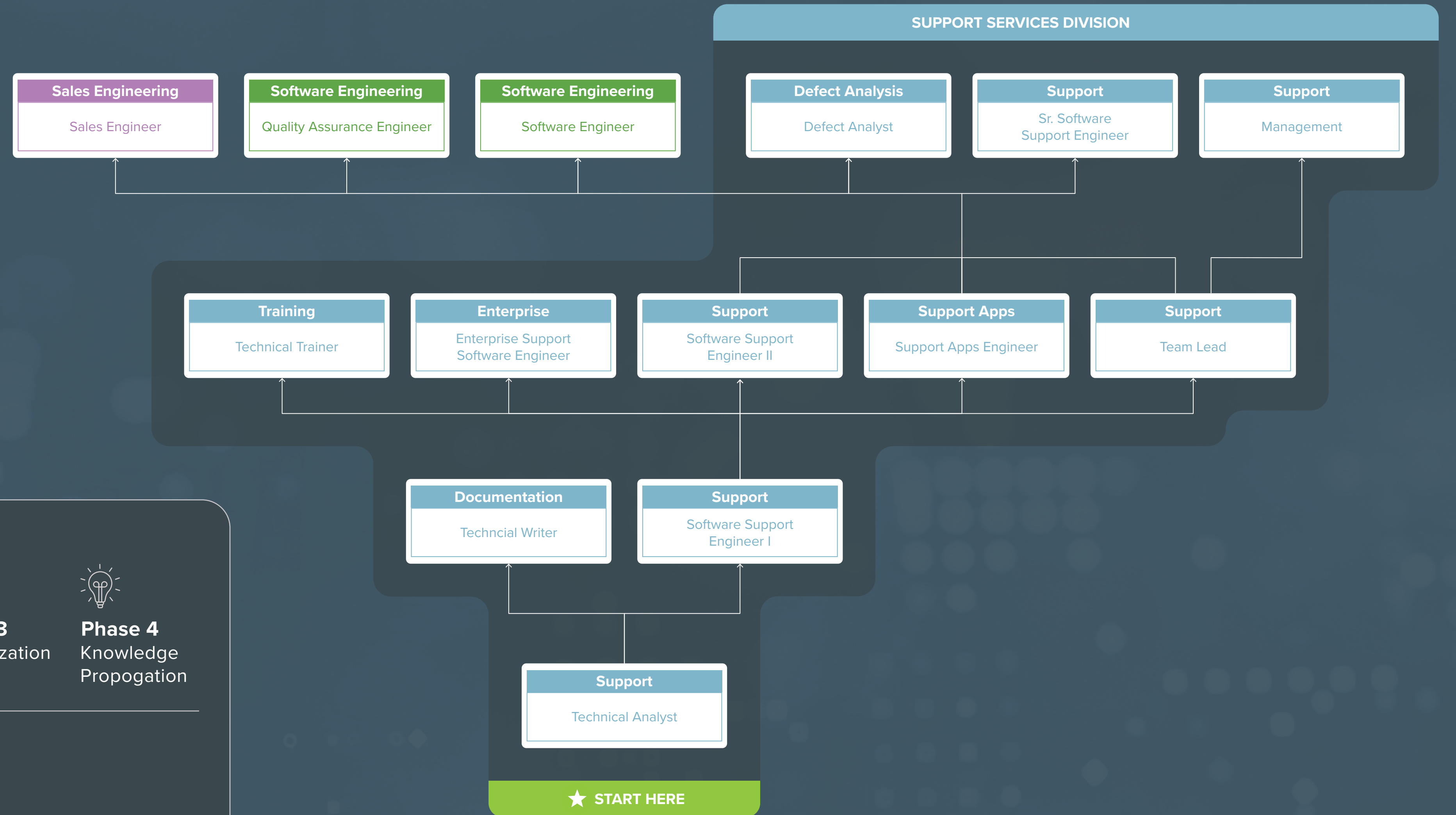
Support  
Services



Software  
Engineering



Sales  
Engineering



Learn more at [inductiveautomation.com/careers](https://inductiveautomation.com/careers)