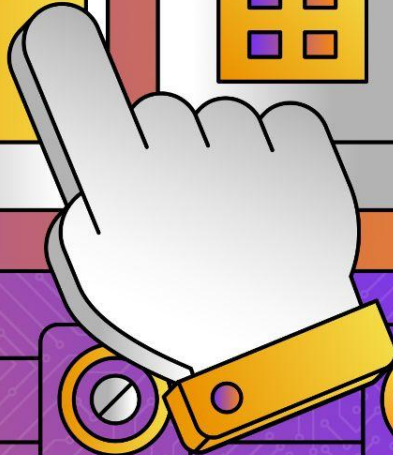
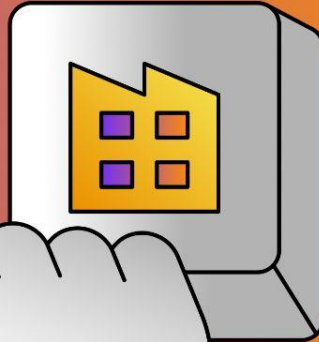
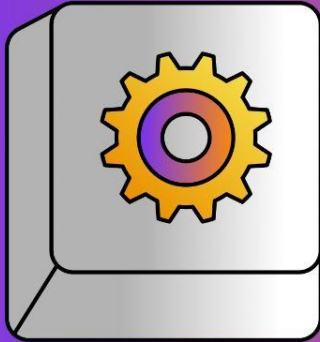
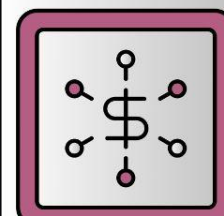
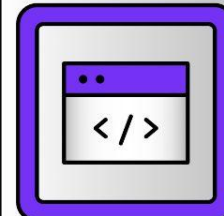


Say **Yes** To Any Automation Project With Ignition



Moderator



Travis Cox

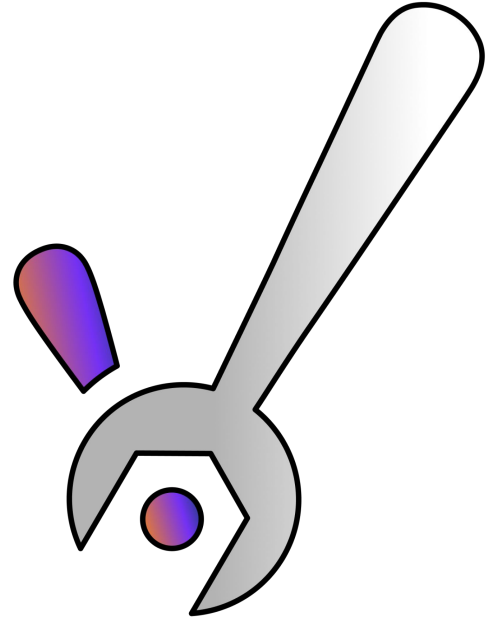
Chief Technology

Evangelist

Inductive Automation

Agenda

- Introductions
- Oil & Gas Project by CSE ICON
- Food & Beverage Project by ATS Global
- Government Project by Avadine
- Plastics Manufacturing Project by Polaris
- Q&A



Guest Speakers



Binh Vu

SCADA Practice
Manager – Ignition
CSE ICON



Kyle Muldoon

Project Manager
Avadine



Derek Simonette

Director of Sales
*Polaris Automation,
Inc.*



Jeremy Gibbs

Sr. Manager, Digital
Solutions, Americas
ATS Global



Pat Smith

Solutions Architect
Avadine

About Inductive Automation



Johnson & Johnson



Chobani

65%
of Fortune 100

4k+
Registered
Integrators

140+
Countries

22+
Years In The
Industry

DFW

FUJIFILM



Crate&Barrel



■ BASF



We've got a great idea!
Can we do this?

Ummm...

Say Yes With Ignition

Connect, Design, and Deploy Without Limits

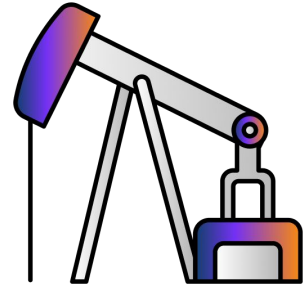
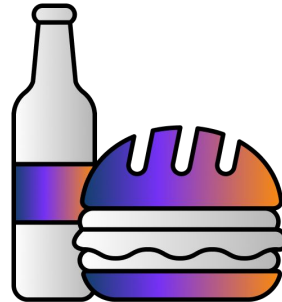
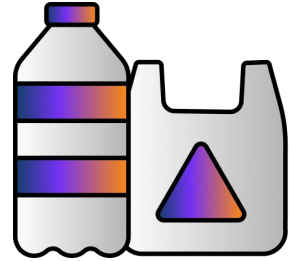
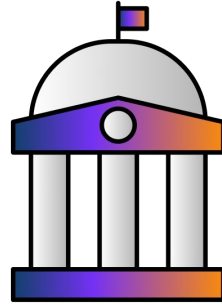
- One central hub for the plant floor and beyond
- Build any kind of industrial application
- Web-deploy to desktops, industrial displays & mobile devices
- Unlimited licensing
- Cross-platform compatibility
- Industrial-strength security & stability



**The Unlimited Platform For
SCADA And So Much More**

Say Yes With Ignition

Let's explore four different projects from different industries to see how Ignition's unique features made them more possible and practical.



Customer Success Story

Ovintiv – Upstream Accelerator for Ignition

The background of the right side of the slide is a grayscale photograph of an industrial facility, likely an oil or gas processing plant. It features large, curved pipes and complex structural frameworks. A prominent red geometric overlay, consisting of several overlapping triangles, is positioned across the middle of the image. In the foreground, a person's hands are visible, interacting with a tablet computer that displays a line graph. Another tablet with a similar graph is partially visible below it.

**BRINGING
PEOPLE &
DATA
TOGETHER**

Customer Success Story

Ovintiv – Upstream Accelerator for Ignition

Situation

Ovintiv, a leading upstream oil and gas company, had difficulty managing its 20+ routes and variability in well configurations, site management techniques, and measurement equipment



Customer Success Story

Ovintiv – Upstream Accelerator for Ignition

Task

Without compromising flexibility, develop a solution that could:

- Unify disparate systems
- Standardize data communications
- Improve efficiency

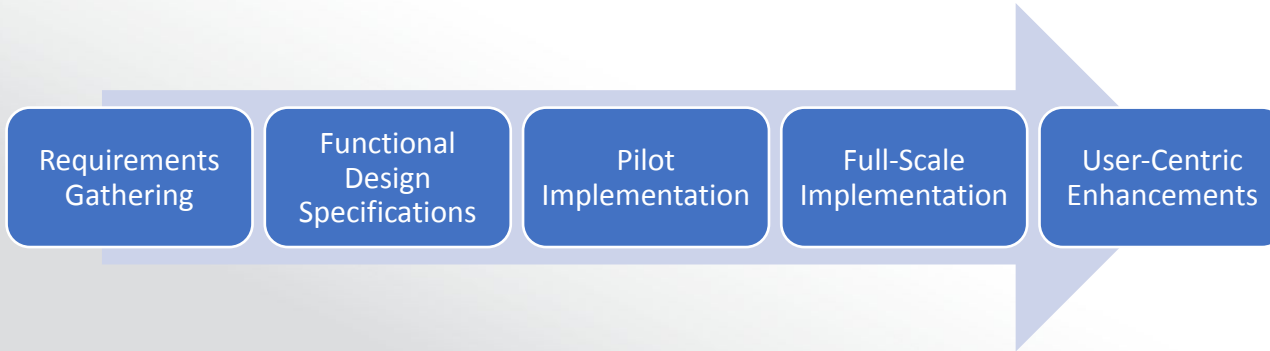


Customer Success Story

Ovintiv – Upstream Accelerator for Ignition

Action

Working closely with Ovintiv, CSE followed a systematic project execution approach to implement its Upstream Accelerator for Ignition framework built on top of Perspective.



Customer Success Story

Ovintiv – Upstream Accelerator for Ignition Results

Ovintiv realized significant efficiency gains related to:

- Database Optimization
- Performance Enhancements
- Development Time Savings
- Improved User Experience

Customer Success Story

Ovintiv – Upstream Accelerator for Ignition

Solution Screenshots

Level 1 – Dashboard



Level 2 – Asset Overview

Light



Dark



Level 3 – Asset Details



OPERATION

DASHBOARD

WELLS

CDP

ALL ALARMS

MY TRENDS

TANKS

LDAR

GAS MEAS

LIQUID MEAS

MAP

PUMP SCHEDULER

MIDSTREAM

ADMIN

Area	Well Count	Avg Static Pr	Fuel YDY	Water Volume	Gas Rate	Gas TDY	Gas YDY	Oil TDY	Oil YDY
Uinta									
Central Basin									
Myton Tribal									

Route	Well Count	Avg Static PSI	Fuel Gas YDY	Water Volume	Gas Rate	Gas TDY	Gas YDY	Oil TDY	Oil YDY
Route A-1									
Route A-2									
Route A-3									
Route A-4									
Route A-5									
Route B-1									
Route B-2									

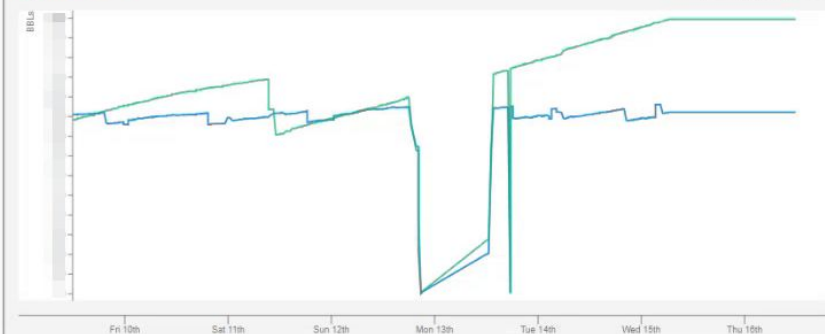
CDP	Avg Static PSI	Water Volume	Oil Volume	Gas Rate	Gas TDY	Gas YDY	Gas Sales Rate	Gas Sales TDY
AUBREY 1A-15 RANCH 16-10 CDP								
AUBREY 2-15 CDP								
BRUCE 2-14 1H CDP								
BRUCE 2-14 CDP								
BRUCE 4-14 DART 13-11 CDP								
CLOSE 4-15 CDP								
EVELYN CDP								
LUCY CDP								
MORRILL 4-23 CDP								
MULLINS 11-14 CDP								
RANCH 15-10 CDP								
STATE 11-5 CDP								
STATE 4-11 CDP								

Trends

Map

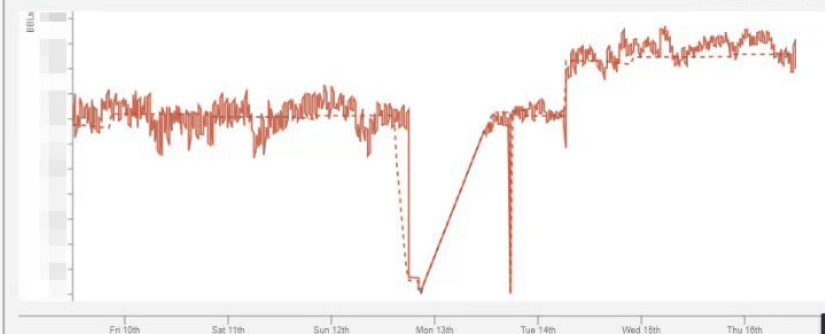
LIQUID TREND - ROUTE A-2 ROLLUP

Last 7 days



GAS TREND - ROUTE A-2 ROLLUP

Last 7 days



1 - Route View

1 - Route View

Central Basin

Route A-1

Select Facility...

Overview

Details

Schematics

Map

Notes

Alarms

Points List

GAS TREND - ROUTE A-5 ROLLUP

LIQUID TREND - ROUTE A-5 ROLLUP

Last 7 days ▾



Last 7 days



Current Flow

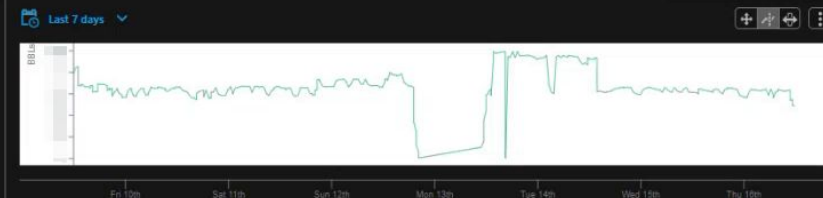
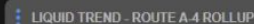
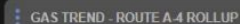
Gas Volume Today

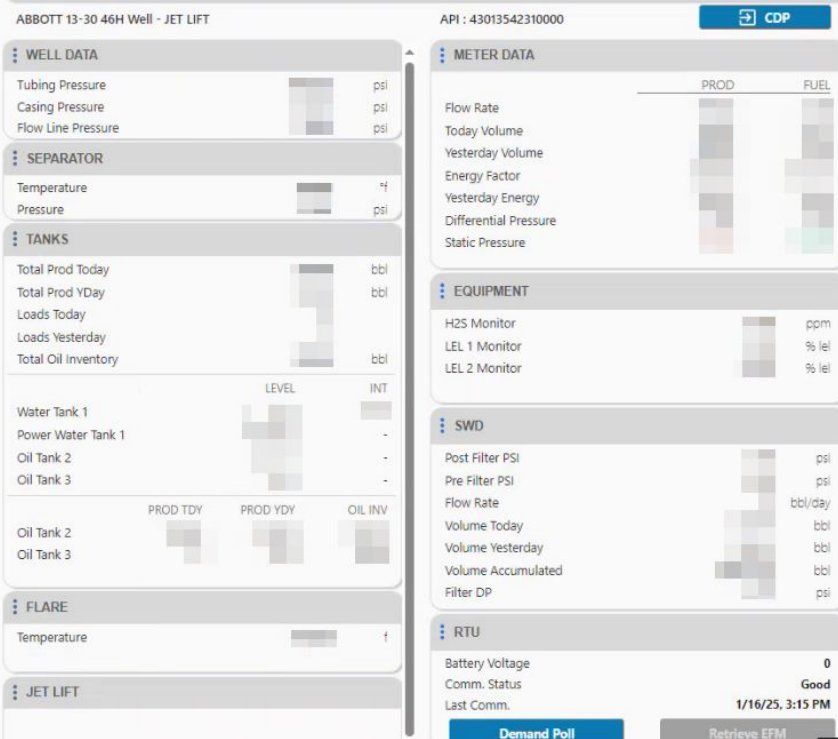
Gas Volume Yesterday

Water Inventory

Oil Inventory

[illegible]

[illegible]



- OPERATION
- DASHBOARD
- WELLS**
- CDP
- ALL ALARMS
- MY TRENDS
- TANKS
- LDAR
- GAS MEAS
- LIQUID MEAS
- MAP
- PUMP SCHEDULER
- MIDSTREAM
- ADMIN

1 - Route View

Central Basin

Route A-1

ACCAWINNA 2W-MW Well

Overview Details Schematics Map Notes Alarms Points List

ACCAWINNA 2W-MW

43013515010000

Tubing

psi

Flow Line

psi

Casing

psi

Jet Lift

Heated 3-Phase Separator

2 Phase Separator

UT93513

Top

10' 7"

6' 0"

UT93509

Top

17' 8"

UT93511

Top

3' 8"

UT93512

Top

14' 1"

ACCAWINNA 7H

43013539200000

Tubing

psi

Flow Line

psi

Casing

psi

Jet Lift

Heated 3-Phase Separator

2 Phase Separator

UT500041

Top

9' 0"

6' 0"

UT203381

Top

18' 1"

UT500039

Top

17' 9"

UT500040

Top

6' 10"

UID

510160283

Flow

mcf/day

UID

510660282

Flow

mcf/day

UID

513510001

Flow

bbl/day

UID

510131583

Flow

mcf/day

UID

510631583

Flow

mcf/day

UID

512431583

Flow

bbl/day

LP Flare KD

LP Flare System

To KM Gas Pipeline

From Fuel Gas Pipeline

PW Pipeline

To Truck Loading

To Truck Loading

To KM Gas Pipeline

From Fuel Gas Pipeline

PW Pipeline

To Truck Loading

To Truck Loading

- OPERATION
- DASHBOARD
- WELLS
- CDP
- ALL ALARMS
- MY TRENDS
- TANKS
- LDAR
- GAS MEAS
- LIQUID MEAS
- MAP
- PUMP SCHEDULER
- MIDSTREAM
- ADMIN

1 - Route View

Central Basin

Route A-1

O N MOON 1-27-3-2 Well

<

>

Overview

Details

Schematics

Map

Notes

Alarms

Points List

Sep 1, 2024

to

Sep 26, 2024

↺

+

Modified Date: 2024-12-11 12:45:00.0

Site: O N MOON 1-27-3-2 Well

Subject: Dispatch

Message: Engaging resources

Created By: amartin

Created Date: 2024-12-11 12:45:00.0

⌵

✎

🗑

Modified Date: 2024-12-11 12:50:00.0

Site: O N MOON 1-27-3-2 Well

Subject: test for now

Message: does it show

Created By: amartin

Created Date: 2024-12-11 12:50:00.0

⌵

✎

🗑

Modified Date: 2024-12-11 13:06:00.0

Site: O N MOON 1-27-3-2 Well

Subject: test3

Message: test3

Created By: amartin

Created Date: 2024-12-11 13:06:00.0

⌵

✎

🗑

Modified Date: 2024-12-11 13:06:00.0

Site: O N MOON 1-27-3-2 Well

Subject: test2

Message: test 2

Created By: amartin

Created Date: 2024-12-11 13:06:00.0

⌵

✎

🗑

Modified Date: 2024-12-11 13:07:00.0

Site: O N MOON 1-27-3-2 Well

Subject: test 1

Message: test 1 test

Created By: amartin

Created Date: 2024-12-11 13:07:00.0

⌵

✎

🗑

Modified Date: 2024-12-11 13:08:00.0

Site: O N MOON 1-27-3-2 Well

Subject: test 1 test

Message: test 1 test

⌵

✎

⬆



ATS Global | Americas Division

IA – Say Yes to Any Automation Project

Jeremy Gibbs

The challenge...



Food Manufacturer

- Controls and SCADA upgrade for multiple ovens
- Awarded project BUT lost internal SME and external resources involved
- Licensing for every oven/PC



Scalability

- Remove multiple platforms for control, monitoring, and recipes
- Quick and easy rollout from one oven to the next
- Future options for optimization



Restrictions

- NO unscheduled downtime
- NO major changes to the interface (change management)
- NO “black box” oven PC controls information



Education

- “We picked Ignition but...”
- “How do we set up...”
- “What is the best way...”

The Ignition platform gives ATS the ability to say “Yes” even without all the details

Stand Alone Capability

- **Universal platform** – User interface, alarms, control, reporting, etc. to match current system
- **Web-based development** – can launch on any client - including the existing PCs
- **Process Control** – monitor and control equipment without need for multiple platforms

Change Management

- **Ignition Vision** – can create similar “look and feel” to legacy stand alone HMIs
- **Learning curve** – minimize the change to workforce, program functionality within a single platform

Flexibility and Scalability

- **Modules or code** – regardless of legacy system architecture, options exist for communication, control, alarms, and recipes
- **Unlimited Tags, Unlimited control** – minimize the need for multiple licenses and data collection

The solution...



Ignition Vision

- ATS created a unified application for SCADA and oven control that replaced multiple systems
- Single Ignition gateway with redundancy that met IT standards and security
- Removed dependence on legacy Windows environment



Push Button, Make Sausage

- Replace the “black box” recipe system functionality that utilized decoded text files paired with PLC data with SQL database and inherent Ignition controls. Reduce number of steps to make product
- Incorporation of oven damper controls for manual operation and automatic operation with feedback for dynamic changes

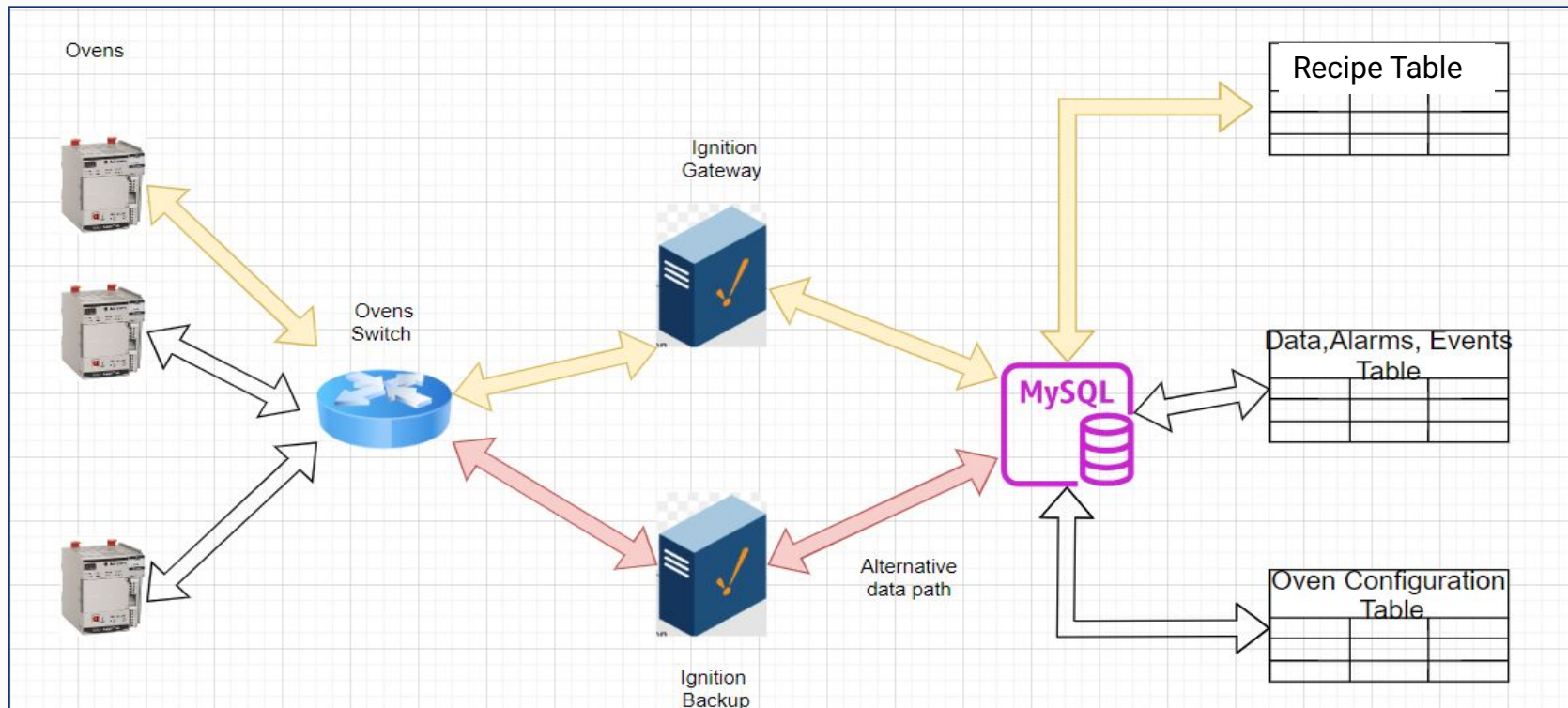


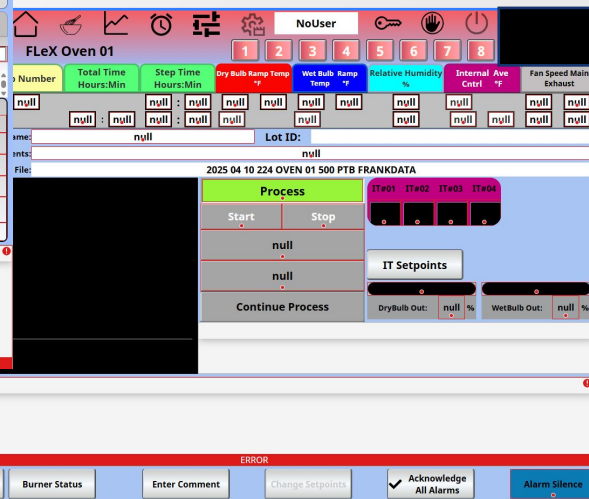
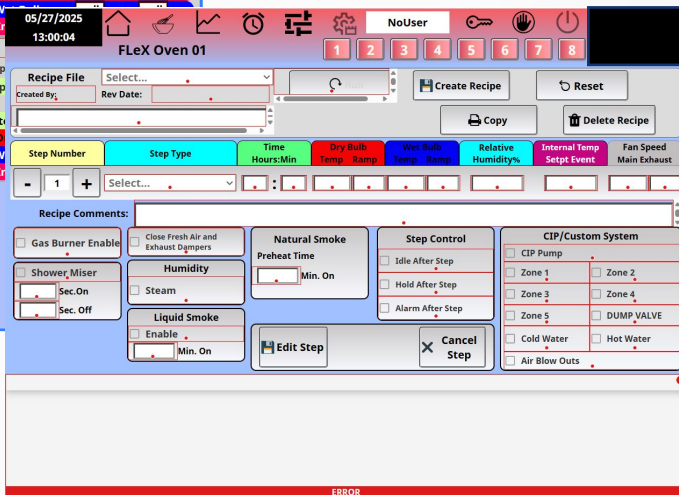
Empower Operators

- Use of scripting for calculations and data manipulation to minimize user interface modifications and operator SOPs
- Template solution so operators can work any oven/station
- Allow recipe edit and creation with additional functionality from the control system upgrade



Consolidation and Simplification of Data Flow





Yes equals Success!



Trust

- We listened and provided a viable solution with minimal impact
- Met requirements from shop floor to top floor
 - Set the stage for future improvements



Empowerment

- Operators can control and make adjustments locally
 - No SME required
- Minimal learning curve
- Faster decision making



Rapid Deployment

- IT Approved
- Simple Architecture
- Deployed and tested 7 remaining ovens in a fraction of the time of the 1st without downtime

The Independent Solution Provider for **Smart Digital Transformation**

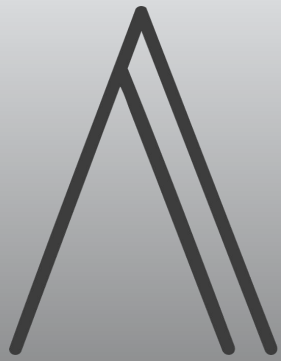


Jeremy Gibbs

Senior Manager, Digital Solutions and Data Centers

Jeremy.Gibbs@ats-global.com
317.749.3028





AVADINE

From Fragmented BDAs to a Single Pane of Glass with Ignition

Avadine Technical Brief



AVADINE

Project Overview

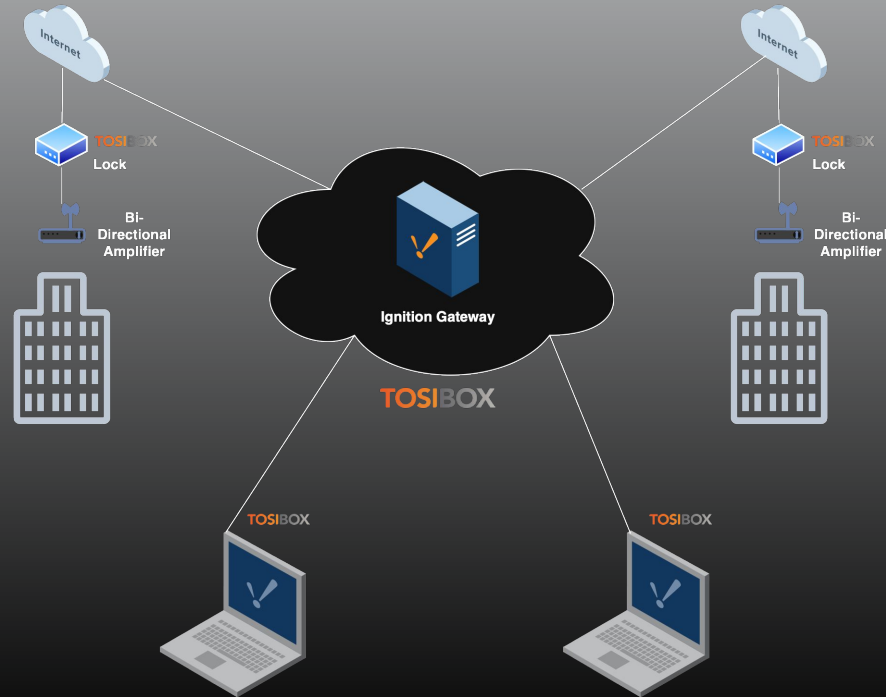
- **230+ in-building Bi-Directional Amplifiers (BDAs) supporting public-safety first responder radio network**
- **Objectives: real-time health, remote shutdown, FedRAMP-aligned security**
- **Constraints: multi-vendor hardware, zero downtime, tight budget**

Architecture at a Glance

- Kymera SNMP driver → Ignition Gateway (GovCloud)
- Tosibox VPN mesh secures tunnels from every BDA site
- Native GIS Map panel with GPS-tracked status
- UDT templates auto-generate tags & screens for each location
- Alarm pipelines dispatch SMS/email in <60 seconds



Architecture at a Glance



AVADINE

Why Ignition Made It Possible

- Unlimited licensing kept fleet-scale costs predictable
- Open driver architecture accepted Kymera SNMP module out of the box
- Built-in GIS component eliminated third-party mapping solutions
- Scripting & UDTs slashed engineering effort (230 sites onboarded in 6 months)
- Web-first design served OT & IT stakeholders alike

Outcomes & Key Lessons

- Alarm detection: >2 hours → <1 minute; manual site visits ↓ 90%
- Zero RF-interference incidents since cutover
- Standardize devices early; hardware VPNs simplify security
- Exploit Ignition's native GIS & unlimited licensing to scale confidently
- Questions? Contact us: info@avadine.com 661.379.0529





SAY YES

to Any Automation Project with Ignition

How Polaris Automation Delivered
Scalable Batching with Ignition

Derek Simonette, Director of Sales, Polaris Automation

POLARIS
AUTOMATION™

Project Overview

Client: Ohio-based plastics manufacturer

Challenge:

Replace manual batching with an interim digital solution

Goal:

Eliminate paper travelers, automate batch records, simplify operator workflow

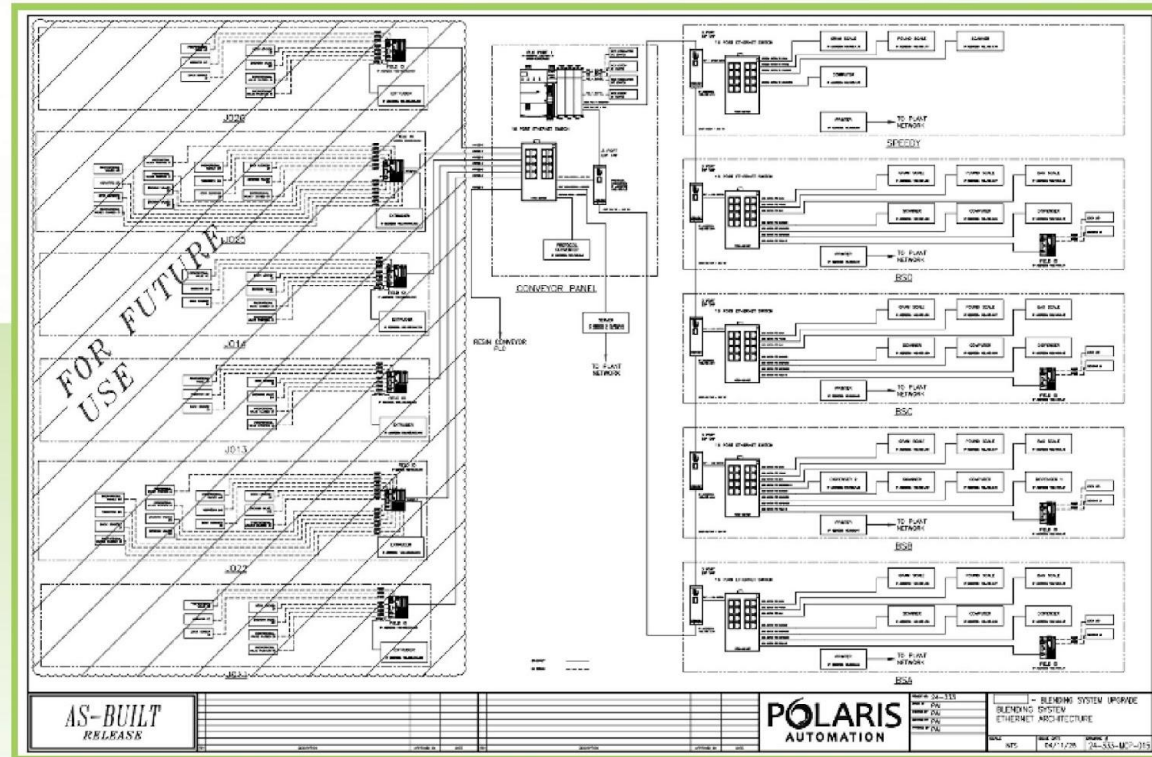
Approach:

Rockwell PLCs, Ignition, and SQL-based solution

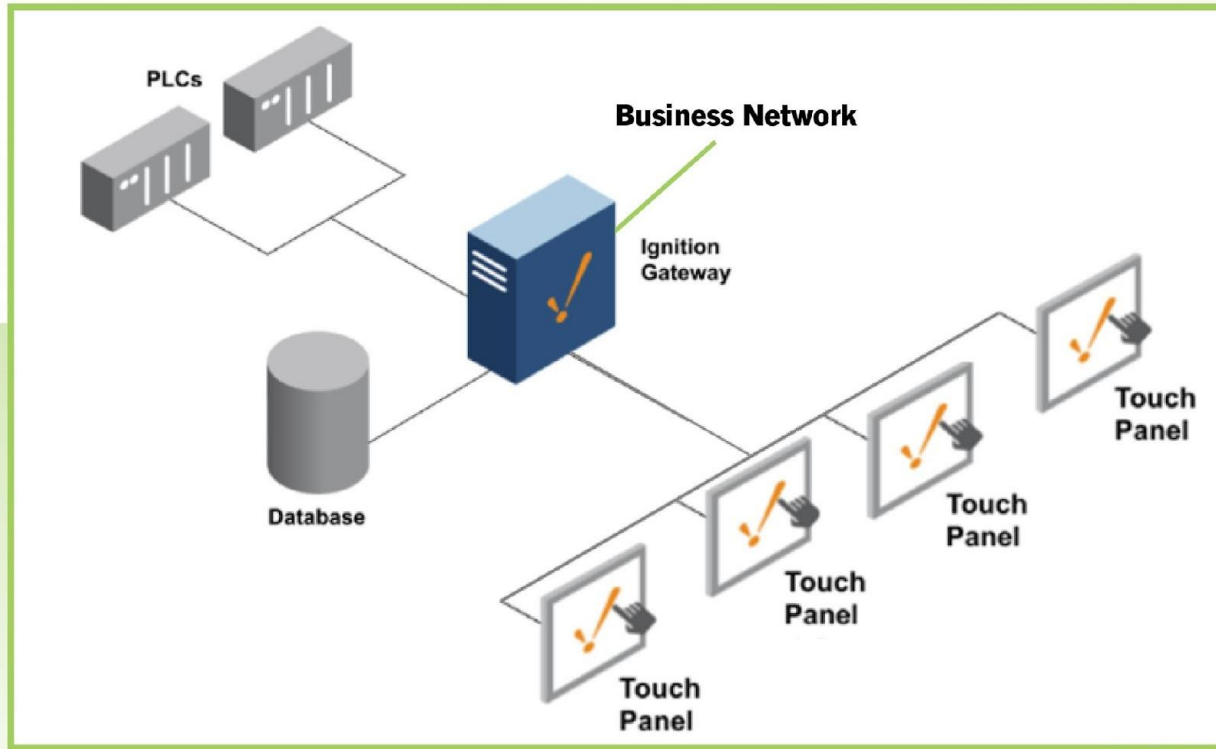
Ignition Architecture

- Primary server with dual NIC (Business <—> OT network)
- 5 blending workstations with unique Ignition features
- File read/write access to shared network folders

Ignition Architecture



Ignition Architecture



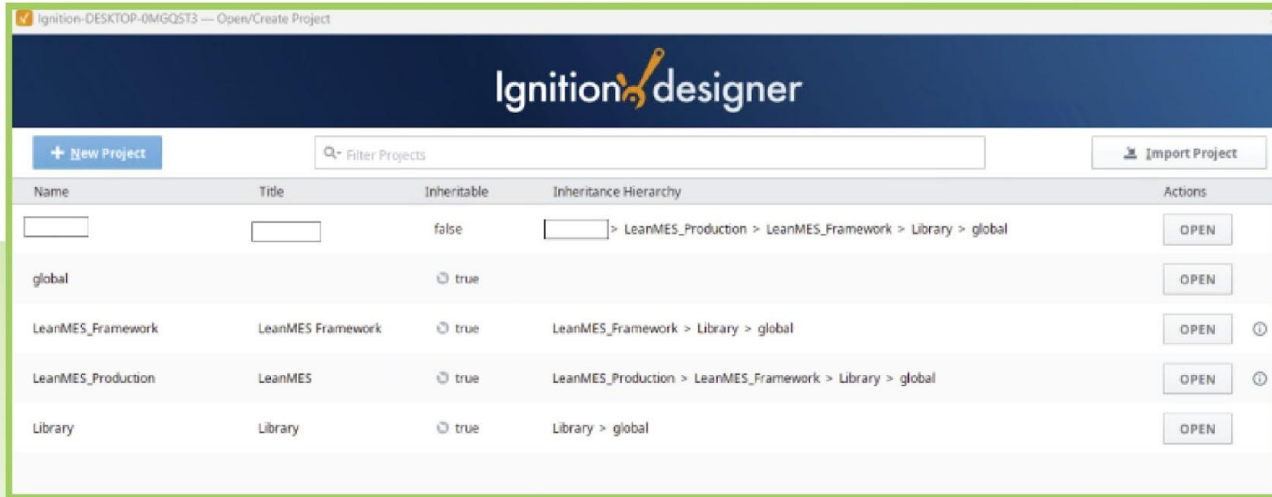
Why Ignition Was a Fit

High Level

- Batching framework integration and project inheritance
- IP locking for workstation-specific logic
- CSV import/export for recipes and results
- SQL integration for historization and scalability

Batching Framework

- Project inheritance allows for rapid development while maintaining the base projects integrity.

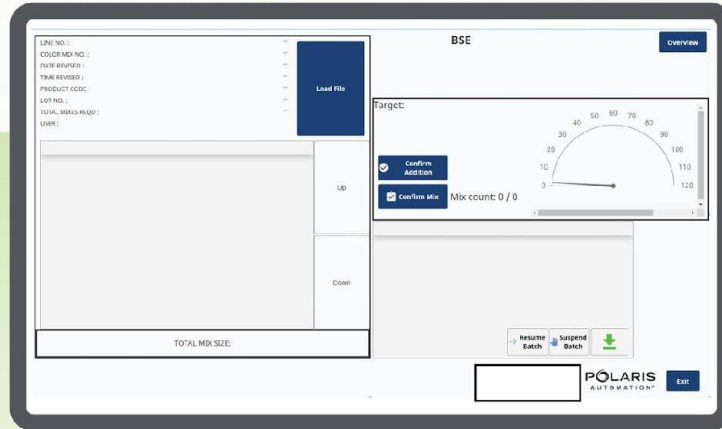
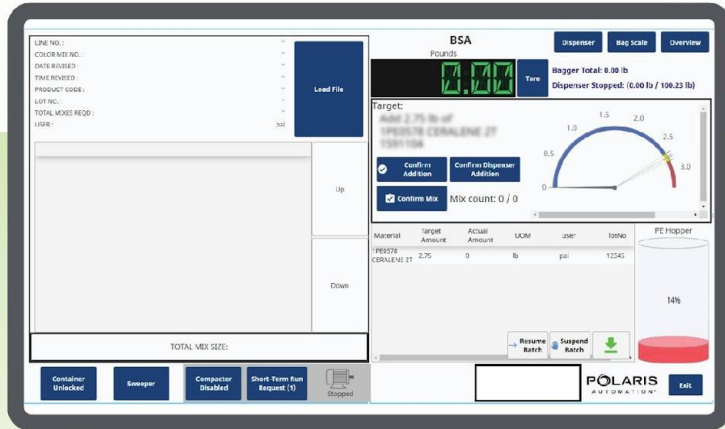


The screenshot shows the 'Open/Create Project' window in Ignition Designer. The window title is 'Ignition-DESKTOP-0MGGQST3 — Open/Create Project'. The header bar is dark blue with the 'Ignition designer' logo. Below the header, there is a '+ New Project' button, a search bar labeled 'Filter Projects', and an 'Import Project' button. The main area contains a table with the following columns: Name, Title, Inheritable, Inheritance Hierarchy, and Actions.

Name	Title	Inheritable	Inheritance Hierarchy	Actions
<input type="text"/>	<input type="text"/>	false	<input type="text"/> > LeanMES_Production > LeanMES_Framework > Library > global	<input type="button" value="OPEN"/>
global		<input checked="" type="radio"/> true		<input type="button" value="OPEN"/>
LeanMES_Framework	LeanMES Framework	<input checked="" type="radio"/> true	LeanMES_Framework > Library > global	<input type="button" value="OPEN"/> ⓘ
LeanMES_Production	LeanMES	<input checked="" type="radio"/> true	LeanMES_Production > LeanMES_Framework > Library > global	<input type="button" value="OPEN"/> ⓘ
Library	Library	<input checked="" type="radio"/> true	Library > global	<input type="button" value="OPEN"/>

Workstation Customization

- Autologin per station based on IP address
- Different equipment setups at each station, Improved station-specific workflows
- Eliminated having to maintain multiple versions of the similar screen



CSV Integration

Importing Recipes:

Drop CSV in shared folder, parsed into Ignition

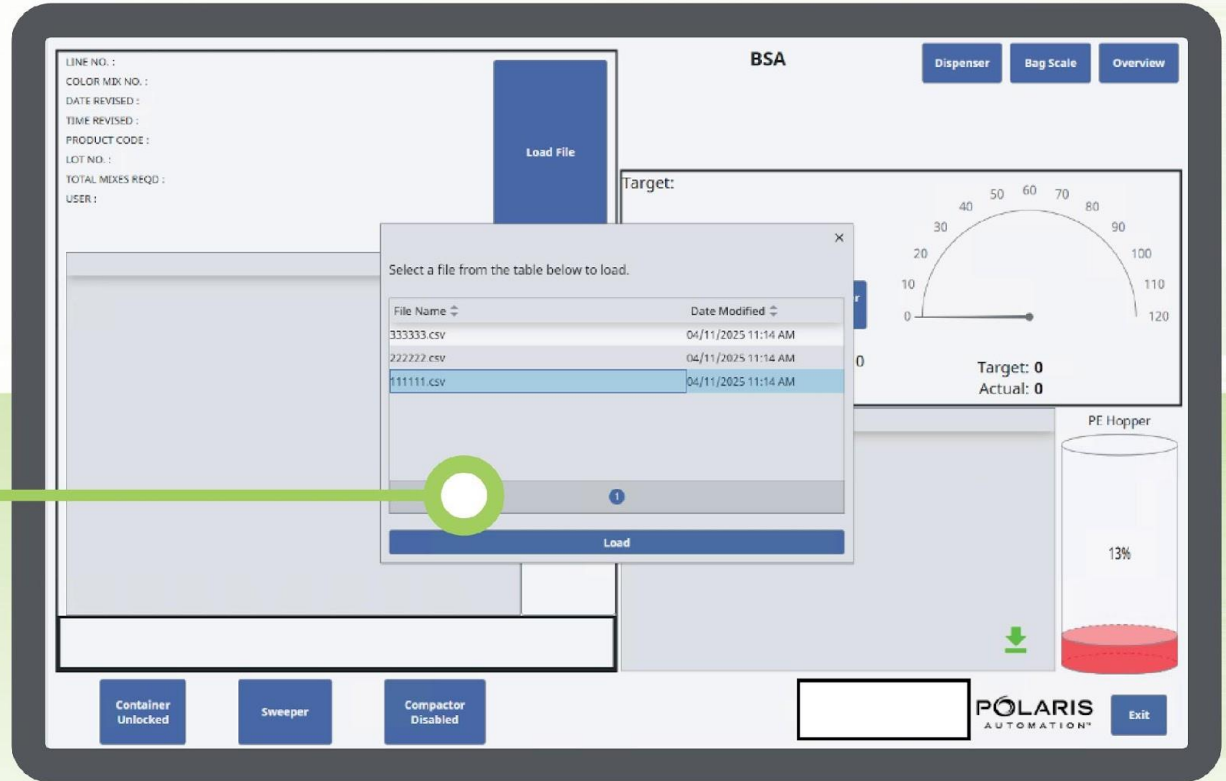
Exporting Results:

Compile batch ticket, saved to network for records and inventory

CSV Integration

Batch Procedure

Select the appropriate .csv file from the list presented and click "Load".



CSV Integration

```
#self.parent.parent.getChild("FlexContainer_0").getChild("Debug").props.text = row
time.sleep(1)
newRow = []
for column in row:
    if column.strip():
        cleanRow = column
        newRow.append(cleanRow.strip(":"))
if newRow:
    ds.append(newRow)
if len(newRow) == 2:
    dict[newRow[0]] = newRow[1]
if len(newRow) == 1:
    Notes.append(newRow[0])
if len(newRow) == 4 and Headers < 2:
    MixHeader = []
    for column in newRow:
        MixHeader.append(column)
    Headers += 1
elif len(newRow) == 4 and Headers >= 2:
    #self.parent.parent.getChild("FlexContainer_0").getChild("Debug").props.text = MixHeader JTH
    self.getChild("FlexContainer_0").getChild("Debug").props.text = MixHeader
    MixDataItem = {}
    #newRow.append("")
    MixData.append(newRow)
    for index,value in enumerate(newRow):
        valueName = MixHeader[index]
        if valueName.strip() == "DESCRIPTION":
            MixDataItem[valueName] = value.replace(".", "").replace("?", "").replace("i", "").replace("z", "").replace("X", "")
        else:
            if str(value) == 'N/A':
                MixDataItem[valueName] = str(0)
            else:
                MixDataItem[valueName] = str(value)

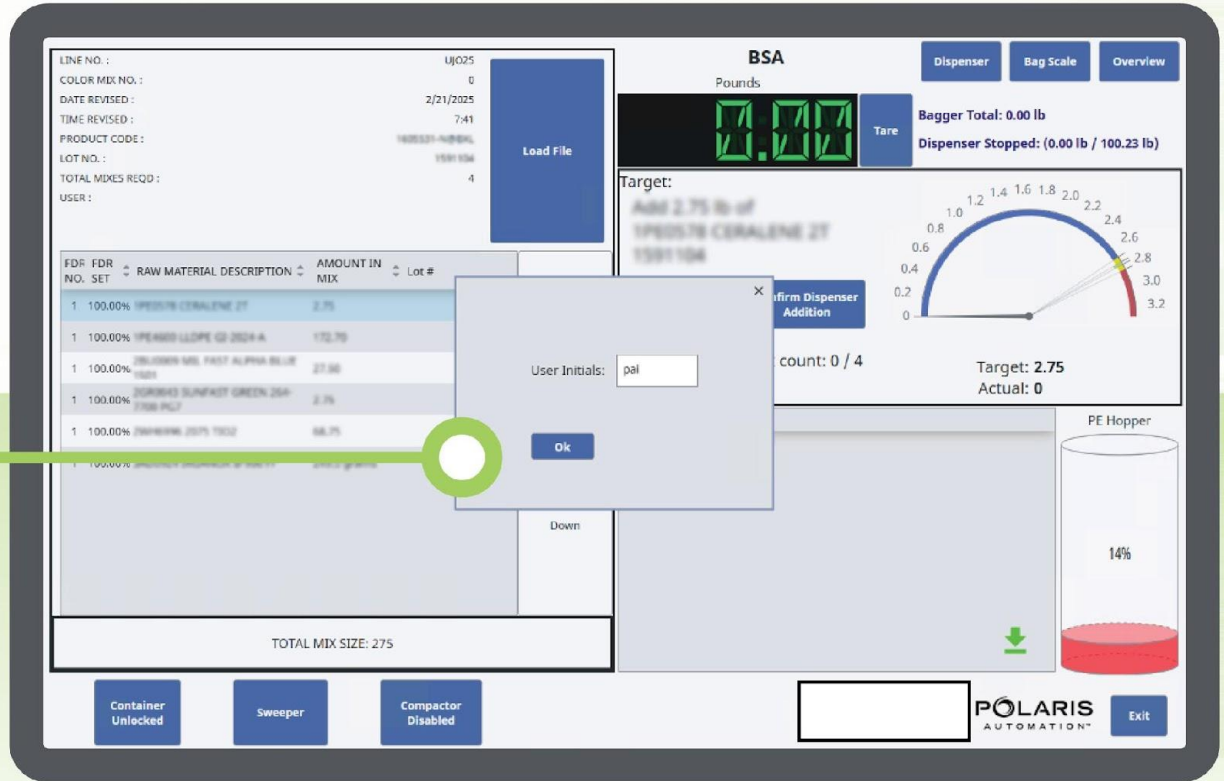
MixDataItem['lotNo'] = "" #jth
MixDataItem['confirmed'] = 0 #jth

mixDict[mixIndex] = MixDataItem
mixArray.append(MixDataItem)
mixIndex += 1
```

CSV Integration

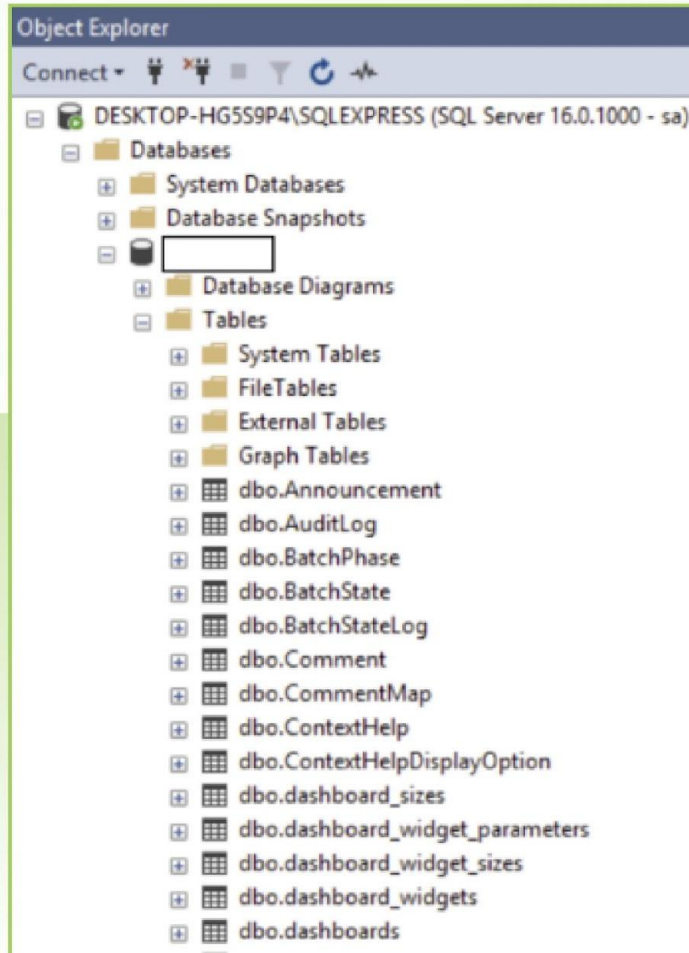
Batch Procedure

After clicking load you will be prompted to enter your initials. Using the on-screen keyboard, enter your initials and click "Ok" to start the batch.



SQL Integration

- Real-time data historization
- Supports advanced reporting and traceability
- Future-ready data model



Future Readiness

Next steps with client

- Full batching suite deployment
- Recipe & work order management
- ERP integration (API-based backflushing)
- Full batch historization and genealogy

Conclusion

- Solved a key step in the client's batching journey
- Ignition enabled flexibility, integration, and scalability
- Client is now ready for full Industry 4.0 rollout

Say Yes With Ignition

“Pretty much whatever we think of doing, we do it in Ignition.”

– David Lewis, Sierra Nevada Brewing Co.

“Ignition just removes all your limits”

– Cody Warren, Tamaki Control

“It’s a platform, and we can build anything we want to build on it.”

– Mark Daugherty, Overbridge Technology

“The opportunities for what this system can do are endless.”

– Hugh Roddy, Chobani



Ready to Try Ignition for Yourself?

Download the full version for free at:
inductiveautomation.com



inductiveuniversity.com

*Ignition User Manual also available at:
docs.inductiveautomation.com*

Ignition! Community Conference 2025

LEVEL UP

A stylized bar chart graphic consisting of three vertical bars of increasing height. The first bar is blue, the second is green, and the third is yellow. They are positioned between the words 'LEVEL' and 'UP' in the 'LEVEL UP' text.

A New Era For Ignition, Its Community, and Its Conference!

September 16–18, 2025 in Sacramento, CA

International Distributors

Brazil	FG Automação Industrial	www.fgltda.com.br
Central America & Colombia	NV Tecnologías S.A.	www.nvtecnologias.com
France	AXONE-iO	www.axone-io.com
Italy	EFA Automazione S.p.A	www.efa.it
Middle East/North Africa	Clarien Solutions	www.clarien.solutions
Norway & Sweden	Autic System AS	www.autic.no
Sub-Saharan Africa	Element8	https://element8.co.za
Switzerland	MPI Technologies	https://mpi.ch
Austria & Germany	Relatech S.p.A.	https://relatech.com

Contact International Distribution Manager Yegor Karnaukhov at: ykarnaukhov@inductiveautomation.com

Questions & Answers



Call us at: **800-266-7798** Email us at: accountservices@inductiveautomation.com



For Inductive Automation Australia, call: **1300 10 8088**

Thank You

Stay connected to us on social media
& subscribe to news feeds:

